

Converting Colors

XYZ(18.6808, 17.1217, 11.2731)

Have a look what the booklet for
XYZ(18.6808, 17.1217, 11.2731)
contains.

XYZ(18.7284, 17.1072, 11.3317)	3
<i>Conversions</i>	4
<i>Details</i>	6
<i>Harmonies</i>	12
<i>Previews</i>	24
<i>Color Blindness Simulation</i>	28
<i>CSS Examples</i>	31

Color

**XYZ(18.7284, 17.1072,
11.3317)**

Conversions

Conversions Part 1

Format	Color
Hex	926A57
RGB	146, 106, 87
RGB Percent	57%, 42%, 34%
CMY	0.4275, 0.5843, 0.6588
CMYK	0.00, 0.27, 0.40, 0.43
HSL	19°, 25%, 46%
HSV	19°, 40%, 57%
XYZ	18.7284, 17.1072, 11.3317
YIQ	115.7940, 29.9390, 2.5710

Conversions

Conversions Part 2

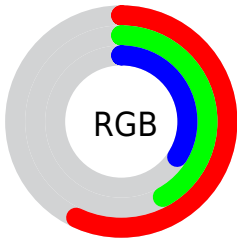
Format	Color
R_{YB}	146, 115, 87
Decimal	9595479
CIE _{Lab}	48.39, 13.39, 16.95
CIE _{LCh}	48, 21.601, 51.693
Yxy	17.1072, 0.3971, 0.3627
Android (android.graphics.Color)	4287785559 (0xFF926A57)
YUV	115.7940, -14.1954, 26.4907
Hunter-Lab	41.3609, 8.4442, 12.7088

Details

The XYZ color **18.7284, 17.1072, 11.3317** is a dark color, and the websafe version is hex **996666**. A complement of this color would be **16.7078, 19.2795, 30.0348**, and the grayscale version is **16.5734, 17.4365, 18.9884**.

A 20% lighter version of the original color is **40.6597, 38.3376, 28.9238**, and **6.5803, 5.6677, 2.8450** is the 20% darker color. If you saturate the color by 10%, you get **17.2295, 14.9693, 8.1809**, and if you desaturate by 10%, it is **20.4666, 19.5305, 15.1579**.

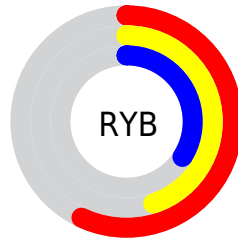
Distribution



 Red (57%)

 Green (42%)

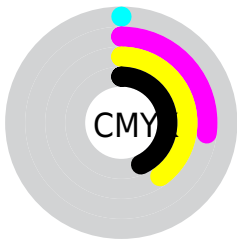
 Blue (34%)



 Red (57%)

 Yellow (45%)

 Blue (34%)

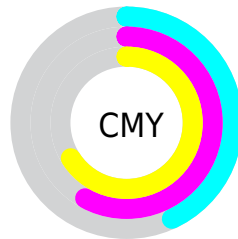



 Cyan (0%)


 Magenta (27%)

 Yellow (40%)

 Black (43%)



 Cyan (43%)

 Magenta (58%)

 Yellow (66%)

Brightness & Saturation Gradients

These gradients show how the XYZ color 18.7284, 17.1072, 11.3317 changes by changing the brightness by 10 percent. The first figure shows a shift by +10% for each color and the second figure -10%.

Similar to the brightness gradients but the following saturation gradients show a change of the XYZ color 18.7284, 17.1072, 11.3317 by changing the saturation by 10% instead.

■ 18.7284, 17.1072,
11.3317

■ 18.7284, 17.1072,
11.3317

237.9122,
235.7894, 210.7477

■ 11.5770, 10.3110,
6.1734

■ 40.7951, 38.5100,
28.9179

■ 6.5265, 5.6056,
2.8803

■ 56.4411, 53.8853,
42.1829

■ 3.2115, 2.6068,
1.0339

■ 75.6494, 72.8892,
58.9872

■ 1.2666, 0.9301,
0.0000

■ 98.7853, 95.9059,
79.7494

■ 0.1580, 0.0000,
0.0000

■ 126.2142,
123.3198, 104.8881

■ 0.0000, 0.0000,
0.0000

158.3014,

155.5155, 134.8216

195.4123,
192.8772, 169.9687

■ 18.7284, 17.1072,
11.3317

■ 18.7284, 17.1072,
11.3317

■ 17.2295, 14.9693,
8.1809

■ 20.4666, 19.5305,
15.1579

■ 15.9572, 13.1035,
5.6646

■ 22.4533, 22.2469,
19.6950

■ 14.8998, 11.4988,
3.7390

■ 24.6987, 25.2672,
24.9773

■ 14.0434, 10.1428,
2.3543

■ 27.2122, 28.6004,
31.0366

■ 13.3727, 9.0214,
1.4520

■ 30.0025, 32.2556,
37.9027

■ 12.8716, 8.1461,
0.8939

■ 33.0781, 36.2411,
45.6040

■ 36.4469, 40.5652,
54.1673

■ 40.1166, 45.2358,
63.6185

■ 44.0947, 50.2604,
73.9821

Harmonies

Analogous

The Analogous color harmony consists of three colors that are next to each other on the color wheel.



20.0485, 17.1072, 14.8902



18.7284, 17.1072, 11.3317



16.8145, 17.1072, 9.8070

Triad

The Triadic color harmony groups three colors that are evenly spaced from another and form a triangle on the color wheel.



18.7284, 17.1072, 11.3317



12.7853, 17.1072, 17.0998



17.7038, 17.1072, 30.6652

Complementary

The Complementary color scheme is a pair of colors which are on the opposite of each other on the color wheel.



18.7284, 17.1072, 11.3317



16.7078, 19.2795, 30.0348

Split Complementary

Split-complementary colors differ from the complementary color scheme. The scheme consists of three colors, the original color and two neighbors of the complement color.



15.7176, 17.1072, 31.5889



18.7284, 17.1072, 11.3317



12.9814, 17.1072, 22.9415

Square

The Square scheme is like the rectangle color scheme, but the four colors are evenly spaced on the color wheel.



18.7284, 17.1072, 11.3317



13.4592, 17.1072, 12.6676



14.0184, 17.1072, 28.5269



19.4244, 17.1072, 26.2116

Rectangle

The Rectangle color scheme consists of four colors that form a rectangle on the color wheel.



18.7284, 17.1072, 11.3317



15.5026, 17.1072, 9.8799



14.0184, 17.1072, 28.5269



17.0415, 17.1072, 31.4305

Sweetspot

The Sweet Spot groups the original color and five complimentary colors.



18.7288, 17.1080, 11.3320



42.8107, 43.5571, 42.2543



19.1138, 14.4681, 21.9723



9.4223, 9.5539, 9.1598



69.3244, 72.9347, 79.4259



10.7221, 11.2805, 12.2844

Same Dimension

The Same Dimension uses a secret algorithm to generate beautiful new colors.



18.7288, 17.1080, 11.3320



30.7503, 26.9205, 15.1615



22.2640, 24.1783, 12.5104



5.9442, 6.1023, 6.1050



11.3455, 7.2054, 0.7928



0.1633, 0.1371, 0.0179

Inverse Universe

The Inverse Universe completely reimagines the original color for something new.



16.7078, 19.2795, 30.0348



26.6920, 31.2423, 52.5971



13.4695, 12.8028, 28.9554



5.8082, 6.2504, 7.3701



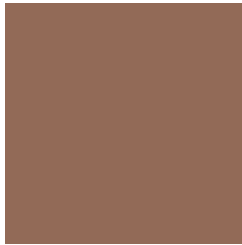
8.5107, 9.7162, 25.3579



0.1309, 0.1725, 0.3193

Previews

White Background



This preview shows how the XYZ color 18.7284, 17.1072, 11.3317 looks on a white background.

Color Contrast Check

Large Text (above 18pt) WCAG AA ✓ Pass

Any Text WCAG AA ✓ Pass

Large Text (above 18pt) WCAG AAA ✓ Pass

Any Text WCAG AAA × Fail

Black Background



This preview shows how the XYZ color 18.7284, 17.1072, 11.3317 looks on a black background.

Color Contrast Check

Large Text (above 18pt) WCAG AA ✓ Pass

Any Text WCAG AA × Fail

Large Text (above 18pt) WCAG AAA × Fail

Any Text WCAG AAA × Fail

If you want to check with other color combinations, try the [Color Contrast Checker](#).

XYZ 18.7284, 17.1072, 11.3317

Background



This preview shows how black text looks on a background with the XYZ color 18.7284, 17.1072, 11.3317.



This preview shows how white text looks on a background with the XYZ color 18.7284, 17.1072,

Color Blindness Simulation

Color vision deficiency is a very complex topic, and I could not describe the different causes any better than Wikipedia does, so if you want to learn more, you should check out their [article about color blindness](#).

Dichromacy



Original Color

18.7284, 17.1072, 11.3317

Protanopia

16.1874, 17.2278, 12.3696

Deuteranopia

17.4090, 17.0580, 11.1791



Tritanopia

19.9322, 17.1441, 17.2975

Trichromacy



Original Color

18.7284, 17.1072, 11.3317

Protanomaly

16.9997, 17.1518, 12.0875

Deuteranomaly

17.9636, 17.1846, 11.1743

Tritanomaly

19.3812, 17.0630, 14.8424

Monochromacy



Original Color

18.7284, 17.1072, 11.3317

Achromatopsia

16.6002, 17.4647, 19.0191

Achromatomaly

17.0964, 17.1203, 15.7681

CSS Examples

Text

The CSS property to change the color of the text to XYZ 18.7284, 17.1072, 11.3317 is called "color". The color property can be set on classes, ids or directly on the HTML element.

This example shows how text in the color `rgb(146, 106, 87)` looks like.

```
.text, #text, p{  
    color:rgb(146, 106, 87)  
}
```

If you want to add a text shadow in that color use the text-shadow property, you can generate a text shadow directly with our [CSS Text Shadow Generator](#).

Here you see how black text with a 4 pixel rgb(146, 106, 87) colored shadow looks like.

```
.shadow{ text-shadow: 4px 4px 2px rgb(146, 106, 87) }
```

Border

The CSS property to change the border of an element to XYZ 18.7284, 17.1072, 11.3317 is called "border". The border property can be set on classes, ids or directly on the HTML element.

This example shows the color as border, it can be applied via the CSS property "border" or "border-color".

```
.border, #border, table{ border:4px solid rgb(146, 106, 87) }
```


If only the border color should be changed use the property border-color.

```
.border{ border-color:rgb(146, 106, 87) }
```

If you want to add a box shadow in that color use:

Here you see how a box with a 4 pixel rgb(146, 106, 87) colored shadow looks like.

```
.boxshadow{ -moz-box-shadow:4px 4px 4px  
4px rgb(146, 106, 87); -webkit-box-  
shadow:4px 4px 4px 4px rgb(146, 106, 87);  
box-shadow:4px 4px 4px 4px rgb(146, 106,  
87) }
```

Background

The CSS property to change the background color of an element to XYZ 18.7284, 17.1072, 11.3317 is called "background". The background property can be set on classes, ids or directly on the HTML element.

```
.background, #background, body{  
background: rgb(146, 106, 87) }
```

If only the background color should be changed can be used:

```
.background{ background-color: rgb(146,  
106, 87) }
```

This example shows the color as background, it is applied via the CSS property "background".

To optimize and compress your CSS code, you can use our [online CSS compressor and optimizer](#) based on csstidy. If you want to create a linear or radial gradient as background or border, check our [CSS Gradient Generator](#).

Hey! You found this booklet interesting? Support Converting Colors with the new Membership Option!

The pro membership hides all ads, plus gives you double the colors in the color bucket, and more awesome pro features!

[Learn more, Memberships starting at \\$2.50/m!](#)

**Follow me
on Twitter!**

@ConvertingColor