

Converting Colors

XYZ(18.6987, 17.7308, 11.9433)

Have a look what the booklet for
XYZ(18.6987, 17.7308, 11.9433)
contains.

XYZ(18.7068, 17.7128, 11.8841)	3
<i>Conversions</i>	4
<i>Details</i>	6
<i>Harmonies</i>	12
<i>Previews</i>	24
<i>Color Blindness Simulation</i>	28
<i>CSS Examples</i>	31

Color

**XYZ(18.7068, 17.7128,
11.8841)**

Conversions

Conversions Part 1

Format	Color
Hex	8F6E59
RGB	143, 110, 89
RGB Percent	56%, 43%, 35%
CMY	0.4392, 0.5686, 0.6510
CMYK	0.00, 0.23, 0.38, 0.44
HSL	23°, 23%, 45%
HSV	23°, 38%, 56%
XYZ	18.7068, 17.7128, 11.8841
YIQ	117.4730, 26.4090, 0.4650

Conversions

Conversions Part 2

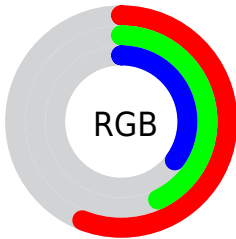
Format	Color
R_{YB}	143, 123, 89
Decimal	9399897
CIE _{Lab}	49.15, 10.04, 16.74
CIE _{LCh}	49, 19.521, 59.046
Yxy	17.7128, 0.3873, 0.3667
Android (android.graphics.Color)	4287589977 (0xFF8F6E59)
YUV	117.4730, -14.0372, 22.3872
Hunter-Lab	42.0866, 5.6888, 12.7187

Details

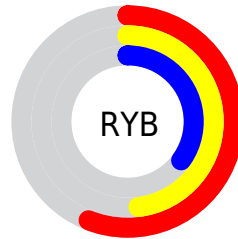
The XYZ color **18.7068, 17.7128, 11.8841** is a dark color, and the websafe version is hex **996666**. A complement of this color would be **16.0370, 18.0253, 28.6206**, and the grayscale version is **17.0924, 17.9825, 19.5829**.

A 20% lighter version of the original color is **40.8692, 39.7105, 29.9370**, and **6.4731, 5.8438, 3.0723** is the 20% darker color. If you saturate the color by 10%, you get **17.2670, 15.7027, 8.7239**, and if you desaturate by 10%, it is **20.3572, 19.9573, 15.6905**.

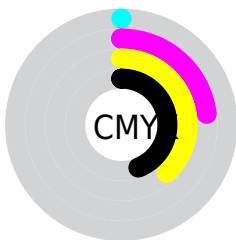
Distribution



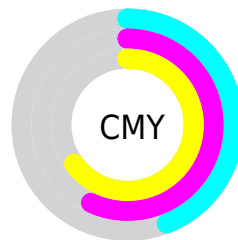
- Red (56%)
- Green (43%)
- Blue (35%)



- Red (56%)
- Yellow (48%)
- Blue (35%)



- Cyan (0%)
- Magenta (23%)
- Yellow (38%)
- Black (44%)



- Cyan (44%)
- Magenta (57%)
- Yellow (65%)

Brightness & Saturation Gradients

These gradients show how the XYZ color 18.7068, 17.7128, 11.8841 changes by changing the brightness by 10 percent. The first figure shows a shift by +10% for each color and the second figure -10%.

Similar to the brightness gradients but the following saturation gradients show a change of the XYZ color 18.7068, 17.7128, 11.8841 by changing the saturation by 10% instead.

■ 18.7068, 17.7128,
11.8841

■ 18.7068, 17.7128,
11.8841

237.7946,
239.2472, 214.5871

■ 11.5614, 10.7440,
6.5432

■ 40.7588, 39.5473,
29.9451

■ 6.5158, 5.8950,
3.1040

■ 56.3960, 55.1818,
43.5023

■ 3.2048, 2.7813,
1.1480

■ 75.5946, 74.4737,
60.6353

■ 1.2630, 1.0187,
0.0000

■ 98.7198, 97.8073,
81.7627

■ 0.1552, 0.0000,
0.0000

■ 126.1371,
125.5671, 107.3031

■ 0.0000, 0.0000,
0.0000

158.2118,

158.1374, 137.6749

195.3091,
195.9027, 173.2967

■ 18.7068, 17.7128,
11.8841

■ 18.7068, 17.7128,
11.8841

■ 17.2670, 15.7027,
8.7239

■ 20.3572, 19.9573,
15.6905

■ 16.0270, 13.9162,
6.1721

■ 22.2255, 22.4412,
20.1756

■ 14.9769, 12.3458,
4.1888

■ 24.3206, 25.1726,
25.3712

■ 14.1053, 10.9821,
2.7287

■ 26.6503, 28.1585,
31.3066

■ 13.3995, 9.8149,
1.7393

■ 29.2219, 31.4055,
38.0096

■ 12.8370, 8.8302,
1.1197

■ 32.0425, 34.9200,
45.5063

■ 12.7235, 8.6313,
0.9954

■ 35.1189, 38.7081,
53.8219

■ 38.4576, 42.7758,
62.9803

■ 42.0649, 47.1289,
73.0043

Harmonies

Analogous

The Analogous color harmony consists of three colors that are next to each other on the color wheel.



20.0954, 17.7128, 14.8044



18.7068, 17.7128, 11.8841



16.8940, 17.7128, 10.8779

Triad

The Triadic color harmony groups three colors that are evenly spaced from another and form a triangle on the color wheel.



18.7068, 17.7128, 11.8841



13.5632, 17.7128, 19.1193



18.5984, 17.7128, 29.4806

Complementary

The Complementary color scheme is a pair of colors which are on the opposite of each other on the color wheel.



18.7068, 17.7128, 11.8841



16.0370, 18.0253, 28.6206

Split Complementary

Split-complementary colors differ from the complementary color scheme. The scheme consists of three colors, the original color and two neighbors of the complement color.



16.7771, 17.7128, 31.1889



18.7068, 17.7128, 11.8841



13.9487, 17.7128, 24.5919

Square

The Square scheme is like the rectangle color scheme, but the four colors are evenly spaced on the color wheel.



18.7068, 17.7128, 11.8841



14.0003, 17.7128, 14.5626



15.0933, 17.7128, 29.2590



20.0297, 17.7128, 24.9345

Rectangle

The Rectangle color scheme consists of four colors that form a rectangle on the color wheel.



18.7068, 17.7128, 11.8841



15.7155, 17.7128, 11.2570



15.0933, 17.7128, 29.2590



18.0075, 17.7128, 30.4385

Sweetspot

The Sweet Spot groups the original color and five complimentary colors.



18.7073, 17.7136, 11.8845



42.2054, 43.3315, 42.0589



18.4316, 14.3971, 20.3175



9.5748, 9.8017, 9.3868



69.3244, 72.9347, 79.4259



10.7221, 11.2805, 12.2844

Same Dimension

The Same Dimension uses a secret algorithm to generate beautiful new colors.



18.7073, 17.7136, 11.8845



31.3624, 28.7428, 16.5650



22.0340, 24.3671, 12.9934



5.5702, 5.7466, 5.7050



11.2693, 7.6703, 0.8866



0.1281, 0.1140, 0.0152

Inverse Universe

The Inverse Universe completely reimagines the original color for something new.



16.0370, 18.0253, 28.6206



25.8863, 29.3677, 50.8422



13.1972, 12.3457, 27.6740



5.3865, 5.7688, 6.8584



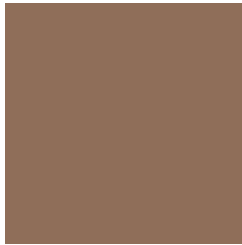
7.4452, 7.8764, 24.1050



0.0926, 0.1182, 0.2376

Previews

White Background



This preview shows how the XYZ color 18.7068, 17.7128, 11.8841 looks on a white background.

Color Contrast Check

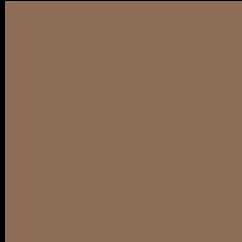
Large Text (above 18pt) WCAG AA ✓ Pass

Any Text WCAG AA ✓ Pass

Large Text (above 18pt) WCAG AAA ✓ Pass

Any Text WCAG AAA × Fail

Black Background



This preview shows how the XYZ color 18.7068, 17.7128, 11.8841 looks on a black background.

Color Contrast Check

Large Text (above 18pt) WCAG AA ✓ Pass

Any Text WCAG AA ✓ Pass

Large Text (above 18pt) WCAG AAA ✓ Pass

Any Text WCAG AAA × Fail

If you want to check with other color combinations, try the [Color Contrast Checker](#).

XYZ 18.7068, 17.7128, 11.8841

Background



This preview shows how black text looks on a background with the XYZ color 18.7068, 17.7128, 11.8841.



This preview shows how white text looks on a background with the XYZ color 18.7068, 17.7128,

Color Blindness Simulation

Color vision deficiency is a very complex topic, and I could not describe the different causes any better than Wikipedia does, so if you want to learn more, you should check out their [article about color blindness](#).

Dichromacy



Original Color

18.7068, 17.7128, 11.8841

Protanopia

16.7505, 17.8553, 12.6888

Deuteranopia

18.0786, 17.7129, 11.9173



Tritanopia

20.1026, 17.6569, 18.5682

Trichromacy



Original Color

18.7068, 17.7128, 11.8841

Protanomaly

17.4214, 17.6955, 12.3949

Deuteranomaly

18.3028, 17.6656, 11.8963

Tritanomaly

19.5363, 17.5757, 15.9985

Monochromacy



Original Color

18.7068, 17.7128, 11.8841

Achromatopsia

16.9083, 17.7888, 19.3720

Achromatomaly

17.2753, 17.5318, 16.3834

CSS Examples

Text

The CSS property to change the color of the text to XYZ 18.7068, 17.7128, 11.8841 is called "color". The color property can be set on classes, ids or directly on the HTML element.

This example shows how text in the color `rgb(143, 110, 89)` looks like.

```
.text, #text, p{  
    color:rgb(143, 110, 89)  
}
```

If you want to add a text shadow in that color use the text-shadow property, you can generate a text shadow directly with our [CSS Text Shadow Generator](#).

Here you see how black text with a 4 pixel rgb(143, 110, 89) colored shadow looks like.

```
.shadow{ text-shadow: 4px 4px 2px rgb(143, 110, 89) }
```

Border

The CSS property to change the border of an element to XYZ 18.7068, 17.7128, 11.8841 is called "border". The border property can be set on classes, ids or directly on the HTML element.

This example shows the color as border, it can be applied via the CSS property "border" or "border-color".

```
.border, #border, table{ border:4px solid rgb(143, 110, 89) }
```


If only the border color should be changed use the property `border-color`.

```
.border{ border-color:rgb(143, 110, 89) }
```

If you want to add a box shadow in that color use:

Here you see how a box with a 4 pixel `rgb(143, 110, 89)` colored shadow looks like.

```
.boxshadow{ -moz-box-shadow:4px 4px 4px  
4px rgb(143, 110, 89); -webkit-box-  
shadow:4px 4px 4px 4px rgb(143, 110, 89);  
box-shadow:4px 4px 4px 4px rgb(143, 110,  
89) }
```

Background

The CSS property to change the background color of an element to XYZ 18.7068, 17.7128, 11.8841 is called "background". The background property can be set on classes, ids or directly on the HTML element.

```
.background, #background, body{  
background: rgb(143, 110, 89) }
```

If only the background color should be changed can be used:

```
.background{ background-color: rgb(143,  
110, 89) }
```

This example shows the color as background, it is applied via the CSS property "background".

To optimize and compress your CSS code, you can use our [online CSS compressor and optimizer](#) based on csstidy. If you want to create a linear or radial gradient as background or border, check our [CSS Gradient Generator](#).

Hey! You found this booklet interesting? Support Converting Colors with the new Membership Option!

The pro membership hides all ads, plus gives you double the colors in the color bucket, and more awesome pro features!

[Learn more, Memberships starting at \\$2.50/m!](#)

**Follow me
on Twitter!**

@ConvertingColor