

Converting Colors

XYZ(19.0512, 17.6679, 19.1779)

Have a look what the booklet for
XYZ(19.0512, 17.6679, 19.1779)
contains.

XYZ(19.1033, 17.7546, 19.2497)	3
<i>Conversions</i>	4
<i>Details</i>	6
<i>Harmonies</i>	12
<i>Previews</i>	24
<i>Color Blindness Simulation</i>	28
<i>CSS Examples</i>	31

Color

**XYZ(19.1033, 17.7546,
19.2497)**

Conversions

Conversions Part 1

Format	Color
Hex	896E75
RGB	137, 110, 117
RGB Percent	54%, 43%, 46%
CMY	0.4627, 0.5686, 0.5412
CMYK	0.00, 0.20, 0.15, 0.46
HSL	344°, 11%, 48%
HSV	344°, 20%, 54%
XYZ	19.1033, 17.7546, 19.2497
YIQ	118.8710, 13.8450, 7.9010

Conversions

Conversions Part 2

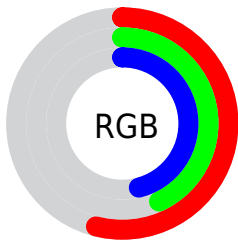
Format	Color
R_{YB}	137, 110, 117
Decimal	9006709
CIE _{Lab}	49.20, 11.86, 0.16
CIE _{LCh}	49, 11.862, 0.769
Yxy	17.7546, 0.3405, 0.3164
Android (android.graphics.Color)	4287196789 (0xFF896E75)
YUV	118.8710, -0.9224, 15.8991
Hunter-Lab	42.1362, 7.1882, 2.4090

Details

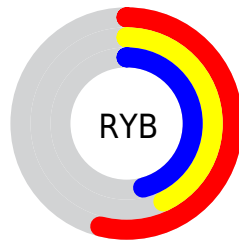
The XYZ color **19.1033, 17.7546, 19.2497** is a dark color, and the websafe version is hex **996666**. A complement of this color would be **19.4060, 22.8184, 24.5018**, and the grayscale version is **17.4940, 18.4050, 20.0431**.

A 20% lighter version of the original color is **41.5676, 39.7816, 43.0239**, and **6.7273, 5.9012, 6.4147** is the 20% darker color. If you saturate the color by 10%, you get **17.1732, 14.7980, 15.8201**, and if you desaturate by 10%, it is **21.3277, 21.1957, 23.0970**.

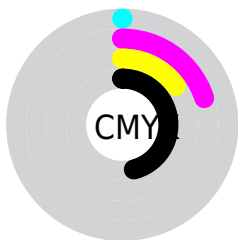
Distribution



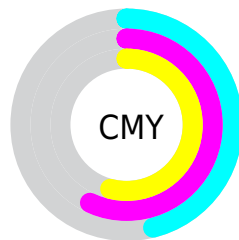
- Red (54%)
- Green (43%)
- Blue (46%)



- Red (54%)
- Yellow (43%)
- Blue (46%)



- Cyan (0%)
- Magenta (20%)
- Yellow (15%)
- Black (46%)



- Cyan (46%)
- Magenta (57%)
- Yellow (54%)

Brightness & Saturation Gradients

These gradients show how the XYZ color 19.1033, 17.7546, 19.2497 changes by changing the brightness by 10 percent. The first figure shows a shift by +10% for each color and the second figure -10%.

Similar to the brightness gradients but the following saturation gradients show a change of the XYZ color 19.1033, 17.7546, 19.2497 by changing the saturation by 10% instead.

■ 19.1033, 17.7546,
19.2497

■ 19.1033, 17.7546,
19.2497

239.9456,
239.4842, 260.2923

■ 11.8494, 10.7739,
11.6722

■ 41.4241, 39.6187,
42.9979

■ 6.7127, 5.9150,
6.4011

■ 57.2217, 55.2710,
60.0057

■ 3.3278, 2.7935,
3.0178

■ 76.5979, 74.5826,
80.9940

■ 1.3294, 1.0249,
1.1037

■ 99.9181, 97.9379,
106.3814

■ 0.2051, 0.0000,
0.0000

127.5476,
125.7213, 136.5864

■ 0.0000, 0.0000,
0.0000

159.8518,

158.3172, 172.0275

197.1960,
196.1101, 213.1233

■ 19.1033, 17.7546,
19.2497

■ 19.1033, 17.7546,
19.2497

■ 17.1732, 14.7980,
15.8201

■ 21.3277, 21.1957,
23.0970

■ 15.5234, 12.3019,
12.7929

■ 23.8566, 25.1394,
27.3746

■ 14.1408, 10.2436,
10.1533

■ 26.7016, 29.6057,
32.0957

■ 13.0110, 8.5976,
7.8850

■ 29.8733, 34.6127,
37.2729

■ 12.1179, 7.3357,
5.9709

■ 33.3817, 40.1777,
42.9179

■ 11.4435, 6.4262,
4.3921

■ 37.2364, 46.3174,
49.0424

■ 10.9673, 5.8322,
3.1279

■ 41.4467, 53.0475,
55.6573

■ 10.6364, 5.4533,
2.1456

■ 46.0214, 60.3832,
62.7733

■ 10.6275, 5.4428,
2.1203

■ 50.9691, 68.3394,
70.4009

Harmonies

Analogous

The Analogous color harmony consists of three colors that are next to each other on the color wheel.



18.8095, 17.7546, 22.4768



19.1033, 17.7546, 19.2497



18.7786, 17.7546, 16.3670

Triad

The Triadic color harmony groups three colors that are evenly spaced from another and form a triangle on the color wheel.



19.1033, 17.7546, 19.2497



15.8055, 17.7546, 14.5358



15.8531, 17.7546, 25.1790

Complementary

The Complementary color scheme is a pair of colors which are on the opposite of each other on the color wheel.



19.1033, 17.7546, 19.2497



19.4060, 22.8184, 24.5018

Split Complementary

Split-complementary colors differ from the complementary color scheme. The scheme consists of three colors, the original color and two neighbors of the complement color.



15.1050, 17.7546, 22.6345



19.1033, 17.7546, 19.2497



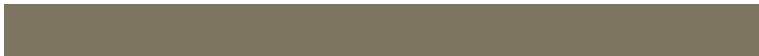
15.0783, 17.7546, 16.4946

Square

The Square scheme is like the rectangle color scheme, but the four colors are evenly spaced on the color wheel.



19.1033, 17.7546, 19.2497



16.8465, 17.7546, 13.8355



14.8275, 17.7546, 19.4140



16.9039, 17.7546, 26.1193

Rectangle

The Rectangle color scheme consists of four colors that form a rectangle on the color wheel.



19.1033, 17.7546, 19.2497



18.2630, 17.7546, 14.9683



14.8275, 17.7546, 19.4140



15.5595, 17.7546, 24.4701

Sweetspot

The Sweet Spot groups the original color and five complimentary colors.



19.1038, 17.7554, 19.2501



39.7483, 40.3758, 44.0098



19.2671, 17.6889, 26.0658



8.8620, 8.9730, 9.7806



65.7814, 69.2071, 75.3665



9.5508, 10.0482, 10.9424

Same Dimension

The Same Dimension uses a secret algorithm to generate beautiful new colors.



19.1038, 17.7554, 19.2501



32.4793, 29.1361, 31.4185



19.4116, 19.0050, 17.3981



5.0826, 5.0685, 5.5236



9.9039, 5.0717, 1.9982



0.0711, 0.0358, 0.0411

Inverse Universe

The Inverse Universe completely reimagines the original color for something new.



19.1038, 17.7554, 19.2501



32.4793, 29.1361, 31.4185



19.0224, 21.2738, 26.7706



5.0826, 5.0685, 5.5236



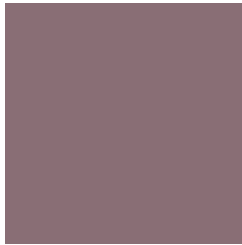
9.9039, 5.0717, 1.9982



0.0711, 0.0358, 0.0411

Previews

White Background



This preview shows how the XYZ color 19.1033, 17.7546, 19.2497 looks on a white background.

Color Contrast Check

Large Text (above 18pt) WCAG AA ✓ Pass

Any Text WCAG AA ✓ Pass

Large Text (above 18pt) WCAG AAA ✓ Pass

Any Text WCAG AAA × Fail

Black Background



This preview shows how the XYZ color 19.1033, 17.7546, 19.2497 looks on a black background.

Color Contrast Check

Large Text (above 18pt) WCAG AA ✓ Pass

Any Text WCAG AA ✓ Pass

Large Text (above 18pt) WCAG AAA ✓ Pass

Any Text WCAG AAA × Fail

If you want to check with other color combinations, try the [Color Contrast Checker](#).

XYZ 19.1033, 17.7546, 19.2497

Background



This preview shows how black text looks on a background with the XYZ color 19.1033, 17.7546, 19.2497.



This preview shows how white text looks on a background with the XYZ color 19.1033, 17.7546,

Color Blindness Simulation

Color vision deficiency is a very complex topic, and I could not describe the different causes any better than Wikipedia does, so if you want to learn more, you should check out their [article about color blindness](#).

Dichromacy



Original Color

19.1033, 17.7546, 19.2497

Protanopia

17.1678, 17.7228, 20.6052

Deuteranopia

18.1108, 17.7383, 18.9923



Tritanopia

19.1625, 17.7782, 19.5611

Trichromacy



Original Color

19.1033, 17.7546, 19.2497

Protanomaly

17.8649, 17.7507, 20.2539

Deuteranomaly

18.4623, 17.7548, 18.9770

Tritanomaly

19.1625, 17.7782, 19.5611

Monochromacy



Original Color

19.1033, 17.7546, 19.2497

Achromatopsia

17.5343, 18.4475, 20.0893

Achromatomaly

18.1196, 18.2344, 19.7041

CSS Examples

Text

The CSS property to change the color of the text to XYZ 19.1033, 17.7546, 19.2497 is called "color". The color property can be set on classes, ids or directly on the HTML element.

This example shows how text in the color `rgb(137, 110, 117)` looks like.

```
.text, #text, p{  
    color:rgb(137, 110, 117)  
}
```

If you want to add a text shadow in that color use the text-shadow property, you can generate a text shadow directly with our [CSS Text Shadow Generator](#).

Here you see how black text with a 4 pixel rgb(137, 110, 117) colored shadow looks like.

```
.shadow{ text-shadow: 4px 4px 2px rgb(137, 110, 117) }
```

Border

The CSS property to change the border of an element to XYZ 19.1033, 17.7546, 19.2497 is called "border". The border property can be set on classes, ids or directly on the HTML element.

This example shows the color as border, it can be applied via the CSS property "border" or "border-color".

```
.border, #border, table{ border:4px solid rgb(137, 110, 117) }
```


If only the border color should be changed use the property `border-color`.

```
.border{ border-color:rgb(137, 110, 117) }
```

If you want to add a box shadow in that color use:

Here you see how a box with a 4 pixel `rgb(137, 110, 117)` colored shadow looks like.

```
.boxshadow{ -moz-box-shadow:4px 4px 4px  
4px rgb(137, 110, 117); -webkit-box-  
shadow:4px 4px 4px 4px rgb(137, 110, 117);  
box-shadow:4px 4px 4px 4px rgb(137, 110,  
117) }
```

Background

The CSS property to change the background color of an element to XYZ 19.1033, 17.7546, 19.2497 is called "background". The background property can be set on classes, ids or directly on the HTML element.

```
.background, #background, body{  
background: rgb(137, 110, 117) }
```

If only the background color should be changed can be used:

```
.background{ background-color: rgb(137,  
110, 117) }
```

This example shows the color as background, it is applied via the CSS property "background".

To optimize and compress your CSS code, you can use our [online CSS compressor and optimizer](#) based on csstidy. If you want to create a linear or radial gradient as background or border, check our [CSS Gradient Generator](#).

Hey! You found this booklet interesting? Support Converting Colors with the new Membership Option!

The pro membership hides all ads, plus gives you double the colors in the color bucket, and more awesome pro features!

[Learn more, Memberships starting at \\$2.50/m!](#)

**Follow me
on Twitter!**

@ConvertingColor