

Converting Colors

XYZ(19.2599, 18.3128, 12.7831)

Have a look what the booklet for
XYZ(19.2599, 18.3128, 12.7831)
contains.

XYZ(19.2716, 18.3079, 12.8740)	3
<i>Conversions</i>	4
<i>Details</i>	6
<i>Harmonies</i>	12
<i>Previews</i>	24
<i>Color Blindness Simulation</i>	28
<i>CSS Examples</i>	31

Color

**XYZ(19.2716, 18.3079,
12.8740)**

Conversions

Conversions Part 1

Format	Color
Hex	90705D
RGB	144, 112, 93
RGB Percent	56%, 44%, 36%
CMY	0.4353, 0.5608, 0.6353
CMYK	0.00, 0.22, 0.35, 0.44
HSL	22°, 22%, 46%
HSV	22°, 35%, 56%
XYZ	19.2716, 18.3079, 12.8740
YIQ	119.4020, 25.1710, 0.8750

Conversions

Conversions Part 2

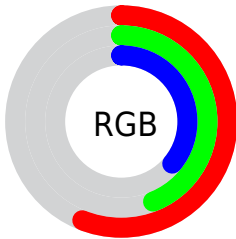
Format	Color
R_YB	144, 123, 93
Decimal	9465949
CIE Lab	49.87, 9.83, 15.40
CIE LCh	50, 18.270, 57.456
Yxy	18.3079, 0.3820, 0.3629
Android (android.graphics.Color)	4287656029 (0xFF90705D)
YUV	119.4020, -13.0162, 21.5724
Hunter-Lab	42.7877, 5.5179, 12.1122

Details

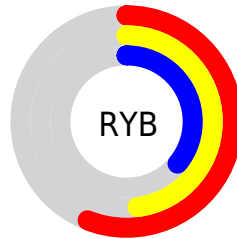
The XYZ color **19.2716, 18.3079, 12.8740** is a dark color, and the websafe version is hex **996666**. A complement of this color would be **16.8818, 19.0076, 29.1649**, and the grayscale version is **17.6968, 18.6185, 20.2755**.

A 20% lighter version of the original color is **41.7866, 40.6762, 31.6355**, and **6.7601, 6.1473, 3.5196** is the 20% darker color. If you saturate the color by 10%, you get **17.7456, 16.1823, 9.5094**, and if you desaturate by 10%, it is **21.0187, 20.6833, 16.9053**.

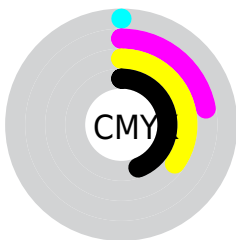
Distribution



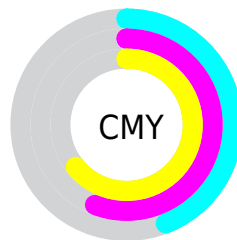
- Red (56%)
- Green (44%)
- Blue (36%)



- Red (56%)
- Yellow (48%)
- Blue (36%)



- Cyan (0%)
- Magenta (22%)
- Yellow (35%)
- Black (44%)



- Cyan (44%)
- Magenta (56%)
- Yellow (64%)

Brightness & Saturation Gradients

These gradients show how the XYZ color 19.2716, 18.3079, 12.8740 changes by changing the brightness by 10 percent. The first figure shows a shift by +10% for each color and the second figure -10%.

Similar to the brightness gradients but the following saturation gradients show a change of the XYZ color 19.2716, 18.3079, 12.8740 by changing the saturation by 10% instead.

■ 19.2716, 18.3079,
12.8740

■ 19.2716, 18.3079,
12.8740

240.8535,
242.6008, 221.2880

■ 11.9719, 11.1713,
7.2121

■ 41.7059, 40.5613,
31.7651

■ 6.7966, 6.1822,
3.5147

■ 57.5711, 56.4468,
45.8314

■ 3.3804, 2.9562,
1.3631

■ 77.0222, 76.0175,
63.5363

■ 1.3580, 1.1089,
0.1126

■ 100.4246, 99.6576,
85.2982

■ 0.2260, 0.0000,
0.0000

128.1435,
127.7516, 111.5359

■ 0.0000, 0.0000,
0.0000

160.5444,

160.6839, 142.6677

197.9926,
198.8388, 179.1122

■ 19.2716, 18.3079,
12.8740

■ 19.2716, 18.3079,
12.8740

■ 17.7456, 16.1823,
9.5094

■ 21.0187, 20.6833,
16.9053

■ 16.4297, 14.2955,
6.7739

■ 22.9945, 23.3142,
21.6360

■ 15.3137, 12.6391,
4.6276

■ 25.2081, 26.2090,
27.0978

■ 14.3862, 11.2034,
3.0257

■ 27.6675, 29.3751,
33.3204

■ 13.6341, 9.9776,
1.9168

■ 30.3802, 32.8197,
40.3316

■ 13.0406, 8.9494,
1.2296

■ 33.3537, 36.5496,
48.1578

■ 12.8048, 8.5356,
0.9726

■ 36.5949, 40.5712,
56.8244

■ 40.1105, 44.8909,
66.3554

■ 43.9070, 49.5150,
76.7739

Harmonies

Analogous

The Analogous color harmony consists of three colors that are next to each other on the color wheel.



20.5556, 18.3079, 15.8191



19.2716, 18.3079, 12.8740



17.5507, 18.3079, 11.7846

Triad

The Triadic color harmony groups three colors that are evenly spaced from another and form a triangle on the color wheel.



19.2716, 18.3079, 12.8740



14.2561, 18.3079, 19.5101



18.9964, 18.3079, 29.7485

Complementary

The Complementary color scheme is a pair of colors which are on the opposite of each other on the color wheel.



19.2716, 18.3079, 12.8740



16.8818, 19.0076, 29.1649

Split Complementary

Split-complementary colors differ from the complementary color scheme. The scheme consists of three colors, the original color and two neighbors of the complement color.



17.2524, 18.3079, 31.1734



19.2716, 18.3079, 12.8740



14.5871, 18.3079, 24.7073

Square

The Square scheme is like the rectangle color scheme, but the four colors are evenly spaced on the color wheel.



19.2716, 18.3079, 12.8740



14.7200, 18.3079, 15.1935



15.6557, 18.3079, 29.1942



20.3894, 18.3079, 25.5708

Rectangle

The Rectangle color scheme consists of four colors that form a rectangle on the color wheel.



19.2716, 18.3079, 12.8740



16.4127, 18.3079, 12.0926



15.6557, 18.3079, 29.1942



18.4284, 18.3079, 30.5929

Sweetspot

The Sweet Spot groups the original color and five complimentary colors.



19.2721, 18.3088, 12.8744



42.1409, 43.2026, 42.0374



19.1371, 15.2466, 21.4372



9.5586, 9.7693, 9.3814



69.3244, 72.9347, 79.4259



10.7221, 11.2805, 12.2844

Same Dimension

The Same Dimension uses a secret algorithm to generate beautiful new colors.



19.2721, 18.3088, 12.8744



31.9508, 29.4590, 18.1803



22.4517, 24.6681, 13.9343



5.5632, 5.7327, 5.7027



11.1717, 7.4752, 0.8540



0.1267, 0.1112, 0.0148

Inverse Universe

The Inverse Universe completely reimagines the original color for something new.



16.8818, 19.0076, 29.1649



27.1194, 30.8581, 51.0649



14.0865, 13.4171, 28.2331



5.3937, 5.7831, 6.8607



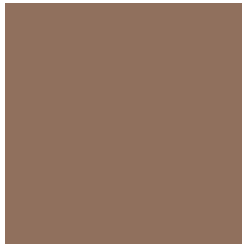
7.6160, 8.2180, 24.1619



0.0940, 0.1210, 0.2381

Previews

White Background



This preview shows how the XYZ color 19.2716, 18.3079, 12.8740 looks on a white background.

Color Contrast Check

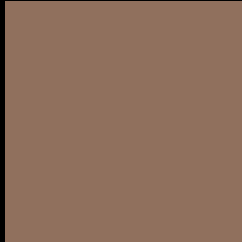
Large Text (above 18pt) WCAG AA ✓ Pass

Any Text WCAG AA ✓ Pass

Large Text (above 18pt) WCAG AAA ✓ Pass

Any Text WCAG AAA × Fail

Black Background



This preview shows how the XYZ color 19.2716, 18.3079, 12.8740 looks on a black background.

Color Contrast Check

Large Text (above 18pt) WCAG AA ✓ Pass

Any Text WCAG AA ✓ Pass

Large Text (above 18pt) WCAG AAA ✓ Pass

Any Text WCAG AAA × Fail

If you want to check with other color combinations, try the [Color Contrast Checker](#).

XYZ 19.2716, 18.3079, 12.8740

Background



This preview shows how black text looks on a background with the XYZ color 19.2716, 18.3079, 12.8740.



This preview shows how white text looks on a background with the XYZ color 19.2716, 18.3079,

Color Blindness Simulation

Color vision deficiency is a very complex topic, and I could not describe the different causes any better than Wikipedia does, so if you want to learn more, you should check out their [article about color blindness](#).

Dichromacy



Original Color

19.2716, 18.3079, 12.8740

Protanopia

17.3123, 18.4738, 13.7197

Deuteranopia

18.6406, 18.3139, 12.9084



Tritanopia

20.5336, 18.3326, 19.2859

Trichromacy



Original Color

19.2716, 18.3079, 12.8740

Protanomaly

17.9838, 18.3036, 13.4116

Deuteranomaly

18.8654, 18.2633, 12.8868

Tritanomaly

19.9598, 18.2543, 16.6588

Monochromacy



Original Color

19.2716, 18.3079, 12.8740

Achromatopsia

17.5343, 18.4475, 20.0893

Achromatomaly

17.9620, 18.2058, 17.3192

CSS Examples

Text

The CSS property to change the color of the text to XYZ 19.2716, 18.3079, 12.8740 is called "color". The color property can be set on classes, ids or directly on the HTML element.

This example shows how text in the color `rgb(144, 112, 93)` looks like.

```
.text, #text, p{  
    color:rgb(144, 112, 93)  
}
```

If you want to add a text shadow in that color use the text-shadow property, you can generate a text shadow directly with our [CSS Text Shadow Generator](#).

Here you see how black text with a 4 pixel rgb(144, 112, 93) colored shadow looks like.

```
.shadow{ text-shadow: 4px 4px 2px rgb(144, 112, 93) }
```

Border

The CSS property to change the border of an element to XYZ 19.2716, 18.3079, 12.8740 is called "border". The border property can be set on classes, ids or directly on the HTML element.

This example shows the color as border, it can be applied via the CSS property "border" or "border-color".

```
.border, #border, table{ border:4px solid rgb(144, 112, 93) }
```


If only the border color should be changed use the property `border-color`.

```
.border{ border-color:rgb(144, 112, 93) }
```

If you want to add a box shadow in that color use:

Here you see how a box with a 4 pixel `rgb(144, 112, 93)` colored shadow looks like.

```
.boxshadow{ -moz-box-shadow:4px 4px 4px  
4px rgb(144, 112, 93); -webkit-box-  
shadow:4px 4px 4px 4px rgb(144, 112, 93);  
box-shadow:4px 4px 4px 4px rgb(144, 112,  
93) }
```

Background

The CSS property to change the background color of an element to XYZ 19.2716, 18.3079, 12.8740 is called "background". The background property can be set on classes, ids or directly on the HTML element.

```
.background, #background, body{  
background: rgb(144, 112, 93) }
```

If only the background color should be changed can be used:

```
.background{ background-color: rgb(144,  
112, 93) }
```

This example shows the color as background, it is applied via the CSS property "background".

To optimize and compress your CSS code, you can use our [online CSS compressor and optimizer](#) based on csstidy. If you want to create a linear or radial gradient as background or border, check our [CSS Gradient Generator](#).

Hey! You found this booklet interesting? Support Converting Colors with the new Membership Option!

The pro membership hides all ads, plus gives you double the colors in the color bucket, and more awesome pro features!

[Learn more, Memberships starting at \\$2.50/m!](#)

**Follow me
on Twitter!**

@ConvertingColor