

# Converting Colors

XYZ(19.2689, 17.0878, 8.4121)

Have a look what the booklet for  
XYZ(19.2689, 17.0878, 8.4121)  
contains.

<b>XYZ(19.2569, 17.1408, 8.4245)</b> .....	3
<b><i>Conversions</i></b> .....	4
<b><i>Details</i></b> .....	6
<b><i>Harmonies</i></b> .....	12
<b><i>Previews</i></b> .....	24
<b><i>Color Blindness Simulation</i></b> .....	28
<b><i>CSS Examples</i></b> .....	31

# Color

**XYZ(19.2569, 17.1408,  
8.4245)**

# Conversions

## Conversions Part 1

<b>Format</b>	<b>Color</b>
Hex	996848
RGB	153, 104, 72
RGB Percent	60%, 41%, 28%
CMY	0.4000, 0.5921, 0.7176
CMYK	0.00, 0.32, 0.53, 0.40
HSL	24°, 36%, 44%
HSV	24°, 53%, 60%
XYZ	19.2569, 17.1408, 8.4245
YIQ	115.0030, 39.4760, 0.4360

# Conversions

## Conversions Part 2

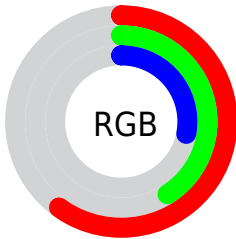
<b>Format</b>	<b>Color</b>
<b>R<sub>YB</sub></b>	153, 125, 72
Decimal	10053704
CIE <sub>Lab</sub>	48.44, 15.92, 25.87
CIE <sub>LCh</sub>	48, 30.380, 58.398
Yxy	17.1408, 0.4296, 0.3824
Android (android.graphics.Color)	4288243784 (0xFF996848)
YUV	115.0030, -21.2005, 33.3234
Hunter-Lab	41.4014, 10.5725, 16.9165

# Details

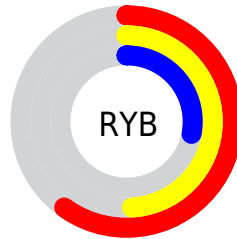
The XYZ color **19.2569, 17.1408, 8.4245** is a dark color, and the websafe version is hex **996633**. A complement of this color would be **15.2594, 17.3517, 32.6819**, and the grayscale version is **16.3509, 17.2024, 18.7334**.

A 20% lighter version of the original color is **41.7509, 38.5248, 23.3247**, and **6.8065, 5.6580, 1.7703** is the 20% darker color. If you saturate the color by 10%, you get **17.9376, 15.2040, 5.8212**, and if you desaturate by 10%, it is **20.8036, 19.3335, 11.7168**.

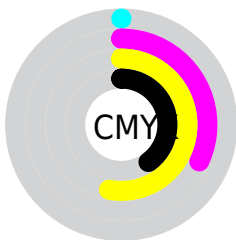
# Distribution



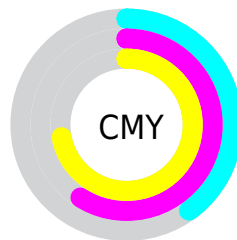
- Red (60%)
- Green (41%)
- Blue (28%)



- Red (60%)
- Yellow (49%)
- Blue (28%)



- Cyan (0%)
- Magenta (32%)
- Yellow (53%)
- Black (40%)



- Cyan (40%)
- Magenta (59%)
- Yellow (72%)

# Brightness & Saturation Gradients

These gradients show how the XYZ color 19.2569, 17.1408, 8.4245 changes by changing the brightness by 10 percent. The first figure shows a shift by +10% for each color and the second figure -10%.

Similar to the brightness gradients but the following saturation gradients show a change of the XYZ color 19.2569, 17.1408, 8.4245 by changing the saturation by 10% instead.



■ 19.2569, 17.1408,  
8.4245

■ 19.2569, 17.1408,  
8.4245

240.7743,  
235.9825, 189.0819

■ 11.9612, 10.3349,  
4.2761

■ 41.6813, 38.5677,  
23.3463

■ 6.7892, 5.6216,  
1.7780

■ 57.5406, 53.9575,  
34.9568

■ 3.3758, 2.6164,  
0.4134

■ 76.9852, 72.9774,  
49.8917

■ 1.3555, 0.9349,  
0.0000

■ 100.3804, 96.0119,  
68.5696

■ 0.2242, 0.0000,  
0.0000

■ 128.0916,  
123.4452, 91.4090

■ 0.0000, 0.0000,  
0.0000

160.4840,

155.6618, 118.8285

197.9232,  
193.0461, 151.2466

■ 19.2569, 17.1408,  
8.4245

■ 19.2569, 17.1408,  
8.4245

■ 17.9376, 15.2040,  
5.8212

■ 20.8036, 19.3335,  
11.7168

■ 16.8317, 13.5103,  
3.8554

■ 22.5879, 21.7892,  
15.7425

■ 15.9254, 12.0493,  
2.4696

■ 24.6210, 24.5179,  
20.5436

■ 15.2023, 10.8085,  
1.5956

■ 26.9128, 27.5281,  
26.1583

■ 14.7764, 10.0514,  
1.1613

■ 29.4728, 30.8281,  
32.6225

■ 32.3099, 34.4257,  
39.9699

■ 35.4324, 38.3284,  
48.2322

■ 38.8486, 42.5435,  
57.4397

■ 42.5662, 47.0780,  
67.6213

# Harmonies

## Analogous

The Analogous color harmony consists of three colors that are next to each other on the color wheel.



21.4616, 17.1408, 12.2877



19.2569, 17.1408, 8.4245



16.4418, 17.1408, 7.1610

# Triad

The Triadic color harmony groups three colors that are evenly spaced from another and form a triangle on the color wheel.



19.2569, 17.1408, 8.4245



11.5109, 17.1408, 18.2386



18.9689, 17.1408, 35.6313

# Complementary

The Complementary color scheme is a pair of colors which are on the opposite of each other on the color wheel.



19.2569, 17.1408, 8.4245



15.2594, 17.3517, 32.6819

# Split Complementary

Split-complementary colors differ from the complementary color scheme. The scheme consists of three colors, the original color and two neighbors of the complement color.



16.1428, 17.1408, 38.5328



19.2569, 17.1408, 8.4245



12.0270, 17.1408, 26.9331

# Square

The Square scheme is like the rectangle color scheme, but the four colors are evenly spaced on the color wheel.



19.2569, 17.1408, 8.4245



12.1496, 17.1408, 11.7351



13.6479, 17.1408, 34.9765



21.2824, 17.1408, 27.8911



# Rectangle

The Rectangle color scheme consists of four colors that form a rectangle on the color wheel.



19.2569, 17.1408, 8.4245



14.6621, 17.1408, 7.5789



13.6479, 17.1408, 34.9765



18.0380, 17.1408, 37.2874

# Sweetspot

The Sweet Spot groups the original color and five complimentary colors.



19.2573, 17.1416, 8.4248



46.7594, 47.4225, 43.2850



18.9641, 12.8111, 19.8695



10.1548, 10.2482, 9.1402



72.9764, 76.7769, 83.6100



11.9732, 12.5967, 13.7178



# Same Dimension

The Same Dimension uses a secret algorithm to generate beautiful new colors.



19.2573, 17.1416, 8.4248



31.6306, 26.4854, 9.5085



24.2118, 27.0507, 10.0763



6.3990, 6.6031, 6.5431



12.2433, 8.3690, 0.9701



0.2170, 0.1930, 0.0258



# Inverse Universe

The Inverse Universe completely reimagines the original color for something new.



15.2594, 17.3517, 32.6819



23.6253, 26.8515, 57.9097



11.3984, 9.6298, 31.3949



6.1796, 6.6166, 7.8804



7.9878, 8.3722, 26.1027

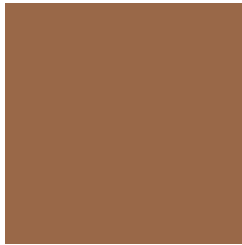


0.1548, 0.1958, 0.4020



# Previews

## White Background



This preview shows how the XYZ color 19.2569, 17.1408, 8.4245 looks on a white background.

## Color Contrast Check

Large Text (above 18pt) WCAG AA ✓ Pass

Any Text WCAG AA ✓ Pass

Large Text (above 18pt) WCAG AAA ✓ Pass

Any Text WCAG AAA × Fail



# Black Background



This preview shows how the XYZ color 19.2569, 17.1408, 8.4245 looks on a black background.

## Color Contrast Check

Large Text (above 18pt) WCAG AA ✓ Pass

Any Text WCAG AA × Fail

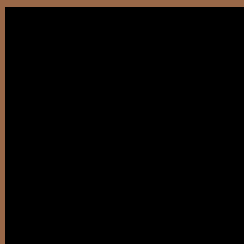
Large Text (above 18pt) WCAG AAA × Fail

Any Text WCAG AAA × Fail

If you want to check with other color combinations, try the [Color Contrast Checker](#).

**XYZ 19.2569, 17.1408, 8.4245**

## **Background**



This preview shows how black text looks on a background with the XYZ color 19.2569, 17.1408, 8.4245.



This preview shows how white text looks on a background with the XYZ color 19.2569, 17.1408,



# Color Blindness Simulation

Color vision deficiency is a very complex topic, and I could not describe the different causes any better than Wikipedia does, so if you want to learn more, you should check out their [article about color blindness](#).

## Dichromacy



### Original Color

19.2569, 17.1408, 8.4245

### Protanopia

15.8927, 17.1432, 9.3088

### Deuteranopia

17.5285, 17.1822, 8.3539



## Tritanopia

20.9213, 17.2438, 16.1356

# Trichromacy



## Original Color

19.2569, 17.1408, 8.4245

## Protanomaly

16.9461, 17.0278, 9.0501

## Deuteranomaly

18.1769, 17.1998, 8.3231

## Tritanomaly

20.1916, 17.0841, 12.8230

# Monochromacy



## Original Color

19.2569, 17.1408, 8.4245

## Achromatopsia

16.2955, 17.1441, 18.6699

## Achromatomaly

16.9898, 16.9369, 14.1781

# CSS Examples

## Text

The CSS property to change the color of the text to XYZ 19.2569, 17.1408, 8.4245 is called "color". The color property can be set on classes, ids or directly on the HTML element.

This example shows how text in the color `rgb(153, 104, 72)` looks like.

```
.text, #text, p{  
    color:rgb(153, 104, 72)  
}
```

If you want to add a text shadow in that color use the text-shadow property, you can generate a text shadow directly with our [CSS Text Shadow Generator](#).

Here you see how black text with a 4 pixel rgb(153, 104, 72) colored shadow looks like.

```
.shadow{ text-shadow: 4px 4px 2px rgb(153, 104, 72) }
```

## Border

The CSS property to change the border of an element to XYZ 19.2569, 17.1408, 8.4245 is called "border". The border property can be set on classes, ids or directly on the HTML element.

This example shows the color as border, it can be applied via the CSS property "border" or "border-color".

```
.border, #border, table{ border:4px solid rgb(153, 104, 72) }
```



If only the border color should be changed use the property `border-color`.

```
.border{ border-color:rgb(153, 104, 72) }
```

If you want to add a box shadow in that color use:

Here you see how a box with a 4 pixel `rgb(153, 104, 72)` colored shadow looks like.

```
.boxshadow{ -moz-box-shadow:4px 4px 4px  
4px rgb(153, 104, 72); -webkit-box-  
shadow:4px 4px 4px 4px rgb(153, 104, 72);  
box-shadow:4px 4px 4px 4px rgb(153, 104,  
72) }
```

# Background

The CSS property to change the background color of an element to XYZ 19.2569, 17.1408, 8.4245 is called "background". The background property can be set on classes, ids or directly on the HTML element.

```
.background, #background, body{  
background: rgb(153, 104, 72) }
```

If only the background color should be changed can be used:

```
.background{ background-color: rgb(153,  
104, 72) }
```

This example shows the color as background, it is applied via the CSS property "background".

To optimize and compress your CSS code, you can use our [online CSS compressor and optimizer](#) based on csstidy. If you want to create a linear or radial gradient as background or border, check our [CSS Gradient Generator](#).

Hey! You found this booklet interesting? Support Converting Colors with the new Membership Option!

The pro membership hides all ads, plus gives you double the colors in the color bucket, and more awesome pro features!

**[Learn more, Memberships starting at \\$2.50/m!](#)**

**Follow me  
on Twitter!**

@ConvertingColor