

# Converting Colors

XYZ(19.3391, 18.1632, 13.0764)

Have a look what the booklet for  
XYZ(19.3391, 18.1632, 13.0764)  
contains.

<b>XYZ(19.3819, 18.1968, 13.0805)</b> .....	3
<i><b>Conversions</b></i> .....	4
<i><b>Details</b></i> .....	6
<i><b>Harmonies</b></i> .....	12
<i><b>Previews</b></i> .....	24
<i><b>Color Blindness Simulation</b></i> .....	28
<i><b>CSS Examples</b></i> .....	31

# Color

**XYZ(19.3819, 18.1968,  
13.0805)**

# Conversions

## Conversions Part 1

Format	Color
Hex	916F5E
RGB	145, 111, 94
RGB Percent	57%, 44%, 37%
CMY	0.4314, 0.5647, 0.6314
CMYK	0.00, 0.23, 0.35, 0.43
HSL	20°, 21%, 47%
HSV	20°, 35%, 57%
XYZ	19.3819, 18.1968, 13.0805
YIQ	119.2280, 25.7210, 1.9210

# Conversions

## Conversions Part 2

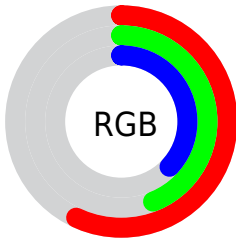
<b>Format</b>	<b>Color</b>
<b>R<sub>YB</sub></b>	145, 120, 94
Decimal	9531230
CIE <sub>Lab</sub>	49.73, 10.96, 14.65
CIE <sub>LCh</sub>	50, 18.298, 53.189
Yxy	18.1968, 0.3826, 0.3592
Android (android.graphics.Color)	4287721310 (0xFF916F5E)
YUV	119.2280, -12.4374, 22.6020
Hunter-Lab	42.6577, 6.4520, 11.6798

# Details

The XYZ color **19.3819, 18.1968, 13.0805** is a dark color, and the websafe version is hex **996666**. A complement of this color would be **17.4459, 19.8617, 29.7023**, and the grayscale version is **17.6397, 18.5583, 20.2100**.

A 20% lighter version of the original color is **41.9507, 40.4874, 31.9894**, and **6.8252, 6.0956, 3.6131** is the 20% darker color. If you saturate the color by 10%, you get **17.7933, 15.9648, 9.6368**, and if you desaturate by 10%, it is **21.2079, 20.7078, 17.2068**.

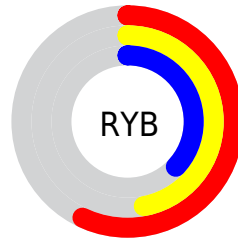
# Distribution



Red (57%)

Green (44%)

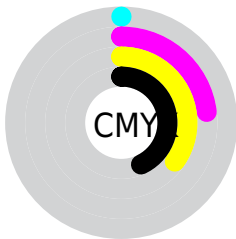
Blue (37%)



Red (57%)

Yellow (47%)

Blue (37%)

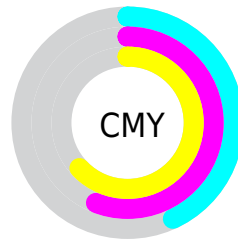


Cyan (0%)

Magenta (23%)

Yellow (35%)

Black (43%)



Cyan (43%)

Magenta (56%)

Yellow (63%)

# Brightness & Saturation Gradients

These gradients show how the XYZ color 19.3819, 18.1968, 13.0805 changes by changing the brightness by 10 percent. The first figure shows a shift by +10% for each color and the second figure -10%.

Similar to the brightness gradients but the following saturation gradients show a change of the XYZ color 19.3819, 18.1968, 13.0805 by changing the saturation by 10% instead.



■ 19.3819, 18.1968,  
13.0805

■ 19.3819, 18.1968,  
13.0805

241.4469,  
241.9780, 222.6589

■ 12.0522, 11.0914,  
7.3526

■ 41.8903, 40.3724,  
32.1416

■ 6.8517, 6.1283,  
3.6018

■ 57.7998, 56.2113,  
46.3120

■ 3.4150, 2.9233,  
1.4095

■ 77.2998, 75.7302,  
64.1335

■ 1.3768, 1.0918,  
0.1491

■ 100.7559, 99.3135,  
86.0249

■ 0.2396, 0.0000,  
0.0000

128.5332,  
127.3455, 112.4046

■ 0.0000, 0.0000,  
0.0000

160.9973,

160.2107, 143.6911

198.5134,  
198.2934, 180.3030

■ 19.3819, 18.1968,  
13.0805

■ 19.3819, 18.1968,  
13.0805

■ 17.7933, 15.9648,  
9.6368

■ 21.2079, 20.7078,  
17.2068

■ 16.4301, 13.9991,  
6.8373

■ 23.2796, 23.5045,  
22.0491

■ 15.2815, 12.2900,  
4.6414

■ 25.6067, 26.5968,  
27.6399

■ 14.3350, 10.8261,  
3.0032

■ 28.1980, 29.9934,  
34.0094

■ 13.5767, 9.5949,  
1.8705

■ 31.0615, 33.7023,  
41.1860

■ 12.9890, 8.5821,  
1.1730

■ 34.2054, 37.7314,  
49.1968

■ 12.7481, 8.1618,  
0.9035

■ 37.6371, 42.0884,  
58.0675

■ 41.3639, 46.7806,  
67.8230

■ 45.3929, 51.8151,  
78.4868

# Harmonies

## Analogous

The Analogous color harmony consists of three colors that are next to each other on the color wheel.



20.5620, 18.1968, 16.2696



19.3819, 18.1968, 13.0805



17.6959, 18.1968, 11.7305

# Triad

The Triadic color harmony groups three colors that are evenly spaced from another and form a triangle on the color wheel.



19.3819, 18.1968, 13.0805



14.1772, 18.1968, 18.6968



18.6488, 18.1968, 30.0081

# Complementary

The Complementary color scheme is a pair of colors which are on the opposite of each other on the color wheel.



19.3819, 18.1968, 13.0805



17.4459, 19.8617, 29.7023

# Split Complementary

Split-complementary colors differ from the complementary color scheme. The scheme consists of three colors, the original color and two neighbors of the complement color.



16.9012, 18.1968, 30.9510



19.3819, 18.1968, 13.0805



14.3947, 18.1968, 23.8373

# Square

The Square scheme is like the rectangle color scheme, but the four colors are evenly spaced on the color wheel.



19.3819, 18.1968, 13.0805



14.7491, 18.1968, 14.6016



15.3645, 18.1968, 28.5321



20.1193, 18.1968, 26.1373



# Rectangle

The Rectangle color scheme consists of four colors that form a rectangle on the color wheel.



19.3819, 18.1968, 13.0805



16.5422, 18.1968, 11.8617



15.3645, 18.1968, 28.5321



18.0714, 18.1968, 30.7021

# Sweetspot

The Sweet Spot groups the original color and five complimentary colors.



19.3824, 18.1977, 13.0809



43.2779, 44.2123, 43.2708



19.5762, 15.5839, 22.3984



9.5200, 9.6921, 9.3685



69.3244, 72.9347, 79.4259



10.7221, 11.2805, 12.2844



# Same Dimension

The Same Dimension uses a secret algorithm to generate beautiful new colors.



19.3824, 18.1977, 13.0809



32.4820, 29.4657, 18.5697



22.5723, 24.5775, 14.1442



5.5466, 5.6996, 5.6972



10.9564, 7.0446, 0.7823



0.1234, 0.1047, 0.0137



# Inverse Universe

The Inverse Universe completely reimagines the original color for something new.



17.4459, 19.8617, 29.7023



28.4837, 32.8791, 52.8186



14.5278, 14.0256, 28.7296



5.4108, 5.8175, 6.8665



8.0476, 9.0813, 24.3058

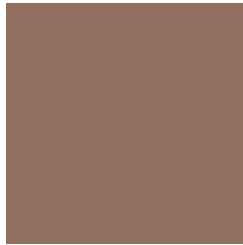


0.0973, 0.1275, 0.2392



# Previews

## White Background



This preview shows how the XYZ color 19.3819, 18.1968, 13.0805 looks on a white background.

## Color Contrast Check

Large Text (above 18pt) WCAG AA ✓ Pass

Any Text WCAG AA ✓ Pass

Large Text (above 18pt) WCAG AAA ✓ Pass

Any Text WCAG AAA × Fail



# Black Background



This preview shows how the XYZ color 19.3819, 18.1968, 13.0805 looks on a black background.

## Color Contrast Check

Large Text (above 18pt) WCAG AA ✓ Pass

Any Text WCAG AA ✓ Pass

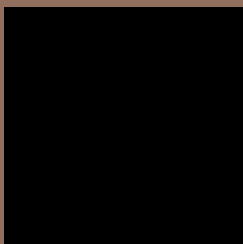
Large Text (above 18pt) WCAG AAA ✓ Pass

Any Text WCAG AAA × Fail

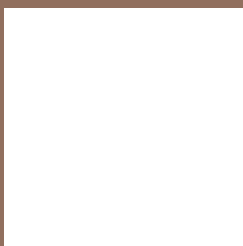
If you want to check with other color combinations, try the [Color Contrast Checker](#).

**XYZ 19.3819, 18.1968, 13.0805**

## **Background**



This preview shows how black text looks on a background with the XYZ color 19.3819, 18.1968, 13.0805.



This preview shows how white text looks on a background with the XYZ color 19.3819, 18.1968,



# Color Blindness Simulation

Color vision deficiency is a very complex topic, and I could not describe the different causes any better than Wikipedia does, so if you want to learn more, you should check out their [article about color blindness](#).

## Dichromacy



### Original Color

19.3819, 18.1968, 13.0805

### Protanopia

17.0935, 18.1799, 13.9174

### Deuteranopia

18.4743, 18.2282, 12.9006



## Tritanopia

20.5476, 18.1891, 18.9509

# Trichromacy



## Original Color

19.3819, 18.1968, 13.0805

## Protanomaly

17.7578, 18.0115, 13.6070

## Deuteranomaly

18.8654, 18.2633, 12.8868

## Tritanomaly

20.0295, 18.1310, 16.6313

# Monochromacy



## Original Color

19.3819, 18.1968, 13.0805

## Achromatopsia

17.5343, 18.4475, 20.0893

## Achromatomaly

17.9620, 18.2058, 17.3192

# CSS Examples

## Text

The CSS property to change the color of the text to XYZ 19.3819, 18.1968, 13.0805 is called "color". The color property can be set on classes, ids or directly on the HTML element.

This example shows how text in the color `rgb(145, 111, 94)` looks like.

```
.text, #text, p{  
    color:rgb(145, 111, 94)  
}
```

If you want to add a text shadow in that color use the text-shadow property, you can generate a text shadow directly with our [CSS Text Shadow Generator](#).

Here you see how black text with a 4 pixel rgb(145, 111, 94) colored shadow looks like.

```
.shadow{ text-shadow: 4px 4px 2px rgb(145, 111, 94) }
```

## Border

The CSS property to change the border of an element to XYZ 19.3819, 18.1968, 13.0805 is called "border". The border property can be set on classes, ids or directly on the HTML element.

This example shows the color as border, it can be applied via the CSS property "border" or "border-color".

```
.border, #border, table{ border:4px solid rgb(145, 111, 94) }
```



If only the border color should be changed use the property `border-color`.

```
.border{ border-color:rgb(145, 111, 94) }
```

If you want to add a box shadow in that color use:

Here you see how a box with a 4 pixel `rgb(145, 111, 94)` colored shadow looks like.

```
.boxshadow{ -moz-box-shadow:4px 4px 4px  
4px rgb(145, 111, 94); -webkit-box-  
shadow:4px 4px 4px 4px rgb(145, 111, 94);  
box-shadow:4px 4px 4px 4px rgb(145, 111,  
94) }
```

# Background

The CSS property to change the background color of an element to XYZ 19.3819, 18.1968, 13.0805 is called "background". The background property can be set on classes, ids or directly on the HTML element.

```
.background, #background, body{  
background: rgb(145, 111, 94) }
```

If only the background color should be changed can be used:

```
.background{ background-color: rgb(145,  
111, 94) }
```

This example shows the color as background, it is applied via the CSS property "background".

To optimize and compress your CSS code, you can use our [online CSS compressor and optimizer](#) based on csstidy. If you want to create a linear or radial gradient as background or border, check our [CSS Gradient Generator](#).

Hey! You found this booklet interesting? Support Converting Colors with the new Membership Option!

The pro membership hides all ads, plus gives you double the colors in the color bucket, and more awesome pro features!

**[Learn more, Memberships starting at \\$2.50/m!](#)**

**Follow me  
on Twitter!**

@ConvertingColor