

Converting Colors

XYZ(19.5849, 17.9956, 17.0983)

Have a look what the booklet for
XYZ(19.5849, 17.9956, 17.0983)
contains.

XYZ(19.7181, 18.1173, 17.2096)	3
<i>Conversions</i>	4
<i>Details</i>	6
<i>Harmonies</i>	12
<i>Previews</i>	24
<i>Color Blindness Simulation</i>	28
<i>CSS Examples</i>	31

Color

**XYZ(19.7181, 18.1173,
17.2096)**

Conversions

Conversions Part 1

Format	Color
Hex	8F6E6E
RGB	143, 110, 110
RGB Percent	56%, 43%, 43%
CMY	0.4392, 0.5686, 0.5686
CMYK	0.00, 0.23, 0.23, 0.44
HSL	0°, 13%, 50%
HSV	0°, 23%, 56%
XYZ	19.7181, 18.1173, 17.2096
YIQ	119.8670, 19.6680, 6.9960

Conversions

Conversions Part 2

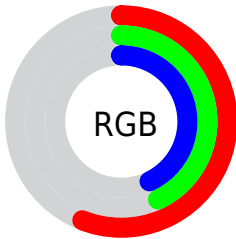
Format	Color
R _Y B	143, 110, 110
Decimal	9399918
CIE Lab	49.64, 13.07, 5.03
CIE LCh	50, 14.005, 21.066
Yxy	18.1173, 0.3582, 0.3291
Android (android.graphics.Color)	4287589998 (0xFF8F6E6E)
YUV	119.8670, -4.8644, 20.2876
Hunter-Lab	42.5644, 8.2029, 5.8230

Details

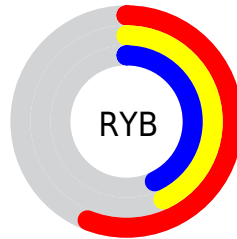
The XYZ color **19.7181, 18.1173, 17.2096** is a dark color, and the websafe version is hex **996666**. A complement of this color would be **21.2106, 24.9424, 29.6832**, and the grayscale version is **17.8212, 18.7493, 20.4179**.

A 20% lighter version of the original color is **42.4679, 40.3196, 39.7266**, and **7.0335, 6.0794, 5.5054** is the 20% darker color. If you saturate the color by 10%, you get **17.5813, 14.9907, 12.9611**, and if you desaturate by 10%, it is **22.2305, 21.7938, 22.2037**.

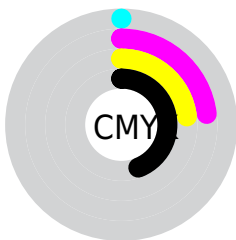
Distribution



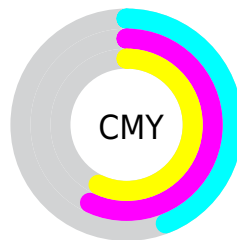
- Red (56%)
- Green (43%)
- Blue (43%)



- Red (56%)
- Yellow (43%)
- Blue (43%)



- Cyan (0%)
- Magenta (23%)
- Yellow (23%)
- Black (44%)



- Cyan (44%)
- Magenta (57%)
- Yellow (57%)

Brightness & Saturation Gradients

These gradients show how the XYZ color 19.7181, 18.1173, 17.2096 changes by changing the brightness by 10 percent. The first figure shows a shift by +10% for each color and the second figure -10%.

Similar to the brightness gradients but the following saturation gradients show a change of the XYZ color 19.7181, 18.1173, 17.2096 by changing the saturation by 10% instead.

■ 19.7181, 18.1173,
17.2096

■ 19.7181, 18.1173,
17.2096

243.2477,
241.5314, 248.4621

■ 12.2974, 11.0342,
10.2205

■ 42.4516, 40.2371,
39.4814

■ 7.0202, 6.0899,
5.4379

■ 58.4951, 56.0426,
55.6011

■ 3.5212, 2.8998,
2.4432

■ 78.1435, 75.5244,
75.6015

■ 1.4350, 1.0796,
0.8098

■ 101.7623, 99.0669,
99.9011

■ 0.2809, 0.0000,
0.0000

129.7168,
127.0544, 128.9184

■ 0.0000, 0.0000,
0.0000

162.3722,

159.8714, 163.0720

200.0941,
197.9023, 202.7804

■ 19.7181, 18.1173,
17.2096

■ 19.7181, 18.1173,
17.2096

■ 17.5813, 14.9907,
12.9611

■ 22.2305, 21.7938,
22.2037

■ 15.8007, 12.3852,
9.4214

■ 25.1338, 26.0421,
27.9754

■ 14.3574, 10.2732,
6.5523

■ 28.4442, 30.8861,
34.5566

■ 13.2302, 8.6237,
4.3114

■ 32.1766, 36.3475,
41.9766

■ 12.3953, 7.4019,
2.6518

■ 36.3450, 42.4470,
50.2636

■ 11.8257, 6.5684,
1.5197

■ 40.9630, 49.2043,
59.4443

■ 11.4896, 6.0765,
0.8516

■ 46.0434, 56.6382,
69.5443

■ 11.3279, 5.8399,
0.5302

■ 51.5985, 64.7667,
80.5883

■ 57.6403, 73.6074,
92.5998

Harmonies

Analogous

The Analogous color harmony consists of three colors that are next to each other on the color wheel.



19.8716, 18.1173, 20.8859



19.7181, 18.1173, 17.2096



18.8774, 18.1173, 14.5607

Triad

The Triadic color harmony groups three colors that are evenly spaced from another and form a triangle on the color wheel.



19.7181, 18.1173, 17.2096



15.3064, 18.1173, 15.4731



16.8259, 18.1173, 27.8817

Complementary

The Complementary color scheme is a pair of colors which are on the opposite of each other on the color wheel.



19.7181, 18.1173, 17.2096



21.2106, 24.9424, 29.6832

Split Complementary

Split-complementary colors differ from the complementary color scheme. The scheme consists of three colors, the original color and two neighbors of the complement color.



15.6625, 18.1173, 25.9894



19.7181, 18.1173, 17.2096



14.8153, 18.1173, 18.6111

Square

The Square scheme is like the rectangle color scheme, but the four colors are evenly spaced on the color wheel.



19.7181, 18.1173, 17.2096



16.3170, 18.1173, 13.6515



14.9422, 18.1173, 22.4779



18.1556, 18.1173, 27.3802

Rectangle

The Rectangle color scheme consists of four colors that form a rectangle on the color wheel.



19.7181, 18.1173, 17.2096



18.0631, 18.1173, 13.5787



14.9422, 18.1173, 22.4779



16.4035, 18.1173, 27.4964

Sweetspot

The Sweet Spot groups the original color and five complimentary colors.



19.7186, 18.1181, 17.2100



42.8073, 43.4131, 45.7192



21.8617, 18.9749, 28.4970



9.7565, 9.8676, 10.3649



69.3244, 72.9347, 79.4259



10.7221, 11.2805, 12.2844

Same Dimension

The Same Dimension uses a secret algorithm to generate beautiful new colors.



19.7186, 18.1181, 17.2100



33.1208, 29.2391, 26.4625



21.6673, 22.0155, 17.8595



5.4089, 5.4242, 5.6513



10.0160, 5.1636, 0.4688



0.0958, 0.0494, 0.0045

Inverse Universe

The Inverse Universe completely reimagines the original color for something new.



21.2106, 24.9424, 29.6832



36.3045, 43.8014, 53.0791



18.9135, 20.3483, 28.9175



5.5602, 6.1163, 6.9163



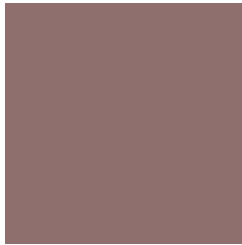
13.0671, 19.1201, 25.9789



0.1249, 0.1828, 0.2484

Previews

White Background



This preview shows how the XYZ color 19.7181, 18.1173, 17.2096 looks on a white background.

Color Contrast Check

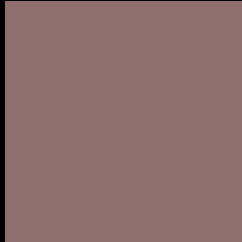
Large Text (above 18pt) WCAG AA ✓ Pass

Any Text WCAG AA ✓ Pass

Large Text (above 18pt) WCAG AAA ✓ Pass

Any Text WCAG AAA × Fail

Black Background



This preview shows how the XYZ color 19.7181, 18.1173, 17.2096 looks on a black background.

Color Contrast Check

Large Text (above 18pt) WCAG AA ✓ Pass

Any Text WCAG AA ✓ Pass

Large Text (above 18pt) WCAG AAA ✓ Pass

Any Text WCAG AAA × Fail

If you want to check with other color combinations, try the [Color Contrast Checker](#).

XYZ 19.7181, 18.1173, 17.2096

Background



This preview shows how black text looks on a background with the XYZ color 19.7181, 18.1173, 17.2096.



This preview shows how white text looks on a background with the XYZ color 19.7181, 18.1173,

Color Blindness Simulation

Color vision deficiency is a very complex topic, and I could not describe the different causes any better than Wikipedia does, so if you want to learn more, you should check out their [article about color blindness](#).

Dichromacy



Original Color

19.7181, 18.1173, 17.2096

Protanopia

17.4009, 18.2367, 18.5225

Deuteranopia

18.4505, 18.1253, 16.9941



Tritanopia

20.1811, 18.1509, 19.2694

Trichromacy



Original Color

19.7181, 18.1173, 17.2096

Protanomaly

18.1646, 18.1208, 18.1631

Deuteranomaly

18.9820, 18.2327, 16.9868

Tritanomaly

20.0075, 18.0815, 18.3552

Monochromacy



Original Color

19.7181, 18.1173, 17.2096

Achromatopsia

17.8524, 18.7821, 20.4537

Achromatomaly

18.2999, 18.3409, 19.0986

CSS Examples

Text

The CSS property to change the color of the text to XYZ 19.7181, 18.1173, 17.2096 is called "color". The color property can be set on classes, ids or directly on the HTML element.

This example shows how text in the color `rgb(143, 110, 110)` looks like.

```
.text, #text, p{  
    color:rgb(143, 110, 110)  
}
```

If you want to add a text shadow in that color use the text-shadow property, you can generate a text shadow directly with our [CSS Text Shadow Generator](#).

Here you see how black text with a 4 pixel rgb(143, 110, 110) colored shadow looks like.

```
.shadow{ text-shadow: 4px 4px 2px rgb(143, 110, 110) }
```

Border

The CSS property to change the border of an element to XYZ 19.7181, 18.1173, 17.2096 is called "border". The border property can be set on classes, ids or directly on the HTML element.

This example shows the color as border, it can be applied via the CSS property "border" or "border-color".

```
.border, #border, table{ border:4px solid rgb(143, 110, 110) }
```


If only the border color should be changed use the property `border-color`.

```
.border{ border-color:rgb(143, 110, 110) }
```

If you want to add a box shadow in that color use:

Here you see how a box with a 4 pixel `rgb(143, 110, 110)` colored shadow looks like.

```
.boxshadow{ -moz-box-shadow:4px 4px 4px  
4px rgb(143, 110, 110); -webkit-box-  
shadow:4px 4px 4px 4px rgb(143, 110, 110);  
box-shadow:4px 4px 4px 4px rgb(143, 110,  
110) }
```

Background

The CSS property to change the background color of an element to XYZ 19.7181, 18.1173, 17.2096 is called "background". The background property can be set on classes, ids or directly on the HTML element.

```
.background, #background, body{  
background: rgb(143, 110, 110) }
```

If only the background color should be changed can be used:

```
.background{ background-color: rgb(143,  
110, 110) }
```

This example shows the color as background, it is applied via the CSS property "background".

To optimize and compress your CSS code, you can use our [online CSS compressor and optimizer](#) based on csstidy. If you want to create a linear or radial gradient as background or border, check our [CSS Gradient Generator](#).

Hey! You found this booklet interesting? Support Converting Colors with the new Membership Option!

The pro membership hides all ads, plus gives you double the colors in the color bucket, and more awesome pro features!

[Learn more, Memberships starting at \\$2.50/m!](#)

**Follow me
on Twitter!**

@ConvertingColor