

Converting Colors

XYZ(19.5954, 14.4502, 8.8300)

Have a look what the booklet for
XYZ(19.5954, 14.4502, 8.8300)
contains.

XYZ(19.6667, 14.4629, 8.7763)	3
<i>Conversions</i>	4
<i>Details</i>	6
<i>Harmonies</i>	12
<i>Previews</i>	24
<i>Color Blindness Simulation</i>	28
<i>CSS Examples</i>	31

Color

**XYZ(19.6667, 14.4629,
8.7763)**

Conversions

Conversions Part 1

Format	Color
Hex	A4524D
RGB	164, 82, 77
RGB Percent	64%, 32%, 30%
CMY	0.3569, 0.6784, 0.6980
CMYK	0.00, 0.50, 0.53, 0.36
HSL	3°, 36%, 47%
HSV	3°, 53%, 64%
XYZ	19.6667, 14.4629, 8.7763
YIQ	105.9480, 50.4770, 15.8290

Conversions

Conversions Part 2

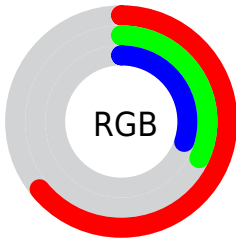
Format	Color
RYB	164, 82, 77
Decimal	10768973
CIELab	44.89, 33.28, 18.59
CIELCh	45, 38.118, 29.187
Yxy	14.4629, 0.4584, 0.3371
Android (android.graphics.Color)	4288959053 (0xFFA4524D)
YUV	105.9480, -14.2714, 50.9116
Hunter-Lab	38.0301, 25.7559, 12.9386

Details

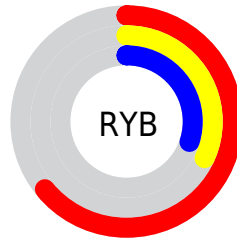
The XYZ color **19.6667, 14.4629, 8.7763** is a dark color, and the websafe version is hex **CC6666**. A complement of this color would be **22.1589, 29.0530, 39.5618**, and the grayscale version is **13.7139, 14.4281, 15.7122**.

A 20% lighter version of the original color is **42.2776, 33.8110, 24.0366**, and **7.0027, 4.3857, 1.9163** is the 20% darker color. If you saturate the color by 10%, you get **18.1218, 12.1859, 5.7557**, and if you desaturate by 10%, it is **21.6209, 17.3249, 12.6538**.

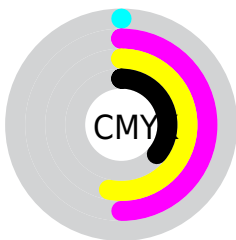
Distribution



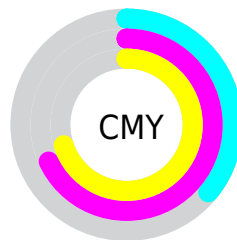
- Red (64%)
- Green (32%)
- Blue (30%)



- Red (64%)
- Yellow (32%)
- Blue (30%)



- Cyan (0%)
- Magenta (50%)
- Yellow (53%)
- Black (36%)



- Cyan (36%)
- Magenta (68%)
- Yellow (70%)

Brightness & Saturation Gradients

These gradients show how the XYZ color 19.6667, 14.4629, 8.7763 changes by changing the brightness by 10 percent. The first figure shows a shift by +10% for each color and the second figure -10%.

Similar to the brightness gradients but the following saturation gradients show a change of the XYZ color 19.6667, 14.4629, 8.7763 by changing the saturation by 10% instead.

■ 19.6667, 14.4629,
8.7763

■ 19.6667, 14.4629,
8.7763

242.9731,
220.0918, 191.8564

■ 12.2599, 8.4433,
4.5007

■ 42.3659, 33.9081,
24.0376

■ 6.9944, 4.3799,
1.9039

■ 58.3889, 48.1026,
35.8605

■ 3.5049, 1.8883,
0.4952

■ 78.0148, 65.7908,
51.0362

■ 1.4260, 0.5413,
0.0000

■ 101.6088, 87.3572,
69.9833

■ 0.2747, 0.0000,
0.0000

■ 129.5362,
113.1860, 93.1204

■ 0.0000, 0.0000,
0.0000

162.1625,

143.6618, 120.8659

199.8530,
179.1690, 153.6384

■ 19.6667, 14.4629,
8.7763

■ 19.6667, 14.4629,
8.7763

■ 18.1218, 12.1859,
5.7557

■ 21.6209, 17.3249,
12.6538

■ 16.9560, 10.4515,
3.5264

■ 24.0095, 20.8060,
17.4456

■ 16.1369, 9.2151,
2.0144

■ 26.8569, 24.9404,
23.2052

■ 15.6259, 8.4242,
1.1314

■ 30.1853, 29.7592,
29.9815

■ 15.4122, 8.0973,
0.7506

■ 34.0157, 35.2913,
37.8204

■ 38.3675, 41.5642,
46.7647

■ 43.2594, 48.6039,
56.8550

■ 48.7089, 56.4348,
68.1299

■ 54.7329, 65.0808,
80.6261

Harmonies

Analogous

The Analogous color harmony consists of three colors that are next to each other on the color wheel.



20.6473, 14.4629, 15.9924



19.6667, 14.4629, 8.7763



17.0486, 14.4629, 5.1320

Triad

The Triadic color harmony groups three colors that are evenly spaced from another and form a triangle on the color wheel.



19.6667, 14.4629, 8.7763



9.2175, 14.4629, 8.4938



13.6617, 14.4629, 39.8803

Complementary

The Complementary color scheme is a pair of colors which are on the opposite of each other on the color wheel.



19.6667, 14.4629, 8.7763



22.1589, 29.0530, 39.5618

Split Complementary

Split-complementary colors differ from the complementary color scheme. The scheme consists of three colors, the original color and two neighbors of the complement color.



10.9010, 14.4629, 35.5515



19.6667, 14.4629, 8.7763



8.5852, 14.4629, 15.5054

Square

The Square scheme is like the rectangle color scheme, but the four colors are evenly spaced on the color wheel.



19.6667, 14.4629, 8.7763



11.0277, 14.4629, 5.0175



9.1525, 14.4629, 25.6813



16.8792, 14.4629, 35.9722

Rectangle

The Rectangle color scheme consists of four colors that form a rectangle on the color wheel.



19.6667, 14.4629, 8.7763



14.9011, 14.4629, 4.1934



9.1525, 14.4629, 25.6813



12.6532, 14.4629, 39.3202

Sweetspot

The Sweet Spot groups the original color and five complimentary colors.



19.6671, 14.4637, 8.7766



52.7282, 51.0332, 50.2129



24.2783, 15.7262, 34.8532



11.2689, 10.7826, 10.4509



78.6606, 82.7571, 90.1225



14.0027, 14.7319, 16.0430

Same Dimension

The Same Dimension uses a secret algorithm to generate beautiful new colors.



19.6671, 14.4637, 8.7766



32.3817, 21.3602, 9.4581



23.9641, 23.0577, 10.2089



7.1050, 7.1483, 7.3854



11.8296, 6.2331, 0.5796



0.2578, 0.1494, 0.0153

Inverse Universe

The Inverse Universe completely reimagines the original color for something new.



22.1589, 29.0530, 39.5618



37.3800, 50.7422, 71.5764



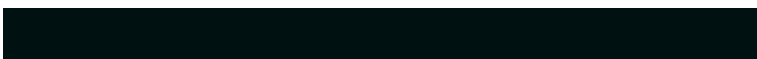
16.0242, 16.7837, 37.5169



7.2411, 7.9411, 9.0542



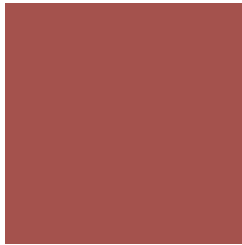
14.0821, 19.9436, 30.0371



0.3057, 0.4386, 0.6344

Previews

White Background



This preview shows how the XYZ color 19.6667, 14.4629, 8.7763 looks on a white background.

Color Contrast Check

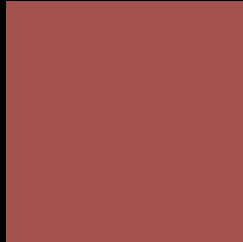
Large Text (above 18pt) WCAG AA ✓ Pass

Any Text WCAG AA ✓ Pass

Large Text (above 18pt) WCAG AAA ✓ Pass

Any Text WCAG AAA × Fail

Black Background



This preview shows how the XYZ color 19.6667, 14.4629, 8.7763 looks on a black background.

Color Contrast Check

Large Text (above 18pt) WCAG AA ✓ Pass

Any Text WCAG AA × Fail

Large Text (above 18pt) WCAG AAA × Fail

Any Text WCAG AAA × Fail

If you want to check with other color combinations, try the [Color Contrast Checker](#).

XYZ 19.6667, 14.4629, 8.7763

Background



This preview shows how black text looks on a background with the XYZ color 19.6667, 14.4629, 8.7763.



This preview shows how white text looks on a background with the XYZ color 19.6667, 14.4629,

Color Blindness Simulation

Color vision deficiency is a very complex topic, and I could not describe the different causes any better than Wikipedia does, so if you want to learn more, you should check out their [article about color blindness](#).

Dichromacy



Original Color

19.6667, 14.4629, 8.7763

Protanopia

13.8292, 14.7307, 11.3469

Deuteranopia

14.8561, 14.5730, 8.3332



Tritanopia

20.1392, 14.5561, 10.5523

Trichromacy



Original Color

19.6667, 14.4629, 8.7763

Protanomaly

15.4836, 14.2810, 10.3279

Deuteranomaly

16.3127, 14.3416, 8.3870

Tritanomaly

20.0208, 14.5087, 9.9289

Monochromacy



Original Color

19.6667, 14.4629, 8.7763

Achromatopsia

13.6994, 14.4128, 15.6956

Achromatomaly

15.0926, 13.8876, 12.7116

CSS Examples

Text

The CSS property to change the color of the text to XYZ 19.6667, 14.4629, 8.7763 is called "color". The color property can be set on classes, ids or directly on the HTML element.

This example shows how text in the color `rgb(164, 82, 77)` looks like.

```
.text, #text, p{  
    color:rgb(164, 82, 77)  
}
```

If you want to add a text shadow in that color use the text-shadow property, you can generate a text shadow directly with our [CSS Text Shadow Generator](#).

Here you see how black text with a 4 pixel rgb(164, 82, 77) colored shadow looks like.

```
.shadow{ text-shadow: 4px 4px 2px rgb(164, 82, 77) }
```

Border

The CSS property to change the border of an element to XYZ 19.6667, 14.4629, 8.7763 is called "border". The border property can be set on classes, ids or directly on the HTML element.

This example shows the color as border, it can be applied via the CSS property "border" or "border-color".

```
.border, #border, table{ border:4px solid rgb(164, 82, 77) }
```


If only the border color should be changed use the property `border-color`.

```
.border{ border-color:rgb(164, 82, 77) }
```

If you want to add a box shadow in that color use:

Here you see how a box with a 4 pixel `rgb(164, 82, 77)` colored shadow looks like.

```
.boxshadow{ -moz-box-shadow:4px 4px 4px  
4px rgb(164, 82, 77); -webkit-box-  
shadow:4px 4px 4px 4px rgb(164, 82, 77);  
box-shadow:4px 4px 4px 4px rgb(164, 82,  
77) }
```

Background

The CSS property to change the background color of an element to XYZ 19.6667, 14.4629, 8.7763 is called "background". The background property can be set on classes, ids or directly on the HTML element.

```
.background, #background, body{  
background: rgb(164, 82, 77) }
```

If only the background color should be changed can be used:

```
.background{ background-color: rgb(164, 82,  
77) }
```

This example shows the color as background, it is applied via the CSS property "background".

To optimize and compress your CSS code, you can use our [online CSS compressor and optimizer](#) based on csstidy. If you want to create a linear or radial gradient as background or border, check our [CSS Gradient Generator](#).

Hey! You found this booklet interesting? Support Converting Colors with the new Membership Option!

The pro membership hides all ads, plus gives you double the colors in the color bucket, and more awesome pro features!

[Learn more, Memberships starting at \\$2.50/m!](#)

**Follow me
on Twitter!**

@ConvertingColor