

Converting Colors

XYZ(19.7915, 17.8805, 11.2503)

Have a look what the booklet for
XYZ(19.7915, 17.8805, 11.2503)
contains.

XYZ(19.6999, 17.7666, 11.1951)	3
<i>Conversions</i>	4
<i>Details</i>	6
<i>Harmonies</i>	12
<i>Previews</i>	24
<i>Color Blindness Simulation</i>	28
<i>CSS Examples</i>	31

Color

**XYZ(19.6999, 17.7666,
11.1951)**

Conversions

Conversions Part 1

Format	Color
Hex	976B56
RGB	151, 107, 86
RGB Percent	59%, 42%, 34%
CMY	0.4078, 0.5804, 0.6627
CMYK	0.00, 0.29, 0.43, 0.41
HSL	19°, 27%, 46%
HSV	19°, 43%, 59%
XYZ	19.6999, 17.7666, 11.1951
YIQ	117.7620, 32.9650, 2.7970

Conversions

Conversions Part 2

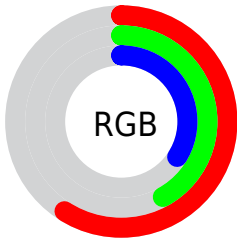
Format	Color
R_{YB}	151, 117, 86
Decimal	9923414
CIE Lab	49.21, 14.81, 18.74
CIE LCh	49, 23.887, 51.670
Yxy	17.7666, 0.4048, 0.3651
Android (android.graphics.Color)	4288113494 (0xFF976B56)
YUV	117.7620, -15.6587, 29.1497
Hunter-Lab	42.1504, 9.6625, 13.7580

Details

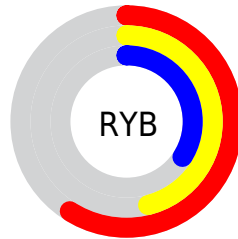
The XYZ color **19.6999, 17.7666, 11.1951** is a dark color, and the websafe version is hex **996666**. A complement of this color would be **17.4059, 20.1772, 32.2553**, and the grayscale version is **17.1860, 18.0811, 19.6903**.

A 20% lighter version of the original color is **42.5742, 39.8392, 28.7384**, and **7.0012, 5.8847, 2.8647** is the 20% darker color. If you saturate the color by 10%, you get **18.1513, 15.5424, 7.9879**, and if you desaturate by 10%, it is **21.5039, 20.2959, 15.1220**.

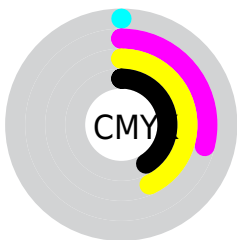
Distribution



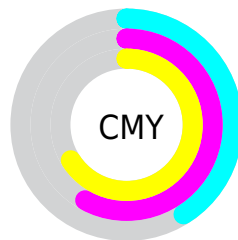
- Red (59%)
- Green (42%)
- Blue (34%)



- Red (59%)
- Yellow (46%)
- Blue (34%)



- Cyan (0%)
- Magenta (29%)
- Yellow (43%)
- Black (41%)



- Cyan (41%)
- Magenta (58%)
- Yellow (66%)

Brightness & Saturation Gradients

These gradients show how the XYZ color 19.6999, 17.7666, 11.1951 changes by changing the brightness by 10 percent. The first figure shows a shift by +10% for each color and the second figure -10%.

Similar to the brightness gradients but the following saturation gradients show a change of the XYZ color 19.6999, 17.7666, 11.1951 by changing the saturation by 10% instead.

■ 19.6999, 17.7666,
11.1951

■ 19.6999, 17.7666,
11.1951

243.1505,
239.5522, 209.7865

■ 12.2841, 10.7825,
6.0824

■ 42.4213, 39.6392,
28.6625

■ 7.0110, 5.9208,
2.8256

■ 58.4575, 55.2966,
41.8543

■ 3.5154, 2.7970,
1.0063

■ 78.0980, 74.6138,
58.5762

■ 1.4318, 1.0267,
0.0000

■ 101.7080, 97.9753,
79.2468

■ 0.2787, 0.0000,
0.0000

■ 129.6528,
125.7655, 104.2846

■ 0.0000, 0.0000,
0.0000

162.2980,

158.3688, 134.1081

200.0088,
196.1696, 169.1359

■ 19.6999, 17.7666,
11.1951

■ 19.6999, 17.7666,
11.1951

■ 18.1513, 15.5424,
7.9879

■ 21.5039, 20.2959,
15.1220

■ 16.8443, 13.6087,
5.4549

■ 23.5736, 23.1390,
19.8082

■ 15.7656, 11.9535,
3.5469

■ 25.9203, 26.3075,
25.2915

■ 14.8998, 10.5627,
2.2076

■ 28.5542, 29.8115,
31.6072

■ 14.2294, 9.4210,
1.3701

■ 31.4850, 33.6607,
38.7880

■ 13.8521, 8.7586,
0.9605

■ 34.7219, 37.8644,
46.8652

■ 38.2736, 42.4315,
55.8684

■ 42.1487, 47.3707,
65.8259

■ 46.3552, 52.6903,
76.7646

Harmonies

Analogous

The Analogous color harmony consists of three colors that are next to each other on the color wheel.



21.2119, 17.7666, 15.1398



19.6999, 17.7666, 11.1951



17.5181, 17.7666, 9.5299

Triad

The Triadic color harmony groups three colors that are evenly spaced from another and form a triangle on the color wheel.



19.6999, 17.7666, 11.1951



12.9750, 17.7666, 17.6129



18.5268, 17.7666, 33.2146

Complementary

The Complementary color scheme is a pair of colors which are on the opposite of each other on the color wheel.



19.6999, 17.7666, 11.1951



17.4059, 20.1772, 32.2553

Split Complementary

Split-complementary colors differ from the complementary color scheme. The scheme consists of three colors, the original color and two neighbors of the complement color.



16.2705, 17.7666, 34.2889



19.6999, 17.7666, 11.1951



13.1933, 17.7666, 24.2642

Square

The Square scheme is like the rectangle color scheme, but the four colors are evenly spaced on the color wheel.



19.6999, 17.7666, 11.1951



13.7295, 17.7666, 12.6612



14.3548, 17.7666, 30.7185



20.4940, 17.7666, 28.0436

Rectangle

The Rectangle color scheme consists of four colors that form a rectangle on the color wheel.



19.6999, 17.7666, 11.1951



16.0307, 17.7666, 9.6080



14.3548, 17.7666, 30.7185



17.7725, 17.7666, 34.1064

Sweetspot

The Sweet Spot groups the original color and five complimentary colors.



19.7003, 17.7675, 11.1955



46.3247, 46.9857, 45.0680



20.1476, 14.8579, 23.0721



10.3229, 10.4025, 9.7568



72.9764, 76.7769, 83.6100



11.9732, 12.5967, 13.7178

Same Dimension

The Same Dimension uses a secret algorithm to generate beautiful new colors.



19.7003, 17.7675, 11.1955



32.5081, 27.8363, 14.3077



23.6869, 25.7406, 12.5243



6.3637, 6.5324, 6.5313



11.8080, 7.4984, 0.8250



0.2070, 0.1731, 0.0225

Inverse Universe

The Inverse Universe completely reimagines the original color for something new.



17.4059, 20.1772, 32.2553



27.8060, 32.7158, 57.2829



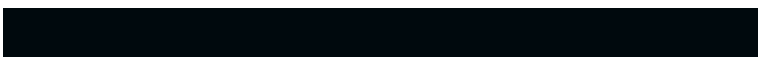
13.7837, 12.9328, 31.0479



6.2162, 6.6898, 7.8926



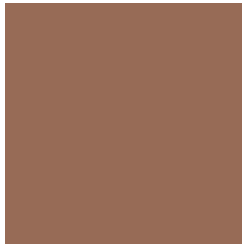
8.8381, 10.0728, 26.3861



0.1647, 0.2158, 0.4053

Previews

White Background



This preview shows how the XYZ color 19.6999, 17.7666, 11.1951 looks on a white background.

Color Contrast Check

Large Text (above 18pt) WCAG AA ✓ Pass

Any Text WCAG AA ✓ Pass

Large Text (above 18pt) WCAG AAA ✓ Pass

Any Text WCAG AAA × Fail

Black Background



This preview shows how the XYZ color 19.6999, 17.7666, 11.1951 looks on a black background.

Color Contrast Check

Large Text (above 18pt) WCAG AA ✓ Pass

Any Text WCAG AA ✓ Pass

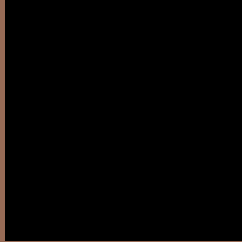
Large Text (above 18pt) WCAG AAA ✓ Pass

Any Text WCAG AAA × Fail

If you want to check with other color combinations, try the [Color Contrast Checker](#).

XYZ 19.6999, 17.7666, 11.1951

Background



This preview shows how black text looks on a background with the XYZ color 19.6999, 17.7666, 11.1951.



This preview shows how white text looks on a background with the XYZ color 19.6999, 17.7666,

Color Blindness Simulation

Color vision deficiency is a very complex topic, and I could not describe the different causes any better than Wikipedia does, so if you want to learn more, you should check out their [article about color blindness](#).

Dichromacy



Original Color

19.6999, 17.7666, 11.1951

Protanopia

16.7071, 17.8379, 12.4600

Deuteranopia

18.0813, 17.7332, 11.0642



Tritanopia

20.9564, 17.8206, 17.3741

Trichromacy



Original Color

19.6999, 17.7666, 11.1951

Protanomaly

17.5398, 17.5999, 11.9239

Deuteranomaly

18.5433, 17.6474, 11.0233

Tritanomaly

20.3987, 17.7379, 14.9190

Monochromacy



Original Color

19.6999, 17.7666, 11.1951

Achromatopsia

17.2197, 18.1164, 19.7288

Achromatomaly

17.8248, 17.8211, 16.1360

CSS Examples

Text

The CSS property to change the color of the text to XYZ 19.6999, 17.7666, 11.1951 is called "color". The color property can be set on classes, ids or directly on the HTML element.

This example shows how text in the color `rgb(151, 107, 86)` looks like.

```
.text, #text, p{  
    color:rgb(151, 107, 86)  
}
```

If you want to add a text shadow in that color use the text-shadow property, you can generate a text shadow directly with our [CSS Text Shadow Generator](#).

Here you see how black text with a 4 pixel rgb(151, 107, 86) colored shadow looks like.

```
.shadow{ text-shadow: 4px 4px 2px rgb(151, 107, 86) }
```

Border

The CSS property to change the border of an element to XYZ 19.6999, 17.7666, 11.1951 is called "border". The border property can be set on classes, ids or directly on the HTML element.

This example shows the color as border, it can be applied via the CSS property "border" or "border-color".

```
.border, #border, table{ border:4px solid rgb(151, 107, 86) }
```


If only the border color should be changed use the property border-color.

```
.border{ border-color:rgb(151, 107, 86) }
```

If you want to add a box shadow in that color use:

Here you see how a box with a 4 pixel rgb(151, 107, 86) colored shadow looks like.

```
.boxshadow{ -moz-box-shadow:4px 4px 4px  
4px rgb(151, 107, 86); -webkit-box-  
shadow:4px 4px 4px 4px rgb(151, 107, 86);  
box-shadow:4px 4px 4px 4px rgb(151, 107,  
86) }
```

Background

The CSS property to change the background color of an element to XYZ 19.6999, 17.7666, 11.1951 is called "background". The background property can be set on classes, ids or directly on the HTML element.

```
.background, #background, body{  
background: rgb(151, 107, 86) }
```

If only the background color should be changed can be used:

```
.background{ background-color: rgb(151,  
107, 86) }
```

This example shows the color as background, it is applied via the CSS property "background".

To optimize and compress your CSS code, you can use our [online CSS compressor and optimizer](#) based on csstidy. If you want to create a linear or radial gradient as background or border, check our [CSS Gradient Generator](#).

Hey! You found this booklet interesting? Support Converting Colors with the new Membership Option!

The pro membership hides all ads, plus gives you double the colors in the color bucket, and more awesome pro features!

[Learn more, Memberships starting at \\$2.50/m!](#)

**Follow me
on Twitter!**

@ConvertingColor