

Converting Colors

XYZ(19.8706, 17.2335, 20.8157)

Have a look what the booklet for
XYZ(19.8706, 17.2335, 20.8157)
contains.

XYZ(19.7909, 17.1454, 20.6787)	3
<i>Conversions</i>	4
<i>Details</i>	6
<i>Harmonies</i>	12
<i>Previews</i>	24
<i>Color Blindness Simulation</i>	28
<i>CSS Examples</i>	31

Color

**XYZ(19.7909, 17.1454,
20.6787)**

Conversions

Conversions Part 1

Format	Color
Hex	8F687A
RGB	143, 104, 122
RGB Percent	56%, 41%, 48%
CMY	0.4392, 0.5921, 0.5216
CMYK	0.00, 0.27, 0.15, 0.44
HSL	332°, 16%, 48%
HSV	332°, 27%, 56%
XYZ	19.7909, 17.1454, 20.6787
YIQ	117.7130, 17.4660, 13.8660

Conversions

Conversions Part 2

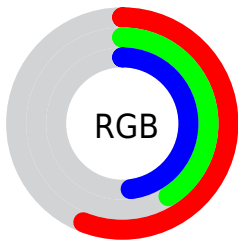
Format	Color
R_{YB}	143, 104, 122
Decimal	9398394
CIE Lab	48.44, 18.58, -3.85
CIE LCh	48, 18.980, 348.287
Yxy	17.1454, 0.3435, 0.2976
Android (android.graphics.Color)	4287588474 (0xFF8F687A)
YUV	117.7130, 2.1135, 22.1767
Hunter-Lab	41.4070, 12.8536, -0.6246

Details

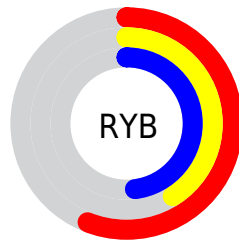
The XYZ color **19.7909, 17.1454, 20.6787** is a dark color, and the websafe version is hex **996666**. A complement of this color would be **19.2338, 24.0692, 23.0352**, and the grayscale version is **17.1204, 18.0120, 19.6150**.

A 20% lighter version of the original color is **42.3873, 38.3690, 45.2163**, and **7.0304, 5.5847, 7.0107** is the 20% darker color. If you saturate the color by 10%, you get **18.0134, 14.3238, 17.8247**, and if you desaturate by 10%, it is **21.8513, 20.4719, 23.8139**.

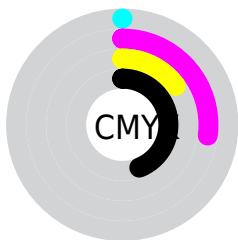
Distribution



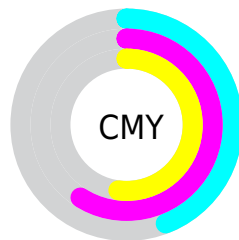
- Red (56%)
- Green (41%)
- Blue (48%)



- Red (56%)
- Yellow (41%)
- Blue (48%)



- Cyan (0%)
- Magenta (27%)
- Yellow (15%)
- Black (44%)



- Cyan (44%)
- Magenta (59%)
- Yellow (52%)

Brightness & Saturation Gradients

These gradients show how the XYZ color 19.7909, 17.1454, 20.6787 changes by changing the brightness by 10 percent. The first figure shows a shift by +10% for each color and the second figure -10%.

Similar to the brightness gradients but the following saturation gradients show a change of the XYZ color 19.7909, 17.1454, 20.6787 by changing the saturation by 10% instead.

■ 19.7909, 17.1454,
20.6787

■ 19.7909, 17.1454,
20.6787

243.6361,
236.0089, 268.2907

■ 12.3505, 10.3382,
12.7004

■ 42.5730, 38.5756,
45.4260

■ 7.0568, 5.6238,
7.0943

■ 58.6453, 53.9674,
63.0321

■ 3.5443, 2.6177,
3.4418

■ 78.3258, 72.9895,
84.6845

■ 1.4477, 0.9356,
1.3244

■ 101.9796, 96.0264,
110.8018

■ 0.2898, 0.0000,
0.0817

129.9722,
123.4623, 141.8026

■ 0.0000, 0.0000,
0.0000

162.6689,

155.6818, 178.1053

200.4351,
193.0692, 220.1285

■ 19.7909, 17.1454,
20.6787

■ 19.7909, 17.1454,
20.6787

■ 18.0134, 14.3238,
17.8247

■ 21.8513, 20.4719,
23.8139

■ 16.5042, 11.9799,
15.2423

■ 24.2054, 24.3241,
27.2376

■ 15.2494, 10.0871,
12.9224

■ 26.8653, 28.7247,
30.9580

■ 14.2334, 8.6158,
10.8554

■ 29.8418, 33.6941,
34.9825

■ 13.4386, 7.5323,
9.0304

■ 33.1454, 39.2519,
39.3185

■ 12.8449, 6.7979,
7.4358

■ 36.7857, 45.4165,
43.9730

■ 12.4166, 6.3430,
6.0543

■ 40.7724, 52.2057,
48.9526

■ 12.3111, 6.2330,
5.7078

■ 45.1145, 59.6365,
54.2639

■ 49.8207, 67.7252,
59.9132

Harmonies

Analogous

The Analogous color harmony consists of three colors that are next to each other on the color wheel.



18.9192, 17.1454, 25.7853



19.7909, 17.1454, 20.6787



19.6782, 17.1454, 15.8245

Triad

The Triadic color harmony groups three colors that are evenly spaced from another and form a triangle on the color wheel.



19.7909, 17.1454, 20.6787



15.2703, 17.1454, 10.9783



14.1729, 17.1454, 26.7596

Complementary

The Complementary color scheme is a pair of colors which are on the opposite of each other on the color wheel.



19.7909, 17.1454, 20.6787



19.2338, 24.0692, 23.0352

Split Complementary

Split-complementary colors differ from the complementary color scheme. The scheme consists of three colors, the original color and two neighbors of the complement color.



13.3257, 17.1454, 21.8342



19.7909, 17.1454, 20.6787



13.9275, 17.1454, 12.9987

Square

The Square scheme is like the rectangle color scheme, but the four colors are evenly spaced on the color wheel.



19.7909, 17.1454, 20.6787



16.9838, 17.1454, 10.7802



13.2392, 17.1454, 16.7929



15.6274, 17.1454, 29.6906

Rectangle

The Rectangle color scheme consists of four colors that form a rectangle on the color wheel.



19.7909, 17.1454, 20.6787



19.0614, 17.1454, 13.3459



13.2392, 17.1454, 16.7929



13.8123, 17.1454, 25.2458

Sweetspot

The Sweet Spot groups the original color and five complimentary colors.



19.7914, 17.1462, 20.6791



42.9469, 42.9009, 48.2055



18.3372, 16.2296, 28.1531



9.7084, 9.6077, 10.8534



69.3244, 72.9347, 79.4259



10.7221, 11.2805, 12.2844

Same Dimension

The Same Dimension uses a secret algorithm to generate beautiful new colors.



19.7914, 17.1462, 20.6791



33.3400, 27.3567, 33.6907



18.9092, 17.0043, 15.3831



5.5059, 5.4629, 6.1622



10.8956, 5.5153, 5.1015



0.1151, 0.0571, 0.1063

Inverse Universe

The Inverse Universe completely reimagines the original color for something new.



19.7914, 17.1462, 20.6791



33.3400, 27.3567, 33.6907



20.2959, 24.1836, 29.5851



5.5059, 5.4629, 6.1622



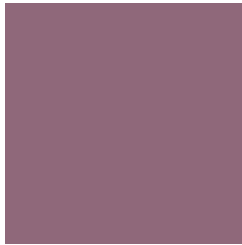
10.8956, 5.5153, 5.1015



0.1151, 0.0571, 0.1063

Previews

White Background



This preview shows how the XYZ color 19.7909, 17.1454, 20.6787 looks on a white background.

Color Contrast Check

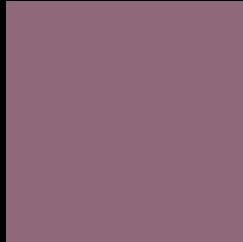
Large Text (above 18pt) WCAG AA ✓ Pass

Any Text WCAG AA ✓ Pass

Large Text (above 18pt) WCAG AAA ✓ Pass

Any Text WCAG AAA × Fail

Black Background



This preview shows how the XYZ color 19.7909, 17.1454, 20.6787 looks on a black background.

Color Contrast Check

Large Text (above 18pt) WCAG AA ✓ Pass

Any Text WCAG AA × Fail

Large Text (above 18pt) WCAG AAA × Fail

Any Text WCAG AAA × Fail

If you want to check with other color combinations, try the [Color Contrast Checker](#).

XYZ 19.7909, 17.1454, 20.6787

Background



This preview shows how black text looks on a background with the XYZ color 19.7909, 17.1454, 20.6787.



This preview shows how white text looks on a background with the XYZ color 19.7909, 17.1454,

Color Blindness Simulation

Color vision deficiency is a very complex topic, and I could not describe the different causes any better than Wikipedia does, so if you want to learn more, you should check out their [article about color blindness](#).

Dichromacy



Original Color

19.7909, 17.1454, 20.6787

Protanopia

16.7236, 17.1039, 22.8420

Deuteranopia

17.5575, 17.2539, 20.4941



Tritanopia

19.2442, 17.0688, 18.1999

Trichromacy



Original Color

19.7909, 17.1454, 20.6787

Protanomaly

17.6540, 16.9433, 22.0786

Deuteranomaly

18.2799, 17.1430, 20.4346

Tritanomaly

19.4178, 17.1383, 19.1142

Monochromacy



Original Color

19.7909, 17.1454, 20.6787

Achromatopsia

17.2197, 18.1164, 19.7288

Achromatomaly

17.9873, 17.6542, 19.9123

CSS Examples

Text

The CSS property to change the color of the text to XYZ 19.7909, 17.1454, 20.6787 is called "color". The color property can be set on classes, ids or directly on the HTML element.

This example shows how text in the color `rgb(143, 104, 122)` looks like.

```
.text, #text, p{  
    color:rgb(143, 104, 122)  
}
```

If you want to add a text shadow in that color use the text-shadow property, you can generate a text shadow directly with our [CSS Text Shadow Generator](#).

Here you see how black text with a 4 pixel rgb(143, 104, 122) colored shadow looks like.

```
.shadow{ text-shadow: 4px 4px 2px rgb(143, 104, 122) }
```

Border

The CSS property to change the border of an element to XYZ 19.7909, 17.1454, 20.6787 is called "border". The border property can be set on classes, ids or directly on the HTML element.

This example shows the color as border, it can be applied via the CSS property "border" or "border-color".

```
.border, #border, table{ border:4px solid rgb(143, 104, 122) }
```


If only the border color should be changed use the property `border-color`.

```
.border{ border-color:rgb(143, 104, 122) }
```

If you want to add a box shadow in that color use:

Here you see how a box with a 4 pixel `rgb(143, 104, 122)` colored shadow looks like.

```
.boxshadow{ -moz-box-shadow:4px 4px 4px  
4px rgb(143, 104, 122); -webkit-box-  
shadow:4px 4px 4px 4px rgb(143, 104, 122);  
box-shadow:4px 4px 4px 4px rgb(143, 104,  
122) }
```

Background

The CSS property to change the background color of an element to XYZ 19.7909, 17.1454, 20.6787 is called "background". The background property can be set on classes, ids or directly on the HTML element.

```
.background, #background, body{  
background: rgb(143, 104, 122) }
```

If only the background color should be changed can be used:

```
.background{ background-color: rgb(143,  
104, 122) }
```

This example shows the color as background, it is applied via the CSS property "background".

To optimize and compress your CSS code, you can use our [online CSS compressor and optimizer](#) based on csstidy. If you want to create a linear or radial gradient as background or border, check our [CSS Gradient Generator](#).

Hey! You found this booklet interesting? Support Converting Colors with the new Membership Option!

The pro membership hides all ads, plus gives you double the colors in the color bucket, and more awesome pro features!

[Learn more, Memberships starting at \\$2.50/m!](#)

**Follow me
on Twitter!**

@ConvertingColor