

Converting Colors

XYZ(20.0535, 19.1437, 12.0900)

Have a look what the booklet for
XYZ(20.0535, 19.1437, 12.0900)
contains.

XYZ(20.0332, 19.0518, 12.0727)	3
<i>Conversions</i>	4
<i>Details</i>	6
<i>Harmonies</i>	12
<i>Previews</i>	24
<i>Color Blindness Simulation</i>	28
<i>CSS Examples</i>	31

Color

**XYZ(20.0332, 19.0518,
12.0727)**

Conversions

Conversions Part 1

Format	Color
Hex	947259
RGB	148, 114, 89
RGB Percent	58%, 45%, 35%
CMY	0.4196, 0.5529, 0.6510
CMYK	0.00, 0.23, 0.40, 0.42
HSL	25°, 25%, 46%
HSV	25°, 40%, 58%
XYZ	20.0332, 19.0518, 12.0727
YIQ	121.3160, 28.2890, -0.5670

Conversions

Conversions Part 2

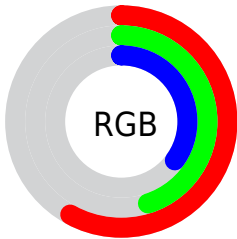
Format	Color
R_{YB}	148, 132, 89
Decimal	9728601
CIE _{Lab}	50.75, 9.85, 19.00
CIE _{LCh}	51, 21.403, 62.588
Yxy	19.0518, 0.3916, 0.3724
Android (android.graphics.Color)	4287918681 (0xFF947259)
YUV	121.3160, -15.9318, 23.4019
Hunter-Lab	43.6484, 5.5411, 14.1548

Details

The XYZ color **20.0332, 19.0518, 12.0727** is a dark color, and the websafe version is hex **996666**. A complement of this color would be **16.5478, 18.4271, 30.7015**, and the grayscale version is **18.3202, 19.2743, 20.9897**.

A 20% lighter version of the original color is **42.9250, 41.8330, 30.2383**, and **7.2081, 6.5576, 3.1713** is the 20% darker color. If you saturate the color by 10%, you get **18.5557, 16.9934, 8.8162**, and if you desaturate by 10%, it is **21.7263, 21.3414, 16.0180**.

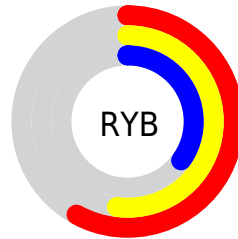
Distribution



Red (58%)

Green (45%)

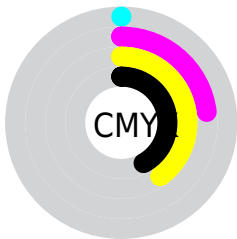
Blue (35%)



Red (58%)

Yellow (52%)

Blue (35%)

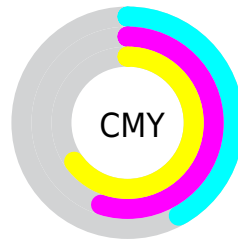


Cyan (0%)

Magenta (23%)

Yellow (40%)

Black (42%)



Cyan (42%)

Magenta (55%)

Yellow (65%)

Brightness & Saturation Gradients

These gradients show how the XYZ color 20.0332, 19.0518, 12.0727 changes by changing the brightness by 10 percent. The first figure shows a shift by +10% for each color and the second figure -10%.

Similar to the brightness gradients but the following saturation gradients show a change of the XYZ color 20.0332, 19.0518, 12.0727 by changing the saturation by 10% instead.

■ 20.0332, 19.0518,
12.0727

■ 20.0332, 19.0518,
12.0727

244.9249,
246.7346, 215.8810

■ 12.5276, 11.7077,
6.6701

■ 42.9764, 41.8216,
30.2938

■ 7.1788, 6.5450,
3.1813

■ 59.1446, 58.0161,
43.9494

■ 3.6215, 3.1792,
1.1880

■ 78.9311, 77.9296,
61.1930

■ 1.4903, 1.2260,
0.0000

■ 102.7012,
101.9463, 82.4432

■ 0.3192, 0.0828,
0.0000

■ 130.8203,
130.4508, 108.1186

■ 0.0000, 0.0000,
0.0000

163.6537,

163.8274, 138.6377

201.5668,
202.4606, 174.4189

■ 20.0332, 19.0518,
12.0727

■ 20.0332, 19.0518,
12.0727

■ 18.5557, 16.9934,
8.8162

■ 21.7263, 21.3414,
16.0180

■ 17.2825, 15.1556,
6.2069

■ 23.6429, 23.8669,
20.6881

■ 16.2030, 13.5309,
4.2003

■ 25.7921, 26.6364,
26.1178

■ 15.3053, 12.1102,
2.7458

■ 28.1820, 29.6565,
32.3394

■ 14.5754, 10.8833,
1.7845

■ 30.8204, 32.9338,
39.3832

■ 13.9823, 9.8333,
1.1668

■ 33.7147, 36.4744,
47.2781

■ 13.9748, 9.8200,
1.1589

■ 36.8719, 40.2844,
56.0513

■ 40.2988, 44.3696,
65.7290

■ 44.0019, 48.7355,
76.3362

Harmonies

Analogous

The Analogous color harmony consists of three colors that are next to each other on the color wheel.



21.7311, 19.0518, 15.1141



20.0332, 19.0518, 12.0727



17.9263, 19.0518, 11.1971

Triad

The Triadic color harmony groups three colors that are evenly spaced from another and form a triangle on the color wheel.



20.0332, 19.0518, 12.0727



14.3636, 19.0518, 21.2711



20.3731, 19.0518, 32.1040

Complementary

The Complementary color scheme is a pair of colors which are on the opposite of each other on the color wheel.



20.0332, 19.0518, 12.0727



16.5478, 18.4271, 30.7015

Split Complementary

Split-complementary colors differ from the complementary color scheme. The scheme consists of three colors, the original color and two neighbors of the complement color.



18.2912, 19.0518, 34.5875



20.0332, 19.0518, 12.0727



14.9121, 19.0518, 27.6230

Square

The Square scheme is like the rectangle color scheme, but the four colors are evenly spaced on the color wheel.



20.0332, 19.0518, 12.0727



14.7523, 19.0518, 15.8588



16.3106, 19.0518, 32.8082



21.9378, 19.0518, 26.5420

Rectangle

The Rectangle color scheme consists of four colors that form a rectangle on the color wheel.



20.0332, 19.0518, 12.0727



16.5999, 19.0518, 11.7879



16.3106, 19.0518, 32.8082



19.7052, 19.0518, 33.3703

Sweetspot

The Sweet Spot groups the original color and five complimentary colors.



20.0337, 19.0527, 12.0731



44.5702, 45.7983, 43.6833



19.3865, 14.8813, 20.7266



10.0727, 10.3242, 9.7133



71.1368, 74.8414, 81.5023



11.3376, 11.9280, 12.9896

Same Dimension

The Same Dimension uses a secret algorithm to generate beautiful new colors.



20.0337, 19.0527, 12.0731



32.9618, 30.2969, 16.0281



23.8509, 26.6871, 13.3455



5.9908, 6.1953, 6.1205



11.9627, 8.4398, 0.9985



0.1746, 0.1597, 0.0216

Inverse Universe

The Inverse Universe completely reimagines the original color for something new.



16.5478, 18.4271, 30.7015



25.9109, 29.0197, 53.6703



13.4606, 12.2528, 29.6724



5.7603, 6.1545, 7.3541



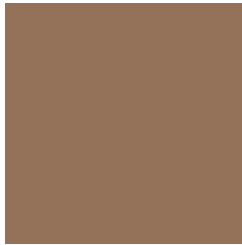
7.3866, 7.4681, 24.9832



0.1197, 0.1499, 0.3155

Previews

White Background



This preview shows how the XYZ color 20.0332, 19.0518, 12.0727 looks on a white background.

Color Contrast Check

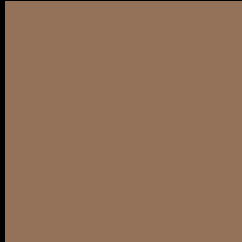
Large Text (above 18pt) WCAG AA ✓ Pass

Any Text WCAG AA × Fail

Large Text (above 18pt) WCAG AAA × Fail

Any Text WCAG AAA × Fail

Black Background



This preview shows how the XYZ color 20.0332, 19.0518, 12.0727 looks on a black background.

Color Contrast Check

Large Text (above 18pt) WCAG AA ✓ Pass

Any Text WCAG AA ✓ Pass

Large Text (above 18pt) WCAG AAA ✓ Pass

Any Text WCAG AAA × Fail

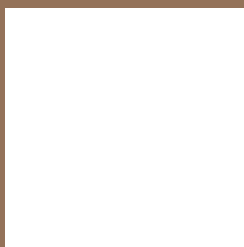
If you want to check with other color combinations, try the [Color Contrast Checker](#).

XYZ 20.0332, 19.0518, 12.0727

Background



This preview shows how black text looks on a background with the XYZ color 20.0332, 19.0518, 12.0727.



This preview shows how white text looks on a background with the XYZ color 20.0332, 19.0518,

Color Blindness Simulation

Color vision deficiency is a very complex topic, and I could not describe the different causes any better than Wikipedia does, so if you want to learn more, you should check out their [article about color blindness](#).

Dichromacy



Original Color

20.0332, 19.0518, 12.0727

Protanopia

17.8224, 19.1146, 12.8754

Deuteranopia

19.3763, 19.0517, 12.1073



Tritanopia

21.6084, 19.0392, 19.6756

Trichromacy



Original Color

20.0332, 19.0518, 12.0727

Protanomaly

18.5201, 18.9464, 12.5784

Deuteranomaly

19.6110, 19.0025, 12.0854

Tritanomaly

20.9160, 18.9144, 16.4584

Monochromacy



Original Color

20.0332, 19.0518, 12.0727

Achromatopsia

18.1737, 19.1202, 20.8219

Achromatomaly

18.5988, 18.8863, 17.1332

CSS Examples

Text

The CSS property to change the color of the text to XYZ 20.0332, 19.0518, 12.0727 is called "color". The color property can be set on classes, ids or directly on the HTML element.

This example shows how text in the color `rgb(148, 114, 89)` looks like.

```
.text, #text, p{  
    color:rgb(148, 114, 89)  
}
```

If you want to add a text shadow in that color use the text-shadow property, you can generate a text shadow directly with our [CSS Text Shadow Generator](#).

Here you see how black text with a 4 pixel rgb(148, 114, 89) colored shadow looks like.

```
.shadow{ text-shadow: 4px 4px 2px rgb(148, 114, 89) }
```

Border

The CSS property to change the border of an element to XYZ 20.0332, 19.0518, 12.0727 is called "border". The border property can be set on classes, ids or directly on the HTML element.

This example shows the color as border, it can be applied via the CSS property "border" or "border-color".

```
.border, #border, table{ border:4px solid rgb(148, 114, 89) }
```


If only the border color should be changed use the property `border-color`.

```
.border{ border-color:rgb(148, 114, 89) }
```

If you want to add a box shadow in that color use:

Here you see how a box with a 4 pixel `rgb(148, 114, 89)` colored shadow looks like.

```
.boxshadow{ -moz-box-shadow:4px 4px 4px  
4px rgb(148, 114, 89); -webkit-box-  
shadow:4px 4px 4px 4px rgb(148, 114, 89);  
box-shadow:4px 4px 4px 4px rgb(148, 114,  
89) }
```

Background

The CSS property to change the background color of an element to XYZ 20.0332, 19.0518, 12.0727 is called "background". The background property can be set on classes, ids or directly on the HTML element.

```
.background, #background, body{  
background: rgb(148, 114, 89) }
```

If only the background color should be changed can be used:

```
.background{ background-color: rgb(148,  
114, 89) }
```

This example shows the color as background, it is applied via the CSS property "background".

To optimize and compress your CSS code, you can use our [online CSS compressor and optimizer](#) based on csstidy. If you want to create a linear or radial gradient as background or border, check our [CSS Gradient Generator](#).

Hey! You found this booklet interesting? Support Converting Colors with the new Membership Option!

The pro membership hides all ads, plus gives you double the colors in the color bucket, and more awesome pro features!

[Learn more, Memberships starting at \\$2.50/m!](#)

**Follow me
on Twitter!**

@ConvertingColor