

Converting Colors

XYZ(20.0862, 18.5483, 12.1951)

Have a look what the booklet for
XYZ(20.0862, 18.5483, 12.1951)
contains.

XYZ(20.1076, 18.5911, 12.2015)	3
<i>Conversions</i>	4
<i>Details</i>	6
<i>Harmonies</i>	12
<i>Previews</i>	24
<i>Color Blindness Simulation</i>	28
<i>CSS Examples</i>	31

Color

**XYZ(20.1076, 18.5911,
12.2015)**

Conversions

Conversions Part 1

Format	Color
Hex	966F5A
RGB	150, 111, 90
RGB Percent	59%, 44%, 35%
CMY	0.4118, 0.5647, 0.6471
CMYK	0.00, 0.26, 0.40, 0.41
HSL	21°, 25%, 47%
HSV	21°, 40%, 59%
XYZ	20.1076, 18.5911, 12.2015
YIQ	120.2670, 29.9850, 1.7370

Conversions

Conversions Part 2

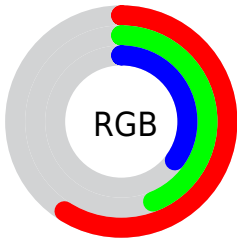
Format	Color
R_{YB}	150, 122, 90
Decimal	9858906
CIE Lab	50.21, 12.56, 17.72
CIE LCh	50, 21.723, 54.678
Yxy	18.5911, 0.3950, 0.3652
Android (android.graphics.Color)	4288048986 (0xFF966F5A)
YUV	120.2670, -14.9216, 26.0758
Hunter-Lab	43.1174, 7.7872, 13.4041

Details

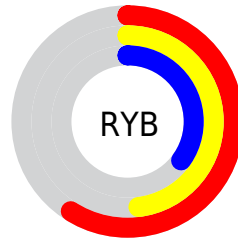
The XYZ color **20.1076, 18.5911, 12.2015** is a dark color, and the websafe version is hex **996666**. A complement of this color would be **17.5714, 20.0755, 31.8030**, and the grayscale version is **17.9781, 18.9144, 20.5977**.

A 20% lighter version of the original color is **43.0077, 41.0670, 30.4709**, and **7.1619, 6.2782, 3.2172** is the 20% darker color. If you saturate the color by 10%, you get **18.5262, 16.3490, 8.8360**, and if you desaturate by 10%, it is **21.9350, 21.1188, 16.2851**.

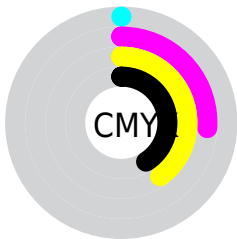
Distribution



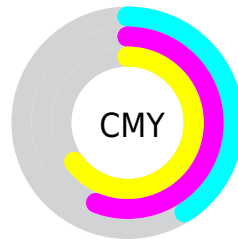
- Red (59%)
- Green (44%)
- Blue (35%)



- Red (59%)
- Yellow (48%)
- Blue (35%)



- Cyan (0%)
- Magenta (26%)
- Yellow (40%)
- Black (41%)



- Cyan (41%)
- Magenta (56%)
- Yellow (65%)

Brightness & Saturation Gradients

These gradients show how the XYZ color 20.1076, 18.5911, 12.2015 changes by changing the brightness by 10 percent. The first figure shows a shift by +10% for each color and the second figure -10%.

Similar to the brightness gradients but the following saturation gradients show a change of the XYZ color 20.1076, 18.5911, 12.2015 by changing the saturation by 10% instead.

■ 20.1076, 18.5911,
12.2015

■ 20.1076, 18.5911,
12.2015

245.3195,
244.1820, 216.7598

■ 12.5820, 11.3752,
6.7569

■ 43.1001, 41.0420,
30.5314

■ 7.2164, 6.3198,
3.2344

■ 59.2977, 57.0458,
44.2538

■ 3.6453, 3.0405,
1.2155

■ 79.1166, 76.7477,
61.5725

■ 1.5035, 1.1529,
0.0000

■ 102.9223,
100.5320, 82.9061

■ 0.3282, 0.0227,
0.0000

■ 131.0801,
128.7832, 108.6730

■ 0.0000, 0.0000,
0.0000

163.9553,

161.8857, 139.2920

201.9133,
200.2238, 175.1814

■ 20.1076, 18.5911,
12.2015

■ 20.1076, 18.5911,
12.2015

■ 18.5262, 16.3490,
8.8360

■ 21.9350, 21.1188,
16.2851

■ 17.1778, 14.3792,
6.1452

■ 24.0175, 23.9394,
21.1245

■ 16.0503, 12.6714,
4.0826

■ 26.3658, 27.0631,
26.7561

■ 15.1299, 11.2135,
2.5953

■ 28.9893, 30.4990,
33.2136

■ 14.4006, 9.9919,
1.6216

■ 31.8968, 34.2557,
40.5286

■ 13.8285, 8.9857,
1.0056

■ 35.0970, 38.3413,
48.7314

■ 13.8285, 8.9857,
1.0056

■ 38.5980, 42.7640,
57.8503

■ 42.4077, 47.5313,
67.9128

■ 46.5336, 52.6507,
78.9449

Harmonies

Analogous

The Analogous color harmony consists of three colors that are next to each other on the color wheel.



21.5965, 18.5911, 15.7906



20.1076, 18.5911, 12.2015



18.0472, 18.5911, 10.7782

Triad

The Triadic color harmony groups three colors that are evenly spaced from another and form a triangle on the color wheel.



20.1076, 18.5911, 12.2015



13.9492, 18.5911, 19.1894



19.4092, 18.5911, 32.6646

Complementary

The Complementary color scheme is a pair of colors which are on the opposite of each other on the color wheel.



20.1076, 18.5911, 12.2015



17.5714, 20.0755, 31.8030

Split Complementary

Split-complementary colors differ from the complementary color scheme. The scheme consists of three colors, the original color and two neighbors of the complement color.



17.2986, 18.5911, 34.0677



20.1076, 18.5911, 12.2015



14.2513, 18.5911, 25.4612

Square

The Square scheme is like the rectangle color scheme, but the four colors are evenly spaced on the color wheel.



20.1076, 18.5911, 12.2015



14.5781, 18.5911, 14.2689



15.4383, 18.5911, 31.2119



21.1715, 18.5911, 27.6866

Rectangle

The Rectangle color scheme consists of four colors that form a rectangle on the color wheel.



20.1076, 18.5911, 12.2015



16.6674, 18.5911, 10.9947



15.4383, 18.5911, 31.2119



18.7126, 18.5911, 33.6067

Sweetspot

The Sweet Spot groups the original color and five complimentary colors.



20.1081, 18.5920, 12.2019



45.5611, 46.4798, 44.8708



20.1964, 15.3815, 22.6735



9.9899, 10.1587, 9.6857



71.1368, 74.8414, 81.5023



11.3376, 11.9280, 12.9896

Same Dimension

The Same Dimension uses a secret algorithm to generate beautiful new colors.



20.1081, 18.5920, 12.2019



32.9689, 29.2463, 16.1619



23.9481, 26.2721, 13.4819



5.9570, 6.1277, 6.1093



11.4969, 7.5082, 0.8433



0.1664, 0.1433, 0.0189

Inverse Universe

The Inverse Universe completely reimagines the original color for something new.



17.5714, 20.0755, 31.8030



27.8432, 32.2123, 55.6714



14.1835, 13.2996, 30.6737



5.7950, 6.2239, 7.3656



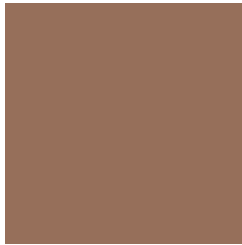
8.1797, 9.0541, 25.2475



0.1278, 0.1663, 0.3183

Previews

White Background



This preview shows how the XYZ color 20.1076, 18.5911, 12.2015 looks on a white background.

Color Contrast Check

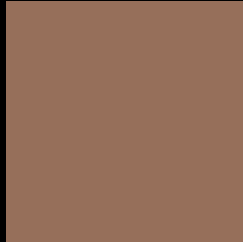
Large Text (above 18pt) WCAG AA ✓ Pass

Any Text WCAG AA × Fail

Large Text (above 18pt) WCAG AAA × Fail

Any Text WCAG AAA × Fail

Black Background



This preview shows how the XYZ color 20.1076, 18.5911, 12.2015 looks on a black background.

Color Contrast Check

Large Text (above 18pt) WCAG AA ✓ Pass

Any Text WCAG AA ✓ Pass

Large Text (above 18pt) WCAG AAA ✓ Pass

Any Text WCAG AAA × Fail

If you want to check with other color combinations, try the [Color Contrast Checker](#).

XYZ 20.1076, 18.5911, 12.2015

Background



This preview shows how black text looks on a background with the XYZ color 20.1076, 18.5911, 12.2015.



This preview shows how white text looks on a background with the XYZ color 20.1076, 18.5911,

Color Blindness Simulation

Color vision deficiency is a very complex topic, and I could not describe the different causes any better than Wikipedia does, so if you want to learn more, you should check out their [article about color blindness](#).

Dichromacy



Original Color

20.1076, 18.5911, 12.2015

Protanopia

17.6389, 18.8303, 13.2946

Deuteranopia

18.9184, 18.6455, 12.0530



Tritanopia

21.3590, 18.4517, 18.9588

Trichromacy



Original Color

20.1076, 18.5911, 12.2015

Protanomaly

18.4904, 18.7471, 12.9999

Deuteranomaly

19.3221, 18.6852, 12.0394

Tritanomaly

20.7789, 18.3660, 16.3597

Monochromacy



Original Color

20.1076, 18.5911, 12.2015

Achromatopsia

17.8524, 18.7821, 20.4537

Achromatomaly

18.4817, 18.6520, 17.0941

CSS Examples

Text

The CSS property to change the color of the text to XYZ 20.1076, 18.5911, 12.2015 is called "color". The color property can be set on classes, ids or directly on the HTML element.

This example shows how text in the color `rgb(150, 111, 90)` looks like.

```
.text, #text, p{  
    color:rgb(150, 111, 90)  
}
```

If you want to add a text shadow in that color use the text-shadow property, you can generate a text shadow directly with our [CSS Text Shadow Generator](#).

Here you see how black text with a 4 pixel rgb(150, 111, 90) colored shadow looks like.

```
.shadow{ text-shadow: 4px 4px 2px rgb(150, 111, 90) }
```

Border

The CSS property to change the border of an element to XYZ 20.1076, 18.5911, 12.2015 is called "border". The border property can be set on classes, ids or directly on the HTML element.

This example shows the color as border, it can be applied via the CSS property "border" or "border-color".

```
.border, #border, table{ border:4px solid rgb(150, 111, 90) }
```


If only the border color should be changed use the property `border-color`.

```
.border{ border-color:rgb(150, 111, 90) }
```

If you want to add a box shadow in that color use:

Here you see how a box with a 4 pixel `rgb(150, 111, 90)` colored shadow looks like.

```
.boxshadow{ -moz-box-shadow:4px 4px 4px  
4px rgb(150, 111, 90); -webkit-box-  
shadow:4px 4px 4px 4px rgb(150, 111, 90);  
box-shadow:4px 4px 4px 4px rgb(150, 111,  
90) }
```

Background

The CSS property to change the background color of an element to XYZ 20.1076, 18.5911, 12.2015 is called "background". The background property can be set on classes, ids or directly on the HTML element.

```
.background, #background, body{  
background: rgb(150, 111, 90) }
```

If only the background color should be changed can be used:

```
.background{ background-color: rgb(150,  
111, 90) }
```

This example shows the color as background, it is applied via the CSS property "background".

To optimize and compress your CSS code, you can use our [online CSS compressor and optimizer](#) based on csstidy. If you want to create a linear or radial gradient as background or border, check our [CSS Gradient Generator](#).

Hey! You found this booklet interesting? Support Converting Colors with the new Membership Option!

The pro membership hides all ads, plus gives you double the colors in the color bucket, and more awesome pro features!

[Learn more, Memberships starting at \\$2.50/m!](#)

**Follow me
on Twitter!**

@ConvertingColor