

Converting Colors

XYZ(20.0890, 17.6475, 7.8532)

Have a look what the booklet for
XYZ(20.0890, 17.6475, 7.8532)
contains.

XYZ(20.0943, 17.5871, 7.8044)	3
<i>Conversions</i>	4
<i>Details</i>	6
<i>Harmonies</i>	12
<i>Previews</i>	24
<i>Color Blindness Simulation</i>	28
<i>CSS Examples</i>	31

Color

**XYZ(20.0943, 17.5871,
7.8044)**

Conversions

Conversions Part 1

Format	Color
Hex	9E6844
RGB	158, 104, 68
RGB Percent	62%, 41%, 27%
CMY	0.3804, 0.5921, 0.7333
CMYK	0.00, 0.34, 0.57, 0.38
HSL	24°, 40%, 44%
HSV	24°, 57%, 62%
XYZ	20.0943, 17.5871, 7.8044
YIQ	116.0420, 43.7400, 0.2520

Conversions

Conversions Part 2

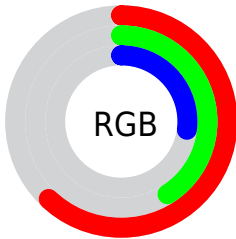
Format	Color
R_{YB}	158, 128, 68
Decimal	10381380
CIE _{Lab}	48.99, 17.73, 28.98
CIE _{LCh}	49, 33.968, 58.543
Yxy	17.5871, 0.4418, 0.3867
Android (android.graphics.Color)	4288571460 (0xFF9E6844)
YUV	116.0420, -23.6847, 36.7972
Hunter-Lab	41.9370, 12.1394, 18.3221

Details

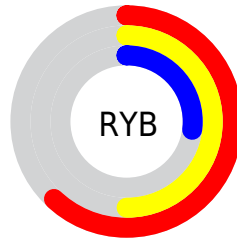
The XYZ color **20.0943, 17.5871, 7.8044** is a dark color, and the websafe version is hex **996633**. A complement of this color would be **15.5147, 17.6159, 34.9302**, and the grayscale version is **16.6747, 17.5431, 19.1044**.

A 20% lighter version of the original color is **42.9566, 39.1741, 22.1269**, and **7.2113, 5.8717, 1.5639** is the 20% darker color. If you saturate the color by 10%, you get **18.7745, 15.6180, 5.2977**, and if you desaturate by 10%, it is **21.6522, 19.8246, 11.0321**.

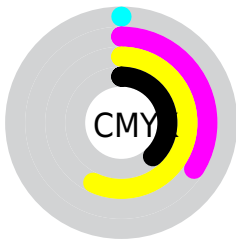
Distribution



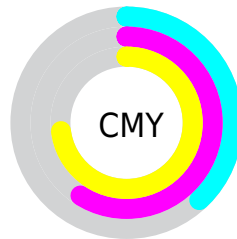
- Red (62%)
- Green (41%)
- Blue (27%)



- Red (62%)
- Yellow (50%)
- Blue (27%)



- Cyan (0%)
- Magenta (34%)
- Yellow (57%)
- Black (38%)



- Cyan (38%)
- Magenta (59%)
- Yellow (73%)

Brightness & Saturation Gradients

These gradients show how the XYZ color 20.0943, 17.5871, 7.8044 changes by changing the brightness by 10 percent. The first figure shows a shift by +10% for each color and the second figure -10%.

Similar to the brightness gradients but the following saturation gradients show a change of the XYZ color 20.0943, 17.5871, 7.8044 by changing the saturation by 10% instead.

■ 20.0943, 17.5871,
7.8044

■ 20.0943, 17.5871,
7.8044

245.2490,
238.5333, 184.0666

■ 12.5723, 10.6540,
3.8841

■ 43.0780, 39.3325,
22.1139

■ 7.2096, 5.8347,
1.5620

■ 59.2703, 54.9135,
33.3401

■ 3.6410, 2.7448,
0.2635

■ 79.0835, 74.1460,
47.8388

■ 1.5011, 1.0000,
0.0000

■ 102.8828, 97.4142,
66.0283

■ 0.3266, 0.0000,
0.0000

■ 131.0337,
125.1027, 88.3273

■ 0.0000, 0.0000,
0.0000

163.9014,

157.5958, 115.1544

201.8514,
195.2779, 146.9280

■ 20.0943, 17.5871,
7.8044

■ 20.0943, 17.5871,
7.8044

■ 18.7745, 15.6180,
5.2977

■ 21.6522, 19.8246,
11.0321

■ 17.6772, 13.9031,
3.4532

■ 23.4599, 22.3382,
15.0309

■ 16.7869, 12.4311,
2.2049

■ 25.5296, 25.1389,
19.8477

■ 16.0802, 11.1862,
1.4495

■ 27.8723, 28.2360,
25.5253

■ 15.8895, 10.8470,
1.2562

■ 30.4984, 31.6383,
32.1036

■ 33.4176, 35.3543,
39.6197

■ 36.6392, 39.3922,
48.1090

■ 40.1721, 43.7598,
57.6046

■ 44.0247, 48.4646,
68.1385

Harmonies

Analogous

The Analogous color harmony consists of three colors that are next to each other on the color wheel.



22.6468, 17.5871, 11.9754



20.0943, 17.5871, 7.8044



16.8711, 17.5871, 6.4831

Triad

The Triadic color harmony groups three colors that are evenly spaced from another and form a triangle on the color wheel.



20.0943, 17.5871, 7.8044



11.3444, 17.5871, 18.7099



19.7930, 17.5871, 38.8827

Complementary

The Complementary color scheme is a pair of colors which are on the opposite of each other on the color wheel.



20.0943, 17.5871, 7.8044



15.5147, 17.6159, 34.9302

Split Complementary

Split-complementary colors differ from the complementary color scheme. The scheme consists of three colors, the original color and two neighbors of the complement color.



16.5619, 17.5871, 42.3668



20.0943, 17.5871, 7.8044



11.9232, 17.5871, 28.7338

Square

The Square scheme is like the rectangle color scheme, but the four colors are evenly spaced on the color wheel.



20.0943, 17.5871, 7.8044



12.0470, 17.5871, 11.4232



13.7393, 17.5871, 38.1770



22.4580, 17.5871, 29.7508

Rectangle

The Rectangle color scheme consists of four colors that form a rectangle on the color wheel.



20.0943, 17.5871, 7.8044



14.8559, 17.5871, 6.9294



13.7393, 17.5871, 38.1770



18.7253, 17.5871, 40.8596

Sweetspot

The Sweet Spot groups the original color and five complimentary colors.



20.0947, 17.5880, 7.8047



50.4492, 51.0581, 45.9428



19.6806, 12.8086, 19.8475



11.1867, 11.2657, 9.8987



76.7382, 80.7346, 87.9200



13.3056, 13.9985, 15.2444

Same Dimension

The Same Dimension uses a secret algorithm to generate beautiful new colors.



20.0947, 17.5880, 7.8047



33.5872, 27.5839, 8.7231



25.8914, 29.1814, 9.7370



6.8400, 7.0599, 6.9879



12.7625, 8.7605, 1.0183



0.2684, 0.2370, 0.0316

Inverse Universe

The Inverse Universe completely reimagines the original color for something new.



15.5147, 17.6159, 34.9302



24.4251, 27.5732, 62.7783



11.2095, 9.0055, 33.4952



6.5990, 7.0637, 8.4223



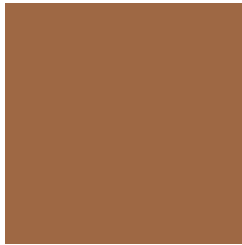
8.2446, 8.5808, 27.1289



0.1880, 0.2346, 0.4986

Previews

White Background



This preview shows how the XYZ color 20.0943, 17.5871, 7.8044 looks on a white background.

Color Contrast Check

Large Text (above 18pt) WCAG AA ✓ Pass

Any Text WCAG AA ✓ Pass

Large Text (above 18pt) WCAG AAA ✓ Pass

Any Text WCAG AAA × Fail

Black Background



This preview shows how the XYZ color 20.0943, 17.5871, 7.8044 looks on a black background.

Color Contrast Check

Large Text (above 18pt) WCAG AA ✓ Pass

Any Text WCAG AA ✓ Pass

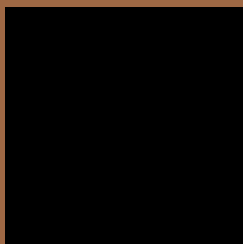
Large Text (above 18pt) WCAG AAA ✓ Pass

Any Text WCAG AAA × Fail

If you want to check with other color combinations, try the [Color Contrast Checker](#).

XYZ 20.0943, 17.5871, 7.8044

Background



This preview shows how black text looks on a background with the XYZ color 20.0943, 17.5871, 7.8044.



This preview shows how white text looks on a background with the XYZ color 20.0943, 17.5871,

Color Blindness Simulation

Color vision deficiency is a very complex topic, and I could not describe the different causes any better than Wikipedia does, so if you want to learn more, you should check out their [article about color blindness](#).

Dichromacy



Original Color

20.0943, 17.5871, 7.8044

Protanopia

16.3163, 17.7156, 8.8628

Deuteranopia

17.8231, 17.5130, 7.5952



Tritanopia

21.8136, 17.5623, 16.1501

Trichromacy



Original Color

20.0943, 17.5871, 7.8044

Protanomaly

17.4127, 17.4465, 8.4110

Deuteranomaly

18.5884, 17.4263, 7.6941

Tritanomaly

21.1267, 17.5713, 12.6340

Monochromacy



Original Color

20.0943, 17.5871, 7.8044

Achromatopsia

16.6002, 17.4647, 19.0191

Achromatomaly

17.4064, 17.3145, 14.2290

CSS Examples

Text

The CSS property to change the color of the text to XYZ 20.0943, 17.5871, 7.8044 is called "color". The color property can be set on classes, ids or directly on the HTML element.

This example shows how text in the color `rgb(158, 104, 68)` looks like.

```
.text, #text, p{  
    color:rgb(158, 104, 68)  
}
```

If you want to add a text shadow in that color use the text-shadow property, you can generate a text shadow directly with our [CSS Text Shadow Generator](#).

Here you see how black text with a 4 pixel rgb(158, 104, 68) colored shadow looks like.

```
.shadow{ text-shadow: 4px 4px 2px rgb(158, 104, 68) }
```

Border

The CSS property to change the border of an element to XYZ 20.0943, 17.5871, 7.8044 is called "border". The border property can be set on classes, ids or directly on the HTML element.

This example shows the color as border, it can be applied via the CSS property "border" or "border-color".

```
.border, #border, table{ border:4px solid rgb(158, 104, 68) }
```


If only the border color should be changed use the property `border-color`.

```
.border{ border-color:rgb(158, 104, 68) }
```

If you want to add a box shadow in that color use:

Here you see how a box with a 4 pixel `rgb(158, 104, 68)` colored shadow looks like.

```
.boxshadow{ -moz-box-shadow:4px 4px 4px  
4px rgb(158, 104, 68); -webkit-box-  
shadow:4px 4px 4px 4px rgb(158, 104, 68);  
box-shadow:4px 4px 4px 4px rgb(158, 104,  
68) }
```

Background

The CSS property to change the background color of an element to XYZ 20.0943, 17.5871, 7.8044 is called "background". The background property can be set on classes, ids or directly on the HTML element.

```
.background, #background, body{  
background: rgb(158, 104, 68) }
```

If only the background color should be changed can be used:

```
.background{ background-color: rgb(158,  
104, 68) }
```

This example shows the color as background, it is applied via the CSS property "background".

To optimize and compress your CSS code, you can use our [online CSS compressor and optimizer](#) based on csstidy. If you want to create a linear or radial gradient as background or border, check our [CSS Gradient Generator](#).

Hey! You found this booklet interesting? Support Converting Colors with the new Membership Option!

The pro membership hides all ads, plus gives you double the colors in the color bucket, and more awesome pro features!

[Learn more, Memberships starting at \\$2.50/m!](#)

**Follow me
on Twitter!**

@ConvertingColor