

Converting Colors

XYZ(20.1317, 17.3199, 8.9907)

Have a look what the booklet for
XYZ(20.1317, 17.3199, 8.9907)
contains.

XYZ(20.1219, 17.2798, 8.9314)	3
<i>Conversions</i>	4
<i>Details</i>	6
<i>Harmonies</i>	12
<i>Previews</i>	24
<i>Color Blindness Simulation</i>	28
<i>CSS Examples</i>	31

Color

**XYZ(20.1219, 17.2798,
8.9314)**

Conversions

Conversions Part 1

Format	Color
Hex	9E664B
RGB	158, 102, 75
RGB Percent	62%, 40%, 29%
CMY	0.3804, 0.6000, 0.7059
CMYK	0.00, 0.35, 0.53, 0.38
HSL	20°, 36%, 46%
HSV	20°, 53%, 62%
XYZ	20.1219, 17.2798, 8.9314
YIQ	115.6660, 42.0430, 3.4750

Conversions

Conversions Part 2

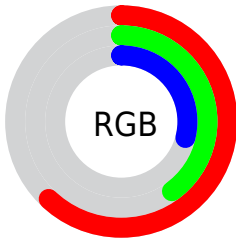
Format	Color
R _Y B	158, 115, 75
Decimal	10380875
CIE Lab	48.61, 19.50, 24.50
CIE LCh	49, 31.314, 51.476
Yxy	17.2798, 0.4343, 0.3729
Android (android.graphics.Color)	4288570955 (0xFF9E664B)
YUV	115.6660, -20.0483, 37.1269
Hunter-Lab	41.5690, 13.6591, 16.3594

Details

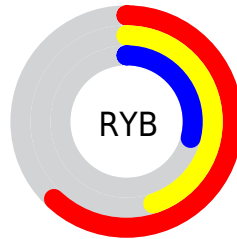
The XYZ color **20.1219, 17.2798, 8.9314** is a dark color, and the websafe version is hex **996633**. A complement of this color would be **17.1891, 20.1962, 35.3399**, and the grayscale version is **16.5490, 17.4108, 18.9604**.

A 20% lighter version of the original color is **43.0537, 38.6848, 24.2665**, and **7.1470, 5.6156, 1.9355** is the 20% darker color. If you saturate the color by 10%, you get **18.6658, 15.1282, 6.1013**, and if you desaturate by 10%, it is **21.8479, 19.7563, 12.5144**.

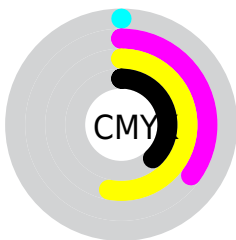
Distribution



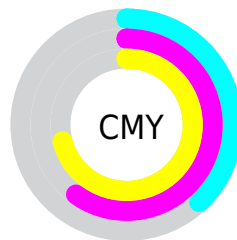
- Red (62%)
- Green (40%)
- Blue (29%)



- Red (62%)
- Yellow (45%)
- Blue (29%)



- Cyan (0%)
- Magenta (35%)
- Yellow (53%)
- Black (38%)



- Cyan (38%)
- Magenta (60%)
- Yellow (71%)

Brightness & Saturation Gradients

These gradients show how the XYZ color 20.1219, 17.2798, 8.9314 changes by changing the brightness by 10 percent. The first figure shows a shift by +10% for each color and the second figure -10%.

Similar to the brightness gradients but the following saturation gradients show a change of the XYZ color 20.1219, 17.2798, 8.9314 by changing the saturation by 10% instead.

■ 20.1219, 17.2798,
8.9314

■ 20.1219, 17.2798,
8.9314

245.3953,
236.7797, 193.0645

■ 12.5925, 10.4342,
4.6003

■ 43.1238, 38.8062,
24.3408

■ 7.2236, 5.6878,
1.9601

■ 59.3271, 54.2558,
36.2560

■ 3.6499, 2.6562,
0.5306

■ 79.1523, 73.3422,
51.5365

■ 1.5060, 0.9550,
0.0000

■ 102.9648, 96.4498,
70.6006

■ 0.3299, 0.0000,
0.0000

■ 131.1300,
123.9629, 93.8669

■ 0.0000, 0.0000,
0.0000

164.0132,

156.2660, 121.7540

201.9799,
193.7434, 154.6803

■ 20.1219, 17.2798,
8.9314

■ 20.1219, 17.2798,
8.9314

■ 18.6658, 15.1282,
6.1013

■ 21.8479, 19.7563,
12.5144

■ 17.4630, 13.2846,
3.9681

■ 23.8565, 22.5685,
16.8989

■ 16.4971, 11.7345,
2.4692

■ 26.1610, 25.7296,
22.1304

■ 15.7485, 10.4608,
1.5306

■ 28.7733, 29.2515,
28.2507

■ 15.3021, 9.6722,
1.0604

■ 31.7050, 33.1455,
35.2989

■ 34.9666, 37.4222,
43.3118

■ 38.5684, 42.0920,
52.3240

■ 42.5202, 47.1648,
62.3685

■ 46.8314, 52.6500,
73.4768

Harmonies

Analogous

The Analogous color harmony consists of three colors that are next to each other on the color wheel.



22.1377, 17.2798, 13.5832



20.1219, 17.2798, 8.9314



17.2589, 17.2798, 7.0814

Triad

The Triadic color harmony groups three colors that are evenly spaced from another and form a triangle on the color wheel.



20.1219, 17.2798, 8.9314



11.5317, 17.2798, 16.5595



18.5369, 17.2798, 37.7789

Complementary

The Complementary color scheme is a pair of colors which are on the opposite of each other on the color wheel.



20.1219, 17.2798, 8.9314



17.1891, 20.1962, 35.3399

Split Complementary

Split-complementary colors differ from the complementary color scheme. The scheme consists of three colors, the original color and two neighbors of the complement color.



15.6163, 17.2798, 39.2724



20.1219, 17.2798, 8.9314



11.7890, 17.2798, 25.2419

Square

The Square scheme is like the rectangle color scheme, but the four colors are evenly spaced on the color wheel.



20.1219, 17.2798, 8.9314



12.4597, 17.2798, 10.5616



13.2093, 17.2798, 34.1579



21.1507, 17.2798, 30.5284

Rectangle

The Rectangle color scheme consists of four colors that form a rectangle on the color wheel.



20.1219, 17.2798, 8.9314



15.3462, 17.2798, 7.1556



13.2093, 17.2798, 34.1579



17.5510, 17.2798, 39.0411

Sweetspot

The Sweet Spot groups the original color and five complimentary colors.



20.1223, 17.2807, 8.9317



50.3914, 50.6239, 46.9058



20.7621, 13.9596, 23.3285



11.1540, 11.1345, 10.0903



76.7382, 80.7346, 87.9200



13.3056, 13.9985, 15.2444

Same Dimension

The Same Dimension uses a secret algorithm to generate beautiful new colors.



20.1223, 17.2807, 8.9317



33.4941, 26.8649, 10.3350



25.1605, 27.3570, 10.6111



6.8005, 6.9810, 6.9747



12.2881, 7.8119, 0.8602



0.2560, 0.2122, 0.0275

Inverse Universe

The Inverse Universe completely reimagines the original color for something new.



17.1891, 20.1962, 35.3399



27.5356, 32.6645, 63.5970



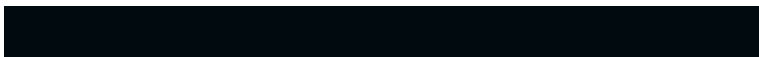
12.7478, 11.3136, 33.8595



6.6398, 7.1453, 8.4359



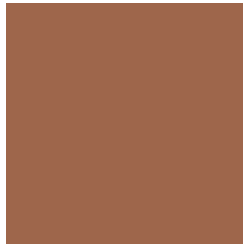
9.1568, 10.4052, 27.4330



0.2004, 0.2594, 0.5027

Previews

White Background



This preview shows how the XYZ color 20.1219, 17.2798, 8.9314 looks on a white background.

Color Contrast Check

Large Text (above 18pt) WCAG AA ✓ Pass

Any Text WCAG AA ✓ Pass

Large Text (above 18pt) WCAG AAA ✓ Pass

Any Text WCAG AAA × Fail

Black Background



This preview shows how the XYZ color 20.1219, 17.2798, 8.9314 looks on a black background.

Color Contrast Check

Large Text (above 18pt) WCAG AA ✓ Pass

Any Text WCAG AA × Fail

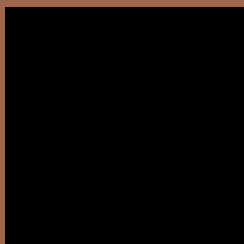
Large Text (above 18pt) WCAG AAA × Fail

Any Text WCAG AAA × Fail

If you want to check with other color combinations, try the [Color Contrast Checker](#).

XYZ 20.1219, 17.2798, 8.9314

Background



This preview shows how black text looks on a background with the XYZ color 20.1219, 17.2798, 8.9314.



This preview shows how white text looks on a background with the XYZ color 20.1219, 17.2798,

8.9314.

Color Blindness Simulation

Color vision deficiency is a very complex topic, and I could not describe the different causes any better than Wikipedia does, so if you want to learn more, you should check out their [article about color blindness](#).

Dichromacy



Original Color

20.1219, 17.2798, 8.9314

Protanopia

16.1880, 17.4448, 10.2986

Deuteranopia

17.7023, 17.4254, 8.7338



Tritanopia

21.4147, 17.2289, 15.5614

Trichromacy



Original Color

20.1219, 17.2798, 8.9314

Protanomaly

17.4123, 17.2518, 9.8093

Deuteranomaly

18.6312, 17.4226, 8.8595

Tritanomaly

20.7803, 17.1028, 12.7956

Monochromacy



Original Color

20.1219, 17.2798, 8.9314

Achromatopsia

16.6002, 17.4647, 19.0191

Achromatomaly

17.3935, 17.1338, 14.7023

CSS Examples

Text

The CSS property to change the color of the text to XYZ 20.1219, 17.2798, 8.9314 is called "color". The color property can be set on classes, ids or directly on the HTML element.

This example shows how text in the color `rgb(158, 102, 75)` looks like.

```
.text, #text, p{  
    color:rgb(158, 102, 75)  
}
```

If you want to add a text shadow in that color use the text-shadow property, you can generate a text shadow directly with our [CSS Text Shadow Generator](#).

Here you see how black text with a 4 pixel rgb(158, 102, 75) colored shadow looks like.

```
.shadow{ text-shadow: 4px 4px 2px rgb(158, 102, 75) }
```

Border

The CSS property to change the border of an element to XYZ 20.1219, 17.2798, 8.9314 is called "border". The border property can be set on classes, ids or directly on the HTML element.

This example shows the color as border, it can be applied via the CSS property "border" or "border-color".

```
.border, #border, table{ border:4px solid rgb(158, 102, 75) }
```


If only the border color should be changed use the property `border-color`.

```
.border{ border-color:rgb(158, 102, 75) }
```

If you want to add a box shadow in that color use:

Here you see how a box with a 4 pixel `rgb(158, 102, 75)` colored shadow looks like.

```
.boxshadow{ -moz-box-shadow:4px 4px 4px  
4px rgb(158, 102, 75); -webkit-box-  
shadow:4px 4px 4px 4px rgb(158, 102, 75);  
box-shadow:4px 4px 4px 4px rgb(158, 102,  
75) }
```

Background

The CSS property to change the background color of an element to XYZ 20.1219, 17.2798, 8.9314 is called "background". The background property can be set on classes, ids or directly on the HTML element.

```
.background, #background, body{  
background: rgb(158, 102, 75) }
```

If only the background color should be changed can be used:

```
.background{ background-color: rgb(158,  
102, 75) }
```

This example shows the color as background, it is applied via the CSS property "background".

To optimize and compress your CSS code, you can use our [online CSS compressor and optimizer](#) based on csstidy. If you want to create a linear or radial gradient as background or border, check our [CSS Gradient Generator](#).

Hey! You found this booklet interesting? Support Converting Colors with the new Membership Option!

The pro membership hides all ads, plus gives you double the colors in the color bucket, and more awesome pro features!

[Learn more, Memberships starting at \\$2.50/m!](#)

**Follow me
on Twitter!**

@ConvertingColor