

Converting Colors

XYZ(20.2987, 18.8610, 13.2102)

Have a look what the booklet for
XYZ(20.2987, 18.8610, 13.2102)
contains.

XYZ(20.2090, 18.7861, 13.1506)	3
<i>Conversions</i>	4
<i>Details</i>	6
<i>Harmonies</i>	12
<i>Previews</i>	24
<i>Color Blindness Simulation</i>	28
<i>CSS Examples</i>	31

Color

**XYZ(20.2090, 18.7861,
13.1506)**

Conversions

Conversions Part 1

Format	Color
Hex	95705E
RGB	149, 112, 94
RGB Percent	58%, 44%, 37%
CMY	0.4157, 0.5608, 0.6314
CMYK	0.00, 0.25, 0.37, 0.42
HSL	20°, 23%, 48%
HSV	20°, 37%, 58%
XYZ	20.2090, 18.7861, 13.1506
YIQ	121.0110, 27.8300, 2.2460

Conversions

Conversions Part 2

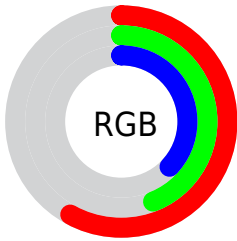
Format	Color
R_{YB}	149, 121, 94
Decimal	9793630
CIE Lab	50.44, 12.07, 15.68
CIE LCh	50, 19.788, 52.429
Yxy	18.7861, 0.3875, 0.3603
Android (android.graphics.Color)	4287983710 (0xFF95705E)
YUV	121.0110, -13.3164, 24.5464
Hunter-Lab	43.3429, 7.3770, 12.3510

Details

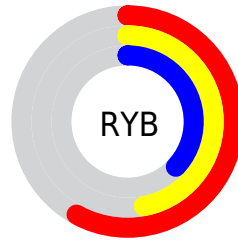
The XYZ color **20.2090, 18.7861, 13.1506** is a dark color, and the websafe version is hex **996666**. A complement of this color would be **18.1569, 20.7814, 31.4880**, and the grayscale version is **18.2133, 19.1618, 20.8673**.

A 20% lighter version of the original color is **43.2113, 41.4019, 32.0994**, and **7.2967, 6.4216, 3.6512** is the 20% darker color. If you saturate the color by 10%, you get **18.5589, 16.4546, 9.6143**, and if you desaturate by 10%, it is **22.1122, 21.4172, 17.4085**.

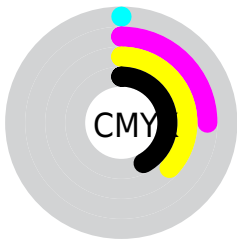
Distribution



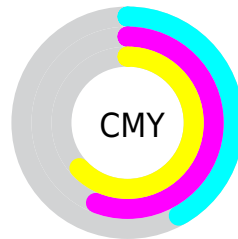
- Red (58%)
- Green (44%)
- Blue (37%)



- Red (58%)
- Yellow (47%)
- Blue (37%)



- Cyan (0%)
- Magenta (25%)
- Yellow (37%)
- Black (42%)



- Cyan (42%)
- Magenta (56%)
- Yellow (63%)

Brightness & Saturation Gradients

These gradients show how the XYZ color 20.2090, 18.7861, 13.1506 changes by changing the brightness by 10 percent. The first figure shows a shift by +10% for each color and the second figure -10%.

Similar to the brightness gradients but the following saturation gradients show a change of the XYZ color 20.2090, 18.7861, 13.1506 by changing the saturation by 10% instead.

■ 20.2090, 18.7861,
13.1506

■ 20.2090, 18.7861,
13.1506

245.8564,
245.2654, 223.1222

■ 12.6562, 11.5158,
7.4004

■ 43.2686, 41.3723,
32.2692

■ 7.2676, 6.4149,
3.6315

■ 59.5061, 57.4571,
46.4747

■ 3.6778, 3.0990,
1.4255

■ 79.3692, 77.2488,
64.3357

■ 1.5215, 1.1836,
0.1615

■ 103.2233,
101.1319, 86.2708

■ 0.3404, 0.0483,
0.0000

131.4337,
129.4906, 112.6984

■ 0.0000, 0.0000,
0.0000

164.3658,

162.7096, 144.0371

202.3849,
201.1730, 180.7056

■ 20.2090, 18.7861,
13.1506

■ 20.2090, 18.7861,
13.1506

■ 18.5589, 16.4546,
9.6143

■ 22.1122, 21.4172,
17.4085

■ 17.1492, 14.4092,
6.7579

■ 24.2779, 24.3557,
22.4244

■ 15.9677, 12.6388,
4.5371

■ 26.7166, 27.6124,
28.2333

■ 15.0008, 11.1309,
2.9017

■ 29.4376, 31.1967,
34.8679

■ 14.2330, 9.8717,
1.7940

■ 32.4501, 35.1175,
42.3590

■ 13.6418, 8.8439,
1.1202

■ 35.7627, 39.3836,
50.7357

■ 13.4833, 8.5673,
0.9430

■ 39.3836, 44.0034,
60.0260

■ 43.3206, 48.9847,
70.2563

■ 47.5815, 54.3355,
81.4523

Harmonies

Analogous

The Analogous color harmony consists of three colors that are next to each other on the color wheel.



21.5003, 18.7861, 16.6709



20.2090, 18.7861, 13.1506



18.3477, 18.7861, 11.6433

Triad

The Triadic color harmony groups three colors that are evenly spaced from another and form a triangle on the color wheel.



20.2090, 18.7861, 13.1506



14.4320, 18.7861, 19.0898



19.3055, 18.7861, 31.9017

Complementary

The Complementary color scheme is a pair of colors which are on the opposite of each other on the color wheel.



20.2090, 18.7861, 13.1506



18.1569, 20.7814, 31.4880

Split Complementary

Split-complementary colors differ from the complementary color scheme. The scheme consists of three colors, the original color and two neighbors of the complement color.



17.3724, 18.7861, 32.8655



20.2090, 18.7861, 13.1506



14.6480, 18.7861, 24.7720

Square

The Square scheme is like the rectangle color scheme, but the four colors are evenly spaced on the color wheel.



20.2090, 18.7861, 13.1506



15.0796, 18.7861, 14.6481



15.6924, 18.7861, 30.0600



20.9531, 18.7861, 27.6233

Rectangle

The Rectangle color scheme consists of four colors that form a rectangle on the color wheel.



20.2090, 18.7861, 13.1506



17.0707, 18.7861, 11.7508



15.6924, 18.7861, 30.0600



18.6642, 18.7861, 32.6519

Sweetspot

The Sweet Spot groups the original color and five complimentary colors.



20.2095, 18.7870, 13.1510



45.9021, 46.8650, 45.8994



20.5336, 16.0497, 23.6964



10.0561, 10.2304, 9.8945



71.1368, 74.8414, 81.5023



11.3376, 11.9280, 12.9896

Same Dimension

The Same Dimension uses a secret algorithm to generate beautiful new colors.



20.2095, 18.7870, 13.1510



33.7982, 30.2696, 18.3964



23.6354, 25.6389, 14.2930



5.9466, 6.1070, 6.1058



11.3729, 7.2602, 0.8019



0.1639, 0.1383, 0.0181

Inverse Universe

The Inverse Universe completely reimagines the original color for something new.



18.1569, 20.7814, 31.4880



29.5797, 34.3389, 55.9903



14.9998, 14.4672, 30.4357



5.8057, 6.2455, 7.3692



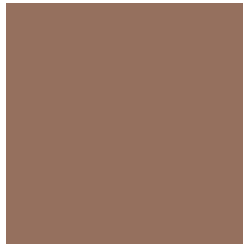
8.4473, 9.5895, 25.3368



0.1304, 0.1713, 0.3191

Previews

White Background



This preview shows how the XYZ color 20.2090, 18.7861, 13.1506 looks on a white background.

Color Contrast Check

Large Text (above 18pt) WCAG AA ✓ Pass

Any Text WCAG AA × Fail

Large Text (above 18pt) WCAG AAA × Fail

Any Text WCAG AAA × Fail

Black Background



This preview shows how the XYZ color 20.2090, 18.7861, 13.1506 looks on a black background.

Color Contrast Check

Large Text (above 18pt) WCAG AA ✓ Pass

Any Text WCAG AA ✓ Pass

Large Text (above 18pt) WCAG AAA ✓ Pass

Any Text WCAG AAA × Fail

If you want to check with other color combinations, try the [Color Contrast Checker](#).

XYZ 20.2090, 18.7861, 13.1506

Background



This preview shows how black text looks on a background with the XYZ color 20.2090, 18.7861, 13.1506.



This preview shows how white text looks on a background with the XYZ color 20.2090, 18.7861,

Color Blindness Simulation

Color vision deficiency is a very complex topic, and I could not describe the different causes any better than Wikipedia does, so if you want to learn more, you should check out their [article about color blindness](#).

Dichromacy



Original Color

20.2090, 18.7861, 13.1506

Protanopia

17.6735, 18.8268, 14.2577

Deuteranopia

19.0910, 18.7145, 12.9620



Tritanopia

21.4420, 18.8009, 19.3284

Trichromacy



Original Color

20.2090, 18.7861, 13.1506

Protanomaly

18.5106, 18.7365, 13.9502

Deuteranomaly

19.4947, 18.7542, 12.9484

Tritanomaly

20.9139, 18.7400, 16.9829

Monochromacy



Original Color

20.2090, 18.7861, 13.1506

Achromatopsia

18.1737, 19.1202, 20.8219

Achromatomaly

18.7077, 18.9299, 17.7067

CSS Examples

Text

The CSS property to change the color of the text to XYZ 20.2090, 18.7861, 13.1506 is called "color". The color property can be set on classes, ids or directly on the HTML element.

This example shows how text in the color `rgb(149, 112, 94)` looks like.

```
.text, #text, p{  
    color:rgb(149, 112, 94)  
}
```

If you want to add a text shadow in that color use the text-shadow property, you can generate a text shadow directly with our [CSS Text Shadow Generator](#).

Here you see how black text with a 4 pixel rgb(149, 112, 94) colored shadow looks like.

```
.shadow{ text-shadow: 4px 4px 2px rgb(149, 112, 94) }
```

Border

The CSS property to change the border of an element to XYZ 20.2090, 18.7861, 13.1506 is called "border". The border property can be set on classes, ids or directly on the HTML element.

This example shows the color as border, it can be applied via the CSS property "border" or "border-color".

```
.border, #border, table{ border:4px solid rgb(149, 112, 94) }
```


If only the border color should be changed use the property `border-color`.

```
.border{ border-color:rgb(149, 112, 94) }
```

If you want to add a box shadow in that color use:

Here you see how a box with a 4 pixel `rgb(149, 112, 94)` colored shadow looks like.

```
.boxshadow{ -moz-box-shadow:4px 4px 4px  
4px rgb(149, 112, 94); -webkit-box-  
shadow:4px 4px 4px 4px rgb(149, 112, 94);  
box-shadow:4px 4px 4px 4px rgb(149, 112,  
94) }
```

Background

The CSS property to change the background color of an element to XYZ 20.2090, 18.7861, 13.1506 is called "background". The background property can be set on classes, ids or directly on the HTML element.

```
.background, #background, body{  
background: rgb(149, 112, 94) }
```

If only the background color should be changed can be used:

```
.background{ background-color: rgb(149,  
112, 94) }
```

This example shows the color as background, it is applied via the CSS property "background".

To optimize and compress your CSS code, you can use our [online CSS compressor and optimizer](#) based on csstidy. If you want to create a linear or radial gradient as background or border, check our [CSS Gradient Generator](#).

Hey! You found this booklet interesting? Support Converting Colors with the new Membership Option!

The pro membership hides all ads, plus gives you double the colors in the color bucket, and more awesome pro features!

[Learn more, Memberships starting at \\$2.50/m!](#)

**Follow me
on Twitter!**

@ConvertingColor