

Converting Colors

XYZ(20.7145, 18.4187, 10.3160)

Have a look what the booklet for
XYZ(20.7145, 18.4187, 10.3160)
contains.

XYZ(20.7524, 18.4873, 10.2592)	3
<i>Conversions</i>	4
<i>Details</i>	6
<i>Harmonies</i>	12
<i>Previews</i>	24
<i>Color Blindness Simulation</i>	28
<i>CSS Examples</i>	31

Color

**XYZ(20.7524, 18.4873,
10.2592)**

Conversions

Conversions Part 1

Format	Color
Hex	9D6C51
RGB	157, 108, 81
RGB Percent	62%, 42%, 32%
CMY	0.3843, 0.5765, 0.6823
CMYK	0.00, 0.31, 0.48, 0.38
HSL	21°, 32%, 47%
HSV	21°, 48%, 62%
XYZ	20.7524, 18.4873, 10.2592
YIQ	119.5730, 37.8710, 1.9910

Conversions

Conversions Part 2

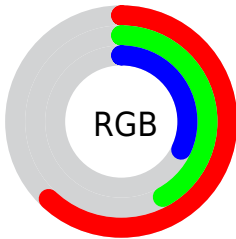
Format	Color
RYB	157, 123, 81
Decimal	10316881
CIELab	50.08, 16.24, 22.93
CIELCh	50, 28.097, 54.683
Yxy	18.4873, 0.4192, 0.3735
Android (android.graphics.Color)	4288506961 (0xFF9D6C51)
YUV	119.5730, -19.0165, 32.8235
Hunter-Lab	42.9969, 10.9084, 15.9510

Details

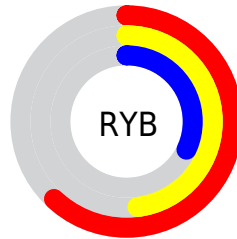
The XYZ color **20.7524, 18.4873, 10.2592** is a dark color, and the websafe version is hex **996633**. A complement of this color would be **17.4614, 20.1481, 34.8669**, and the grayscale version is **17.7670, 18.6923, 20.3559**.

A 20% lighter version of the original color is **44.3991, 41.0764, 27.0612**, and **7.5278, 6.2427, 2.4773** is the 20% darker color. If you saturate the color by 10%, you get **19.2242, 16.2667, 7.1734**, and if you desaturate by 10%, it is **22.5416, 21.0121, 14.1040**.

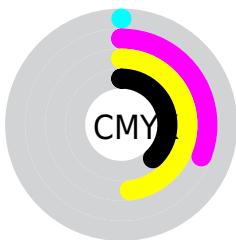
Distribution



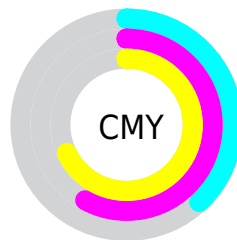
- Red (62%)
- Green (42%)
- Blue (32%)



- Red (62%)
- Yellow (48%)
- Blue (32%)



- Cyan (0%)
- Magenta (31%)
- Yellow (48%)
- Black (38%)



- Cyan (38%)
- Magenta (58%)
- Yellow (68%)

Brightness & Saturation Gradients

These gradients show how the XYZ color 20.7524, 18.4873, 10.2592 changes by changing the brightness by 10 percent. The first figure shows a shift by +10% for each color and the second figure -10%.

Similar to the brightness gradients but the following saturation gradients show a change of the XYZ color 20.7524, 18.4873, 10.2592 by changing the saturation by 10% instead.

■ 20.7524, 18.4873,
10.2592

■ 20.7524, 18.4873,
10.2592

248.7164,
243.6036, 203.0637

■ 13.0546, 11.3004,
5.4633

■ 44.1695, 40.8659,
26.8973

■ 7.5434, 6.2693,
2.4581

■ 60.6194, 56.8265,
39.5766

■ 3.8535, 3.0095,
0.8178

■ 80.7175, 76.4803,
55.7208

■ 1.6196, 1.1367,
0.0000

■ 104.8290,
100.2119, 75.7484

■ 0.4051, 0.0091,
0.0000

■ 133.3192,
128.4057, 100.0779

■ 0.0000, 0.0000,
0.0000

166.5537,

161.4459, 129.1279

204.8976,
199.7171, 163.3170

■ 20.7524, 18.4873,
10.2592

■ 20.7524, 18.4873,
10.2592

■ 19.2242, 16.2667,
7.1734

■ 22.5416, 21.0121,
14.1040

■ 17.9419, 14.3352,
4.7940

■ 24.6031, 23.8499,
18.7533

■ 16.8908, 12.6807,
3.0633

■ 26.9491, 27.0123,
24.2505

■ 16.0535, 11.2886,
1.9137

■ 29.5905, 30.5097,
30.6352

■ 15.4011, 10.1392,
1.2171

■ 32.5378, 34.3518,
37.9449

■ 15.3083, 9.9755,
1.1186

■ 35.8007, 38.5482,
46.2146

■ 39.3888, 43.1076,
55.4776

■ 43.3110, 48.0389,
65.7657

■ 47.5759, 53.3505,
77.1090

Harmonies

Analogous

The Analogous color harmony consists of three colors that are next to each other on the color wheel.



22.7326, 18.4873, 14.5291



20.7524, 18.4873, 10.2592



18.0579, 18.4873, 8.6444

Triad

The Triadic color harmony groups three colors that are evenly spaced from another and form a triangle on the color wheel.



20.7524, 18.4873, 10.2592



12.8860, 18.4873, 18.7807



19.8337, 18.4873, 36.9196

Complementary

The Complementary color scheme is a pair of colors which are on the opposite of each other on the color wheel.



20.7524, 18.4873, 10.2592



17.4614, 20.1481, 34.8669

Split Complementary

Split-complementary colors differ from the complementary color scheme. The scheme consists of three colors, the original color and two neighbors of the complement color.



17.0941, 18.4873, 38.8966



20.7524, 18.4873, 10.2592



13.2576, 18.4873, 27.0108

Square

The Square scheme is like the rectangle color scheme, but the four colors are evenly spaced on the color wheel.



20.7524, 18.4873, 10.2592



13.6610, 18.4873, 12.6893



14.7337, 18.4873, 34.8901



22.1652, 18.4873, 30.0244

Rectangle

The Rectangle color scheme consists of four colors that form a rectangle on the color wheel.



20.7524, 18.4873, 10.2592



16.2863, 18.4873, 8.8870



14.7337, 18.4873, 34.8901



18.9228, 18.4873, 38.2452

Sweetspot

The Sweet Spot groups the original color and five complimentary colors.



20.7529, 18.4882, 10.2596



49.6806, 50.2643, 46.8219



20.9033, 14.6756, 22.9912



10.7356, 10.7992, 9.8324



74.8435, 78.7412, 85.7492



12.6291, 13.2868, 14.4694

Same Dimension

The Same Dimension uses a secret algorithm to generate beautiful new colors.



20.7529, 18.4882, 10.2596



34.2514, 28.8696, 12.5038



25.6072, 28.1969, 11.8777



6.8163, 7.0126, 6.9800



12.4655, 8.1667, 0.9193



0.2609, 0.2221, 0.0291

Inverse Universe

The Inverse Universe completely reimagines the original color for something new.



17.4614, 20.1481, 34.8669



27.6206, 32.1493, 61.8764



13.3412, 11.9076, 33.4935



6.6234, 7.1125, 8.4304



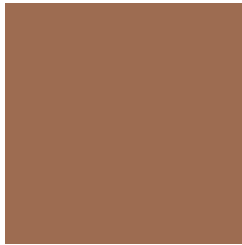
8.7753, 9.6421, 27.3058



0.1954, 0.2495, 0.5011

Previews

White Background



This preview shows how the XYZ color 20.7524, 18.4873, 10.2592 looks on a white background.

Color Contrast Check

Large Text (above 18pt) WCAG AA ✓ Pass

Any Text WCAG AA × Fail

Large Text (above 18pt) WCAG AAA × Fail

Any Text WCAG AAA × Fail

Black Background



This preview shows how the XYZ color 20.7524, 18.4873, 10.2592 looks on a black background.

Color Contrast Check

Large Text (above 18pt) WCAG AA ✓ Pass

Any Text WCAG AA ✓ Pass

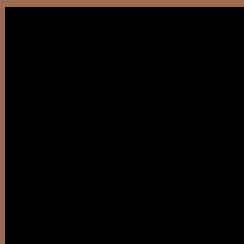
Large Text (above 18pt) WCAG AAA ✓ Pass

Any Text WCAG AAA × Fail

If you want to check with other color combinations, try the [Color Contrast Checker](#).

XYZ 20.7524, 18.4873, 10.2592

Background



This preview shows how black text looks on a background with the XYZ color 20.7524, 18.4873, 10.2592.



This preview shows how white text looks on a background with the XYZ color 20.7524, 18.4873,

Color Blindness Simulation

Color vision deficiency is a very complex topic, and I could not describe the different causes any better than Wikipedia does, so if you want to learn more, you should check out their [article about color blindness](#).

Dichromacy



Original Color

20.7524, 18.4873, 10.2592

Protanopia

17.3298, 18.5327, 11.4679

Deuteranopia

18.7930, 18.4535, 10.1608



Tritanopia

22.3721, 18.5441, 17.7295

Trichromacy



Original Color

20.7524, 18.4873, 10.2592

Protanomaly

18.3784, 18.3905, 10.9686

Deuteranomaly

19.4549, 18.4634, 10.1278

Tritanomaly

21.6986, 18.4137, 14.7225

Monochromacy



Original Color

20.7524, 18.4873, 10.2592

Achromatopsia

17.8524, 18.7821, 20.4537

Achromatomaly

18.5198, 18.5179, 16.2339

CSS Examples

Text

The CSS property to change the color of the text to XYZ 20.7524, 18.4873, 10.2592 is called "color". The color property can be set on classes, ids or directly on the HTML element.

This example shows how text in the color `rgb(157, 108, 81)` looks like.

```
.text, #text, p{  
    color:rgb(157, 108, 81)  
}
```

If you want to add a text shadow in that color use the text-shadow property, you can generate a text shadow directly with our [CSS Text Shadow Generator](#).

Here you see how black text with a 4 pixel rgb(157, 108, 81) colored shadow looks like.

```
.shadow{ text-shadow: 4px 4px 2px rgb(157, 108, 81) }
```

Border

The CSS property to change the border of an element to XYZ 20.7524, 18.4873, 10.2592 is called "border". The border property can be set on classes, ids or directly on the HTML element.

This example shows the color as border, it can be applied via the CSS property "border" or "border-color".

```
.border, #border, table{ border:4px solid rgb(157, 108, 81) }
```


If only the border color should be changed use the property `border-color`.

```
.border{ border-color:rgb(157, 108, 81) }
```

If you want to add a box shadow in that color use:

Here you see how a box with a 4 pixel `rgb(157, 108, 81)` colored shadow looks like.

```
.boxshadow{ -moz-box-shadow:4px 4px 4px  
4px rgb(157, 108, 81); -webkit-box-  
shadow:4px 4px 4px 4px rgb(157, 108, 81);  
box-shadow:4px 4px 4px 4px rgb(157, 108,  
81) }
```

Background

The CSS property to change the background color of an element to XYZ 20.7524, 18.4873, 10.2592 is called "background". The background property can be set on classes, ids or directly on the HTML element.

```
.background, #background, body{  
background: rgb(157, 108, 81) }
```

If only the background color should be changed can be used:

```
.background{ background-color: rgb(157,  
108, 81) }
```

This example shows the color as background, it is applied via the CSS property "background".

To optimize and compress your CSS code, you can use our [online CSS compressor and optimizer](#) based on csstidy. If you want to create a linear or radial gradient as background or border, check our [CSS Gradient Generator](#).

Hey! You found this booklet interesting? Support Converting Colors with the new Membership Option!

The pro membership hides all ads, plus gives you double the colors in the color bucket, and more awesome pro features!

[Learn more, Memberships starting at \\$2.50/m!](#)

**Follow me
on Twitter!**

@ConvertingColor