

Converting Colors

XYZ(20.7156, 19.6130, 10.2833)

Have a look what the booklet for
XYZ(20.7156, 19.6130, 10.2833)
contains.

XYZ(20.7156, 19.6130, 10.2833)	3
<i>Conversions</i>	4
<i>Details</i>	6
<i>Harmonies</i>	12
<i>Previews</i>	24
<i>Color Blindness Simulation</i>	28
<i>CSS Examples</i>	31

Color

**XYZ(20.7156, 19.6130,
10.2833)**

Conversions

Conversions Part 1

Format	Color
Hex	997350
RGB	153, 115, 80
RGB Percent	60%, 45%, 31%
CMY	0.4000, 0.5490, 0.6863
CMYK	0.00, 0.25, 0.48, 0.40
HSL	29°, 31%, 46%
HSV	29°, 48%, 60%
XYZ	20.7156, 19.6130, 10.2833
YIQ	122.3720, 33.8830, -2.8290

Conversions

Conversions Part 2

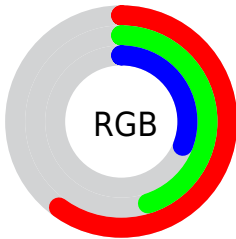
Format	Color
R_{YB}	153, 147, 80
Decimal	10056528
CIE Lab	51.40, 10.40, 25.12
CIE LCh	51, 27.188, 67.517
Yxy	19.6130, 0.4093, 0.3875
Android (android.graphics.Color)	4288246608 (0xFF997350)
YUV	122.3720, -20.8894, 26.8608
Hunter-Lab	44.2866, 5.9941, 17.2335

Details

The XYZ color **20.7156, 19.6130, 10.2833** is a dark color, and the websafe version is hex **996633**. A complement of this color would be **15.5362, 16.9616, 32.5920**, and the grayscale version is **18.6793, 19.6521, 21.4011**.

A 20% lighter version of the original color is **44.1425, 42.8044, 27.0546**, and **7.5514, 6.8391, 2.4355** is the 20% darker color. If you saturate the color by 10%, you get **19.3443, 17.6744, 7.3477**, and if you desaturate by 10%, it is **22.2951, 21.7620, 13.9238**.

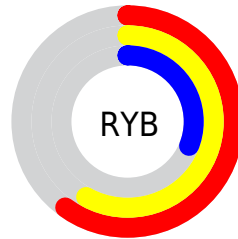
Distribution



Red (60%)

Green (45%)

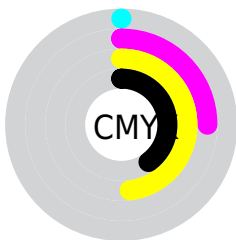
Blue (31%)



Red (60%)

Yellow (58%)

Blue (31%)

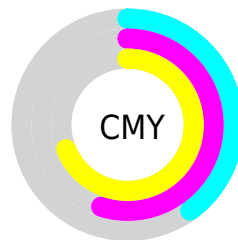


Cyan (0%)

Magenta (25%)

Yellow (48%)

Black (40%)



Cyan (40%)

Magenta (55%)

Yellow (69%)

Brightness & Saturation Gradients

These gradients show how the XYZ color 20.7156, 19.6130, 10.2833 changes by changing the brightness by 10 percent. The first figure shows a shift by +10% for each color and the second figure -10%.

Similar to the brightness gradients but the following saturation gradients show a change of the XYZ color 20.7156, 19.6130, 10.2833 by changing the saturation by 10% instead.

■ 20.7156, 19.6130,
10.2833

■ 20.7156, 19.6130,
10.2833

248.5236,
249.8123, 203.2400

■ 13.0275, 12.1140,
5.4791

■ 44.1086, 42.7674,
26.9431

■ 7.5246, 6.8214,
2.4674

■ 60.5442, 59.1916,
39.6359

■ 3.8415, 3.3507,
0.8228

■ 80.6264, 79.3597,
55.7952

■ 1.6129, 1.3174,
0.0000

■ 104.7206,
103.6561, 75.8397

■ 0.4008, 0.1546,
0.0000

■ 133.1920,
132.4652, 100.1879

■ 0.0000, 0.0000,
0.0000

166.4061,

166.1713, 129.2583

204.7282,
205.1589, 163.4695

■ 20.7156, 19.6130,
10.2833

■ 20.7156, 19.6130,
10.2833

■ 19.3443, 17.6744,
7.3477

■ 22.2951, 21.7620,
13.9238

■ 18.1689, 15.9357,
5.0686

■ 24.0913, 24.1254,
18.3110

■ 17.1778, 14.3900,
3.3932

■ 26.1138, 26.7110,
23.4847

■ 16.3574, 13.0281,
2.2598

■ 28.3713, 29.5249,
29.4814

■ 15.6848, 11.8374,
1.5587

■ 30.8719, 32.5732,
36.3356

■ 15.5434, 11.5853,
1.4170

■ 33.6234, 35.8617,
44.0796

■ 36.6330, 39.3958,
52.7439

■ 39.9078, 43.1809,
62.3579

■ 43.4545, 47.2223,
72.9494

Harmonies

Analogous

The Analogous color harmony consists of three colors that are next to each other on the color wheel.



23.1089, 19.6130, 13.4654



20.7156, 19.6130, 10.2833



17.9652, 19.6130, 9.6749

Triad

The Triadic color harmony groups three colors that are evenly spaced from another and form a triangle on the color wheel.



20.7156, 19.6130, 10.2833



13.9191, 19.6130, 23.3768



22.0142, 19.6130, 35.5878

Complementary

The Complementary color scheme is a pair of colors which are on the opposite of each other on the color wheel.



20.7156, 19.6130, 10.2833



15.5362, 16.9616, 32.5920

Split Complementary

Split-complementary colors differ from the complementary color scheme. The scheme consists of three colors, the original color and two neighbors of the complement color.



19.3347, 19.6130, 39.9300



20.7156, 19.6130, 10.2833



14.7906, 19.6130, 31.8465

Square

The Square scheme is like the rectangle color scheme, but the four colors are evenly spaced on the color wheel.



20.7156, 19.6130, 10.2833



14.2115, 19.6130, 16.1206



16.7108, 19.6130, 38.4159



23.9080, 19.6130, 27.6157

Rectangle

The Rectangle color scheme consists of four colors that form a rectangle on the color wheel.



20.7156, 19.6130, 10.2833



16.3264, 19.6130, 10.6289



16.7108, 19.6130, 38.4159



21.1658, 19.6130, 37.5988

Sweetspot

The Sweet Spot groups the original color and five complimentary colors.



20.7161, 19.6139, 10.2837



48.1075, 49.5208, 45.5780



19.3314, 13.8401, 19.0845



10.4499, 10.7181, 9.6095



72.9764, 76.7769, 83.6100



11.9732, 12.5967, 13.7178

Same Dimension

The Same Dimension uses a secret algorithm to generate beautiful new colors.



20.7161, 19.6139, 10.2837



34.5493, 31.5166, 12.9669



25.5818, 29.3455, 11.9056



6.4409, 6.6869, 6.5571



12.8795, 9.6413, 1.1821



0.2287, 0.2164, 0.0297

Inverse Universe

The Inverse Universe completely reimagines the original color for something new.



15.5362, 16.9616, 32.5920



24.1464, 26.1846, 57.7535



12.1083, 10.1058, 31.4494



6.1371, 6.5315, 7.8662



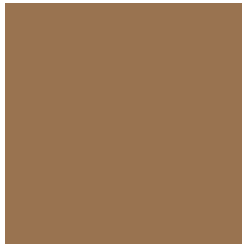
7.1346, 6.6659, 25.8183



0.1431, 0.1725, 0.3981

Previews

White Background



This preview shows how the XYZ color 20.7156, 19.6130, 10.2833 looks on a white background.

Color Contrast Check

Large Text (above 18pt) WCAG AA ✓ Pass

Any Text WCAG AA × Fail

Large Text (above 18pt) WCAG AAA × Fail

Any Text WCAG AAA × Fail

Black Background



This preview shows how the XYZ color 20.7156, 19.6130, 10.2833 looks on a black background.

Color Contrast Check

Large Text (above 18pt) WCAG AA ✓ Pass

Any Text WCAG AA ✓ Pass

Large Text (above 18pt) WCAG AAA ✓ Pass

Any Text WCAG AAA × Fail

If you want to check with other color combinations, try the [Color Contrast Checker](#).

XYZ 20.7156, 19.6130, 10.2833

Background



This preview shows how black text looks on a background with the XYZ color 20.7156, 19.6130, 10.2833.



This preview shows how white text looks on a background with the XYZ color 20.7156, 19.6130,

Color Blindness Simulation

Color vision deficiency is a very complex topic, and I could not describe the different causes any better than Wikipedia does, so if you want to learn more, you should check out their [article about color blindness](#).

Dichromacy



Original Color

20.7156, 19.6130, 10.2833

Protanopia

18.3172, 19.7770, 11.0355

Deuteranopia

20.0220, 19.5977, 10.3169



Tritanopia

22.5562, 19.5278, 19.7199

Trichromacy



Original Color

20.7156, 19.6130, 10.2833

Protanomaly

19.0547, 19.6176, 10.7649

Deuteranomaly

20.2710, 19.5540, 10.2953

Tritanomaly

21.8104, 19.5564, 15.7219

Monochromacy



Original Color

20.7156, 19.6130, 10.2833

Achromatopsia

18.4984, 19.4618, 21.1939

Achromatomaly

18.9235, 19.2417, 16.6266

CSS Examples

Text

The CSS property to change the color of the text to XYZ 20.7156, 19.6130, 10.2833 is called "color". The color property can be set on classes, ids or directly on the HTML element.

This example shows how text in the color `rgb(153, 115, 80)` looks like.

```
.text, #text, p{  
    color:rgb(153, 115, 80)  
}
```

If you want to add a text shadow in that color use the text-shadow property, you can generate a text shadow directly with our [CSS Text Shadow Generator](#).

Here you see how black text with a 4 pixel rgb(153, 115, 80) colored shadow looks like.

```
.shadow{ text-shadow: 4px 4px 2px rgb(153, 115, 80) }
```

Border

The CSS property to change the border of an element to XYZ 20.7156, 19.6130, 10.2833 is called "border". The border property can be set on classes, ids or directly on the HTML element.

This example shows the color as border, it can be applied via the CSS property "border" or "border-color".

```
.border, #border, table{ border:4px solid rgb(153, 115, 80) }
```


If only the border color should be changed use the property `border-color`.

```
.border{ border-color:rgb(153, 115, 80) }
```

If you want to add a box shadow in that color use:

Here you see how a box with a 4 pixel `rgb(153, 115, 80)` colored shadow looks like.

```
.boxshadow{ -moz-box-shadow:4px 4px 4px  
4px rgb(153, 115, 80); -webkit-box-  
shadow:4px 4px 4px 4px rgb(153, 115, 80);  
box-shadow:4px 4px 4px 4px rgb(153, 115,  
80) }
```

Background

The CSS property to change the background color of an element to XYZ 20.7156, 19.6130, 10.2833 is called "background". The background property can be set on classes, ids or directly on the HTML element.

```
.background, #background, body{  
background: rgb(153, 115, 80) }
```

If only the background color should be changed can be used:

```
.background{ background-color: rgb(153,  
115, 80) }
```

This example shows the color as background, it is applied via the CSS property "background".

To optimize and compress your CSS code, you can use our [online CSS compressor and optimizer](#) based on csstidy. If you want to create a linear or radial gradient as background or border, check our [CSS Gradient Generator](#).

Hey! You found this booklet interesting? Support Converting Colors with the new Membership Option!

The pro membership hides all ads, plus gives you double the colors in the color bucket, and more awesome pro features!

[Learn more, Memberships starting at \\$2.50/m!](#)

**Follow me
on Twitter!**

@ConvertingColor