

Converting Colors

XYZ(20.7360, 18.7601, 9.5217)

Have a look what the booklet for
XYZ(20.7360, 18.7601, 9.5217)
contains.

XYZ(20.8201, 18.8558, 9.5634)	3
<i>Conversions</i>	4
<i>Details</i>	6
<i>Harmonies</i>	12
<i>Previews</i>	24
<i>Color Blindness Simulation</i>	28
<i>CSS Examples</i>	31

Color

**XYZ(20.8201, 18.8558,
9.5634)**

Conversions

Conversions Part 1

Format	Color
Hex	9D6E4D
RGB	157, 110, 77
RGB Percent	62%, 43%, 30%
CMY	0.3843, 0.5686, 0.6980
CMYK	0.00, 0.30, 0.51, 0.38
HSL	25°, 34%, 46%
HSV	25°, 51%, 62%
XYZ	20.8201, 18.8558, 9.5634
YIQ	120.2910, 38.6050, -0.2990

Conversions

Conversions Part 2

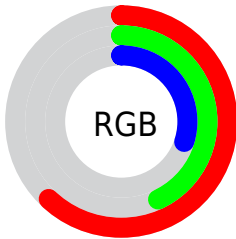
Format	Color
RYB	157, 133, 77
Decimal	10317389
CIELab	50.52, 14.69, 25.78
CIELCh	51, 29.675, 60.328
Yxy	18.8558, 0.4228, 0.3829
Android (android.graphics.Color)	4288507469 (0xFF9D6E4D)
YUV	120.2910, -21.3425, 32.1938
Hunter-Lab	43.4233, 9.5945, 17.3384

Details

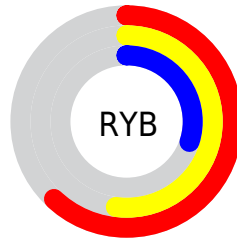
The XYZ color **20.8201, 18.8558, 9.5634** is a dark color, and the websafe version is hex **996633**. A complement of this color would be **16.3536, 18.4265, 34.5929**, and the grayscale version is **18.0038, 18.9414, 20.6272**.

A 20% lighter version of the original color is **44.4178, 41.6432, 25.4355**, and **7.5769, 6.4331, 2.2089** is the 20% darker color. If you saturate the color by 10%, you get **19.3875, 16.7732, 6.6733**, and if you desaturate by 10%, it is **22.4910, 21.2009, 13.1935**.

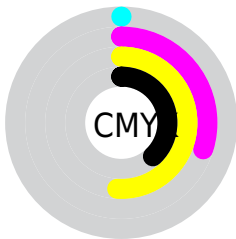
Distribution



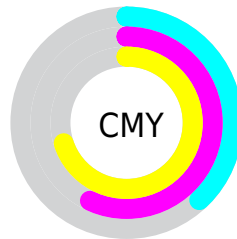
- Red (62%)
- Green (43%)
- Blue (30%)



- Red (62%)
- Yellow (52%)
- Blue (30%)



- Cyan (0%)
- Magenta (30%)
- Yellow (51%)
- Black (38%)



- Cyan (38%)
- Magenta (57%)
- Yellow (70%)

Brightness & Saturation Gradients

These gradients show how the XYZ color 20.8201, 18.8558, 9.5634 changes by changing the brightness by 10 percent. The first figure shows a shift by +10% for each color and the second figure -10%.

Similar to the brightness gradients but the following saturation gradients show a change of the XYZ color 20.8201, 18.8558, 9.5634 by changing the saturation by 10% instead.

■ 20.8201, 18.8558,
9.5634

■ 20.8201, 18.8558,
9.5634

249.0707,
245.6515, 197.8972

■ 13.1043, 11.5661,
5.0087

■ 44.2815, 41.4903,
25.5658

■ 7.5779, 6.4490,
2.1935

■ 60.7577, 57.6039,
37.8506

■ 3.8756, 3.1200,
0.6706

■ 80.8849, 77.4276,
53.5492

■ 1.6320, 1.1947,
0.0000

■ 105.0282,
101.3458, 73.0800

■ 0.4131, 0.0574,
0.0000

■ 133.5531,
129.7429, 96.8617

■ 0.0000, 0.0000,
0.0000

166.8249,

163.0033, 125.3128

205.2090,
201.5114, 158.8517

■ 20.8201, 18.8558,
9.5634

■ 20.8201, 18.8558,
9.5634

■ 19.3875, 16.7732,
6.6733

■ 22.4910, 21.2009,
13.1935

■ 18.1789, 14.9402,
4.4694

■ 24.4108, 23.8154,
17.6098

■ 17.1803, 13.3466,
2.8924

■ 26.5907, 26.7092,
22.8563

■ 16.3751, 11.9802,
1.8720

■ 29.0411, 29.8909,
28.9730

■ 15.7817, 10.9223,
1.2764

■ 31.7716, 33.3685,
35.9977

■ 34.7914, 37.1499,
43.9656

■ 38.1091, 41.2426,
52.9102

■ 41.7331, 45.6539,
62.8634

■ 45.6713, 50.3906,
73.8556

Harmonies

Analogous

The Analogous color harmony consists of three colors that are next to each other on the color wheel.



23.1669, 18.8558, 13.4890



20.8201, 18.8558, 9.5634



17.8900, 18.8558, 8.3620

Triad

The Triadic color harmony groups three colors that are evenly spaced from another and form a triangle on the color wheel.



20.8201, 18.8558, 9.5634



12.9133, 18.8558, 20.6222



20.8812, 18.8558, 37.5875

Complementary

The Complementary color scheme is a pair of colors which are on the opposite of each other on the color wheel.



20.8201, 18.8558, 9.5634



16.3536, 18.4265, 34.5929

Split Complementary

Split-complementary colors differ from the complementary color scheme. The scheme consists of three colors, the original color and two neighbors of the complement color.



17.9538, 18.8558, 40.9465



20.8201, 18.8558, 9.5634



13.5350, 18.8558, 29.6754

Square

The Square scheme is like the rectangle color scheme, but the four colors are evenly spaced on the color wheel.



20.8201, 18.8558, 9.5634



13.5086, 18.8558, 13.6089



15.3059, 18.8558, 37.7244



23.2048, 18.8558, 29.4736

Rectangle

The Rectangle color scheme consists of four colors that form a rectangle on the color wheel.



20.8201, 18.8558, 9.5634



16.0574, 18.8558, 8.9192



15.3059, 18.8558, 37.7244



19.9254, 18.8558, 39.3943

Sweetspot

The Sweet Spot groups the original color and five complimentary colors.



20.8206, 18.8567, 9.5638



50.0474, 50.9979, 46.9442



20.2602, 13.9567, 21.0282



10.8251, 10.9781, 9.8622



74.8435, 78.7412, 85.7492



12.6291, 13.2868, 14.4694

Same Dimension

The Same Dimension uses a secret algorithm to generate beautiful new colors.



20.8206, 18.8567, 9.5638



34.4361, 29.6152, 11.4058



25.9916, 29.1987, 11.2874



6.8466, 7.0732, 6.9901



12.8525, 8.9407, 1.0483



0.2704, 0.2411, 0.0323

Inverse Universe

The Inverse Universe completely reimagines the original color for something new.



16.3536, 18.4265, 34.5929



25.5064, 28.7181, 61.3256



12.3950, 10.5093, 33.2733



6.5922, 7.0502, 8.4201



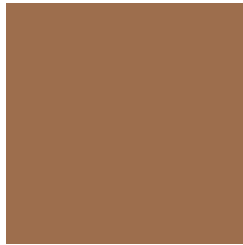
8.1044, 8.3004, 27.0822



0.1859, 0.2305, 0.4979

Previews

White Background



This preview shows how the XYZ color 20.8201, 18.8558, 9.5634 looks on a white background.

Color Contrast Check

Large Text (above 18pt) WCAG AA ✓ Pass

Any Text WCAG AA × Fail

Large Text (above 18pt) WCAG AAA × Fail

Any Text WCAG AAA × Fail

Black Background



This preview shows how the XYZ color 20.8201, 18.8558, 9.5634 looks on a black background.

Color Contrast Check

Large Text (above 18pt) WCAG AA ✓ Pass

Any Text WCAG AA ✓ Pass

Large Text (above 18pt) WCAG AAA ✓ Pass

Any Text WCAG AAA × Fail

If you want to check with other color combinations, try the [Color Contrast Checker](#).

XYZ 20.8201, 18.8558, 9.5634

Background



This preview shows how black text looks on a background with the XYZ color 20.8201, 18.8558, 9.5634.



This preview shows how white text looks on a background with the XYZ color 20.8201, 18.8558,

9.5634.

Color Blindness Simulation

Color vision deficiency is a very complex topic, and I could not describe the different causes any better than Wikipedia does, so if you want to learn more, you should check out their [article about color blindness](#).

Dichromacy



Original Color

20.8201, 18.8558, 9.5634

Protanopia

17.6826, 19.0941, 10.5381

Deuteranopia

19.2893, 18.8943, 9.4678



Tritanopia

22.5294, 18.7690, 18.0581

Trichromacy



Original Color

20.8201, 18.8558, 9.5634

Protanomaly

18.6245, 18.8772, 10.2515

Deuteranomaly

19.7873, 18.8161, 9.4264

Tritanomaly

21.8560, 18.8064, 14.5347

Monochromacy



Original Color

20.8201, 18.8558, 9.5634

Achromatopsia

17.8524, 18.7821, 20.4537

Achromatomaly

18.4169, 18.4768, 15.6924

CSS Examples

Text

The CSS property to change the color of the text to XYZ 20.8201, 18.8558, 9.5634 is called "color". The color property can be set on classes, ids or directly on the HTML element.

This example shows how text in the color `rgb(157, 110, 77)` looks like.

```
.text, #text, p{  
    color:rgb(157, 110, 77)  
}
```

If you want to add a text shadow in that color use the text-shadow property, you can generate a text shadow directly with our [CSS Text Shadow Generator](#).

Here you see how black text with a 4 pixel rgb(157, 110, 77) colored shadow looks like.

```
.shadow{ text-shadow: 4px 4px 2px rgb(157, 110, 77) }
```

Border

The CSS property to change the border of an element to XYZ 20.8201, 18.8558, 9.5634 is called "border". The border property can be set on classes, ids or directly on the HTML element.

This example shows the color as border, it can be applied via the CSS property "border" or "border-color".

```
.border, #border, table{ border:4px solid rgb(157, 110, 77) }
```


If only the border color should be changed use the property `border-color`.

```
.border{ border-color:rgb(157, 110, 77) }
```

If you want to add a box shadow in that color use:

Here you see how a box with a 4 pixel `rgb(157, 110, 77)` colored shadow looks like.

```
.boxshadow{ -moz-box-shadow:4px 4px 4px  
4px rgb(157, 110, 77); -webkit-box-  
shadow:4px 4px 4px 4px rgb(157, 110, 77);  
box-shadow:4px 4px 4px 4px rgb(157, 110,  
77) }
```

Background

The CSS property to change the background color of an element to XYZ 20.8201, 18.8558, 9.5634 is called "background". The background property can be set on classes, ids or directly on the HTML element.

```
.background, #background, body{  
background: rgb(157, 110, 77) }
```

If only the background color should be changed can be used:

```
.background{ background-color: rgb(157,  
110, 77) }
```

This example shows the color as background, it is applied via the CSS property "background".

To optimize and compress your CSS code, you can use our [online CSS compressor and optimizer](#) based on csstidy. If you want to create a linear or radial gradient as background or border, check our [CSS Gradient Generator](#).

Hey! You found this booklet interesting? Support Converting Colors with the new Membership Option!

The pro membership hides all ads, plus gives you double the colors in the color bucket, and more awesome pro features!

[Learn more, Memberships starting at \\$2.50/m!](#)

**Follow me
on Twitter!**

@ConvertingColor