

Converting Colors

XYZ(20.8812, 18.1539, 7.8317)

Have a look what the booklet for
XYZ(20.8812, 18.1539, 7.8317)
contains.

XYZ(20.7929, 18.0976, 7.8661)	3
<i>Conversions</i>	4
<i>Details</i>	6
<i>Harmonies</i>	12
<i>Previews</i>	24
<i>Color Blindness Simulation</i>	28
<i>CSS Examples</i>	31

Color

**XYZ(20.7929, 18.0976,
7.8661)**

Conversions

Conversions Part 1

Format	Color
Hex	A16944
RGB	161, 105, 68
RGB Percent	63%, 41%, 27%
CMY	0.3686, 0.5882, 0.7333
CMYK	0.00, 0.35, 0.58, 0.37
HSL	24°, 41%, 45%
HSV	24°, 58%, 63%
XYZ	20.7929, 18.0976, 7.8661
YIQ	117.5260, 45.2530, 0.3650

Conversions

Conversions Part 2

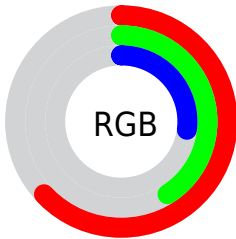
Format	Color
R_{YB}	161, 129, 68
Decimal	10578244
CIE _{Lab}	49.61, 18.45, 29.83
CIE _{LCh}	50, 35.078, 58.258
Yxy	18.0976, 0.4447, 0.3871
Android (android.graphics.Color)	4288768324 (0xFFA16944)
YUV	117.5260, -24.4163, 38.1267
Hunter-Lab	42.5413, 12.7982, 18.8159

Details

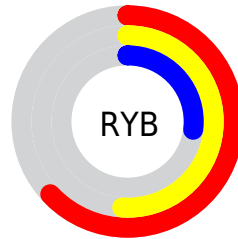
The XYZ color **20.7929, 18.0976, 7.8661** is a dark color, and the websafe version is hex **996633**. A complement of this color would be **16.0241, 18.2164, 36.3896**, and the grayscale version is **17.1361, 18.0285, 19.6331**.

A 20% lighter version of the original color is **44.0128, 39.9667, 22.2242**, and **7.5616, 6.0523, 1.5803** is the 20% darker color. If you saturate the color by 10%, you get **19.4357, 16.0646, 5.3135**, and if you desaturate by 10%, it is **22.3985, 20.4115, 11.1676**.

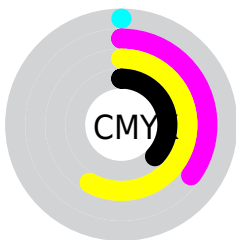
Distribution



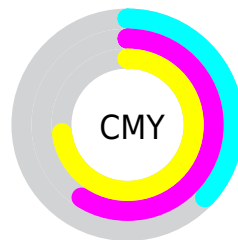
- Red (63%)
- Green (41%)
- Blue (27%)



- Red (63%)
- Yellow (51%)
- Blue (27%)



- Cyan (0%)
- Magenta (35%)
- Yellow (58%)
- Black (37%)



- Cyan (37%)
- Magenta (59%)
- Yellow (73%)

Brightness & Saturation Gradients

These gradients show how the XYZ color 20.7929, 18.0976, 7.8661 changes by changing the brightness by 10 percent. The first figure shows a shift by +10% for each color and the second figure -10%.

Similar to the brightness gradients but the following saturation gradients show a change of the XYZ color 20.7929, 18.0976, 7.8661 by changing the saturation by 10% instead.

■ 20.7929, 18.0976,
7.8661

■ 20.7929, 18.0976,
7.8661

248.9284,
241.4206, 184.5732

■ 13.0843, 11.0201,
3.9228

■ 44.2365, 40.2036,
22.2373

■ 7.5640, 6.0803,
1.5831

■ 60.7022, 56.0008,
33.5024

■ 3.8667, 2.8940,
0.2787

■ 80.8176, 75.4734,
48.0452

■ 1.6270, 1.0766,
0.0000

■ 104.9482, 99.0057,
66.2842

■ 0.4099, 0.0000,
0.0000

■ 133.4592,
126.9822, 88.6379

■ 0.0000, 0.0000,
0.0000

166.7160,

159.7873, 115.5250

205.0839,
197.8053, 147.3639

■ 20.7929, 18.0976,
7.8661

■ 20.7929, 18.0976,
7.8661

■ 19.4357, 16.0646,
5.3135

■ 22.3985, 20.4115,
11.1676

■ 18.3106, 14.2978,
3.4479

■ 24.2648, 23.0149,
15.2711

■ 17.4006, 12.7848,
2.1986

■ 26.4048, 25.9191,
20.2261

■ 16.6792, 11.5082,
1.4456

■ 28.8302, 29.1340,
26.0778

■ 16.5347, 11.2507,
1.3001

■ 31.5519, 32.6690,
32.8681

■ 34.5801, 36.5332,
40.6361

■ 37.9247, 40.7351,
49.4191

■ 41.5950, 45.2830,
59.2519

■ 45.5999, 50.1850,
70.1680

Harmonies

Analogous

The Analogous color harmony consists of three colors that are next to each other on the color wheel.



23.4771, 18.0976, 12.2386



20.7929, 18.0976, 7.8661



17.3965, 18.0976, 6.4754

Triad

The Triadic color harmony groups three colors that are evenly spaced from another and form a triangle on the color wheel.



20.7929, 18.0976, 7.8661



11.5642, 18.0976, 19.1532



20.4128, 18.0976, 40.6619

Complementary

The Complementary color scheme is a pair of colors which are on the opposite of each other on the color wheel.



20.7929, 18.0976, 7.8661



16.0241, 18.2164, 36.3896

Split Complementary

Split-complementary colors differ from the complementary color scheme. The scheme consists of three colors, the original color and two neighbors of the complement color.



17.0074, 18.0976, 44.2918



20.7929, 18.0976, 7.8661



12.1571, 18.0976, 29.7197

Square

The Square scheme is like the rectangle color scheme, but the four colors are evenly spaced on the color wheel.



20.7929, 18.0976, 7.8661



12.3122, 18.0976, 11.5494



14.0490, 18.0976, 39.7654



23.2385, 18.0976, 31.0072

Rectangle

The Rectangle color scheme consists of four colors that form a rectangle on the color wheel.



20.7929, 18.0976, 7.8661



15.2729, 18.0976, 6.9206



14.0490, 18.0976, 39.7654



19.2853, 18.0976, 42.7413

Sweetspot

The Sweet Spot groups the original color and five complimentary colors.



20.7933, 18.0985, 7.8664



51.8378, 52.4456, 47.2072



20.4891, 13.2010, 20.9877



11.1828, 11.2579, 9.8974



76.7382, 80.7346, 87.9200



13.3056, 13.9985, 15.2444

Same Dimension

The Same Dimension uses a secret algorithm to generate beautiful new colors.



20.7933, 18.0985, 7.8664



34.2594, 27.9248, 8.5582



26.6715, 29.8549, 9.8258



7.2942, 7.5269, 7.4485



13.2435, 9.0610, 1.0509



0.3237, 0.2813, 0.0372

Inverse Universe

The Inverse Universe completely reimagines the original color for something new.



16.0241, 18.2164, 36.3896



24.8675, 28.0828, 64.4964



11.6022, 9.3727, 34.9156



7.0385, 7.5359, 8.9867



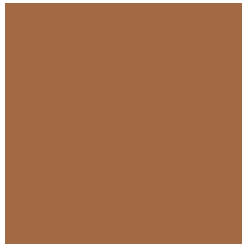
8.5880, 8.9554, 28.2057



0.2248, 0.2768, 0.6074

Previews

White Background



This preview shows how the XYZ color 20.7929, 18.0976, 7.8661 looks on a white background.

Color Contrast Check

Large Text (above 18pt) WCAG AA ✓ Pass

Any Text WCAG AA ✓ Pass

Large Text (above 18pt) WCAG AAA ✓ Pass

Any Text WCAG AAA × Fail

Black Background



This preview shows how the XYZ color 20.7929, 18.0976, 7.8661 looks on a black background.

Color Contrast Check

Large Text (above 18pt) WCAG AA ✓ Pass

Any Text WCAG AA ✓ Pass

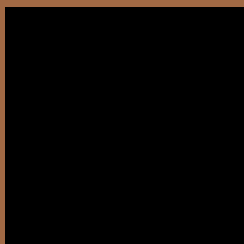
Large Text (above 18pt) WCAG AAA ✓ Pass

Any Text WCAG AAA × Fail

If you want to check with other color combinations, try the [Color Contrast Checker](#).

XYZ 20.7929, 18.0976, 7.8661

Background



This preview shows how black text looks on a background with the XYZ color 20.7929, 18.0976, 7.8661.



This preview shows how white text looks on a background with the XYZ color 20.7929, 18.0976,

Color Blindness Simulation

Color vision deficiency is a very complex topic, and I could not describe the different causes any better than Wikipedia does, so if you want to learn more, you should check out their [article about color blindness](#).

Dichromacy



Original Color

20.7929, 18.0976, 7.8661

Protanopia

16.7343, 18.1050, 8.9160

Deuteranopia

18.3901, 18.1329, 7.6850



Tritanopia

22.5738, 18.0896, 16.4892

Trichromacy



Original Color

20.7929, 18.0976, 7.8661

Protanomaly

18.0270, 17.9279, 8.4715

Deuteranomaly

19.1667, 18.0411, 7.7823

Tritanomaly

21.8314, 18.0796, 12.6950

Monochromacy



Original Color

20.7929, 18.0976, 7.8661

Achromatopsia

17.2197, 18.1164, 19.7288

Achromatomaly

18.0369, 17.7987, 14.5414

CSS Examples

Text

The CSS property to change the color of the text to XYZ 20.7929, 18.0976, 7.8661 is called "color". The color property can be set on classes, ids or directly on the HTML element.

This example shows how text in the color `rgb(161, 105, 68)` looks like.

```
.text, #text, p{  
    color:rgb(161, 105, 68)  
}
```

If you want to add a text shadow in that color use the text-shadow property, you can generate a text shadow directly with our [CSS Text Shadow Generator](#).

Here you see how black text with a 4 pixel rgb(161, 105, 68) colored shadow looks like.

```
.shadow{ text-shadow: 4px 4px 2px rgb(161, 105, 68) }
```

Border

The CSS property to change the border of an element to XYZ 20.7929, 18.0976, 7.8661 is called "border". The border property can be set on classes, ids or directly on the HTML element.

This example shows the color as border, it can be applied via the CSS property "border" or "border-color".

```
.border, #border, table{ border:4px solid rgb(161, 105, 68) }
```


If only the border color should be changed use the property `border-color`.

```
.border{ border-color:rgb(161, 105, 68) }
```

If you want to add a box shadow in that color use:

Here you see how a box with a 4 pixel `rgb(161, 105, 68)` colored shadow looks like.

```
.boxshadow{ -moz-box-shadow:4px 4px 4px  
4px rgb(161, 105, 68); -webkit-box-  
shadow:4px 4px 4px 4px rgb(161, 105, 68);  
box-shadow:4px 4px 4px 4px rgb(161, 105,  
68) }
```

Background

The CSS property to change the background color of an element to XYZ 20.7929, 18.0976, 7.8661 is called "background". The background property can be set on classes, ids or directly on the HTML element.

```
.background, #background, body{  
background: rgb(161, 105, 68) }
```

If only the background color should be changed can be used:

```
.background{ background-color: rgb(161,  
105, 68) }
```

This example shows the color as background, it is applied via the CSS property "background".

To optimize and compress your CSS code, you can use our [online CSS compressor and optimizer](#) based on csstidy. If you want to create a linear or radial gradient as background or border, check our [CSS Gradient Generator](#).

Hey! You found this booklet interesting? Support Converting Colors with the new Membership Option!

The pro membership hides all ads, plus gives you double the colors in the color bucket, and more awesome pro features!

[Learn more, Memberships starting at \\$2.50/m!](#)

**Follow me
on Twitter!**

@ConvertingColor