

Converting Colors

XYZ(20.9122, 20.2629, 15.1774)

Have a look what the booklet for
XYZ(20.9122, 20.2629, 15.1774)
contains.

XYZ(20.9784, 20.3363, 15.1315)	3
<i>Conversions</i>	4
<i>Details</i>	6
<i>Harmonies</i>	12
<i>Previews</i>	24
<i>Color Blindness Simulation</i>	28
<i>CSS Examples</i>	31

Color

**XYZ(20.9784, 20.3363,
15.1315)**

Conversions

Conversions Part 1

Format	Color
Hex	937765
RGB	147, 119, 101
RGB Percent	58%, 47%, 40%
CMY	0.4235, 0.5333, 0.6039
CMYK	0.00, 0.19, 0.31, 0.42
HSL	23°, 19%, 49%
HSV	23°, 31%, 58%
XYZ	20.9784, 20.3363, 15.1315
YIQ	125.3200, 22.4660, 0.3380

Conversions

Conversions Part 2

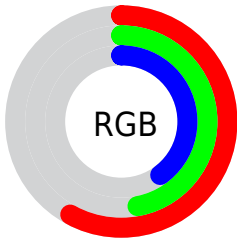
Format	Color
R_{YB}	147, 131, 101
Decimal	9664357
CIE _{Lab}	52.22, 8.14, 14.02
CIE _{LCh}	52, 16.208, 59.869
Yxy	20.3363, 0.3717, 0.3603
Android (android.graphics.Color)	4287854437 (0xFF937765)
YUV	125.3200, -11.9898, 19.0134
Hunter-Lab	45.0958, 4.1199, 11.6728

Details

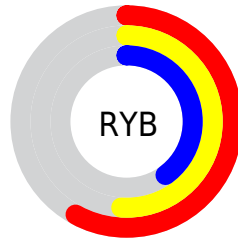
The XYZ color **20.9784, 20.3363, 15.1315** is a dark color, and the websafe version is hex **996666**. A complement of this color would be **18.4832, 20.5730, 30.6006**, and the grayscale version is **19.6352, 20.6577, 22.4963**.

A 20% lighter version of the original color is **44.5875, 43.9494, 35.8388**, and **7.6384, 7.2057, 4.4783** is the 20% darker color. If you saturate the color by 10%, you get **19.3066, 18.0440, 11.3331**, and if you desaturate by 10%, it is **22.8804, 22.8825, 19.6428**.

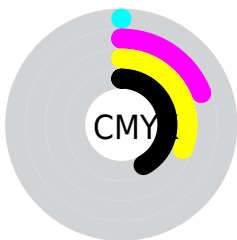
Distribution



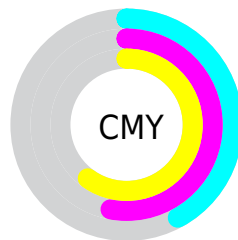
- Red (58%)
- Green (47%)
- Blue (40%)



- Red (58%)
- Yellow (51%)
- Blue (40%)



- Cyan (0%)
- Magenta (19%)
- Yellow (31%)
- Black (42%)



- Cyan (42%)
- Magenta (53%)
- Yellow (60%)

Brightness & Saturation Gradients

These gradients show how the XYZ color 20.9784, 20.3363, 15.1315 changes by changing the brightness by 10 percent. The first figure shows a shift by +10% for each color and the second figure -10%.

Similar to the brightness gradients but the following saturation gradients show a change of the XYZ color 20.9784, 20.3363, 15.1315 by changing the saturation by 10% instead.

■ 20.9784, 20.3363,
15.1315

■ 20.9784, 20.3363,
15.1315

249.8976,
253.7299, 235.8289

■ 13.2206, 12.6397,
8.7641

■ 44.5431, 43.9803,
35.8293

■ 7.6587, 7.1809,
4.4929

■ 61.0808, 60.6965,
50.9967

■ 3.9273, 3.5755,
1.8995

■ 81.2757, 81.1881,
69.9345

■ 1.6611, 1.4391,
0.4924

■ 105.4933,
105.8394, 93.0613

■ 0.4317, 0.2453,
0.0000

134.0989,
135.0349, 120.7956

■ 0.0000, 0.0000,
0.0000

167.4580,

169.1588, 153.5560

205.9357,
208.5957, 191.7609

■ 20.9784, 20.3363,
15.1315

■ 20.9784, 20.3363,
15.1315

■ 19.3066, 18.0440,
11.3331

■ 22.8804, 22.8825,
19.6428

■ 17.8538, 15.9946,
8.2091

■ 25.0199, 25.6877,
24.9000

■ 16.6100, 14.1802,
5.7195

■ 27.4061, 28.7603,
30.9357

■ 15.5640, 12.5914,
3.8195

■ 30.0470, 32.1073,
37.7801

■ 14.7032, 11.2182,
2.4579

■ 32.9501, 35.7357,
45.4619

■ 14.0129, 10.0494,
1.5752

■ 36.1229, 39.6521,
54.0083

■ 13.5222, 9.1822,
1.0597

■ 39.5723, 43.8629,
63.4451

■ 43.3052, 48.3743,
73.7974

■ 47.3280, 53.1921,
85.0890

Harmonies

Analogous

The Analogous color harmony consists of three colors that are next to each other on the color wheel.



22.2355, 20.3363, 17.8895



20.9784, 20.3363, 15.1315



19.3364, 20.3363, 14.1920

Triad

The Triadic color harmony groups three colors that are evenly spaced from another and form a triangle on the color wheel.



20.9784, 20.3363, 15.1315



16.3056, 20.3363, 22.1219



20.9650, 20.3363, 31.0676

Complementary

The Complementary color scheme is a pair of colors which are on the opposite of each other on the color wheel.



20.9784, 20.3363, 15.1315



18.4832, 20.5730, 30.6006

Split Complementary

Split-complementary colors differ from the complementary color scheme. The scheme consists of three colors, the original color and two neighbors of the complement color.



19.3217, 20.3363, 32.6166



20.9784, 20.3363, 15.1315



16.6876, 20.3363, 27.0219

Square

The Square scheme is like the rectangle color scheme, but the four colors are evenly spaced on the color wheel.



20.9784, 20.3363, 15.1315



16.6942, 20.3363, 17.8580



17.7685, 20.3363, 31.0414



22.2275, 20.3363, 27.0633

Rectangle

The Rectangle color scheme consists of four colors that form a rectangle on the color wheel.



20.9784, 20.3363, 15.1315



18.2629, 20.3363, 14.6010



17.7685, 20.3363, 31.0414



20.4359, 20.3363, 31.9163

Sweetspot

The Sweet Spot groups the original color and five complimentary colors.



20.9789, 20.3372, 15.1319



45.6704, 47.1222, 46.7520



20.6733, 17.1053, 23.1091



10.2996, 10.5938, 10.3571



71.1368, 74.8414, 81.5023



11.3376, 11.9280, 12.9896

Same Dimension

The Same Dimension uses a secret algorithm to generate beautiful new colors.



20.9789, 20.3372, 15.1319



35.2897, 33.3037, 21.8875



24.0002, 26.3798, 16.1390



5.9759, 6.1655, 6.1156



11.7458, 8.0061, 0.9263



0.1710, 0.1525, 0.0204

Inverse Universe

The Inverse Universe completely reimagines the original color for something new.



18.4832, 20.5730, 30.6006



30.0439, 33.7903, 54.3733



15.8254, 15.2573, 29.7146



5.7755, 6.1849, 7.3591



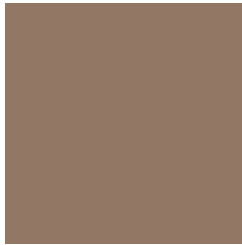
7.7211, 8.1371, 25.0947



0.1233, 0.1571, 0.3167

Previews

White Background



This preview shows how the XYZ color 20.9784, 20.3363, 15.1315 looks on a white background.

Color Contrast Check

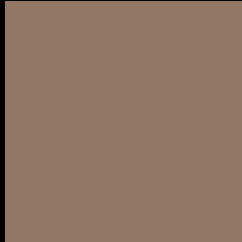
Large Text (above 18pt) WCAG AA ✓ Pass

Any Text WCAG AA × Fail

Large Text (above 18pt) WCAG AAA × Fail

Any Text WCAG AAA × Fail

Black Background



This preview shows how the XYZ color 20.9784, 20.3363, 15.1315 looks on a black background.

Color Contrast Check

Large Text (above 18pt) WCAG AA ✓ Pass

Any Text WCAG AA ✓ Pass

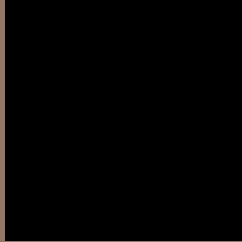
Large Text (above 18pt) WCAG AAA ✓ Pass

Any Text WCAG AAA × Fail

If you want to check with other color combinations, try the [Color Contrast Checker](#).

XYZ 20.9784, 20.3363, 15.1315

Background



This preview shows how black text looks on a background with the XYZ color 20.9784, 20.3363, 15.1315.



This preview shows how white text looks on a background with the XYZ color 20.9784, 20.3363,

Color Blindness Simulation

Color vision deficiency is a very complex topic, and I could not describe the different causes any better than Wikipedia does, so if you want to learn more, you should check out their [article about color blindness](#).

Dichromacy



Original Color

20.9784, 20.3363, 15.1315

Protanopia

19.2221, 20.3203, 16.0058

Deuteranopia

20.7425, 20.3923, 15.1548



Tritanopia

22.5247, 20.4555, 22.1632

Trichromacy



Original Color

20.9784, 20.3363, 15.1315

Protanomaly

19.7242, 20.2167, 15.6946

Deuteranomaly

20.9195, 20.4835, 15.1631

Tritanomaly

21.9081, 20.3731, 19.3007

Monochromacy



Original Color

20.9784, 20.3363, 15.1315

Achromatopsia

19.4927, 20.5079, 22.3331

Achromatomaly

19.9082, 20.4134, 19.4139

CSS Examples

Text

The CSS property to change the color of the text to XYZ 20.9784, 20.3363, 15.1315 is called "color". The color property can be set on classes, ids or directly on the HTML element.

This example shows how text in the color `rgb(147, 119, 101)` looks like.

```
.text, #text, p{  
    color:rgb(147, 119, 101)  
}
```

If you want to add a text shadow in that color use the text-shadow property, you can generate a text shadow directly with our [CSS Text Shadow Generator](#).

Here you see how black text with a 4 pixel rgb(147, 119, 101) colored shadow looks like.

```
.shadow{ text-shadow: 4px 4px 2px rgb(147, 119, 101) }
```

Border

The CSS property to change the border of an element to XYZ 20.9784, 20.3363, 15.1315 is called "border". The border property can be set on classes, ids or directly on the HTML element.

This example shows the color as border, it can be applied via the CSS property "border" or "border-color".

```
.border, #border, table{ border:4px solid rgb(147, 119, 101) }
```


If only the border color should be changed use the property `border-color`.

```
.border{ border-color:rgb(147, 119, 101) }
```

If you want to add a box shadow in that color use:

Here you see how a box with a 4 pixel `rgb(147, 119, 101)` colored shadow looks like.

```
.boxshadow{ -moz-box-shadow:4px 4px 4px  
4px rgb(147, 119, 101); -webkit-box-  
shadow:4px 4px 4px 4px rgb(147, 119, 101);  
box-shadow:4px 4px 4px 4px rgb(147, 119,  
101) }
```

Background

The CSS property to change the background color of an element to XYZ 20.9784, 20.3363, 15.1315 is called "background". The background property can be set on classes, ids or directly on the HTML element.

```
.background, #background, body{  
background: rgb(147, 119, 101) }
```

If only the background color should be changed can be used:

```
.background{ background-color: rgb(147,  
119, 101) }
```

This example shows the color as background, it is applied via the CSS property "background".

To optimize and compress your CSS code, you can use our [online CSS compressor and optimizer](#) based on csstidy. If you want to create a linear or radial gradient as background or border, check our [CSS Gradient Generator](#).

Hey! You found this booklet interesting? Support Converting Colors with the new Membership Option!

The pro membership hides all ads, plus gives you double the colors in the color bucket, and more awesome pro features!

[Learn more, Memberships starting at \\$2.50/m!](#)

**Follow me
on Twitter!**

@ConvertingColor