

Converting Colors

XYZ(20.9672, 20.3526, 14.1326)

Have a look what the booklet for
XYZ(20.9672, 20.3526, 14.1326)
contains.

XYZ(20.9672, 20.3526, 14.1326)	3
<i>Conversions</i>	4
<i>Details</i>	6
<i>Harmonies</i>	12
<i>Previews</i>	24
<i>Color Blindness Simulation</i>	28
<i>CSS Examples</i>	31

Color

**XYZ(20.9672, 20.3526,
14.1326)**

Conversions

Conversions Part 1

Format	Color
Hex	947761
RGB	148, 119, 97
RGB Percent	58%, 47%, 38%
CMY	0.4196, 0.5333, 0.6196
CMYK	0.00, 0.20, 0.34, 0.42
HSL	26°, 21%, 48%
HSV	26°, 34%, 58%
XYZ	20.9672, 20.3526, 14.1326
YIQ	125.1630, 24.3460, -0.6940

Conversions

Conversions Part 2

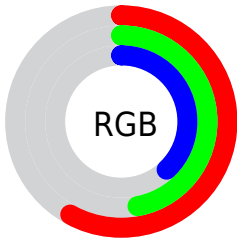
Format	Color
R_{YB}	148, 136, 97
Decimal	9729889
CIE _{Lab}	52.23, 8.00, 16.38
CIE _{LCh}	52, 18.232, 63.960
Yxy	20.3526, 0.3781, 0.3670
Android (android.graphics.Color)	4287919969 (0xFF947761)
YUV	125.1630, -13.8844, 20.0280
Hunter-Lab	45.1139, 4.0107, 13.0062

Details

The XYZ color **20.9672, 20.3526, 14.1326** is a dark color, and the websafe version is hex **996666**. A complement of this color would be **17.7356, 19.6005, 30.8654**, and the grayscale version is **19.5879, 20.6080, 22.4421**.

A 20% lighter version of the original color is **44.5368, 43.9604, 34.1548**, and **7.6528, 7.2236, 4.0086** is the 20% darker color. If you saturate the color by 10%, you get **19.3831, 18.1876, 10.5118**, and if you desaturate by 10%, it is **22.7698, 22.7484, 18.4620**.

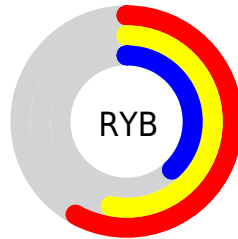
Distribution



Red (58%)

Green (47%)

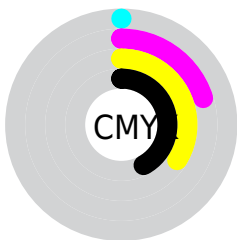
Blue (38%)



Red (58%)

Yellow (53%)

Blue (38%)

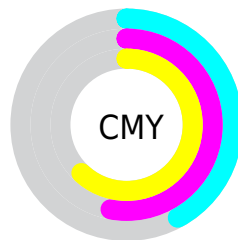


Cyan (0%)

Magenta (20%)

Yellow (34%)

Black (42%)



Cyan (42%)

Magenta (53%)

Yellow (62%)

Brightness & Saturation Gradients

These gradients show how the XYZ color 20.9672, 20.3526, 14.1326 changes by changing the brightness by 10 percent. The first figure shows a shift by +10% for each color and the second figure -10%.

Similar to the brightness gradients but the following saturation gradients show a change of the XYZ color 20.9672, 20.3526, 14.1326 by changing the saturation by 10% instead.

■ 20.9672, 20.3526,
14.1326

■ 20.9672, 20.3526,
14.1326

249.8391,
253.8176, 229.5112

■ 13.2124, 12.6516,
8.0731

■ 44.5246, 44.0076,
34.0446

■ 7.6529, 7.1891,
4.0533

■ 61.0579, 60.7303,
48.7343

■ 3.9236, 3.5806,
1.6547

■ 81.2481, 81.2291,
67.1378

■ 1.6590, 1.4419,
0.3294

■ 105.4604,
105.8884, 89.6736

■ 0.4304, 0.2473,
0.0000

134.0604,
135.0924, 116.7603

■ 0.0000, 0.0000,
0.0000

167.4132,

169.2257, 148.8165

205.8844,
208.6727, 186.2606

■ 20.9672, 20.3526,
14.1326

■ 20.9672, 20.3526,
14.1326

■ 19.3831, 18.1876,
10.5118

■ 22.7698, 22.7484,
18.4620

■ 18.0065, 16.2430,
7.5597

■ 24.7982, 25.3792,
23.5343

■ 16.8276, 14.5120,
5.2344

■ 27.0612, 28.2527,
29.3830

■ 15.8351, 12.9860,
3.4889

■ 29.5666, 31.3752,
36.0395

■ 15.0164, 11.6558,
2.2690

■ 32.3219, 34.7530,
43.5330

■ 14.3561, 10.5108,
1.5076

■ 35.3342, 38.3920,
51.8916

■ 14.0378, 9.9461,
1.1799

■ 38.6103, 42.2979,
61.1419

■ 42.1568, 46.4763,
71.3093

■ 45.9799, 50.9325,
82.4185

Harmonies

Analogous

The Analogous color harmony consists of three colors that are next to each other on the color wheel.



22.4844, 20.3526, 16.8890



20.9672, 20.3526, 14.1326



19.0972, 20.3526, 13.3894

Triad

The Triadic color harmony groups three colors that are evenly spaced from another and form a triangle on the color wheel.



20.9672, 20.3526, 14.1326



15.9730, 20.3526, 22.8797



21.4245, 20.3526, 31.8516

Complementary

The Complementary color scheme is a pair of colors which are on the opposite of each other on the color wheel.



20.9672, 20.3526, 14.1326



17.7356, 19.6005, 30.8654

Split Complementary

Split-complementary colors differ from the complementary color scheme. The scheme consists of three colors, the original color and two neighbors of the complement color.



19.5940, 20.3526, 34.1099



20.9672, 20.3526, 14.1326



16.5115, 20.3526, 28.4285

Square

The Square scheme is like the rectangle color scheme, but the four colors are evenly spaced on the color wheel.



20.9672, 20.3526, 14.1326



16.2889, 20.3526, 17.9383



17.8078, 20.3526, 32.7664



22.7602, 20.3526, 26.9982

Rectangle

The Rectangle color scheme consists of four colors that form a rectangle on the color wheel.



20.9672, 20.3526, 14.1326



17.9201, 20.3526, 14.0158



17.8078, 20.3526, 32.7664



20.8426, 20.3526, 32.9720

Sweetspot

The Sweet Spot groups the original color and five complimentary colors.



20.9677, 20.3535, 14.1330



45.4045, 46.8868, 45.7497



20.3020, 16.3713, 22.0834



10.2502, 10.5572, 10.1486



71.1368, 74.8414, 81.5023



11.3376, 11.9280, 12.9896

Same Dimension

The Same Dimension uses a secret algorithm to generate beautiful new colors.



20.9677, 20.3535, 14.1330



34.9024, 33.0616, 20.1168



24.3059, 27.0298, 15.2457



5.9943, 6.2023, 6.1217



12.0167, 8.5479, 1.0166



0.1754, 0.1614, 0.0219

Inverse Universe

The Inverse Universe completely reimagines the original color for something new.



17.7356, 19.6005, 30.8654



28.3488, 31.5288, 54.0261



14.9532, 14.0357, 29.9380



5.7567, 6.1473, 7.3529



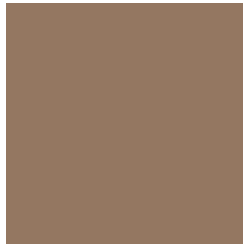
7.3109, 7.3165, 24.9579



0.1188, 0.1482, 0.3153

Previews

White Background



This preview shows how the XYZ color 20.9672, 20.3526, 14.1326 looks on a white background.

Color Contrast Check

Large Text (above 18pt) WCAG AA ✓ Pass

Any Text WCAG AA × Fail

Large Text (above 18pt) WCAG AAA × Fail

Any Text WCAG AAA × Fail

Black Background



This preview shows how the XYZ color 20.9672, 20.3526, 14.1326 looks on a black background.

Color Contrast Check

Large Text (above 18pt) WCAG AA ✓ Pass

Any Text WCAG AA ✓ Pass

Large Text (above 18pt) WCAG AAA ✓ Pass

Any Text WCAG AAA × Fail

If you want to check with other color combinations, try the [Color Contrast Checker](#).

XYZ 20.9672, 20.3526, 14.1326

Background



This preview shows how black text looks on a background with the XYZ color 20.9672, 20.3526, 14.1326.



This preview shows how white text looks on a background with the XYZ color 20.9672, 20.3526,

Color Blindness Simulation

Color vision deficiency is a very complex topic, and I could not describe the different causes any better than Wikipedia does, so if you want to learn more, you should check out their [article about color blindness](#).

Dichromacy



Original Color

20.9672, 20.3526, 14.1326

Protanopia

19.3067, 20.5739, 15.0102

Deuteranopia

20.7282, 20.4070, 14.1557



Tritanopia

22.5313, 20.2960, 21.7988

Trichromacy



Original Color

20.9672, 20.3526, 14.1326

Protanomaly

19.8163, 20.4700, 14.7111

Deuteranomaly

20.9068, 20.4991, 14.1641

Tritanomaly

21.8603, 20.1897, 18.6644

Monochromacy



Original Color

20.9672, 20.3526, 14.1326

Achromatopsia

19.4927, 20.5079, 22.3331

Achromatomaly

19.8503, 20.3903, 19.1091

CSS Examples

Text

The CSS property to change the color of the text to XYZ 20.9672, 20.3526, 14.1326 is called "color". The color property can be set on classes, ids or directly on the HTML element.

This example shows how text in the color `rgb(148, 119, 97)` looks like.

```
.text, #text, p{  
    color:rgb(148, 119, 97)  
}
```

If you want to add a text shadow in that color use the text-shadow property, you can generate a text shadow directly with our [CSS Text Shadow Generator](#).

Here you see how black text with a 4 pixel rgb(148, 119, 97) colored shadow looks like.

```
.shadow{ text-shadow: 4px 4px 2px rgb(148, 119, 97) }
```

Border

The CSS property to change the border of an element to XYZ 20.9672, 20.3526, 14.1326 is called "border". The border property can be set on classes, ids or directly on the HTML element.

This example shows the color as border, it can be applied via the CSS property "border" or "border-color".

```
.border, #border, table{ border:4px solid rgb(148, 119, 97) }
```


If only the border color should be changed use the property `border-color`.

```
.border{ border-color:rgb(148, 119, 97) }
```

If you want to add a box shadow in that color use:

Here you see how a box with a 4 pixel `rgb(148, 119, 97)` colored shadow looks like.

```
.boxshadow{ -moz-box-shadow:4px 4px 4px  
4px rgb(148, 119, 97); -webkit-box-  
shadow:4px 4px 4px 4px rgb(148, 119, 97);  
box-shadow:4px 4px 4px 4px rgb(148, 119,  
97) }
```

Background

The CSS property to change the background color of an element to XYZ 20.9672, 20.3526, 14.1326 is called "background". The background property can be set on classes, ids or directly on the HTML element.

```
.background, #background, body{  
background: rgb(148, 119, 97) }
```

If only the background color should be changed can be used:

```
.background{ background-color: rgb(148,  
119, 97) }
```

This example shows the color as background, it is applied via the CSS property "background".

To optimize and compress your CSS code, you can use our [online CSS compressor and optimizer](#) based on csstidy. If you want to create a linear or radial gradient as background or border, check our [CSS Gradient Generator](#).

Hey! You found this booklet interesting? Support Converting Colors with the new Membership Option!

The pro membership hides all ads, plus gives you double the colors in the color bucket, and more awesome pro features!

[Learn more, Memberships starting at \\$2.50/m!](#)

**Follow me
on Twitter!**

@ConvertingColor