

Converting Colors

XYZ(21.2529, 20.0884, 9.9153)

Have a look what the booklet for
XYZ(21.2529, 20.0884, 9.9153)
contains.

XYZ(21.3308, 20.1088, 9.9648)	3
<i>Conversions</i>	4
<i>Details</i>	6
<i>Harmonies</i>	12
<i>Previews</i>	24
<i>Color Blindness Simulation</i>	28
<i>CSS Examples</i>	31

Color

**XYZ(21.3308, 20.1088,
9.9648)**

Conversions

Conversions Part 1

Format	Color
Hex	9C744E
RGB	156, 116, 78
RGB Percent	61%, 45%, 31%
CMY	0.3882, 0.5451, 0.6941
CMYK	0.00, 0.26, 0.50, 0.39
HSL	29°, 33%, 46%
HSV	29°, 50%, 61%
XYZ	21.3308, 20.1088, 9.9648
YIQ	123.6280, 36.0380, -3.3380

Conversions

Conversions Part 2

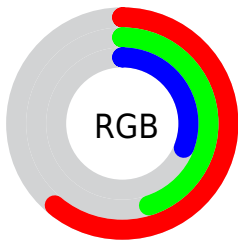
Format	Color
R_{YB}	156, 152, 78
Decimal	10253390
CIE Lab	51.96, 10.92, 27.04
CIE LCh	52, 29.164, 68.013
Yxy	20.1088, 0.4150, 0.3912
Android (android.graphics.Color)	4288443470 (0xFF9C744E)
YUV	123.6280, -22.4946, 28.3902
Hunter-Lab	44.8428, 6.4338, 18.2148

Details

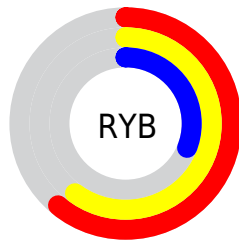
The XYZ color **21.3308, 20.1088, 9.9648** is a dark color, and the websafe version is hex **996633**. A complement of this color would be **15.6206, 16.9759, 33.9056**, and the grayscale version is **19.0989, 20.0935, 21.8818**.

A 20% lighter version of the original color is **45.0503, 43.5608, 26.4557**, and **7.8073, 7.0633, 2.3184** is the 20% darker color. If you saturate the color by 10%, you get **19.9539, 18.1464, 7.0662**, and if you desaturate by 10%, it is **22.9208, 22.2851, 13.5894**.

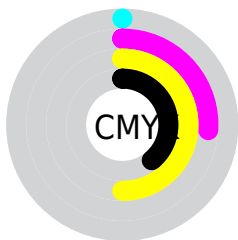
Distribution



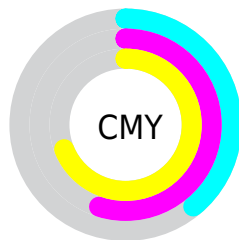
- Red (61%)
- Green (45%)
- Blue (31%)



- Red (61%)
- Yellow (60%)
- Blue (31%)



- Cyan (0%)
- Magenta (26%)
- Yellow (50%)
- Black (39%)



- Cyan (39%)
- Magenta (55%)
- Yellow (69%)

Brightness & Saturation Gradients

These gradients show how the XYZ color 21.3308, 20.1088, 9.9648 changes by changing the brightness by 10 percent. The first figure shows a shift by +10% for each color and the second figure -10%.

Similar to the brightness gradients but the following saturation gradients show a change of the XYZ color 21.3308, 20.1088, 9.9648 by changing the saturation by 10% instead.

■ 21.3308, 20.1088,
9.9648

■ 21.3308, 20.1088,
9.9648

251.7299,
252.5035, 200.8963

■ 13.4799, 12.4742,
5.2703

■ 45.1246, 43.5995,
26.3361

■ 7.8391, 7.0675,
2.3452

■ 61.7981, 60.2244,
38.8499

■ 4.0431, 3.5043,
0.7564

■ 82.1432, 80.6148,
54.8073

■ 1.7265, 1.4004,
0.0000

■ 106.5253,
105.1551, 74.6268

■ 0.4728, 0.2170,
0.0000

■ 135.3096,
134.2297, 98.7269

■ 0.0000, 0.0000,
0.0000

168.8616,

168.2231, 127.5262

207.5466,
207.5195, 161.4431

■ 21.3308, 20.1088,
9.9648

■ 21.3308, 20.1088,
9.9648

■ 19.9539, 18.1464,
7.0662

■ 22.9208, 22.2851,
13.5894

■ 18.7771, 16.3871,
4.8417

■ 24.7330, 24.6796,
17.9848

■ 17.7880, 14.8234,
3.2339

■ 26.7775, 27.3002,
23.1935

■ 16.9717, 13.4460,
2.1756

■ 29.0635, 30.1533,
29.2545

■ 16.2953, 12.2380,
1.5034

■ 31.5995, 33.2451,
36.2043

■ 16.2952, 12.2379,
1.5033

■ 34.3936, 36.5817,
44.0772

■ 37.4535, 40.1687,
52.9057

■ 40.7866, 44.0116,
62.7207

■ 44.4000, 48.1157,
73.5519

Harmonies

Analogous

The Analogous color harmony consists of three colors that are next to each other on the color wheel.



23.9725, 20.1088, 13.2912



21.3308, 20.1088, 9.9648



18.3281, 20.1088, 9.3680

Triad

The Triadic color harmony groups three colors that are evenly spaced from another and form a triangle on the color wheel.



21.3308, 20.1088, 9.9648



13.9989, 20.1088, 24.2540



22.8483, 20.1088, 37.4673

Complementary

The Complementary color scheme is a pair of colors which are on the opposite of each other on the color wheel.



21.3308, 20.1088, 9.9648



15.6206, 16.9759, 33.9056

Split Complementary

Split-complementary colors differ from the complementary color scheme. The scheme consists of three colors, the original color and two neighbors of the complement color.



19.9196, 20.1088, 42.4026



21.3308, 20.1088, 9.9648



14.9587, 20.1088, 33.5856

Square

The Square scheme is like the rectangle color scheme, but the four colors are evenly spaced on the color wheel.



21.3308, 20.1088, 9.9648



14.2930, 20.1088, 16.3266



17.0542, 20.1088, 40.8231



24.9100, 20.1088, 28.6044

Rectangle

The Rectangle color scheme consists of four colors that form a rectangle on the color wheel.



21.3308, 20.1088, 9.9648



16.5551, 20.1088, 10.4007



17.0542, 20.1088, 40.8231



21.9213, 20.1088, 39.7328

Sweetspot

The Sweet Spot groups the original color and five complimentary colors.



21.3313, 20.1098, 9.9652



50.5328, 51.9688, 47.1060



19.7225, 13.8319, 18.8635



10.9437, 11.2154, 9.9018



74.8435, 78.7412, 85.7492



12.6291, 13.2868, 14.4694

Same Dimension

The Same Dimension uses a secret algorithm to generate beautiful new colors.



21.3313, 20.1098, 9.9652



35.9696, 32.5604, 12.2921



26.7568, 30.9607, 11.7737



6.8864, 7.1529, 7.0034



13.4569, 10.1494, 1.2498



0.2828, 0.2659, 0.0364

Inverse Universe

The Inverse Universe completely reimagines the original color for something new.



15.6206, 16.9759, 33.9056



24.3723, 26.1921, 60.8978



11.9604, 9.6555, 32.6856



6.5518, 6.9694, 8.4066



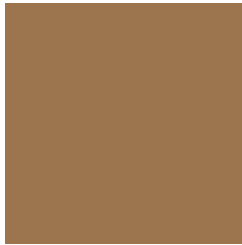
7.3400, 6.7715, 26.8274



0.1735, 0.2057, 0.4938

Previews

White Background



This preview shows how the XYZ color 21.3308, 20.1088, 9.9648 looks on a white background.

Color Contrast Check

Large Text (above 18pt) WCAG AA ✓ Pass

Any Text WCAG AA × Fail

Large Text (above 18pt) WCAG AAA × Fail

Any Text WCAG AAA × Fail

Black Background



This preview shows how the XYZ color 21.3308, 20.1088, 9.9648 looks on a black background.

Color Contrast Check

Large Text (above 18pt) WCAG AA ✓ Pass

Any Text WCAG AA ✓ Pass

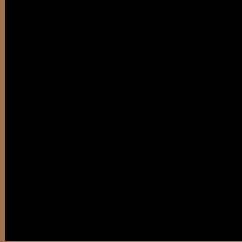
Large Text (above 18pt) WCAG AAA ✓ Pass

Any Text WCAG AAA × Fail

If you want to check with other color combinations, try the [Color Contrast Checker](#).

XYZ 21.3308, 20.1088, 9.9648

Background



This preview shows how black text looks on a background with the XYZ color 21.3308, 20.1088, 9.9648.



This preview shows how white text looks on a background with the XYZ color 21.3308, 20.1088,

Color Blindness Simulation

Color vision deficiency is a very complex topic, and I could not describe the different causes any better than Wikipedia does, so if you want to learn more, you should check out their [article about color blindness](#).

Dichromacy



Original Color

21.3308, 20.1088, 9.9648

Protanopia

18.6845, 20.1603, 10.6911

Deuteranopia

20.5141, 20.2135, 9.8416



Tritanopia

23.5114, 20.1744, 20.1076

Trichromacy



Original Color

21.3308, 20.1088, 9.9648

Protanomaly

19.6130, 20.0936, 10.4341

Deuteranomaly

20.7669, 20.1681, 9.8195

Tritanomaly

22.7019, 20.1807, 15.7954

Monochromacy



Original Color

21.3308, 20.1088, 9.9648

Achromatopsia

19.1579, 20.1556, 21.9495

Achromatomaly

19.6446, 19.9705, 16.7292

CSS Examples

Text

The CSS property to change the color of the text to XYZ 21.3308, 20.1088, 9.9648 is called "color". The color property can be set on classes, ids or directly on the HTML element.

This example shows how text in the color `rgb(156, 116, 78)` looks like.

```
.text, #text, p{  
    color:rgb(156, 116, 78)  
}
```

If you want to add a text shadow in that color use the text-shadow property, you can generate a text shadow directly with our [CSS Text Shadow Generator](#).

Here you see how black text with a 4 pixel rgb(156, 116, 78) colored shadow looks like.

```
.shadow{ text-shadow: 4px 4px 2px rgb(156, 116, 78) }
```

Border

The CSS property to change the border of an element to XYZ 21.3308, 20.1088, 9.9648 is called "border". The border property can be set on classes, ids or directly on the HTML element.

This example shows the color as border, it can be applied via the CSS property "border" or "border-color".

```
.border, #border, table{ border:4px solid rgb(156, 116, 78) }
```


If only the border color should be changed use the property `border-color`.

```
.border{ border-color:rgb(156, 116, 78) }
```

If you want to add a box shadow in that color use:

Here you see how a box with a 4 pixel `rgb(156, 116, 78)` colored shadow looks like.

```
.boxshadow{ -moz-box-shadow:4px 4px 4px  
4px rgb(156, 116, 78); -webkit-box-  
shadow:4px 4px 4px 4px rgb(156, 116, 78);  
box-shadow:4px 4px 4px 4px rgb(156, 116,  
78) }
```

Background

The CSS property to change the background color of an element to XYZ 21.3308, 20.1088, 9.9648 is called "background". The background property can be set on classes, ids or directly on the HTML element.

```
.background, #background, body{  
background: rgb(156, 116, 78) }
```

If only the background color should be changed can be used:

```
.background{ background-color: rgb(156,  
116, 78) }
```

This example shows the color as background, it is applied via the CSS property "background".

To optimize and compress your CSS code, you can use our [online CSS compressor and optimizer](#) based on csstidy. If you want to create a linear or radial gradient as background or border, check our [CSS Gradient Generator](#).

Hey! You found this booklet interesting? Support Converting Colors with the new Membership Option!

The pro membership hides all ads, plus gives you double the colors in the color bucket, and more awesome pro features!

[Learn more, Memberships starting at \\$2.50/m!](#)

**Follow me
on Twitter!**

@ConvertingColor