

Converting Colors

XYZ(21.3360, 20.2609, 9.9524)

Have a look what the booklet for
XYZ(21.3360, 20.2609, 9.9524)
contains.

XYZ(21.4467, 20.3406, 10.0035)	3
<i>Conversions</i>	4
<i>Details</i>	6
<i>Harmonies</i>	12
<i>Previews</i>	24
<i>Color Blindness Simulation</i>	28
<i>CSS Examples</i>	31

Color

**XYZ(21.4467, 20.3406,
10.0035)**

Conversions

Conversions Part 1

Format	Color
Hex	9C754E
RGB	156, 117, 78
RGB Percent	61%, 46%, 31%
CMY	0.3882, 0.5412, 0.6941
CMYK	0.00, 0.25, 0.50, 0.39
HSL	30°, 33%, 46%
HSV	30°, 50%, 61%
XYZ	21.4467, 20.3406, 10.0035
YIQ	124.2150, 35.7630, -3.8610

Conversions

Conversions Part 2

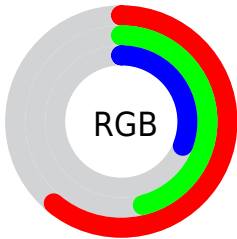
Format	Color
R_{YB}	156, 156, 78
Decimal	10253646
CIE _{Lab}	52.22, 10.35, 27.38
CIE _{LCh}	52, 29.265, 69.294
Yxy	20.3406, 0.4141, 0.3927
Android (android.graphics.Color)	4288443726 (0xFF9C754E)
YUV	124.2150, -22.7840, 27.8754
Hunter-Lab	45.1006, 5.9563, 18.4196

Details

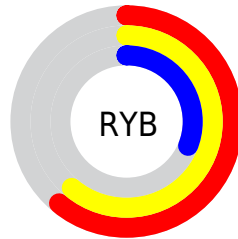
The XYZ color **21.4467, 20.3406, 10.0035** is a dark color, and the websafe version is hex **996633**. A complement of this color would be **15.5035, 16.7417, 33.8666**, and the grayscale version is **19.2957, 20.3006, 22.1073**.

A 20% lighter version of the original color is **45.2356, 43.9315, 26.5175**, and **7.8683, 7.1853, 2.3387** is the 20% darker color. If you saturate the color by 10%, you get **20.0813, 18.4012, 7.1088**, and if you desaturate by 10%, it is **23.0215, 22.4864, 13.6231**.

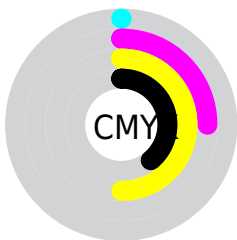
Distribution



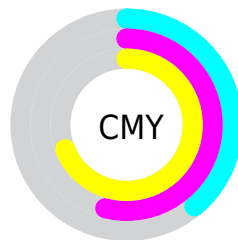
- Red (61%)
- Green (46%)
- Blue (31%)



- Red (61%)
- Yellow (61%)
- Blue (31%)



- Cyan (0%)
- Magenta (25%)
- Yellow (50%)
- Black (39%)



- Cyan (39%)
- Magenta (54%)
- Yellow (69%)

Brightness & Saturation Gradients

These gradients show how the XYZ color 21.4467, 20.3406, 10.0035 changes by changing the brightness by 10 percent. The first figure shows a shift by +10% for each color and the second figure -10%.

Similar to the brightness gradients but the following saturation gradients show a change of the XYZ color 21.4467, 20.3406, 10.0035 by changing the saturation by 10% instead.

■ 21.4467, 20.3406,
10.0035

■ 21.4467, 20.3406,
10.0035

252.3301,
253.7531, 201.1828

■ 13.5652, 12.6429,
5.2956

■ 45.3155, 43.9875,
26.4100

■ 7.8986, 7.1831,
2.3600

■ 62.0335, 60.7054,
38.9457

■ 4.0814, 3.5769,
0.7645

■ 82.4278, 81.1989,
54.9278

■ 1.7483, 1.4398,
0.0000

■ 106.8636,
105.8523, 74.7748

■ 0.4862, 0.2458,
0.0000

■ 135.7064,
135.0500, 98.9053

■ 0.0000, 0.0000,
0.0000

169.3215,

169.1765, 127.7377

208.0743,
208.6160, 161.6907

■ 21.4467, 20.3406,
10.0035

■ 21.4467, 20.3406,
10.0035

■ 20.0813, 18.4012,
7.1088

■ 23.0215, 22.4864,
13.6231

■ 18.9125, 16.6580,
4.8869

■ 24.8146, 24.8428,
18.0121

■ 17.9280, 15.1036,
3.2807

■ 26.8361, 27.4173,
23.2131

■ 17.1132, 13.7291,
2.2228

■ 29.0949, 30.2161,
29.2651

■ 16.4352, 12.5179,
1.5500

■ 31.5995, 33.2452,
36.2044

■ 16.4352, 12.5178,
1.5499

■ 34.3579, 36.5102,
44.0654

■ 37.3776, 40.0167,
52.8805

■ 40.6658, 43.7700,
62.6807

■ 44.2297, 47.7750,
73.4953

Harmonies

Analogous

The Analogous color harmony consists of three colors that are next to each other on the color wheel.



24.1533, 20.3406, 13.2410



21.4467, 20.3406, 10.0035



18.4158, 20.3406, 9.5110

Triad

The Triadic color harmony groups three colors that are evenly spaced from another and form a triangle on the color wheel.



21.4467, 20.3406, 10.0035



14.1778, 20.3406, 24.9261



23.2240, 20.3406, 37.5629

Complementary

The Complementary color scheme is a pair of colors which are on the opposite of each other on the color wheel.



21.4467, 20.3406, 10.0035



15.5035, 16.7417, 33.8666

Split Complementary

Split-complementary colors differ from the complementary color scheme. The scheme consists of three colors, the original color and two neighbors of the complement color.



20.2805, 20.3406, 42.7958



21.4467, 20.3406, 10.0035



15.2011, 20.3406, 34.3533

Square

The Square scheme is like the rectangle color scheme, but the four colors are evenly spaced on the color wheel.



21.4467, 20.3406, 10.0035



14.4207, 20.3406, 16.8016



17.3632, 20.3406, 41.4895



25.2509, 20.3406, 28.5217

Rectangle

The Rectangle color scheme consists of four colors that form a rectangle on the color wheel.



21.4467, 20.3406, 10.0035



16.6440, 20.3406, 10.6322



17.3632, 20.3406, 41.4895



22.2973, 20.3406, 39.9197

Sweetspot

The Sweet Spot groups the original color and five complimentary colors.



21.4472, 20.3416, 10.0039



50.6169, 52.1370, 47.1340



19.6456, 13.8012, 18.4582



10.9643, 11.2566, 9.9086



74.8435, 78.7412, 85.7492



12.6291, 13.2868, 14.4694

Same Dimension

The Same Dimension uses a secret algorithm to generate beautiful new colors.



21.4472, 20.3416, 10.0039



36.2031, 33.0274, 12.3699



26.9737, 31.3947, 11.8461



6.8933, 7.1667, 7.0056



13.5724, 10.3803, 1.2883



0.2850, 0.2702, 0.0371

Inverse Universe

The Inverse Universe completely reimagines the original color for something new.



15.5035, 16.7417, 33.8666



24.1355, 25.7185, 60.8188



11.8672, 9.4690, 32.6544



6.5450, 6.9557, 8.4043



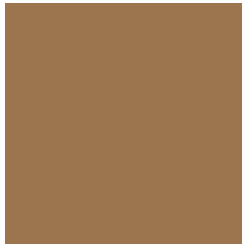
7.2210, 6.5336, 26.7878



0.1714, 0.2014, 0.4931

Previews

White Background



This preview shows how the XYZ color 21.4467, 20.3406, 10.0035 looks on a white background.

Color Contrast Check

Large Text (above 18pt) WCAG AA ✓ Pass

Any Text WCAG AA × Fail

Large Text (above 18pt) WCAG AAA × Fail

Any Text WCAG AAA × Fail

Black Background



This preview shows how the XYZ color 21.4467, 20.3406, 10.0035 looks on a black background.

Color Contrast Check

Large Text (above 18pt) WCAG AA ✓ Pass

Any Text WCAG AA ✓ Pass

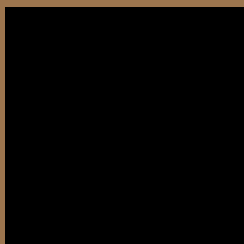
Large Text (above 18pt) WCAG AAA ✓ Pass

Any Text WCAG AAA × Fail

If you want to check with other color combinations, try the [Color Contrast Checker](#).

XYZ 21.4467, 20.3406, 10.0035

Background



This preview shows how black text looks on a background with the XYZ color 21.4467, 20.3406, 10.0035.



This preview shows how white text looks on a background with the XYZ color 21.4467, 20.3406,

Color Blindness Simulation

Color vision deficiency is a very complex topic, and I could not describe the different causes any better than Wikipedia does, so if you want to learn more, you should check out their [article about color blindness](#).

Dichromacy



Original Color

21.4467, 20.3406, 10.0035

Protanopia

18.9722, 20.4956, 10.7407

Deuteranopia

20.7345, 20.3230, 10.0376



Tritanopia

23.6815, 20.4180, 20.4622

Trichromacy



Original Color

21.4467, 20.3406, 10.0035

Protanomaly

19.7352, 20.3379, 10.4749

Deuteranomaly

20.9904, 20.2792, 10.0157

Tritanomaly

22.8652, 20.4255, 16.1020

Monochromacy



Original Color

21.4467, 20.3406, 10.0035

Achromatopsia

19.1579, 20.1556, 21.9495

Achromatomaly

19.6446, 19.9705, 16.7292

CSS Examples

Text

The CSS property to change the color of the text to XYZ 21.4467, 20.3406, 10.0035 is called "color". The color property can be set on classes, ids or directly on the HTML element.

This example shows how text in the color `rgb(156, 117, 78)` looks like.

```
.text, #text, p{  
    color:rgb(156, 117, 78)  
}
```

If you want to add a text shadow in that color use the text-shadow property, you can generate a text shadow directly with our [CSS Text Shadow Generator](#).

Here you see how black text with a 4 pixel rgb(156, 117, 78) colored shadow looks like.

```
.shadow{ text-shadow: 4px 4px 2px rgb(156, 117, 78) }
```

Border

The CSS property to change the border of an element to XYZ 21.4467, 20.3406, 10.0035 is called "border". The border property can be set on classes, ids or directly on the HTML element.

This example shows the color as border, it can be applied via the CSS property "border" or "border-color".

```
.border, #border, table{ border:4px solid rgb(156, 117, 78) }
```


If only the border color should be changed use the property `border-color`.

```
.border{ border-color:rgb(156, 117, 78) }
```

If you want to add a box shadow in that color use:

Here you see how a box with a 4 pixel `rgb(156, 117, 78)` colored shadow looks like.

```
.boxshadow{ -moz-box-shadow:4px 4px 4px  
4px rgb(156, 117, 78); -webkit-box-  
shadow:4px 4px 4px 4px rgb(156, 117, 78);  
box-shadow:4px 4px 4px 4px rgb(156, 117,  
78) }
```

Background

The CSS property to change the background color of an element to XYZ 21.4467, 20.3406, 10.0035 is called "background". The background property can be set on classes, ids or directly on the HTML element.

```
.background, #background, body{  
background: rgb(156, 117, 78) }
```

If only the background color should be changed can be used:

```
.background{ background-color: rgb(156,  
117, 78) }
```

This example shows the color as background, it is applied via the CSS property "background".

To optimize and compress your CSS code, you can use our [online CSS compressor and optimizer](#) based on csstidy. If you want to create a linear or radial gradient as background or border, check our [CSS Gradient Generator](#).

Hey! You found this booklet interesting? Support Converting Colors with the new Membership Option!

The pro membership hides all ads, plus gives you double the colors in the color bucket, and more awesome pro features!

[Learn more, Memberships starting at \\$2.50/m!](#)

**Follow me
on Twitter!**

@ConvertingColor