

Converting Colors

XYZ(21.5274, 20.4467, 11.0886)

Have a look what the booklet for
XYZ(21.5274, 20.4467, 11.0886)
contains.

XYZ(21.5573, 20.5500, 11.0140)	3
<i>Conversions</i>	4
<i>Details</i>	6
<i>Harmonies</i>	12
<i>Previews</i>	24
<i>Color Blindness Simulation</i>	28
<i>CSS Examples</i>	31

Color

**XYZ(21.5573, 20.5500,
11.0140)**

Conversions

Conversions Part 1

Format	Color
Hex	9B7653
RGB	155, 118, 83
RGB Percent	61%, 46%, 33%
CMY	0.3922, 0.5372, 0.6745
CMYK	0.00, 0.24, 0.46, 0.39
HSL	29°, 30%, 47%
HSV	29°, 46%, 61%
XYZ	21.5573, 20.5500, 11.0140
YIQ	125.0730, 33.2870, -3.0410

Conversions

Conversions Part 2

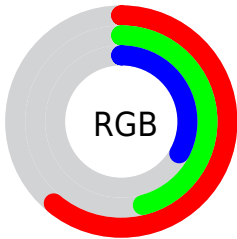
Format	Color
R_{YB}	155, 151, 83
Decimal	10188371
CIE _{Lab}	52.45, 9.86, 24.84
CIE _{LCh}	52, 26.723, 68.338
Yxy	20.5500, 0.4058, 0.3869
Android (android.graphics.Color)	4288378451 (0xFF9B7653)
YUV	125.0730, -20.7420, 26.2460
Hunter-Lab	45.3321, 5.5530, 17.3272

Details

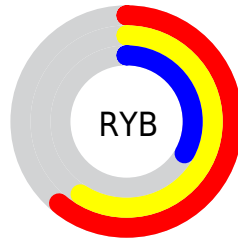
The XYZ color **21.5573, 20.5500, 11.0140** is a dark color, and the websafe version is hex **996633**, and the color name is **dirt**. A complement of this color would be **16.1998, 17.6377, 33.5607**, and the grayscale version is **19.5779, 20.5974, 22.4306**.

A 20% lighter version of the original color is **45.4723, 44.2918, 28.3428**, and **8.0036, 7.3387, 2.7449** is the 20% darker color. If you saturate the color by 10%, you get **20.1260, 18.5403, 7.9073**, and if you desaturate by 10%, it is **23.2027, 22.7736, 14.8526**.

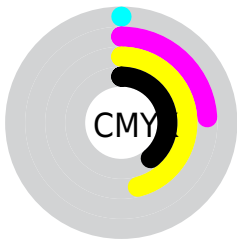
Distribution



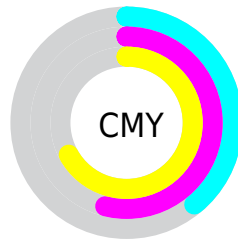
- Red (61%)
- Green (46%)
- Blue (33%)



- Red (61%)
- Yellow (59%)
- Blue (33%)



- Cyan (0%)
- Magenta (24%)
- Yellow (46%)
- Black (39%)



- Cyan (39%)
- Magenta (54%)
- Yellow (67%)

Brightness & Saturation Gradients

These gradients show how the XYZ color 21.5573, 20.5500, 11.0140 changes by changing the brightness by 10 percent. The first figure shows a shift by +10% for each color and the second figure -10%.

Similar to the brightness gradients but the following saturation gradients show a change of the XYZ color 21.5573, 20.5500, 11.0140 by changing the saturation by 10% instead.

■ 21.5573, 20.5500,
11.0140

■ 21.5573, 20.5500,
11.0140

252.9016,
254.8772, 208.5045

■ 13.6468, 12.7955,
5.9620

■ 45.4975, 44.3374,
28.3231

■ 7.9554, 7.2879,
2.7535

■ 62.2579, 61.1391,
41.4172

■ 4.1180, 3.6428,
0.9702

■ 82.6990, 81.7252,
58.0292

■ 1.7691, 1.4758,
0.0000

■ 107.1861,
106.4802, 78.5774

■ 0.4990, 0.2716,
0.0000

■ 136.0845,
135.7886, 103.4805

■ 0.0000, 0.0000,
0.0000

169.7597,

170.0346, 133.1570

208.5769,
209.6027, 168.0255

■ 21.5573, 20.5500,
11.0140

■ 21.5573, 20.5500,
11.0140

■ 20.1260, 18.5403,
7.9073

■ 23.2027, 22.7736,
14.8526

■ 18.8961, 16.7341,
5.4831

■ 25.0707, 25.2152,
19.4656

■ 17.8562, 15.1242,
3.6876

■ 27.1711, 27.8824,
24.8937

■ 16.9924, 13.7017,
2.4586

■ 29.5127, 30.7815,
31.1745

■ 16.2850, 12.4553,
1.7038

■ 32.1038, 33.9187,
38.3429

■ 16.0577, 12.0490,
1.4794

■ 34.9522, 37.2996,
46.4322

■ 38.0655, 40.9298,
55.4737

■ 41.4506, 44.8147,
65.4975

■ 45.1146, 48.9594,
76.5320

Harmonies

Analogous

The Analogous color harmony consists of three colors that are next to each other on the color wheel.



23.9974, 20.5500, 14.2098



21.5573, 20.5500, 11.0140



18.7726, 20.5500, 10.4548

Triad

The Triadic color harmony groups three colors that are evenly spaced from another and form a triangle on the color wheel.



21.5573, 20.5500, 11.0140



14.7378, 20.5500, 24.6527



23.0125, 20.5500, 36.5392

Complementary

The Complementary color scheme is a pair of colors which are on the opposite of each other on the color wheel.



21.5573, 20.5500, 11.0140



16.1998, 17.6377, 33.5607

Split Complementary

Split-complementary colors differ from the complementary color scheme. The scheme consists of three colors, the original color and two neighbors of the complement color.



20.3119, 20.5500, 41.0339



21.5573, 20.5500, 11.0140



15.6583, 20.5500, 33.1894

Square

The Square scheme is like the rectangle color scheme, but the four colors are evenly spaced on the color wheel.



21.5573, 20.5500, 11.0140



15.0035, 20.5500, 17.2211



17.6380, 20.5500, 39.6817



24.8911, 20.5500, 28.4676

Rectangle

The Rectangle color scheme consists of four colors that form a rectangle on the color wheel.



21.5573, 20.5500, 11.0140



17.1198, 20.5500, 11.4870



17.6380, 20.5500, 39.6817



22.1611, 20.5500, 38.5957

Sweetspot

The Sweet Spot groups the original color and five complimentary colors.



21.5578, 20.5510, 11.0144



49.5368, 51.0297, 46.8994



20.0132, 14.5162, 19.5802



11.0280, 11.3198, 10.1274



74.8435, 78.7412, 85.7492



12.6291, 13.2868, 14.4694

Same Dimension

The Same Dimension uses a secret algorithm to generate beautiful new colors.



21.5578, 20.5510, 11.0144



35.8918, 32.9856, 13.8468



26.6014, 30.6381, 12.6956



6.4442, 6.6935, 6.5582



12.9357, 9.7539, 1.2009



0.2296, 0.2182, 0.0300

Inverse Universe

The Inverse Universe completely reimagines the original color for something new.



16.1998, 17.6377, 33.5607



25.0531, 27.0889, 59.4445



12.6697, 10.5775, 32.3840



6.1337, 6.5248, 7.8651



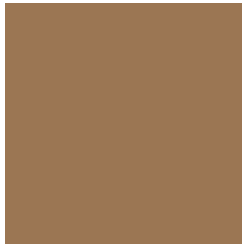
7.0737, 6.5440, 25.7980



0.1422, 0.1706, 0.3978

Previews

White Background



This preview shows how the XYZ color 21.5573, 20.5500, 11.0140 looks on a white background.

Color Contrast Check

Large Text (above 18pt) WCAG AA ✓ Pass

Any Text WCAG AA × Fail

Large Text (above 18pt) WCAG AAA × Fail

Any Text WCAG AAA × Fail

Black Background



This preview shows how the XYZ color 21.5573, 20.5500, 11.0140 looks on a black background.

Color Contrast Check

Large Text (above 18pt) WCAG AA ✓ Pass

Any Text WCAG AA ✓ Pass

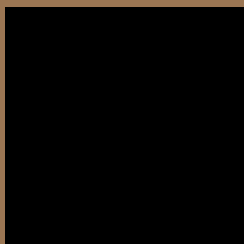
Large Text (above 18pt) WCAG AAA ✓ Pass

Any Text WCAG AAA × Fail

If you want to check with other color combinations, try the [Color Contrast Checker](#).

XYZ 21.5573, 20.5500, 11.0140

Background



This preview shows how black text looks on a background with the XYZ color 21.5573, 20.5500, 11.0140.



This preview shows how white text looks on a background with the XYZ color 21.5573, 20.5500,

Color Blindness Simulation

Color vision deficiency is a very complex topic, and I could not describe the different causes any better than Wikipedia does, so if you want to learn more, you should check out their [article about color blindness](#).

Dichromacy



Original Color

21.5573, 20.5500, 11.0140

Protanopia

19.1667, 20.5734, 11.7650

Deuteranopia

21.0403, 20.6368, 11.0580



Tritanopia

23.7161, 20.5863, 21.1359

Trichromacy



Original Color

21.5573, 20.5500, 11.0140

Protanomaly

19.9269, 20.4146, 11.4845

Deuteranomaly

21.1071, 20.4936, 11.0268

Tritanomaly

22.9381, 20.6133, 16.9572

Monochromacy



Original Color

21.5573, 20.5500, 11.0140

Achromatopsia

19.4927, 20.5079, 22.3331

Achromatomaly

19.9273, 20.2791, 17.6158

CSS Examples

Text

The CSS property to change the color of the text to XYZ 21.5573, 20.5500, 11.0140 is called "color". The color property can be set on classes, ids or directly on the HTML element.

This example shows how text in the color `rgb(155, 118, 83)` looks like.

```
.text, #text, p{  
    color:rgb(155, 118, 83)  
}
```

If you want to add a text shadow in that color use the text-shadow property, you can generate a text shadow directly with our [CSS Text Shadow Generator](#).

Here you see how black text with a 4 pixel rgb(155, 118, 83) colored shadow looks like.

```
.shadow{ text-shadow: 4px 4px 2px rgb(155, 118, 83) }
```

Border

The CSS property to change the border of an element to XYZ 21.5573, 20.5500, 11.0140 is called "border". The border property can be set on classes, ids or directly on the HTML element.

This example shows the color as border, it can be applied via the CSS property "border" or "border-color".

```
.border, #border, table{ border:4px solid rgb(155, 118, 83) }
```


If only the border color should be changed use the property `border-color`.

```
.border{ border-color:rgb(155, 118, 83) }
```

If you want to add a box shadow in that color use:

Here you see how a box with a 4 pixel `rgb(155, 118, 83)` colored shadow looks like.

```
.boxshadow{ -moz-box-shadow:4px 4px 4px  
4px rgb(155, 118, 83); -webkit-box-  
shadow:4px 4px 4px 4px rgb(155, 118, 83);  
box-shadow:4px 4px 4px 4px rgb(155, 118,  
83) }
```

Background

The CSS property to change the background color of an element to XYZ 21.5573, 20.5500, 11.0140 is called "background". The background property can be set on classes, ids or directly on the HTML element.

```
.background, #background, body{  
background: rgb(155, 118, 83) }
```

If only the background color should be changed can be used:

```
.background{ background-color: rgb(155,  
118, 83) }
```

This example shows the color as background, it is applied via the CSS property "background".

To optimize and compress your CSS code, you can use our [online CSS compressor and optimizer](#) based on csstidy. If you want to create a linear or radial gradient as background or border, check our [CSS Gradient Generator](#).

Hey! You found this booklet interesting? Support Converting Colors with the new Membership Option!

The pro membership hides all ads, plus gives you double the colors in the color bucket, and more awesome pro features!

[Learn more, Memberships starting at \\$2.50/m!](#)

**Follow me
on Twitter!**

@ConvertingColor