

Converting Colors

XYZ(21.7316, 20.9141, 14.6961)

Have a look what the booklet for
XYZ(21.7316, 20.9141, 14.6961)
contains.

XYZ(21.7311, 20.9131, 14.6957)	3
<i>Conversions</i>	4
<i>Details</i>	6
<i>Harmonies</i>	12
<i>Previews</i>	24
<i>Color Blindness Simulation</i>	28
<i>CSS Examples</i>	31

Color

**XYZ(21.7311, 20.9131,
14.6957)**

Conversions

Conversions Part 1

Format	Color
Hex	977863
RGB	151, 120, 99
RGB Percent	59%, 47%, 39%
CMY	0.4078, 0.5294, 0.6118
CMYK	0.00, 0.21, 0.34, 0.41
HSL	24°, 21%, 49%
HSV	24°, 34%, 59%
XYZ	21.7311, 20.9131, 14.6957
YIQ	126.8750, 25.2170, 0.0410

Conversions

Conversions Part 2

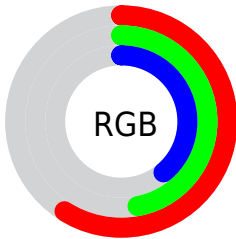
Format	Color
R_{YB}	151, 134, 99
Decimal	9926755
CIE _{Lab}	52.85, 8.95, 16.12
CIE _{LCh}	53, 18.443, 60.957
Yxy	20.9131, 0.3790, 0.3647
Android (android.graphics.Color)	4288116835 (0xFF977863)
YUV	126.8750, -13.7424, 21.1576
Hunter-Lab	45.7308, 4.7935, 12.9586

Details

The XYZ color **21.7311, 20.9131, 14.6957** is a dark color, and the websafe version is hex **996666**. A complement of this color would be **18.7139, 20.8516, 32.3166**, and the grayscale version is **20.1699, 21.2204, 23.1090**.

A 20% lighter version of the original color is **45.7111, 44.8289, 35.0978**, and **8.0828, 7.5353, 4.2773** is the 20% darker color. If you saturate the color by 10%, you get **20.0436, 18.5874, 10.8985**, and if you desaturate by 10%, it is **23.6564, 23.4983, 19.2386**.

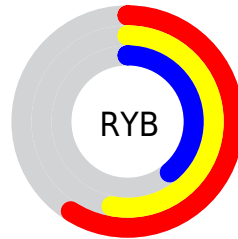
Distribution



Red (59%)

Green (47%)

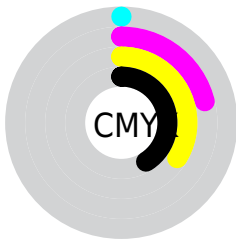
Blue (39%)



Red (59%)

Yellow (53%)

Blue (39%)

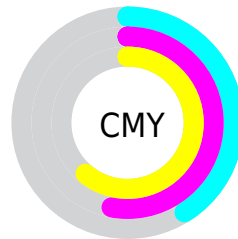


Cyan (0%)

Magenta (21%)

Yellow (34%)

Black (41%)



Cyan (41%)

Magenta (53%)

Yellow (61%)

Brightness & Saturation Gradients

These gradients show how the XYZ color 21.7311, 20.9131, 14.6957 changes by changing the brightness by 10 percent. The first figure shows a shift by +10% for each color and the second figure -10%.

Similar to the brightness gradients but the following saturation gradients show a change of the XYZ color 21.7311, 20.9131, 14.6957 by changing the saturation by 10% instead.

■ 21.7311, 20.9131,
14.6957

■ 21.7311, 20.9131,
14.6957

253.7976,
256.8163, 233.0939

■ 13.7749, 13.0605,
8.4619

■ 45.7833, 44.9429,
35.0532

■ 8.0450, 7.4702,
4.2999

■ 62.6101, 61.8888,
50.0139

■ 4.1758, 3.7579,
1.7913

■ 83.1245, 82.6347,
68.7206

■ 1.8021, 1.5391,
0.4222

■ 107.6918,
107.5648, 91.5920

■ 0.5189, 0.3160,
0.0000

136.6774,
137.0637, 119.0464

■ 0.0000, 0.0000,
0.0000

170.4467,

171.5156, 151.5025

209.3650,
211.3050, 189.3788

■ 21.7311, 20.9131,
14.6957

■ 21.7311, 20.9131,
14.6957

■ 20.0436, 18.5874,
10.8985

■ 23.6564, 23.4983,
19.2386

■ 18.5821, 16.5096,
7.8052

■ 25.8277, 26.3483,
24.5635

■ 17.3358, 14.6717,
5.3716

■ 28.2544, 29.4717,
30.7059

■ 16.2925, 13.0638,
3.5479

■ 30.9452, 32.8761,
37.6985

■ 15.4382, 11.6752,
2.2771

■ 33.9082, 36.5684,
45.5723

■ 14.7566, 10.4939,
1.4890

■ 37.1512, 40.5555,
54.3569

■ 14.4307, 9.9157,
1.1533

■ 40.6816, 44.8442,
64.0803

■ 44.5067, 49.4406,
74.7695

■ 48.6333, 54.3511,
86.4500

Harmonies

Analogous

The Analogous color harmony consists of three colors that are next to each other on the color wheel.



23.2275, 20.9131, 17.7364



21.7311, 20.9131, 14.6957



19.8155, 20.9131, 13.7225

Triad

The Triadic color harmony groups three colors that are evenly spaced from another and form a triangle on the color wheel.



21.7311, 20.9131, 14.6957



16.3976, 20.9131, 22.9484



21.8450, 20.9131, 33.1382

Complementary

The Complementary color scheme is a pair of colors which are on the opposite of each other on the color wheel.



21.7311, 20.9131, 14.6957



18.7139, 20.8516, 32.3166

Split Complementary

Split-complementary colors differ from the complementary color scheme. The scheme consists of three colors, the original color and two neighbors of the complement color.



19.9392, 20.9131, 35.1158



21.7311, 20.9131, 14.6957



16.8658, 20.9131, 28.6778

Square

The Square scheme is like the rectangle color scheme, but the four colors are evenly spaced on the color wheel.



21.7311, 20.9131, 14.6957



16.8104, 20.9131, 17.9974



18.1320, 20.9131, 33.3663



23.2962, 20.9131, 28.3214

Rectangle

The Rectangle color scheme consists of four colors that form a rectangle on the color wheel.



21.7311, 20.9131, 14.6957



18.5811, 20.9131, 14.2284



18.1320, 20.9131, 33.3663



21.2323, 20.9131, 34.1890

Sweetspot

The Sweet Spot groups the original color and five complimentary colors.



21.7316, 20.9141, 14.6961



48.0385, 49.4956, 48.4679



21.2672, 17.1203, 23.3734



10.7927, 11.0873, 10.6990



72.9764, 76.7769, 83.6100



11.9732, 12.5967, 13.7178

Same Dimension

The Same Dimension uses a secret algorithm to generate beautiful new colors.



21.7316, 20.9141, 14.6961



36.6464, 34.3338, 21.1718



25.2628, 27.9764, 15.8732



6.4034, 6.6118, 6.5446



12.3032, 8.4888, 0.9900



0.2182, 0.1955, 0.0262

Inverse Universe

The Inverse Universe completely reimagines the original color for something new.



18.7139, 20.8516, 32.3166



30.4315, 34.1955, 57.4302



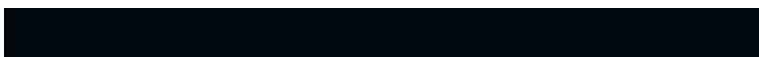
15.7022, 14.8282, 31.3127



6.1752, 6.6077, 7.8789



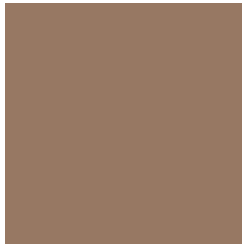
7.8916, 8.1799, 26.0706



0.1535, 0.1934, 0.4016

Previews

White Background



This preview shows how the XYZ color 21.7311, 20.9131, 14.6957 looks on a white background.

Color Contrast Check

Large Text (above 18pt) WCAG AA ✓ Pass

Any Text WCAG AA × Fail

Large Text (above 18pt) WCAG AAA × Fail

Any Text WCAG AAA × Fail

Black Background



This preview shows how the XYZ color 21.7311, 20.9131, 14.6957 looks on a black background.

Color Contrast Check

Large Text (above 18pt) WCAG AA ✓ Pass

Any Text WCAG AA ✓ Pass

Large Text (above 18pt) WCAG AAA ✓ Pass

Any Text WCAG AAA × Fail

If you want to check with other color combinations, try the [Color Contrast Checker](#).

XYZ 21.7311, 20.9131, 14.6957

Background



This preview shows how black text looks on a background with the XYZ color 21.7311, 20.9131, 14.6957.



This preview shows how white text looks on a background with the XYZ color 21.7311, 20.9131,

Color Blindness Simulation

Color vision deficiency is a very complex topic, and I could not describe the different causes any better than Wikipedia does, so if you want to learn more, you should check out their [article about color blindness](#).

Dichromacy



Original Color

21.7311, 20.9131, 14.6957

Protanopia

19.6906, 20.9494, 15.5762

Deuteranopia

21.3022, 20.8715, 14.7102



Tritanopia

23.2735, 20.8415, 22.1982

Trichromacy



Original Color

21.7311, 20.9131, 14.6957

Protanomaly

20.3718, 20.9303, 15.2782

Deuteranomaly

21.4839, 20.9652, 14.7187

Tritanomaly

22.6505, 20.7558, 19.3355

Monochromacy



Original Color

21.7311, 20.9131, 14.6957

Achromatopsia

20.1725, 21.2231, 23.1119

Achromatomaly

20.5719, 20.9339, 19.7860

CSS Examples

Text

The CSS property to change the color of the text to XYZ 21.7311, 20.9131, 14.6957 is called "color". The color property can be set on classes, ids or directly on the HTML element.

This example shows how text in the color `rgb(151, 120, 99)` looks like.

```
.text, #text, p{  
    color:rgb(151, 120, 99)  
}
```

If you want to add a text shadow in that color use the text-shadow property, you can generate a text shadow directly with our [CSS Text Shadow Generator](#).

Here you see how black text with a 4 pixel rgb(151, 120, 99) colored shadow looks like.

```
.shadow{ text-shadow: 4px 4px 2px rgb(151, 120, 99) }
```

Border

The CSS property to change the border of an element to XYZ 21.7311, 20.9131, 14.6957 is called "border". The border property can be set on classes, ids or directly on the HTML element.

This example shows the color as border, it can be applied via the CSS property "border" or "border-color".

```
.border, #border, table{ border:4px solid rgb(151, 120, 99) }
```


If only the border color should be changed use the property `border-color`.

```
.border{ border-color:rgb(151, 120, 99) }
```

If you want to add a box shadow in that color use:

Here you see how a box with a 4 pixel `rgb(151, 120, 99)` colored shadow looks like.

```
.boxshadow{ -moz-box-shadow:4px 4px 4px  
4px rgb(151, 120, 99); -webkit-box-  
shadow:4px 4px 4px 4px rgb(151, 120, 99);  
box-shadow:4px 4px 4px 4px rgb(151, 120,  
99) }
```

Background

The CSS property to change the background color of an element to XYZ 21.7311, 20.9131, 14.6957 is called "background". The background property can be set on classes, ids or directly on the HTML element.

```
.background, #background, body{  
background: rgb(151, 120, 99) }
```

If only the background color should be changed can be used:

```
.background{ background-color: rgb(151,  
120, 99) }
```

This example shows the color as background, it is applied via the CSS property "background".

To optimize and compress your CSS code, you can use our [online CSS compressor and optimizer](#) based on csstidy. If you want to create a linear or radial gradient as background or border, check our [CSS Gradient Generator](#).

Hey! You found this booklet interesting? Support Converting Colors with the new Membership Option!

The pro membership hides all ads, plus gives you double the colors in the color bucket, and more awesome pro features!

[Learn more, Memberships starting at \\$2.50/m!](#)

**Follow me
on Twitter!**

@ConvertingColor