

Converting Colors

XYZ(21.8963, 21.4282, 16.9088)

Have a look what the booklet for
XYZ(21.8963, 21.4282, 16.9088)
contains.

| | |
|--|----|
| XYZ(21.9495, 21.5234, 16.9075) | 3 |
| <i>Conversions</i> | 4 |
| <i>Details</i> | 6 |
| <i>Harmonies</i> | 12 |
| <i>Previews</i> | 24 |
| <i>Color Blindness Simulation</i> | 28 |
| <i>CSS Examples</i> | 31 |

Color

**XYZ(21.9495, 21.5234,
16.9075)**

Conversions

Conversions Part 1

| Format | Color |
|---------------|---------------------------|
| Hex | 947B6B |
| RGB | 148, 123, 107 |
| RGB Percent | 58%, 48%, 42% |
| CMY | 0.4196, 0.5176, 0.5804 |
| CMYK | 0.00, 0.17, 0.28, 0.42 |
| HSL | 23°, 16%, 50% |
| HSV | 23°, 28%, 58% |
| XYZ | 21.9495, 21.5234, 16.9075 |
| YIQ | 128.6510, 20.0360, 0.3240 |

Conversions

Conversions Part 2

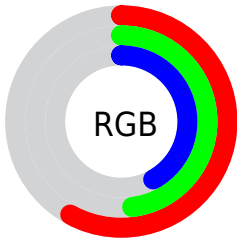
| Format | Color |
|-------------------------------------|--------------------------------|
| R_{YB} | 148, 133, 107 |
| Decimal | 9730923 |
| CIE _{Lab} | 53.52, 7.12, 12.36 |
| CIE _{LCh} | 54, 14.261, 60.072 |
| Yxy | 21.5234, 0.3635, 0.3565 |
| Android (android.graphics.Color) | 4287921003 (0xFF947B6B) |
| YUV | 128.6510, -10.6739, 16.9691 |
| Hunter-Lab | 46.3933, 3.2632, 10.8678 |

Details

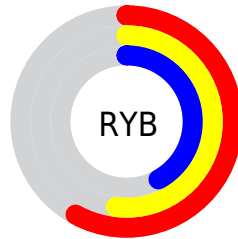
The XYZ color **21.9495, 21.5234, 16.9075** is a dark color, and the websafe version is hex **996666**. A complement of this color would be **19.6596, 21.7656, 31.1819**, and the grayscale version is **20.7759, 21.8579, 23.8032**.

A 20% lighter version of the original color is **46.1301, 45.8251, 38.7616**, and **8.1942, 7.7652, 5.3419** is the 20% darker color. If you saturate the color by 10%, you get **20.1684, 19.1025, 12.7955**, and if you desaturate by 10%, it is **23.9682, 24.2060, 21.7568**.

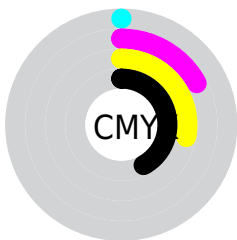
Distribution



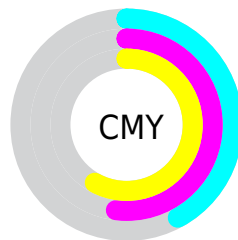
- Red (58%)
- Green (48%)
- Blue (42%)



- Red (58%)
- Yellow (52%)
- Blue (42%)



- Cyan (0%)
- Magenta (17%)
- Yellow (28%)
- Black (42%)



- Cyan (42%)
- Magenta (52%)
- Yellow (58%)

Brightness & Saturation Gradients

These gradients show how the XYZ color 21.9495, 21.5234, 16.9075 changes by changing the brightness by 10 percent. The first figure shows a shift by +10% for each color and the second figure -10%.

Similar to the brightness gradients but the following saturation gradients show a change of the XYZ color 21.9495, 21.5234, 16.9075 by changing the saturation by 10% instead.

■ 21.9495, 21.5234,
16.9075

■ 21.9495, 21.5234,
16.9075

254.9198,
260.0471, 246.6646

■ 13.9362, 13.5071,
10.0073

■ 46.1420, 45.9570,
38.9551

■ 8.1577, 7.7787,
5.2981

■ 63.0519, 63.1431,
54.9397

■ 4.2487, 3.9537,
2.3614

■ 83.6580, 84.1547,
74.7894

■ 1.8438, 1.6477,
0.7653

■ 108.3258,
109.3760, 98.9228

■ 0.5438, 0.3894,
0.0000

137.4204,
139.1915, 127.7585

■ 0.0000, 0.0000,
0.0000

171.3074,

173.9856, 161.7150

210.3521,
214.1427, 201.2109

■ 21.9495, 21.5234,
16.9075

■ 21.9495, 21.5234,
16.9075

■ 20.1684, 19.1025,
12.7955

■ 23.9682, 24.2060,
21.7568

■ 18.6138, 16.9320,
9.3828

■ 26.2318, 27.1552,
27.3760

■ 17.2757, 15.0042,
6.6300

■ 28.7493, 30.3794,
33.7977

■ 16.1432, 13.3098,
4.4930

■ 31.5288, 33.8859,
41.0520

■ 15.2037, 11.8387,
2.9227

■ 34.5780, 37.6815,
49.1674

■ 14.4434, 10.5800,
1.8618

■ 37.9042, 41.7730,
58.1710

■ 13.8390, 9.5186,
1.2056

■ 41.5144, 46.1667,
68.0890

■ 13.7141, 9.2988,
1.0720

■ 45.4155, 50.8688,
78.9462

■ 49.6139, 55.8855,
90.7666

Harmonies

Analogous

The Analogous color harmony consists of three colors that are next to each other on the color wheel.



23.0906, 21.5234, 19.4886



21.9495, 21.5234, 16.9075



20.4537, 21.5234, 16.0260

Triad

The Triadic color harmony groups three colors that are evenly spaced from another and form a triangle on the color wheel.



21.9495, 21.5234, 16.9075



17.6733, 21.5234, 23.4458



21.9561, 21.5234, 31.4455

Complementary

The Complementary color scheme is a pair of colors which are on the opposite of each other on the color wheel.



21.9495, 21.5234, 16.9075



19.6596, 21.7656, 31.1819

Split Complementary

Split-complementary colors differ from the complementary color scheme. The scheme consists of three colors, the original color and two neighbors of the complement color.



20.4610, 21.5234, 32.8353



21.9495, 21.5234, 16.9075



18.0323, 21.5234, 27.8818

Square

The Square scheme is like the rectangle color scheme, but the four colors are evenly spaced on the color wheel.



21.9495, 21.5234, 16.9075



18.0289, 21.5234, 19.5046



19.0344, 21.5234, 31.4583



23.0946, 21.5234, 27.8615

Rectangle

The Rectangle color scheme consists of four colors that form a rectangle on the color wheel.



21.9495, 21.5234, 16.9075



19.4712, 21.5234, 16.4236



19.0344, 21.5234, 31.4583



21.4762, 21.5234, 32.2032

Sweetspot

The Sweet Spot groups the original color and five complimentary colors.



21.9501, 21.5244, 16.9079



46.0923, 47.6654, 47.8194



21.6548, 18.4852, 24.3583



10.3884, 10.7083, 10.5813



71.1368, 74.8414, 81.5023



11.3376, 11.9280, 12.9896

Same Dimension

The Same Dimension uses a secret algorithm to generate beautiful new colors.



21.9501, 21.5244, 16.9079



36.8081, 35.3790, 25.3584



24.7216, 27.0674, 17.8318



5.9754, 6.1646, 6.1154



11.7392, 7.9927, 0.9240



0.1709, 0.1522, 0.0204

Inverse Universe

The Inverse Universe completely reimagines the original color for something new.



19.6596, 21.7656, 31.1819



32.1026, 35.8691, 54.6660



17.1792, 16.8048, 30.3551



5.7760, 6.1859, 7.3593



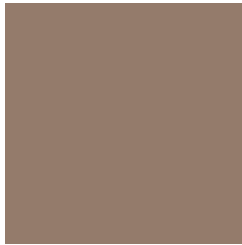
7.7323, 8.1594, 25.0984



0.1234, 0.1573, 0.3168

Previews

White Background



This preview shows how the XYZ color 21.9495, 21.5234, 16.9075 looks on a white background.

Color Contrast Check

Large Text (above 18pt) WCAG AA ✓ Pass

Any Text WCAG AA × Fail

Large Text (above 18pt) WCAG AAA × Fail

Any Text WCAG AAA × Fail

Black Background



This preview shows how the XYZ color 21.9495, 21.5234, 16.9075 looks on a black background.

Color Contrast Check

Large Text (above 18pt) WCAG AA ✓ Pass

Any Text WCAG AA ✓ Pass

Large Text (above 18pt) WCAG AAA ✓ Pass

Any Text WCAG AAA × Fail

If you want to check with other color combinations, try the [Color Contrast Checker](#).

XYZ 21.9495, 21.5234, 16.9075

Background



This preview shows how black text looks on a background with the XYZ color 21.9495, 21.5234, 16.9075.



This preview shows how white text looks on a background with the XYZ color 21.9495, 21.5234,

Color Blindness Simulation

Color vision deficiency is a very complex topic, and I could not describe the different causes any better than Wikipedia does, so if you want to learn more, you should check out their [article about color blindness](#).

Dichromacy



Original Color

21.9495, 21.5234, 16.9075

Protanopia

20.4712, 21.6934, 17.5763

Deuteranopia

21.9495, 21.5234, 16.9075



Tritanopia

23.4414, 21.5972, 23.7021

Trichromacy



Original Color

21.9495, 21.5234, 16.9075

Protanomaly

20.9828, 21.5799, 17.2468

Deuteranomaly

21.9495, 21.5234, 16.9075

Tritanomaly

22.8662, 21.5393, 21.0415

Monochromacy



Original Color

21.9495, 21.5234, 16.9075

Achromatopsia

20.8660, 21.9526, 23.9064

Achromatomaly

21.1939, 21.7935, 21.1787

CSS Examples

Text

The CSS property to change the color of the text to XYZ 21.9495, 21.5234, 16.9075 is called "color". The color property can be set on classes, ids or directly on the HTML element.

This example shows how text in the color rgb(148, 123, 107) looks like.

```
.text, #text, p{  
    color:rgb(148, 123, 107)  
}
```

If you want to add a text shadow in that color use the text-shadow property, you can generate a text shadow directly with our [CSS Text Shadow Generator](#).

Here you see how black text with a 4 pixel rgb(148, 123, 107) colored shadow looks like.

```
.shadow{ text-shadow: 4px 4px 2px rgb(148, 123, 107) }
```

Border

The CSS property to change the border of an element to XYZ 21.9495, 21.5234, 16.9075 is called "border". The border property can be set on classes, ids or directly on the HTML element.

This example shows the color as border, it can be applied via the CSS property "border" or "border-color".

```
.border, #border, table{ border:4px solid rgb(148, 123, 107) }
```


If only the border color should be changed use the property border-color.

```
.border{ border-color:rgb(148, 123, 107) }
```

If you want to add a box shadow in that color use:

Here you see how a box with a 4 pixel rgb(148, 123, 107) colored shadow looks like.

```
.boxshadow{ -moz-box-shadow:4px 4px 4px  
4px rgb(148, 123, 107); -webkit-box-  
shadow:4px 4px 4px 4px rgb(148, 123, 107);  
box-shadow:4px 4px 4px 4px rgb(148, 123,  
107) }
```

Background

The CSS property to change the background color of an element to XYZ 21.9495, 21.5234, 16.9075 is called "background". The background property can be set on classes, ids or directly on the HTML element.

```
.background, #background, body{  
background: rgb(148, 123, 107) }
```

If only the background color should be changed can be used:

```
.background{ background-color: rgb(148,  
123, 107) }
```

This example shows the color as background, it is applied via the CSS property "background".

To optimize and compress your CSS code, you can use our [online CSS compressor and optimizer](#) based on csstidy. If you want to create a linear or radial gradient as background or border, check our [CSS Gradient Generator](#).

Hey! You found this booklet interesting? Support Converting Colors with the new Membership Option!

The pro membership hides all ads, plus gives you double the colors in the color bucket, and more awesome pro features!

[Learn more, Memberships starting at \\$2.50/m!](#)

**Follow me
on Twitter!**

@ConvertingColor