

Converting Colors

XYZ(21.9569, 21.4057, 16.6103)

Have a look what the booklet for
XYZ(21.9569, 21.4057, 16.6103)
contains.

XYZ(21.9555, 21.3492, 16.5993)	3
<i>Conversions</i>	4
<i>Details</i>	6
<i>Harmonies</i>	12
<i>Previews</i>	24
<i>Color Blindness Simulation</i>	28
<i>CSS Examples</i>	31

Color

**XYZ(21.9555, 21.3492,
16.5993)**

Conversions

Conversions Part 1

Format	Color
Hex	957A6A
RGB	149, 122, 106
RGB Percent	58%, 48%, 42%
CMY	0.4157, 0.5216, 0.5843
CMYK	0.00, 0.18, 0.29, 0.42
HSL	22°, 17%, 50%
HSV	22°, 29%, 58%
XYZ	21.9555, 21.3492, 16.5993
YIQ	128.2490, 21.2280, 0.7480

Conversions

Conversions Part 2

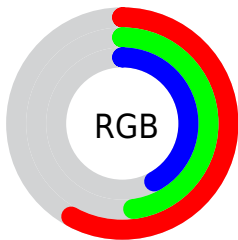
Format	Color
RYB	149, 131, 106
Decimal	9796202
CIELab	53.33, 7.95, 12.69
CIElCh	53, 14.978, 57.927
Yxy	21.3492, 0.3665, 0.3564
Android (android.graphics.Color)	4287986282 (0xFF957A6A)
YUV	128.2490, -10.9688, 18.1986
Hunter-Lab	46.2052, 3.9594, 11.0436

Details

The XYZ color **21.9555, 21.3492, 16.5993** is a dark color, and the websafe version is hex **996666**. A complement of this color would be **19.7561, 22.0087, 31.6408**, and the grayscale version is **20.6364, 21.7111, 23.6434**.

A 20% lighter version of the original color is **46.1237, 45.5438, 38.2581**, and **8.1017, 7.6222, 5.1819** is the 20% darker color. If you saturate the color by 10%, you get **20.1532, 18.8787, 12.5021**, and if you desaturate by 10%, it is **24.0042, 24.0967, 21.4433**.

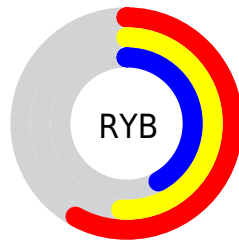
Distribution



Red (58%)

Green (48%)

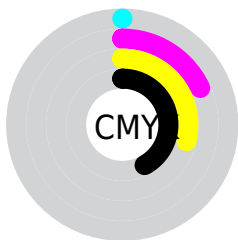
Blue (42%)



Red (58%)

Yellow (51%)

Blue (42%)

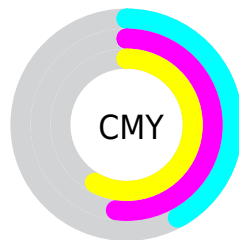


Cyan (0%)

Magenta (18%)

Yellow (29%)

Black (42%)



Cyan (42%)

Magenta (52%)

Yellow (58%)

Brightness & Saturation Gradients

These gradients show how the XYZ color 21.9555, 21.3492, 16.5993 changes by changing the brightness by 10 percent. The first figure shows a shift by +10% for each color and the second figure -10%.

Similar to the brightness gradients but the following saturation gradients show a change of the XYZ color 21.9555, 21.3492, 16.5993 by changing the saturation by 10% instead.

■ 21.9555, 21.3492,
16.5993

■ 21.9555, 21.3492,
16.5993

254.9505,
259.1285, 244.8178

■ 13.9406, 13.3795,
9.7903

■ 46.1518, 45.6680,
38.4167

■ 8.1608, 7.6904,
5.1564

■ 63.0640, 62.7858,
54.2622

■ 4.2507, 3.8975,
2.2790

■ 83.6727, 83.7219,
73.9569

■ 1.8449, 1.6164,
0.7194

■ 108.3431,
108.8605, 97.9194

■ 0.5445, 0.3686,
0.0000

137.4408,
138.5861, 126.5682

■ 0.0000, 0.0000,
0.0000

171.3310,

173.2830, 160.3218

210.3792,
213.3357, 199.5989

■ 21.9555, 21.3492,
16.5993

■ 21.9555, 21.3492,
16.5993

■ 20.1532, 18.8787,
12.5021

■ 24.0042, 24.0967,
21.4433

■ 18.5855, 16.6733,
9.1129

■ 26.3070, 27.1269,
27.0680

■ 17.2422, 14.7243,
6.3908

■ 28.8734, 30.4488,
33.5065

■ 16.1114, 13.0217,
4.2907

■ 31.7119, 34.0702,
40.7897

■ 15.1801, 11.5545,
2.7614

■ 34.8306, 37.9988,
48.9470

■ 14.4335, 10.3106,
1.7435

■ 38.2371, 42.2416,
58.0061

■ 13.8433, 9.2723,
1.1089

■ 41.9390, 46.8058,
67.9938

■ 13.7823, 9.1651,
1.0426

■ 45.9432, 51.6979,
78.9355

■ 50.2567, 56.9247,
90.8559

Harmonies

Analogous

The Analogous color harmony consists of three colors that are next to each other on the color wheel.



23.1088, 21.3492, 19.3885



21.9555, 21.3492, 16.5993



20.4024, 21.3492, 15.5608

Triad

The Triadic color harmony groups three colors that are evenly spaced from another and form a triangle on the color wheel.



21.9555, 21.3492, 16.5993



17.3927, 21.3492, 22.9309



21.7546, 21.3492, 31.8529

Complementary

The Complementary color scheme is a pair of colors which are on the opposite of each other on the color wheel.



21.9555, 21.3492, 16.5993



19.7561, 22.0087, 31.6408

Split Complementary

Split-complementary colors differ from the complementary color scheme. The scheme consists of three colors, the original color and two neighbors of the complement color.



20.1816, 21.3492, 33.1177



21.9555, 21.3492, 16.5993



17.7135, 21.3492, 27.5832

Square

The Square scheme is like the rectangle color scheme, but the four colors are evenly spaced on the color wheel.



21.9555, 21.3492, 16.5993



17.8145, 21.3492, 18.9074



18.7143, 21.3492, 31.4645



22.9887, 21.3492, 28.2014

Rectangle

The Rectangle color scheme consists of four colors that form a rectangle on the color wheel.



21.9555, 21.3492, 16.5993



19.3670, 21.3492, 15.8832



18.7143, 21.3492, 31.4645



21.2455, 21.3492, 32.5906

Sweetspot

The Sweet Spot groups the original color and five complimentary colors.



21.9561, 21.3502, 16.5997



46.9712, 48.3964, 48.1261



21.7985, 18.3978, 24.6774



10.2823, 10.5591, 10.3513



71.1368, 74.8414, 81.5023



11.3376, 11.9280, 12.9896

Same Dimension

The Same Dimension uses a secret algorithm to generate beautiful new colors.



21.9561, 21.3502, 16.5997



37.0618, 35.1505, 24.5599



24.8587, 27.1555, 17.5673



5.9671, 6.1479, 6.1126



11.6263, 7.7669, 0.8864



0.1689, 0.1482, 0.0197

Inverse Universe

The Inverse Universe completely reimagines the original color for something new.



19.7561, 22.0087, 31.6408



32.4205, 36.5306, 56.2636



17.1337, 16.7640, 30.7667



5.7845, 6.2031, 7.3622



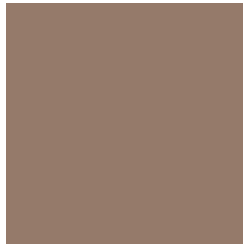
7.9299, 8.5546, 25.1643



0.1254, 0.1614, 0.3174

Previews

White Background



This preview shows how the XYZ color 21.9555, 21.3492, 16.5993 looks on a white background.

Color Contrast Check

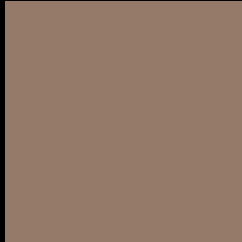
Large Text (above 18pt) WCAG AA ✓ Pass

Any Text WCAG AA × Fail

Large Text (above 18pt) WCAG AAA × Fail

Any Text WCAG AAA × Fail

Black Background



This preview shows how the XYZ color 21.9555, 21.3492, 16.5993 looks on a black background.

Color Contrast Check

Large Text (above 18pt) WCAG AA ✓ Pass

Any Text WCAG AA ✓ Pass

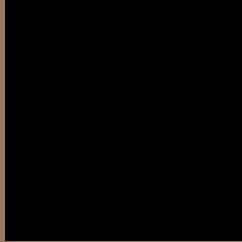
Large Text (above 18pt) WCAG AAA ✓ Pass

Any Text WCAG AAA × Fail

If you want to check with other color combinations, try the [Color Contrast Checker](#).

XYZ 21.9555, 21.3492, 16.5993

Background



This preview shows how black text looks on a background with the XYZ color 21.9555, 21.3492, 16.5993.



This preview shows how white text looks on a background with the XYZ color 21.9555, 21.3492,

Color Blindness Simulation

Color vision deficiency is a very complex topic, and I could not describe the different causes any better than Wikipedia does, so if you want to learn more, you should check out their [article about color blindness](#).

Dichromacy



Original Color

21.9555, 21.3492, 16.5993

Protanopia

20.1812, 21.3512, 17.5255

Deuteranopia

21.7171, 21.4096, 16.6235



Tritanopia

23.2556, 21.3315, 23.3138

Trichromacy



Original Color

21.9555, 21.3492, 16.5993

Protanomaly

20.6879, 21.2389, 17.1965

Deuteranomaly

21.8972, 21.5024, 16.6319

Tritanomaly

22.6843, 21.2730, 20.6798

Monochromacy



Original Color

21.9555, 21.3492, 16.5993

Achromatopsia

20.5175, 21.5861, 23.5072

Achromatomaly

21.0044, 21.5120, 20.8145

CSS Examples

Text

The CSS property to change the color of the text to XYZ 21.9555, 21.3492, 16.5993 is called "color". The color property can be set on classes, ids or directly on the HTML element.

This example shows how text in the color `rgb(149, 122, 106)` looks like.

```
.text, #text, p{  
    color:rgb(149, 122, 106)  
}
```

If you want to add a text shadow in that color use the text-shadow property, you can generate a text shadow directly with our [CSS Text Shadow Generator](#).

Here you see how black text with a 4 pixel rgb(149, 122, 106) colored shadow looks like.

```
.shadow{ text-shadow: 4px 4px 2px rgb(149, 122, 106) }
```

Border

The CSS property to change the border of an element to XYZ 21.9555, 21.3492, 16.5993 is called "border". The border property can be set on classes, ids or directly on the HTML element.

This example shows the color as border, it can be applied via the CSS property "border" or "border-color".

```
.border, #border, table{ border:4px solid rgb(149, 122, 106) }
```


If only the border color should be changed use the property `border-color`.

```
.border{ border-color:rgb(149, 122, 106) }
```

If you want to add a box shadow in that color use:

Here you see how a box with a 4 pixel `rgb(149, 122, 106)` colored shadow looks like.

```
.boxshadow{ -moz-box-shadow:4px 4px 4px  
4px rgb(149, 122, 106); -webkit-box-  
shadow:4px 4px 4px 4px rgb(149, 122, 106);  
box-shadow:4px 4px 4px 4px rgb(149, 122,  
106) }
```

Background

The CSS property to change the background color of an element to XYZ 21.9555, 21.3492, 16.5993 is called "background". The background property can be set on classes, ids or directly on the HTML element.

```
.background, #background, body{  
background: rgb(149, 122, 106) }
```

If only the background color should be changed can be used:

```
.background{ background-color: rgb(149,  
122, 106) }
```

This example shows the color as background, it is applied via the CSS property "background".

To optimize and compress your CSS code, you can use our [online CSS compressor and optimizer](#) based on csstidy. If you want to create a linear or radial gradient as background or border, check our [CSS Gradient Generator](#).

Hey! You found this booklet interesting? Support Converting Colors with the new Membership Option!

The pro membership hides all ads, plus gives you double the colors in the color bucket, and more awesome pro features!

[Learn more, Memberships starting at \\$2.50/m!](#)

**Follow me
on Twitter!**

@ConvertingColor