

Converting Colors

XYZ(21.9720, 16.3082, 10.2661)

Have a look what the booklet for
XYZ(21.9720, 16.3082, 10.2661)
contains.

XYZ(22.0643, 16.3746, 10.1813)	3
<i>Conversions</i>	4
<i>Details</i>	6
<i>Harmonies</i>	12
<i>Previews</i>	24
<i>Color Blindness Simulation</i>	28
<i>CSS Examples</i>	31

Color

**XYZ(22.0643, 16.3746,
10.1813)**

Conversions

Conversions Part 1

Format	Color
Hex	AC5853
RGB	172, 88, 83
RGB Percent	67%, 35%, 33%
CMY	0.3255, 0.6549, 0.6745
CMYK	0.00, 0.49, 0.52, 0.33
HSL	3°, 35%, 50%
HSV	3°, 52%, 67%
XYZ	22.0643, 16.3746, 10.1813
YIQ	112.5460, 51.6690, 16.2530

Conversions

Conversions Part 2

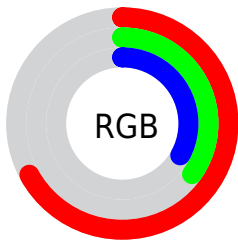
Format	Color
RYB	172, 88, 83
Decimal	11294803
CIELab	47.46, 33.75, 18.64
CIElCh	47, 38.555, 28.912
Yxy	16.3746, 0.4538, 0.3368
Android (android.graphics.Color)	4289484883 (0xFFAC5853)
YUV	112.5460, -14.5662, 52.1412
Hunter-Lab	40.4655, 26.5145, 13.4083

Details

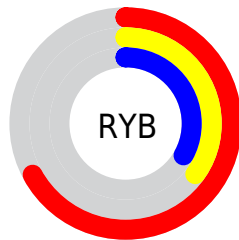
The XYZ color **22.0643, 16.3746, 10.1813** is a dark color, and the websafe version is hex **CC6666**. A complement of this color would be **24.8316, 32.4533, 43.9850**, and the grayscale version is **15.5931, 16.4052, 17.8652**.

A 20% lighter version of the original color is **46.4979, 37.4110, 26.6001**, and **8.2778, 5.3040, 2.4212** is the 20% darker color. If you saturate the color by 10%, you get **20.2934, 13.7670, 6.7112**, and if you desaturate by 10%, it is **24.2975, 19.6432, 14.6185**.

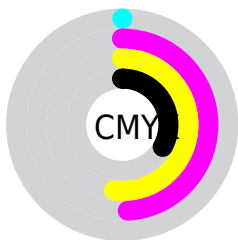
Distribution



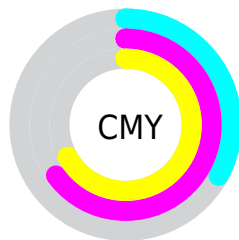
- Red (67%)
- Green (35%)
- Blue (33%)



- Red (67%)
- Yellow (35%)
- Blue (33%)



- Cyan (0%)
- Magenta (49%)
- Yellow (52%)
- Black (33%)



- Cyan (33%)
- Magenta (65%)
- Yellow (67%)

Brightness & Saturation Gradients

These gradients show how the XYZ color 22.0643, 16.3746, 10.1813 changes by changing the brightness by 10 percent. The first figure shows a shift by +10% for each color and the second figure -10%.

Similar to the brightness gradients but the following saturation gradients show a change of the XYZ color 22.0643, 16.3746, 10.1813 by changing the saturation by 10% instead.

■ 22.0643, 16.3746,
10.1813

■ 22.0643, 16.3746,
10.1813

255.5079,
231.5421, 202.4928

■ 14.0210, 9.7896,
5.4122

■ 46.3303, 37.2473,
26.7491

■ 8.2171, 5.2597,
2.4281

■ 63.2838, 52.3038,
39.3848

■ 4.2871, 2.4004,
0.8017

■ 83.9380, 70.9530,
55.4798

■ 1.8658, 0.8261,
0.0000

■ 108.6583, 93.5792,
75.4526

■ 0.5569, 0.0000,
0.0000

■ 137.8101,
120.5668, 99.7218

■ 0.0000, 0.0000,
0.0000

171.7587,

152.3002, 128.7058

210.8696,
189.1639, 162.8233

■ 22.0643, 16.3746,
10.1813

■ 22.0643, 16.3746,
10.1813

■ 20.2934, 13.7670,
6.7112

■ 24.2975, 19.6432,
14.6185

■ 18.9511, 11.7729,
4.1353

■ 27.0209, 23.6109,
20.0866

■ 18.0015, 10.3429,
2.3718

■ 30.2619, 28.3158,
26.6451

■ 17.4017, 9.4186,
1.3234

■ 34.0452, 33.7928,
34.3485

■ 17.1182, 8.9806,
0.8312

■ 38.3942, 40.0742,
43.2479

■ 43.3307, 47.1907,
53.3912

■ 48.8755, 55.1715,
64.8236

■ 55.0483, 64.0440,
77.5883

■ 61.8680, 73.8349,
91.7261

Harmonies

Analogous

The Analogous color harmony consists of three colors that are next to each other on the color wheel.



23.1141, 16.3746, 18.1895



22.0643, 16.3746, 10.1813



19.2150, 16.3746, 6.0694

Triad

The Triadic color harmony groups three colors that are evenly spaced from another and form a triangle on the color wheel.



22.0643, 16.3746, 10.1813



10.5807, 16.3746, 9.7605



15.4389, 16.3746, 44.0916

Complementary

The Complementary color scheme is a pair of colors which are on the opposite of each other on the color wheel.



22.0643, 16.3746, 10.1813



24.8316, 32.4533, 43.9850

Split Complementary

Split-complementary colors differ from the complementary color scheme. The scheme consists of three colors, the original color and two neighbors of the complement color.



12.4068, 16.3746, 39.3300



22.0643, 16.3746, 10.1813



9.8675, 16.3746, 17.4736

Square

The Square scheme is like the rectangle color scheme, but the four colors are evenly spaced on the color wheel.



22.0643, 16.3746, 10.1813



12.5938, 16.3746, 5.8965



10.4844, 16.3746, 28.5816



18.9669, 16.3746, 39.9397

Rectangle

The Rectangle color scheme consists of four colors that form a rectangle on the color wheel.



22.0643, 16.3746, 10.1813



16.8638, 16.3746, 4.9920



10.4844, 16.3746, 28.5816



14.3319, 16.3746, 43.4575

Sweetspot

The Sweet Spot groups the original color and five complimentary colors.



22.0647, 16.3755, 10.1816



58.5204, 56.6139, 55.7010



27.1325, 17.7677, 38.8257



12.4250, 11.8795, 11.5090



82.5889, 86.8899, 94.6231



15.4596, 16.2647, 17.7123

Same Dimension

The Same Dimension uses a secret algorithm to generate beautiful new colors.



22.0647, 16.3755, 10.1816



36.4378, 24.4169, 11.4435



26.8191, 25.8842, 11.7664



8.0401, 8.0849, 8.3502



12.7525, 6.7105, 0.6231



0.3662, 0.2096, 0.0212

Inverse Universe

The Inverse Universe completely reimagines the original color for something new.



24.8316, 32.4533, 43.9850



41.9839, 56.7555, 79.5479



18.1029, 18.9960, 41.7421



8.1972, 8.9938, 10.2566



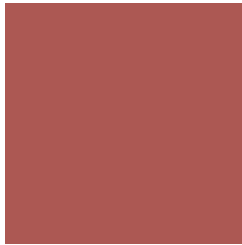
15.2129, 21.5596, 32.4041



0.4346, 0.6226, 0.9052

Previews

White Background



This preview shows how the XYZ color 22.0643, 16.3746, 10.1813 looks on a white background.

Color Contrast Check

Large Text (above 18pt) WCAG AA ✓ Pass

Any Text WCAG AA ✓ Pass

Large Text (above 18pt) WCAG AAA ✓ Pass

Any Text WCAG AAA × Fail

Black Background



This preview shows how the XYZ color 22.0643, 16.3746, 10.1813 looks on a black background.

Color Contrast Check

Large Text (above 18pt) WCAG AA ✓ Pass

Any Text WCAG AA × Fail

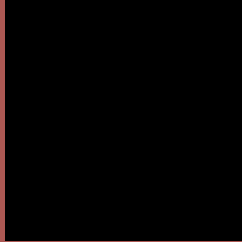
Large Text (above 18pt) WCAG AAA × Fail

Any Text WCAG AAA × Fail

If you want to check with other color combinations, try the [Color Contrast Checker](#).

XYZ 22.0643, 16.3746, 10.1813

Background



This preview shows how black text looks on a background with the XYZ color 22.0643, 16.3746, 10.1813.



This preview shows how white text looks on a background with the XYZ color 22.0643, 16.3746,

Color Blindness Simulation

Color vision deficiency is a very complex topic, and I could not describe the different causes any better than Wikipedia does, so if you want to learn more, you should check out their [article about color blindness](#).

Dichromacy



Original Color

22.0643, 16.3746, 10.1813

Protanopia

15.5333, 16.5403, 12.9636

Deuteranopia

16.7655, 16.4405, 9.6868



Tritanopia

22.6176, 16.4909, 12.3469

Trichromacy



Original Color

22.0643, 16.3746, 10.1813

Protanomaly

17.2770, 16.0421, 11.8587

Deuteranomaly

18.3144, 16.1824, 9.7477

Tritanomaly

22.4449, 16.4219, 11.4380

Monochromacy



Original Color

22.0643, 16.3746, 10.1813

Achromatopsia

15.6958, 16.5132, 17.9829

Achromatomaly

17.1801, 15.9283, 14.7393

CSS Examples

Text

The CSS property to change the color of the text to XYZ 22.0643, 16.3746, 10.1813 is called "color". The color property can be set on classes, ids or directly on the HTML element.

This example shows how text in the color `rgb(172, 88, 83)` looks like.

```
.text, #text, p{  
    color:rgb(172, 88, 83)  
}
```

If you want to add a text shadow in that color use the text-shadow property, you can generate a text shadow directly with our [CSS Text Shadow Generator](#).

Here you see how black text with a 4 pixel rgb(172, 88, 83) colored shadow looks like.

```
.shadow{ text-shadow: 4px 4px 2px rgb(172, 88, 83) }
```

Border

The CSS property to change the border of an element to XYZ 22.0643, 16.3746, 10.1813 is called "border". The border property can be set on classes, ids or directly on the HTML element.

This example shows the color as border, it can be applied via the CSS property "border" or "border-color".

```
.border, #border, table{ border:4px solid rgb(172, 88, 83) }
```


If only the border color should be changed use the property border-color.

```
.border{ border-color:rgb(172, 88, 83) }
```

If you want to add a box shadow in that color use:

Here you see how a box with a 4 pixel rgb(172, 88, 83) colored shadow looks like.

```
.boxshadow{ -moz-box-shadow:4px 4px 4px  
4px rgb(172, 88, 83); -webkit-box-  
shadow:4px 4px 4px 4px rgb(172, 88, 83);  
box-shadow:4px 4px 4px 4px rgb(172, 88,  
83) }
```

Background

The CSS property to change the background color of an element to XYZ 22.0643, 16.3746, 10.1813 is called "background". The background property can be set on classes, ids or directly on the HTML element.

```
.background, #background, body{  
background: rgb(172, 88, 83) }
```

If only the background color should be changed can be used:

```
.background{ background-color: rgb(172, 88,  
83) }
```

This example shows the color as background, it is applied via the CSS property "background".

To optimize and compress your CSS code, you can use our [online CSS compressor and optimizer](#) based on csstidy. If you want to create a linear or radial gradient as background or border, check our [CSS Gradient Generator](#).

Hey! You found this booklet interesting? Support Converting Colors with the new Membership Option!

The pro membership hides all ads, plus gives you double the colors in the color bucket, and more awesome pro features!

[Learn more, Memberships starting at \\$2.50/m!](#)

**Follow me
on Twitter!**

@ConvertingColor