

Converting Colors

XYZ(21.9798, 19.3501, 9.5430)

Have a look what the booklet for
XYZ(21.9798, 19.3501, 9.5430)
contains.

XYZ(21.9125, 19.2596, 9.5837)	3
<i>Conversions</i>	4
<i>Details</i>	6
<i>Harmonies</i>	12
<i>Previews</i>	24
<i>Color Blindness Simulation</i>	28
<i>CSS Examples</i>	31

Color

**XYZ(21.9125, 19.2596,
9.5837)**

Conversions

Conversions Part 1

Format	Color
Hex	A36D4D
RGB	163, 109, 77
RGB Percent	64%, 43%, 30%
CMY	0.3608, 0.5725, 0.6980
CMYK	0.00, 0.33, 0.53, 0.36
HSL	22°, 36%, 47%
HSV	22°, 53%, 64%
XYZ	21.9125, 19.2596, 9.5837
YIQ	121.4980, 42.4560, 1.4960

Conversions

Conversions Part 2

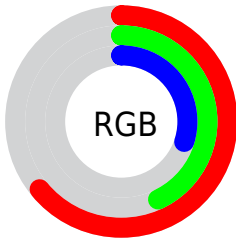
Format	Color
R_{YB}	163, 128, 77
Decimal	10710349
CIE _{Lab}	50.99, 17.84, 26.53
CIE _{LCh}	51, 31.973, 56.086
Yxy	19.2596, 0.4317, 0.3795
Android (android.graphics.Color)	4288900429 (0xFFA36D4D)
YUV	121.4980, -21.9375, 36.3973
Hunter-Lab	43.8858, 12.3264, 17.7724

Details

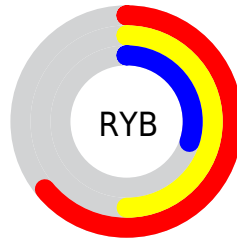
The XYZ color **21.9125, 19.2596, 9.5837** is a dark color, and the websafe version is hex **996633**. A complement of this color would be **17.7874, 20.4540, 37.6609**, and the grayscale version is **18.3950, 19.3530, 21.0754**.

A 20% lighter version of the original color is **46.0260, 42.2117, 25.4605**, and **8.1138, 6.6299, 2.2186** is the 20% darker color. If you saturate the color by 10%, you get **20.3786, 17.0004, 6.5801**, and if you desaturate by 10%, it is **23.7187, 21.8327, 13.3900**.

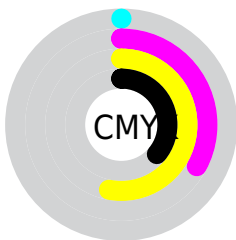
Distribution



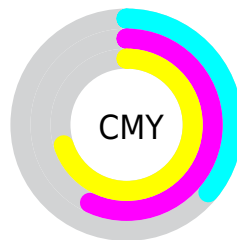
- Red (64%)
- Green (43%)
- Blue (30%)



- Red (64%)
- Yellow (50%)
- Blue (30%)



- Cyan (0%)
- Magenta (33%)
- Yellow (53%)
- Black (36%)



- Cyan (36%)
- Magenta (57%)
- Yellow (70%)

Brightness & Saturation Gradients

These gradients show how the XYZ color 21.9125, 19.2596, 9.5837 changes by changing the brightness by 10 percent. The first figure shows a shift by +10% for each color and the second figure -10%.

Similar to the brightness gradients but the following saturation gradients show a change of the XYZ color 21.9125, 19.2596, 9.5837 by changing the saturation by 10% instead.

■ 21.9125, 19.2596,
9.5837

■ 21.9125, 19.2596,
9.5837

254.7299,
247.8782, 198.0501

■ 13.9089, 11.8580,
5.0218

■ 46.0813, 42.1723,
25.6049

■ 8.1386, 6.6471,
2.2011

■ 62.9771, 58.4522,
37.9014

■ 4.2363, 3.2424,
0.6750

■ 83.5677, 78.4603,
53.6132

■ 1.8367, 1.2595,
0.0000

■ 108.2185,
102.5811, 73.1587

■ 0.5396, 0.1095,
0.0000

■ 137.2947,
131.1988, 96.9567

■ 0.0000, 0.0000,
0.0000

171.1618,

164.6980, 125.4255

210.1851,
203.4630, 158.9838

■ 21.9125, 19.2596,
9.5837

■ 21.9125, 19.2596,
9.5837

■ 20.3786, 17.0004,
6.5801

■ 23.7187, 21.8327,
13.3900

■ 19.1004, 15.0392,
4.3187

■ 25.8097, 24.7290,
18.0511

■ 18.0610, 13.3626,
2.7323

■ 28.1991, 27.9610,
23.6159

■ 17.2406, 11.9550,
1.7403

■ 30.8988, 31.5395,
30.1296

■ 16.7548, 11.0876,
1.2570

■ 33.9203, 35.4749,
37.6339

■ 37.2743, 39.7771,
46.1683

■ 40.9709, 44.4557,
55.7699

■ 45.0201, 49.5196,
66.4743

■ 49.4312, 54.9778,
78.3151

Harmonies

Analogous

The Analogous color harmony consists of three colors that are next to each other on the color wheel.



24.3284, 19.2596, 14.2068



21.9125, 19.2596, 9.5837



18.7239, 19.2596, 7.9524

Triad

The Triadic color harmony groups three colors that are evenly spaced from another and form a triangle on the color wheel.



21.9125, 19.2596, 9.5837



12.8844, 19.2596, 19.8040



21.1119, 19.2596, 40.8232

Complementary

The Complementary color scheme is a pair of colors which are on the opposite of each other on the color wheel.



21.9125, 19.2596, 9.5837



17.7874, 20.4540, 37.6609

Split Complementary

Split-complementary colors differ from the complementary color scheme. The scheme consists of three colors, the original color and two neighbors of the complement color.



17.8937, 19.2596, 43.5857



21.9125, 19.2596, 9.5837



13.3693, 19.2596, 29.5984

Square

The Square scheme is like the rectangle color scheme, but the four colors are evenly spaced on the color wheel.



21.9125, 19.2596, 9.5837



13.7087, 19.2596, 12.6770



15.1181, 19.2596, 38.9977



23.8301, 19.2596, 32.2655

Rectangle

The Rectangle color scheme consists of four colors that form a rectangle on the color wheel.



21.9125, 19.2596, 9.5837



16.6719, 19.2596, 8.2931



15.1181, 19.2596, 38.9977



20.0428, 19.2596, 42.5497

Sweetspot

The Sweet Spot groups the original color and five complimentary colors.



21.9130, 19.2606, 9.5841



53.5626, 54.1460, 49.6351



21.8867, 14.7458, 23.3318



11.8171, 11.8791, 10.6337



78.6606, 82.7571, 90.1225



14.0027, 14.7319, 16.0430

Same Dimension

The Same Dimension uses a secret algorithm to generate beautiful new colors.



21.9130, 19.2606, 9.5841



36.1470, 29.9199, 11.1362



27.5966, 30.6278, 11.4786



7.2796, 7.4977, 7.4436



13.0622, 8.6983, 0.9905



0.3188, 0.2714, 0.0356

Inverse Universe

The Inverse Universe completely reimagines the original color for something new.



17.7874, 20.4540, 37.6609



27.9325, 32.2198, 66.8030



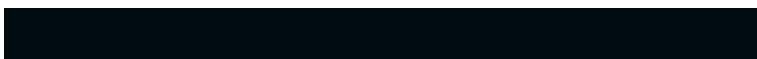
13.1997, 11.2786, 36.1317



7.0535, 7.5660, 8.9917



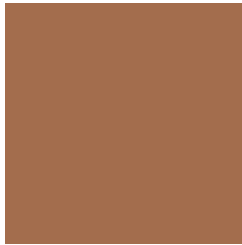
8.9013, 9.5819, 28.3101



0.2300, 0.2873, 0.6092

Previews

White Background



This preview shows how the XYZ color 21.9125, 19.2596, 9.5837 looks on a white background.

Color Contrast Check

Large Text (above 18pt) WCAG AA ✓ Pass

Any Text WCAG AA × Fail

Large Text (above 18pt) WCAG AAA × Fail

Any Text WCAG AAA × Fail

Black Background



This preview shows how the XYZ color 21.9125, 19.2596, 9.5837 looks on a black background.

Color Contrast Check

Large Text (above 18pt) WCAG AA ✓ Pass

Any Text WCAG AA ✓ Pass

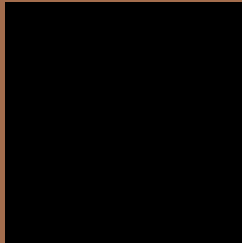
Large Text (above 18pt) WCAG AAA ✓ Pass

Any Text WCAG AAA × Fail

If you want to check with other color combinations, try the [Color Contrast Checker](#).

XYZ 21.9125, 19.2596, 9.5837

Background



This preview shows how black text looks on a background with the XYZ color 21.9125, 19.2596, 9.5837.



This preview shows how white text looks on a background with the XYZ color 21.9125, 19.2596,

Color Blindness Simulation

Color vision deficiency is a very complex topic, and I could not describe the different causes any better than Wikipedia does, so if you want to learn more, you should check out their [article about color blindness](#).

Dichromacy



Original Color

21.9125, 19.2596, 9.5837

Protanopia

17.9982, 19.4338, 10.7851

Deuteranopia

19.5825, 19.2156, 9.5144



Tritanopia

23.6008, 19.1775, 17.7870

Trichromacy



Original Color

21.9125, 19.2596, 9.5837

Protanomaly

19.1369, 19.1414, 10.2755

Deuteranomaly

20.3465, 19.1044, 9.4526

Tritanomaly

22.9232, 19.2083, 14.3038

Monochromacy



Original Color

21.9125, 19.2596, 9.5837

Achromatopsia

18.4984, 19.4618, 21.1939

Achromatomaly

19.2793, 19.0816, 16.3026

CSS Examples

Text

The CSS property to change the color of the text to XYZ 21.9125, 19.2596, 9.5837 is called "color". The color property can be set on classes, ids or directly on the HTML element.

This example shows how text in the color `rgb(163, 109, 77)` looks like.

```
.text, #text, p{  
    color:rgb(163, 109, 77)  
}
```

If you want to add a text shadow in that color use the text-shadow property, you can generate a text shadow directly with our [CSS Text Shadow Generator](#).

Here you see how black text with a 4 pixel rgb(163, 109, 77) colored shadow looks like.

```
.shadow{ text-shadow: 4px 4px 2px rgb(163, 109, 77) }
```

Border

The CSS property to change the border of an element to XYZ 21.9125, 19.2596, 9.5837 is called "border". The border property can be set on classes, ids or directly on the HTML element.

This example shows the color as border, it can be applied via the CSS property "border" or "border-color".

```
.border, #border, table{ border:4px solid rgb(163, 109, 77) }
```


If only the border color should be changed use the property `border-color`.

```
.border{ border-color:rgb(163, 109, 77) }
```

If you want to add a box shadow in that color use:

Here you see how a box with a 4 pixel `rgb(163, 109, 77)` colored shadow looks like.

```
.boxshadow{ -moz-box-shadow:4px 4px 4px  
4px rgb(163, 109, 77); -webkit-box-  
shadow:4px 4px 4px 4px rgb(163, 109, 77);  
box-shadow:4px 4px 4px 4px rgb(163, 109,  
77) }
```

Background

The CSS property to change the background color of an element to XYZ 21.9125, 19.2596, 9.5837 is called "background". The background property can be set on classes, ids or directly on the HTML element.

```
.background, #background, body{  
background: rgb(163, 109, 77) }
```

If only the background color should be changed can be used:

```
.background{ background-color: rgb(163,  
109, 77) }
```

This example shows the color as background, it is applied via the CSS property "background".

To optimize and compress your CSS code, you can use our [online CSS compressor and optimizer](#) based on csstidy. If you want to create a linear or radial gradient as background or border, check our [CSS Gradient Generator](#).

Hey! You found this booklet interesting? Support Converting Colors with the new Membership Option!

The pro membership hides all ads, plus gives you double the colors in the color bucket, and more awesome pro features!

[Learn more, Memberships starting at \\$2.50/m!](#)

**Follow me
on Twitter!**

@ConvertingColor