

Converting Colors

XYZ(22.1279, 19.0869, 10.3967)

Have a look what the booklet for
XYZ(22.1279, 19.0869, 10.3967)
contains.

XYZ(22.0527, 19.0020, 10.2900)	3
<i>Conversions</i>	4
<i>Details</i>	6
<i>Harmonies</i>	12
<i>Previews</i>	24
<i>Color Blindness Simulation</i>	28
<i>CSS Examples</i>	31

Color

**XYZ(22.0527, 19.0020,
10.2900)**

Conversions

Conversions Part 1

Format	Color
Hex	A46B51
RGB	164, 107, 81
RGB Percent	64%, 42%, 32%
CMY	0.3569, 0.5804, 0.6823
CMYK	0.00, 0.35, 0.51, 0.36
HSL	19°, 34%, 48%
HSV	19°, 51%, 64%
XYZ	22.0527, 19.0020, 10.2900
YIQ	121.0790, 42.3180, 3.9980

Conversions

Conversions Part 2

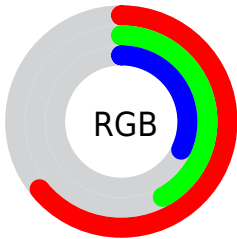
Format	Color
RYB	164, 119, 81
Decimal	10775377
CIELab	50.69, 19.79, 23.88
CIElCh	51, 31.013, 50.361
Yxy	19.0020, 0.4295, 0.3701
Android (android.graphics.Color)	4288965457 (0xFFA46B51)
YUV	121.0790, -19.7589, 37.6417
Hunter-Lab	43.5913, 14.0179, 16.5181

Details

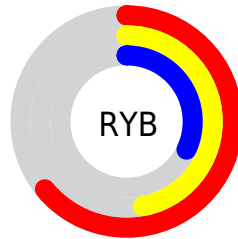
The XYZ color **22.0527, 19.0020, 10.2900** is a dark color, and the websafe version is hex **996633**. A complement of this color would be **19.1821, 22.6054, 38.4740**, and the grayscale version is **18.2522, 19.2028, 20.9118**.

A 20% lighter version of the original color is **46.3137, 41.8071, 27.1013**, and **8.1891, 6.5065, 2.4933** is the 20% darker color. If you saturate the color by 10%, you get **20.4118, 16.5884, 7.0667**, and if you desaturate by 10%, it is **23.9960, 21.7828, 14.3473**.

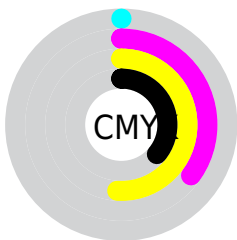
Distribution



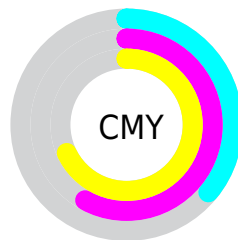
- Red (64%)
- Green (42%)
- Blue (32%)



- Red (64%)
- Yellow (47%)
- Blue (32%)



- Cyan (0%)
- Magenta (35%)
- Yellow (51%)
- Black (36%)



- Cyan (36%)
- Magenta (58%)
- Yellow (68%)

Brightness & Saturation Gradients

These gradients show how the XYZ color 22.0527, 19.0020, 10.2900 changes by changing the brightness by 10 percent. The first figure shows a shift by +10% for each color and the second figure -10%.

Similar to the brightness gradients but the following saturation gradients show a change of the XYZ color 22.0527, 19.0020, 10.2900 by changing the saturation by 10% instead.

■ 22.0527, 19.0020,
10.2900

■ 22.0527, 19.0020,
10.2900

255.4486,
246.4598, 203.2889

■ 14.0124, 11.6717,
5.4835

■ 46.3113, 41.7375,
26.9558

■ 8.2111, 6.5206,
2.4700

■ 63.2603, 57.9115,
39.6523

■ 4.2833, 3.1641,
0.8242

■ 83.9097, 77.8022,
55.8159

■ 1.8636, 1.2180,
0.0000

■ 108.6247,
101.7939, 75.8651

■ 0.5555, 0.0763,
0.0000

■ 137.7708,
130.2712, 100.2184

■ 0.0000, 0.0000,
0.0000

171.7132,

163.6183, 129.2945

210.8173,
202.2197, 163.5118

■ 22.0527, 19.0020,
10.2900

■ 22.0527, 19.0020,
10.2900

■ 20.4118, 16.5884,
7.0667

■ 23.9960, 21.7828,
14.3473

■ 19.0552, 14.5231,
4.6170

■ 26.2557, 24.9429,
19.2908

■ 17.9647, 12.7897,
2.8742

■ 28.8464, 28.4975,
25.1700

■ 17.1192, 11.3688,
1.7592

■ 31.7816, 32.4598,
32.0301

■ 16.5103, 10.2936,
1.1167

■ 35.0736, 36.8427,
39.9134

■ 38.7345, 41.6583,
48.8599

■ 42.7755, 46.9181,
58.9072

■ 47.2074, 52.6335,
70.0912

■ 52.0408, 58.8151,
82.4462

Harmonies

Analogous

The Analogous color harmony consists of three colors that are next to each other on the color wheel.



24.1144, 19.0020, 15.3946



22.0527, 19.0020, 10.2900



19.0575, 19.0020, 8.1846

Triad

The Triadic color harmony groups three colors that are evenly spaced from another and form a triangle on the color wheel.



22.0527, 19.0020, 10.2900



12.8889, 19.0020, 18.0113



20.1720, 19.0020, 40.6892

Complementary

The Complementary color scheme is a pair of colors which are on the opposite of each other on the color wheel.



22.0527, 19.0020, 10.2900



19.1821, 22.6054, 38.4740

Split Complementary

Split-complementary colors differ from the complementary color scheme. The scheme consists of three colors, the original color and two neighbors of the complement color.



17.0996, 19.0020, 41.9734



22.0527, 19.0020, 10.2900



13.1160, 19.0020, 27.0786

Square

The Square scheme is like the rectangle color scheme, but the four colors are evenly spaced on the color wheel.



22.0527, 19.0020, 10.2900



13.9228, 19.0020, 11.7419



14.5823, 19.0020, 36.4456



22.9469, 19.0020, 33.3136

Rectangle

The Rectangle color scheme consists of four colors that form a rectangle on the color wheel.



22.0527, 19.0020, 10.2900



17.0298, 19.0020, 8.2043



14.5823, 19.0020, 36.4456



19.1327, 19.0020, 41.9148

Sweetspot

The Sweet Spot groups the original color and five complimentary colors.



22.0532, 19.0029, 10.2904



55.1203, 55.4658, 52.0947



22.9197, 15.6445, 26.2761



11.8200, 11.8145, 10.8514



78.6606, 82.7571, 90.1225



14.0027, 14.7319, 16.0430

Same Dimension

The Same Dimension uses a secret algorithm to generate beautiful new colors.



22.0532, 19.0029, 10.2904



36.6395, 29.4938, 12.0547



27.2910, 29.4785, 12.0363



7.2464, 7.4313, 7.4325



12.6979, 7.9698, 0.8691



0.3074, 0.2486, 0.0318

Inverse Universe

The Inverse Universe completely reimagines the original color for something new.



19.1821, 22.6054, 38.4740



30.7721, 36.7169, 69.2175



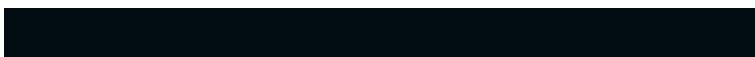
14.4246, 13.0905, 36.8882



7.0880, 7.6351, 9.0032



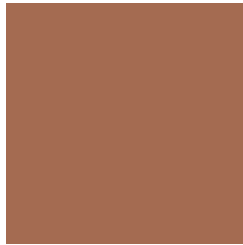
9.6769, 11.1333, 28.5687



0.2426, 0.3124, 0.6134

Previews

White Background



This preview shows how the XYZ color 22.0527, 19.0020, 10.2900 looks on a white background.

Color Contrast Check

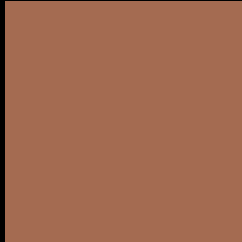
Large Text (above 18pt) WCAG AA ✓ Pass

Any Text WCAG AA × Fail

Large Text (above 18pt) WCAG AAA × Fail

Any Text WCAG AAA × Fail

Black Background



This preview shows how the XYZ color 22.0527, 19.0020, 10.2900 looks on a black background.

Color Contrast Check

Large Text (above 18pt) WCAG AA ✓ Pass

Any Text WCAG AA ✓ Pass

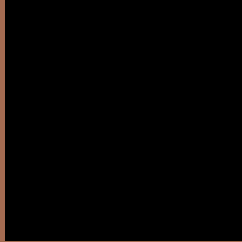
Large Text (above 18pt) WCAG AAA ✓ Pass

Any Text WCAG AAA × Fail

If you want to check with other color combinations, try the [Color Contrast Checker](#).

XYZ 22.0527, 19.0020, 10.2900

Background



This preview shows how black text looks on a background with the XYZ color 22.0527, 19.0020, 10.2900.



This preview shows how white text looks on a background with the XYZ color 22.0527, 19.0020,

Color Blindness Simulation

Color vision deficiency is a very complex topic, and I could not describe the different causes any better than Wikipedia does, so if you want to learn more, you should check out their [article about color blindness](#).

Dichromacy



Original Color

22.0527, 19.0020, 10.2900

Protanopia

17.7636, 19.1087, 11.7689

Deuteranopia

19.3337, 19.0750, 10.0600



Tritanopia

23.4454, 18.9552, 17.4619

Trichromacy



Original Color

22.0527, 19.0020, 10.2900

Protanomaly

19.0404, 18.8974, 11.2384

Deuteranomaly

20.3020, 19.0648, 10.1993

Tritanomaly

22.7676, 18.8201, 14.4892

Monochromacy



Original Color

22.0527, 19.0020, 10.2900

Achromatopsia

18.1737, 19.1202, 20.8219

Achromatomaly

19.1634, 18.8498, 16.2640

CSS Examples

Text

The CSS property to change the color of the text to XYZ 22.0527, 19.0020, 10.2900 is called "color". The color property can be set on classes, ids or directly on the HTML element.

This example shows how text in the color `rgb(164, 107, 81)` looks like.

```
.text, #text, p{  
    color:rgb(164, 107, 81)  
}
```

If you want to add a text shadow in that color use the text-shadow property, you can generate a text shadow directly with our [CSS Text Shadow Generator](#).

Here you see how black text with a 4 pixel rgb(164, 107, 81) colored shadow looks like.

```
.shadow{ text-shadow: 4px 4px 2px rgb(164, 107, 81) }
```

Border

The CSS property to change the border of an element to XYZ 22.0527, 19.0020, 10.2900 is called "border". The border property can be set on classes, ids or directly on the HTML element.

This example shows the color as border, it can be applied via the CSS property "border" or "border-color".

```
.border, #border, table{ border:4px solid rgb(164, 107, 81) }
```


If only the border color should be changed use the property `border-color`.

```
.border{ border-color:rgb(164, 107, 81) }
```

If you want to add a box shadow in that color use:

Here you see how a box with a 4 pixel `rgb(164, 107, 81)` colored shadow looks like.

```
.boxshadow{ -moz-box-shadow:4px 4px 4px  
4px rgb(164, 107, 81); -webkit-box-  
shadow:4px 4px 4px 4px rgb(164, 107, 81);  
box-shadow:4px 4px 4px 4px rgb(164, 107,  
81) }
```

Background

The CSS property to change the background color of an element to XYZ 22.0527, 19.0020, 10.2900 is called "background". The background property can be set on classes, ids or directly on the HTML element.

```
.background, #background, body{  
background: rgb(164, 107, 81) }
```

If only the background color should be changed can be used:

```
.background{ background-color: rgb(164,  
107, 81) }
```

This example shows the color as background, it is applied via the CSS property "background".

To optimize and compress your CSS code, you can use our [online CSS compressor and optimizer](#) based on csstidy. If you want to create a linear or radial gradient as background or border, check our [CSS Gradient Generator](#).

Hey! You found this booklet interesting? Support Converting Colors with the new Membership Option!

The pro membership hides all ads, plus gives you double the colors in the color bucket, and more awesome pro features!

[Learn more, Memberships starting at \\$2.50/m!](#)

**Follow me
on Twitter!**

@ConvertingColor