

Converting Colors

XYZ(22.2385, 21.0664, 15.3720)

Have a look what the booklet for
XYZ(22.2385, 21.0664, 15.3720)
contains.

XYZ(22.1320, 20.9253, 15.4429)	3
<i>Conversions</i>	4
<i>Details</i>	6
<i>Harmonies</i>	12
<i>Previews</i>	24
<i>Color Blindness Simulation</i>	28
<i>CSS Examples</i>	31

Color

**XYZ(22.1320, 20.9253,
15.4429)**

Conversions

Conversions Part 1

Format	Color
Hex	997766
RGB	153, 119, 102
RGB Percent	60%, 47%, 40%
CMY	0.4000, 0.5333, 0.6000
CMYK	0.00, 0.22, 0.33, 0.40
HSL	20°, 20%, 50%
HSV	20°, 33%, 60%
XYZ	22.1320, 20.9253, 15.4429
YIQ	127.2280, 25.7210, 1.9210

Conversions

Conversions Part 2

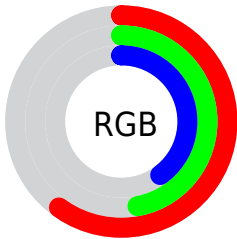
Format	Color
R_{YB}	153, 128, 102
Decimal	10057574
CIE _{Lab}	52.87, 10.76, 14.44
CIE _{LCh}	53, 18.008, 53.291
Yxy	20.9253, 0.3783, 0.3577
Android (android.graphics.Color)	4288247654 (0xFF997766)
YUV	127.2280, -12.4374, 22.6020
Hunter-Lab	45.7442, 6.3098, 12.0051

Details

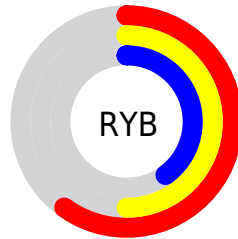
The XYZ color **22.1320, 20.9253, 15.4429** is a dark color, and the websafe version is hex **996666**. A complement of this color would be **20.0332, 22.7323, 33.4690**, and the grayscale version is **20.2869, 21.3434, 23.2430**.

A 20% lighter version of the original color is **46.3251, 44.8356, 36.3495**, and **8.3097, 7.5490, 4.6336** is the 20% darker color. If you saturate the color by 10%, you get **20.2929, 18.3513, 11.4255**, and if you desaturate by 10%, it is **24.2426, 23.8179, 20.2422**.

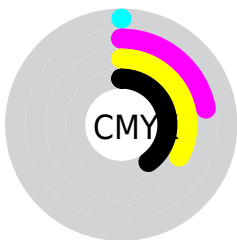
Distribution



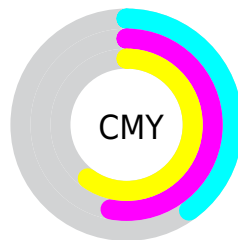
- Red (60%)
- Green (47%)
- Blue (40%)



- Red (60%)
- Yellow (50%)
- Blue (40%)



- Cyan (0%)
- Magenta (22%)
- Yellow (33%)
- Black (40%)



- Cyan (40%)
- Magenta (53%)
- Yellow (60%)

Brightness & Saturation Gradients

These gradients show how the XYZ color 22.1320, 20.9253, 15.4429 changes by changing the brightness by 10 percent. The first figure shows a shift by +10% for each color and the second figure -10%.

Similar to the brightness gradients but the following saturation gradients show a change of the XYZ color 22.1320, 20.9253, 15.4429 by changing the saturation by 10% instead.

■ 22.1320, 20.9253,
15.4429

■ 22.1320, 20.9253,
15.4429

255.8543,
256.8812, 237.7640

■ 14.0711, 13.0694,
8.9807

■ 46.4413, 44.9632,
36.3815

■ 8.2521, 7.4764,
4.6320

■ 63.4204, 61.9140,
51.6951

■ 4.3099, 3.7618,
1.9781

■ 84.1029, 82.6652,
70.7962

■ 1.8789, 1.5412,
0.5417

■ 108.8542,
107.6012, 94.1034

■ 0.5645, 0.3175,
0.0000

138.0396,
137.1064, 122.0353

■ 0.0000, 0.0000,
0.0000

172.0245,

171.5652, 155.0103

211.1743,
211.3620, 193.4470

■ 22.1320, 20.9253,
15.4429

■ 22.1320, 20.9253,
15.4429

■ 20.2929, 18.3513,
11.4255

■ 24.2426, 23.8179,
20.2422

■ 18.7118, 16.0816,
8.1468

■ 26.6340, 27.0367,
25.8609

■ 17.3764, 14.1053,
5.5611

■ 29.3172, 30.5929,
32.3358

■ 16.2729, 12.4094,
3.6172

■ 32.3020, 34.4963,
39.7009

■ 15.3855, 10.9800,
2.2567

■ 35.5978, 38.7560,
47.9883

■ 14.6963, 9.8017,
1.4103

■ 39.2135, 43.3810,
57.2286

■ 14.3212, 9.1408,
1.0096

■ 43.1577, 48.3800,
67.4510

■ 47.4386, 53.7612,
78.6833

■ 52.0642, 59.5327,
90.9525

Harmonies

Analogous

The Analogous color harmony consists of three colors that are next to each other on the color wheel.



23.4023, 20.9253, 18.9261



22.1320, 20.9253, 15.4429



20.3148, 20.9253, 13.9614

Triad

The Triadic color harmony groups three colors that are evenly spaced from another and form a triangle on the color wheel.



22.1320, 20.9253, 15.4429



16.5062, 20.9253, 21.5943



21.3547, 20.9253, 33.6940

Complementary

The Complementary color scheme is a pair of colors which are on the opposite of each other on the color wheel.



22.1320, 20.9253, 15.4429



20.0332, 22.7323, 33.4690

Split Complementary

Split-complementary colors differ from the complementary color scheme. The scheme consists of three colors, the original color and two neighbors of the complement color.



19.4690, 20.9253, 34.7084



22.1320, 20.9253, 15.4429



16.7459, 20.9253, 27.1337

Square

The Square scheme is like the rectangle color scheme, but the four colors are evenly spaced on the color wheel.



22.1320, 20.9253, 15.4429



17.1259, 20.9253, 17.1322



17.8027, 20.9253, 32.1462



22.9341, 20.9253, 29.5596

Rectangle

The Rectangle color scheme consists of four colors that form a rectangle on the color wheel.



22.1320, 20.9253, 15.4429



19.0683, 20.9253, 14.1110



17.8027, 20.9253, 32.1462



20.7327, 20.9253, 34.4355

Sweetspot

The Sweet Spot groups the original color and five complimentary colors.



22.1325, 20.9263, 15.4433



49.1478, 50.3504, 49.7814



22.3324, 18.0529, 25.6002



10.7199, 10.9417, 10.6747



72.9764, 76.7769, 83.6100



11.9732, 12.5967, 13.7178

Same Dimension

The Same Dimension uses a secret algorithm to generate beautiful new colors.



22.1325, 20.9263, 15.4433



37.1350, 33.9847, 22.1625



25.5844, 27.8301, 16.5940



6.3687, 6.5425, 6.5330



11.8643, 7.6110, 0.8438



0.2085, 0.1760, 0.0230

Inverse Universe

The Inverse Universe completely reimagines the original color for something new.



20.0332, 22.7323, 33.4690



32.7757, 37.7129, 59.5238



16.8595, 16.3850, 32.4111



6.2110, 6.6793, 7.8909



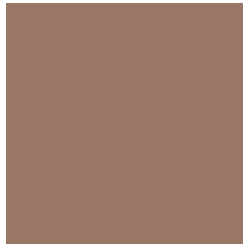
8.7097, 9.8160, 26.3433



0.1633, 0.2129, 0.4049

Previews

White Background



This preview shows how the XYZ color 22.1320, 20.9253, 15.4429 looks on a white background.

Color Contrast Check

Large Text (above 18pt) WCAG AA ✓ Pass

Any Text WCAG AA × Fail

Large Text (above 18pt) WCAG AAA × Fail

Any Text WCAG AAA × Fail

Black Background



This preview shows how the XYZ color 22.1320, 20.9253, 15.4429 looks on a black background.

Color Contrast Check

Large Text (above 18pt) WCAG AA ✓ Pass

Any Text WCAG AA ✓ Pass

Large Text (above 18pt) WCAG AAA ✓ Pass

Any Text WCAG AAA × Fail

If you want to check with other color combinations, try the [Color Contrast Checker](#).

XYZ 22.1320, 20.9253, 15.4429

Background



This preview shows how black text looks on a background with the XYZ color 22.1320, 20.9253, 15.4429.



This preview shows how white text looks on a background with the XYZ color 22.1320, 20.9253,

15.4429.

Color Blindness Simulation

Color vision deficiency is a very complex topic, and I could not describe the different causes any better than Wikipedia does, so if you want to learn more, you should check out their [article about color blindness](#).

Dichromacy



Original Color

22.1320, 20.9253, 15.4429

Protanopia

19.6835, 20.9282, 16.3667

Deuteranopia

21.2683, 20.8371, 15.4714



Tritanopia

23.4646, 20.9400, 22.2071

Trichromacy



Original Color

22.1320, 20.9253, 15.4429

Protanomaly

20.3969, 20.7408, 16.0251

Deuteranomaly

21.5092, 20.7818, 15.4480

Tritanomaly

22.8986, 20.8770, 19.6524

Monochromacy



Original Color

22.1320, 20.9253, 15.4429

Achromatopsia

20.1725, 21.2231, 23.1119

Achromatomaly

20.6310, 20.9575, 20.0974

CSS Examples

Text

The CSS property to change the color of the text to XYZ 22.1320, 20.9253, 15.4429 is called "color". The color property can be set on classes, ids or directly on the HTML element.

This example shows how text in the color `rgb(153, 119, 102)` looks like.

```
.text, #text, p{  
    color:rgb(153, 119, 102)  
}
```

If you want to add a text shadow in that color use the text-shadow property, you can generate a text shadow directly with our [CSS Text Shadow Generator](#).

Here you see how black text with a 4 pixel rgb(153, 119, 102) colored shadow looks like.

```
.shadow{ text-shadow: 4px 4px 2px rgb(153, 119, 102) }
```

Border

The CSS property to change the border of an element to XYZ 22.1320, 20.9253, 15.4429 is called "border". The border property can be set on classes, ids or directly on the HTML element.

This example shows the color as border, it can be applied via the CSS property "border" or "border-color".

```
.border, #border, table{ border:4px solid rgb(153, 119, 102) }
```


If only the border color should be changed use the property `border-color`.

```
.border{ border-color:rgb(153, 119, 102) }
```

If you want to add a box shadow in that color use:

Here you see how a box with a 4 pixel `rgb(153, 119, 102)` colored shadow looks like.

```
.boxshadow{ -moz-box-shadow:4px 4px 4px  
4px rgb(153, 119, 102); -webkit-box-  
shadow:4px 4px 4px 4px rgb(153, 119, 102);  
box-shadow:4px 4px 4px 4px rgb(153, 119,  
102) }
```

Background

The CSS property to change the background color of an element to XYZ 22.1320, 20.9253, 15.4429 is called "background". The background property can be set on classes, ids or directly on the HTML element.

```
.background, #background, body{  
background: rgb(153, 119, 102) }
```

If only the background color should be changed can be used:

```
.background{ background-color: rgb(153,  
119, 102) }
```

This example shows the color as background, it is applied via the CSS property "background".

To optimize and compress your CSS code, you can use our [online CSS compressor and optimizer](#) based on csstidy. If you want to create a linear or radial gradient as background or border, check our [CSS Gradient Generator](#).

Hey! You found this booklet interesting? Support Converting Colors with the new Membership Option!

The pro membership hides all ads, plus gives you double the colors in the color bucket, and more awesome pro features!

[Learn more, Memberships starting at \\$2.50/m!](#)

**Follow me
on Twitter!**

@ConvertingColor