

Converting Colors

XYZ(22.3179, 21.6083, 11.7567)

Have a look what the booklet for
XYZ(22.3179, 21.6083, 11.7567)
contains.

XYZ(22.3495, 21.6589, 11.8067)	3
<i>Conversions</i>	4
<i>Details</i>	6
<i>Harmonies</i>	12
<i>Previews</i>	24
<i>Color Blindness Simulation</i>	28
<i>CSS Examples</i>	31

Color

**XYZ(22.3495, 21.6589,
11.8067)**

Conversions

Conversions Part 1

Format	Color
Hex	9C7A56
RGB	156, 122, 86
RGB Percent	61%, 48%, 34%
CMY	0.3882, 0.5216, 0.6627
CMYK	0.00, 0.22, 0.45, 0.39
HSL	31°, 29%, 47%
HSV	31°, 45%, 61%
XYZ	22.3495, 21.6589, 11.8067
YIQ	128.0620, 31.8200, -3.9880

Conversions

Conversions Part 2

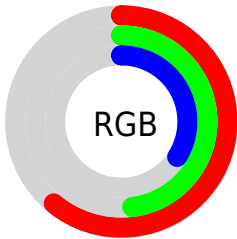
Format	Color
RYB	152, 156, 86
Decimal	10254934
CIELab	53.66, 8.34, 24.74
CIELCh	54, 26.105, 71.369
Yxy	21.6589, 0.4004, 0.3880
Android (android.graphics.Color)	4288445014 (0xFF9C7A56)
YUV	128.0620, -20.7366, 24.5016
Hunter-Lab	46.5391, 4.2777, 17.5359

Details

The XYZ color **22.3495, 21.6589, 11.8067** is a dark color, and the websafe version is hex **996633**. A complement of this color would be **16.5546, 17.8108, 34.0176**, and the grayscale version is **20.6017, 21.6746, 23.6037**.

A 20% lighter version of the original color is **46.7314, 46.0467, 29.7175**, and **8.3591, 7.8019, 3.0728** is the 20% darker color. If you saturate the color by 10%, you get **20.8941, 19.6466, 8.5519**, and if you desaturate by 10%, it is **24.0157, 23.8732, 15.8091**.

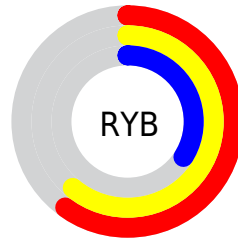
Distribution



Red (61%)

Green (48%)

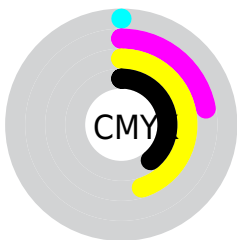
Blue (34%)



Red (60%)

Yellow (61%)

Blue (34%)

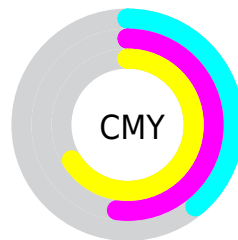


Cyan (0%)

Magenta (22%)

Yellow (45%)

Black (39%)



Cyan (39%)

Magenta (52%)

Yellow (66%)

Brightness & Saturation Gradients

These gradients show how the XYZ color 22.3495, 21.6589, 11.8067 changes by changing the brightness by 10 percent. The first figure shows a shift by +10% for each color and the second figure -10%.

Similar to the brightness gradients but the following saturation gradients show a change of the XYZ color 22.3495, 21.6589, 11.8067 by changing the saturation by 10% instead.

■ 22.3495, 21.6589,
11.8067

■ 22.3495, 21.6589,
11.8067

256.9642,
260.7598, 214.0537

■ 14.2320, 13.6065,
6.4913

■ 46.7975, 46.1816,
29.8017

■ 8.3650, 7.8475,
3.0725

■ 63.8587, 63.4206,
43.3183

■ 4.3831, 3.9975,
1.1317

■ 84.6319, 84.4907,
60.4057

■ 1.9211, 1.6722,
0.0000

■ 109.4824,
109.7761, 81.4824

■ 0.5890, 0.4055,
0.0000

■ 138.7755,
139.6614, 106.9671

■ 0.0000, 0.0000,
0.0000

172.8766,

174.5308, 137.2781

212.1511,
214.7688, 172.8341

■ 22.3495, 21.6589,
11.8067

■ 22.3495, 21.6589,
11.8067

■ 20.8941, 19.6466,
8.5519

■ 24.0157, 23.8732,
15.8091

■ 19.6373, 17.8264,
5.9953

■ 25.9009, 26.2929,
20.6015

■ 18.5678, 16.1917,
4.0837

■ 28.0147, 28.9251,
26.2248

■ 17.6721, 14.7345,
2.7552

■ 30.3658, 31.7757,
32.7165

■ 16.9340, 13.4452,
1.9324

■ 32.9621, 34.8501,
40.1118

■ 16.5963, 12.8401,
1.6037

■ 35.8112, 38.1538,
48.4440

■ 38.9206, 41.6917,
57.7448

■ 42.2970, 45.4689,
68.0442

■ 45.9474, 49.4902,
79.3709

Harmonies

Analogous

The Analogous color harmony consists of three colors that are next to each other on the color wheel.



24.8841, 21.6589, 14.8100



22.3495, 21.6589, 11.8067



19.5457, 21.6589, 11.4917

Triad

The Triadic color harmony groups three colors that are evenly spaced from another and form a triangle on the color wheel.



22.3495, 21.6589, 11.8067



15.7582, 21.6589, 26.7459



24.3425, 21.6589, 37.1074

Complementary

The Complementary color scheme is a pair of colors which are on the opposite of each other on the color wheel.



22.3495, 21.6589, 11.8067



16.5546, 17.8108, 34.0176

Split Complementary

Split-complementary colors differ from the complementary color scheme. The scheme consists of three colors, the original color and two neighbors of the complement color.



21.6628, 21.6589, 42.0985



22.3495, 21.6589, 11.8067



16.8139, 21.6589, 35.2754

Square

The Square scheme is like the rectangle color scheme, but the four colors are evenly spaced on the color wheel.



22.3495, 21.6589, 11.8067



15.9059, 21.6589, 19.0036



18.9181, 21.6589, 41.3611



26.1046, 21.6589, 28.8443

Rectangle

The Rectangle color scheme consists of four colors that form a rectangle on the color wheel.



22.3495, 21.6589, 11.8067



17.9158, 21.6589, 12.7393



18.9181, 21.6589, 41.3611



23.5095, 21.6589, 39.2994

Sweetspot

The Sweet Spot groups the original color and five complimentary colors.



22.3500, 21.6599, 11.8071



51.5427, 53.3450, 49.4263



20.4893, 15.1041, 19.9247



11.1556, 11.5101, 10.3704



74.8435, 78.7412, 85.7492



12.6291, 13.2868, 14.4694

Same Dimension

The Same Dimension uses a secret algorithm to generate beautiful new colors.



22.3500, 21.6599, 11.8071



37.9014, 35.6154, 15.4289



27.2783, 31.5165, 13.4499



6.9010, 7.1820, 7.0082



13.7052, 10.6461, 1.3325



0.2873, 0.2749, 0.0379

Inverse Universe

The Inverse Universe completely reimagines the original color for something new.



16.5546, 17.8108, 34.0176



25.9854, 27.7041, 61.1046



13.1664, 11.0345, 32.8882



6.5373, 6.9403, 8.4017



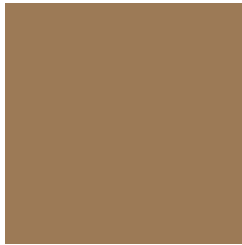
7.0926, 6.2767, 26.7449



0.1690, 0.1967, 0.4923

Previews

White Background



This preview shows how the XYZ color 22.3495, 21.6589, 11.8067 looks on a white background.

Color Contrast Check

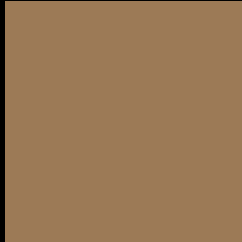
Large Text (above 18pt) WCAG AA ✓ Pass

Any Text WCAG AA × Fail

Large Text (above 18pt) WCAG AAA × Fail

Any Text WCAG AAA × Fail

Black Background



This preview shows how the XYZ color 22.3495, 21.6589, 11.8067 looks on a black background.

Color Contrast Check

Large Text (above 18pt) WCAG AA ✓ Pass

Any Text WCAG AA ✓ Pass

Large Text (above 18pt) WCAG AAA ✓ Pass

Any Text WCAG AAA × Fail

If you want to check with other color combinations, try the [Color Contrast Checker](#).

XYZ 22.3495, 21.6589, 11.8067

Background



This preview shows how black text looks on a background with the XYZ color 22.3495, 21.6589, 11.8067.



This preview shows how white text looks on a background with the XYZ color 22.3495, 21.6589,

Color Blindness Simulation

Color vision deficiency is a very complex topic, and I could not describe the different causes any better than Wikipedia does, so if you want to learn more, you should check out their [article about color blindness](#).

Dichromacy



Original Color

22.3495, 21.6589, 11.8067

Protanopia

20.1698, 21.6486, 12.5667

Deuteranopia

22.0891, 21.7078, 11.8299



Tritanopia

24.6244, 21.7025, 22.6298

Trichromacy



Original Color

22.3495, 21.6589, 11.8067

Protanomaly

20.8994, 21.6460, 12.3091

Deuteranomaly

22.2802, 21.8064, 11.8389

Tritanomaly

23.7641, 21.7123, 17.9773

Monochromacy



Original Color

22.3495, 21.6589, 11.8067

Achromatopsia

20.5175, 21.5861, 23.5072

Achromatomaly

20.9227, 21.5172, 18.6733

CSS Examples

Text

The CSS property to change the color of the text to XYZ 22.3495, 21.6589, 11.8067 is called "color". The color property can be set on classes, ids or directly on the HTML element.

This example shows how text in the color `rgb(156, 122, 86)` looks like.

```
.text, #text, p{  
    color:rgb(156, 122, 86)  
}
```

If you want to add a text shadow in that color use the text-shadow property, you can generate a text shadow directly with our [CSS Text Shadow Generator](#).

Here you see how black text with a 4 pixel rgb(156, 122, 86) colored shadow looks like.

```
.shadow{ text-shadow: 4px 4px 2px rgb(156, 122, 86) }
```

Border

The CSS property to change the border of an element to XYZ 22.3495, 21.6589, 11.8067 is called "border". The border property can be set on classes, ids or directly on the HTML element.

This example shows the color as border, it can be applied via the CSS property "border" or "border-color".

```
.border, #border, table{ border:4px solid rgb(156, 122, 86) }
```


If only the border color should be changed use the property `border-color`.

```
.border{ border-color:rgb(156, 122, 86) }
```

If you want to add a box shadow in that color use:

Here you see how a box with a 4 pixel `rgb(156, 122, 86)` colored shadow looks like.

```
.boxshadow{ -moz-box-shadow:4px 4px 4px  
4px rgb(156, 122, 86); -webkit-box-  
shadow:4px 4px 4px 4px rgb(156, 122, 86);  
box-shadow:4px 4px 4px 4px rgb(156, 122,  
86) }
```

Background

The CSS property to change the background color of an element to XYZ 22.3495, 21.6589, 11.8067 is called "background". The background property can be set on classes, ids or directly on the HTML element.

```
.background, #background, body{  
background: rgb(156, 122, 86) }
```

If only the background color should be changed can be used:

```
.background{ background-color: rgb(156,  
122, 86) }
```

This example shows the color as background, it is applied via the CSS property "background".

To optimize and compress your CSS code, you can use our [online CSS compressor and optimizer](#) based on csstidy. If you want to create a linear or radial gradient as background or border, check our [CSS Gradient Generator](#).

Hey! You found this booklet interesting? Support Converting Colors with the new Membership Option!

The pro membership hides all ads, plus gives you double the colors in the color bucket, and more awesome pro features!

[Learn more, Memberships starting at \\$2.50/m!](#)

**Follow me
on Twitter!**

@ConvertingColor