

Converting Colors

XYZ(22.3384, 21.8187, 16.2487)

Have a look what the booklet for
XYZ(22.3384, 21.8187, 16.2487)
contains.

XYZ(22.3441, 21.7447, 16.1162)	3
<i>Conversions</i>	4
<i>Details</i>	6
<i>Harmonies</i>	12
<i>Previews</i>	24
<i>Color Blindness Simulation</i>	28
<i>CSS Examples</i>	31

Color

**XYZ(22.3441, 21.7447,
16.1162)**

Conversions

Conversions Part 1

Format	Color
Hex	977B68
RGB	151, 123, 104
RGB Percent	59%, 48%, 41%
CMY	0.4078, 0.5176, 0.5922
CMYK	0.00, 0.19, 0.31, 0.41
HSL	24°, 18%, 50%
HSV	24°, 31%, 59%
XYZ	22.3441, 21.7447, 16.1162
YIQ	129.2060, 22.7870, 0.0270

Conversions

Conversions Part 2

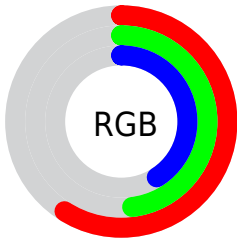
Format	Color
RYB	151, 136, 104
Decimal	9927528
CIELab	53.76, 7.92, 14.47
CIElCh	54, 16.497, 61.314
Yxy	21.7447, 0.3711, 0.3612
Android (android.graphics.Color)	4288117608 (0xFF977B68)
YUV	129.2060, -12.4266, 19.1133
Hunter-Lab	46.6312, 3.9265, 12.1506

Details

The XYZ color **22.3441, 21.7447, 16.1162** is a dark color, and the websafe version is hex **996666**. A complement of this color would be **19.5458, 21.6792, 32.4324**, and the grayscale version is **20.9755, 22.0679, 24.0319**.

A 20% lighter version of the original color is **46.7000, 46.1483, 37.4565**, and **8.3329, 7.8456, 4.9461** is the 20% darker color. If you saturate the color by 10%, you get **20.5799, 19.3357, 12.0769**, and if you desaturate by 10%, it is **24.3494, 24.4158, 20.9140**.

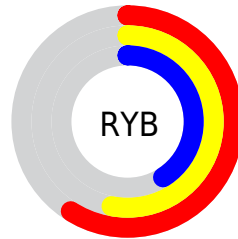
Distribution



Red (59%)

Green (48%)

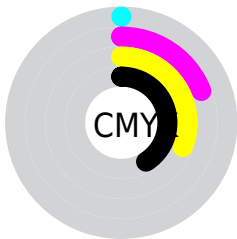
Blue (41%)



Red (59%)

Yellow (53%)

Blue (41%)

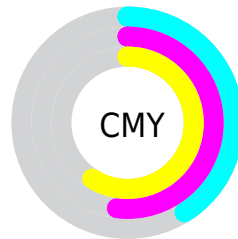


Cyan (0%)

Magenta (19%)

Yellow (31%)

Black (41%)



Cyan (41%)

Magenta (52%)

Yellow (59%)

Brightness & Saturation Gradients

These gradients show how the XYZ color 22.3441, 21.7447, 16.1162 changes by changing the brightness by 10 percent. The first figure shows a shift by +10% for each color and the second figure -10%.

Similar to the brightness gradients but the following saturation gradients show a change of the XYZ color 22.3441, 21.7447, 16.1162 by changing the saturation by 10% instead.

■ 22.3441, 21.7447,
16.1162

■ 22.3441, 21.7447,
16.1162

256.9367,
261.2101, 241.8955

■ 14.2280, 13.6694,
9.4512

■ 46.7887, 46.3237,
37.5694

■ 8.3622, 7.8911,
4.9358

■ 63.8479, 63.5962,
53.1947

■ 4.3813, 4.0254,
2.1516

■ 84.6188, 84.7032,
72.6438

■ 1.9200, 1.6878,
0.6462

■ 109.4668,
110.0292, 96.3352

■ 0.5884, 0.4157,
0.0000

138.7572,
139.9584, 124.6876

■ 0.0000, 0.0000,
0.0000

172.8555,

174.8754, 158.1194

212.1268,
215.1645, 197.0492

■ 22.3441, 21.7447,
16.1162

■ 22.3441, 21.7447,
16.1162

■ 20.5799, 19.3357,
12.0769

■ 24.3494, 24.4158,
20.9140

■ 19.0449, 17.1772,
8.7552

■ 26.6035, 27.3539,
26.5055

■ 17.7289, 15.2614,
6.1085

■ 29.1158, 30.5677,
32.9255

■ 16.6199, 13.5787,
4.0887

■ 31.8947, 34.0644,
40.2062

■ 15.7047, 12.1187,
2.6417

■ 34.9483, 37.8511,
48.3780

■ 14.9681, 10.8701,
1.7037

■ 38.2843, 41.9345,
57.4699

■ 14.4341, 9.9225,
1.1545

■ 41.9099, 46.3212,
67.5096

■ 45.8323, 51.0174,
78.5236

■ 50.0582, 56.0293,
90.5373

Harmonies

Analogous

The Analogous color harmony consists of three colors that are next to each other on the color wheel.



23.7126, 21.7447, 18.9649



22.3441, 21.7447, 16.1162



20.5898, 21.7447, 15.2103

Triad

The Triadic color harmony groups three colors that are evenly spaced from another and form a triangle on the color wheel.



22.3441, 21.7447, 16.1162



17.4497, 21.7447, 23.9004



22.4867, 21.7447, 33.0139

Complementary

The Complementary color scheme is a pair of colors which are on the opposite of each other on the color wheel.



22.3441, 21.7447, 16.1162



19.5458, 21.6792, 32.4324

Split Complementary

Split-complementary colors differ from the complementary color scheme. The scheme consists of three colors, the original color and two neighbors of the complement color.



20.7458, 21.7447, 34.8138



22.3441, 21.7447, 16.1162



17.8953, 21.7447, 29.1097

Square

The Square scheme is like the rectangle color scheme, but the four colors are evenly spaced on the color wheel.



22.3441, 21.7447, 16.1162



17.8245, 21.7447, 19.3006



19.0773, 21.7447, 33.2935



23.7981, 21.7447, 28.6679

Rectangle

The Rectangle color scheme consists of four colors that form a rectangle on the color wheel.



22.3441, 21.7447, 16.1162



19.4556, 21.7447, 15.7100



19.0773, 21.7447, 33.2935



21.9291, 21.7447, 33.9625

Sweetspot

The Sweet Spot groups the original color and five complimentary colors.



22.3447, 21.7457, 16.1166



48.4821, 50.0680, 49.5863



21.8915, 18.1516, 24.2515



10.8861, 11.2082, 10.9334



72.9764, 76.7769, 83.6100



11.9732, 12.5967, 13.7178

Same Dimension

The Same Dimension uses a secret algorithm to generate beautiful new colors.



22.3447, 21.7457, 16.1166



37.8788, 36.0374, 23.9291



25.5864, 28.2292, 17.1972



6.4036, 6.6122, 6.5446



12.3061, 8.4946, 0.9910



0.2183, 0.1956, 0.0262

Inverse Universe

The Inverse Universe completely reimagines the original color for something new.



19.5458, 21.6792, 32.4324



32.0869, 35.8928, 57.6705



16.7317, 16.0511, 31.4944



6.1749, 6.6072, 7.8788



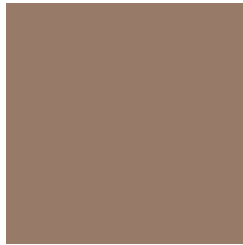
7.8870, 8.1707, 26.0691



0.1535, 0.1933, 0.4016

Previews

White Background



This preview shows how the XYZ color 22.3441, 21.7447, 16.1162 looks on a white background.

Color Contrast Check

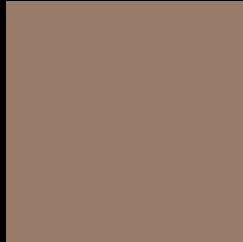
Large Text (above 18pt) WCAG AA ✓ Pass

Any Text WCAG AA × Fail

Large Text (above 18pt) WCAG AAA × Fail

Any Text WCAG AAA × Fail

Black Background



This preview shows how the XYZ color 22.3441, 21.7447, 16.1162 looks on a black background.

Color Contrast Check

Large Text (above 18pt) WCAG AA ✓ Pass

Any Text WCAG AA ✓ Pass

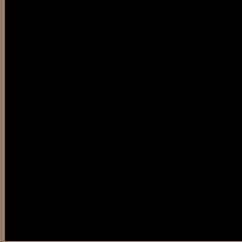
Large Text (above 18pt) WCAG AAA ✓ Pass

Any Text WCAG AAA × Fail

If you want to check with other color combinations, try the [Color Contrast Checker](#).

XYZ 22.3441, 21.7447, 16.1162

Background



This preview shows how black text looks on a background with the XYZ color 22.3441, 21.7447, 16.1162.



This preview shows how white text looks on a background with the XYZ color 22.3441, 21.7447,

Color Blindness Simulation

Color vision deficiency is a very complex topic, and I could not describe the different causes any better than Wikipedia does, so if you want to learn more, you should check out their [article about color blindness](#).

Dichromacy



Original Color

22.3441, 21.7447, 16.1162

Protanopia

20.5264, 21.7341, 17.0232

Deuteranopia

22.2840, 21.8988, 16.1491



Tritanopia

24.0053, 21.8879, 23.7285

Trichromacy



Original Color

22.3441, 21.7447, 16.1162

Protanomaly

21.0469, 21.6250, 16.7004

Deuteranomaly

22.2840, 21.8988, 16.1491

Tritanomaly

23.3644, 21.8031, 20.7463

Monochromacy



Original Color

22.3441, 21.7447, 16.1162

Achromatopsia

20.8660, 21.9526, 23.9064

Achromatomaly

21.2961, 21.8532, 20.8650

CSS Examples

Text

The CSS property to change the color of the text to XYZ 22.3441, 21.7447, 16.1162 is called "color". The color property can be set on classes, ids or directly on the HTML element.

This example shows how text in the color `rgb(151, 123, 104)` looks like.

```
.text, #text, p{  
    color:rgb(151, 123, 104)  
}
```

If you want to add a text shadow in that color use the text-shadow property, you can generate a text shadow directly with our [CSS Text Shadow Generator](#).

Here you see how black text with a 4 pixel rgb(151, 123, 104) colored shadow looks like.

```
.shadow{ text-shadow: 4px 4px 2px rgb(151, 123, 104) }
```

Border

The CSS property to change the border of an element to XYZ 22.3441, 21.7447, 16.1162 is called "border". The border property can be set on classes, ids or directly on the HTML element.

This example shows the color as border, it can be applied via the CSS property "border" or "border-color".

```
.border, #border, table{ border:4px solid rgb(151, 123, 104) }
```


If only the border color should be changed use the property `border-color`.

```
.border{ border-color:rgb(151, 123, 104) }
```

If you want to add a box shadow in that color use:

Here you see how a box with a 4 pixel `rgb(151, 123, 104)` colored shadow looks like.

```
.boxshadow{ -moz-box-shadow:4px 4px 4px  
4px rgb(151, 123, 104); -webkit-box-  
shadow:4px 4px 4px 4px rgb(151, 123, 104);  
box-shadow:4px 4px 4px 4px rgb(151, 123,  
104) }
```

Background

The CSS property to change the background color of an element to XYZ 22.3441, 21.7447, 16.1162 is called "background". The background property can be set on classes, ids or directly on the HTML element.

```
.background, #background, body{  
background: rgb(151, 123, 104) }
```

If only the background color should be changed can be used:

```
.background{ background-color: rgb(151,  
123, 104) }
```

This example shows the color as background, it is applied via the CSS property "background".

To optimize and compress your CSS code, you can use our [online CSS compressor and optimizer](#) based on csstidy. If you want to create a linear or radial gradient as background or border, check our [CSS Gradient Generator](#).

Hey! You found this booklet interesting? Support Converting Colors with the new Membership Option!

The pro membership hides all ads, plus gives you double the colors in the color bucket, and more awesome pro features!

[Learn more, Memberships starting at \\$2.50/m!](#)

**Follow me
on Twitter!**

@ConvertingColor