

Converting Colors

XYZ(22.5901, 15.3966, 12.3339)

Have a look what the booklet for
XYZ(22.5901, 15.3966, 12.3339)
contains.

XYZ(22.5788, 15.3460, 12.3617)	3
<i>Conversions</i>	4
<i>Details</i>	6
<i>Harmonies</i>	12
<i>Previews</i>	24
<i>Color Blindness Simulation</i>	28
<i>CSS Examples</i>	31

Color

**XYZ(22.5788, 15.3460,
12.3617)**

Conversions

Conversions Part 1

Format	Color
Hex	B04D5E
RGB	176, 77, 94
RGB Percent	69%, 30%, 37%
CMY	0.3098, 0.6980, 0.6314
CMYK	0.00, 0.56, 0.47, 0.31
HSL	350°, 39%, 50%
HSV	350°, 56%, 69%
XYZ	22.5788, 15.3460, 12.3617
YIQ	108.5390, 53.5470, 26.2750

Conversions

Conversions Part 2

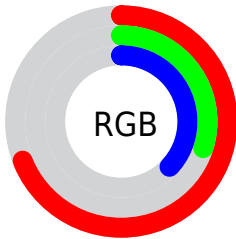
Format	Color
RYB	176, 77, 94
Decimal	11554142
CIELab	46.10, 41.97, 10.23
CIElCh	46, 43.202, 13.702
Yxy	15.3460, 0.4490, 0.3052
Android (android.graphics.Color)	4289744222 (0xFFB04D5E)
YUV	108.5390, -7.1677, 59.1633
Hunter-Lab	39.1740, 34.3280, 8.7123

Details

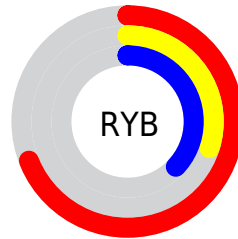
The XYZ color **22.5788, 15.3460, 12.3617** is a dark color, and the websafe version is hex **CC6666**. A complement of this color would be **24.8448, 35.1321, 38.2750**, and the grayscale version is **14.4149, 15.1656, 16.5154**.

A 20% lighter version of the original color is **47.1452, 35.3763, 30.7290**, and **8.4679, 4.7886, 3.2743** is the 20% darker color. If you saturate the color by 10%, you get **20.9161, 12.9706, 8.8791**, and if you desaturate by 10%, it is **24.6990, 18.4387, 16.6067**.

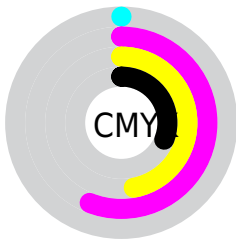
Distribution



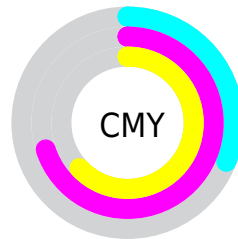
- Red (69%)
- Green (30%)
- Blue (37%)



- Red (69%)
- Yellow (30%)
- Blue (37%)



- Cyan (0%)
- Magenta (56%)
- Yellow (47%)
- Black (31%)



- Cyan (31%)
- Magenta (70%)
- Yellow (63%)

Brightness & Saturation Gradients

These gradients show how the XYZ color 22.5788, 15.3460, 12.3617 changes by changing the brightness by 10 percent. The first figure shows a shift by +10% for each color and the second figure -10%.

Similar to the brightness gradients but the following saturation gradients show a change of the XYZ color 22.5788, 15.3460, 12.3617 by changing the saturation by 10% instead.

■ 22.5788, 15.3460,
12.3617

■ 22.5788, 15.3460,
12.3617

258.1301,
225.4510, 217.8476

■ 14.4018, 9.0626,
6.8650

■ 47.1726, 35.4590,
30.8264

■ 8.4842, 4.7820,
3.3006

■ 64.3200, 50.0574,
44.6314

■ 4.4607, 2.1199,
1.2501

■ 85.1883, 68.1963,
62.0430

■ 1.9659, 0.6758,
0.0204

■ 110.1428, 90.2600,
83.4796

■ 0.6147, 0.0000,
0.0000

■ 139.5489,
116.6329, 109.3598

■ 0.0000, 0.0000,
0.0000

173.7719,

147.6994, 140.1022

213.1772,
183.8440, 176.1253

■ 22.5788, 15.3460,
12.3617

■ 22.5788, 15.3460,
12.3617

■ 20.9161, 12.9706,
8.8791

■ 24.6990, 18.4387,
16.6067

■ 19.6752, 11.2521,
6.1122

■ 27.3064, 22.2979,
21.6554

■ 18.8169, 10.1245,
4.0101

■ 30.4297, 26.9711,
27.5468

■ 18.2899, 9.4990,
2.5136

■ 34.0947, 32.5012,
34.3174

■ 18.1416, 9.3250,
2.0865

■ 38.3258, 38.9285,
42.0014

■ 43.1458, 46.2902,
50.6311

■ 48.5760, 54.6218,
60.2373

■ 54.6369, 63.9567,
70.8494

■ 61.3480, 74.3269,
82.4956

Harmonies

Analogous

The Analogous color harmony consists of three colors that are next to each other on the color wheel.



22.4682, 15.3460, 23.0517



22.5788, 15.3460, 12.3617



20.3101, 15.3460, 6.2690

Triad

The Triadic color harmony groups three colors that are evenly spaced from another and form a triangle on the color wheel.



22.5788, 15.3460, 12.3617



10.2306, 15.3460, 5.9380



12.6925, 15.3460, 44.6090

Complementary

The Complementary color scheme is a pair of colors which are on the opposite of each other on the color wheel.



22.5788, 15.3460, 12.3617



24.8448, 35.1321, 38.2750

Split Complementary

Split-complementary colors differ from the complementary color scheme. The scheme consists of three colors, the original color and two neighbors of the complement color.



10.0531, 15.3460, 34.9399



22.5788, 15.3460, 12.3617



8.8035, 15.3460, 11.6519

Square

The Square scheme is like the rectangle color scheme, but the four colors are evenly spaced on the color wheel.



22.5788, 15.3460, 12.3617



12.9763, 15.3460, 3.7558



8.7445, 15.3460, 21.9724



16.3235, 15.3460, 45.0669

Rectangle

The Rectangle color scheme consists of four colors that form a rectangle on the color wheel.



22.5788, 15.3460, 12.3617



17.9436, 15.3460, 4.3452



8.7445, 15.3460, 21.9724



11.6756, 15.3460, 42.1898

Sweetspot

The Sweet Spot groups the original color and five complimentary colors.



22.5792, 15.3468, 12.3620



61.0906, 57.8174, 60.8733



24.5620, 15.6971, 42.8097



12.9466, 12.0873, 12.6544



84.5950, 89.0005, 96.9216



16.2198, 17.0645, 18.5832

Same Dimension

The Same Dimension uses a secret algorithm to generate beautiful new colors.



22.5792, 15.3468, 12.3620



37.4440, 22.8348, 15.0390



24.6442, 20.5659, 9.6929



8.5539, 8.5283, 9.1495



13.3263, 6.8481, 1.6124



0.4373, 0.2227, 0.1456

Inverse Universe

The Inverse Universe completely reimagines the original color for something new.



22.5792, 15.3468, 12.3620



37.4440, 22.8348, 15.0390



20.9698, 24.8572, 44.7671



8.5539, 8.5283, 9.1495



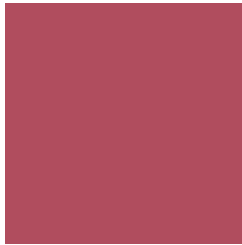
13.3263, 6.8481, 1.6124



0.4373, 0.2227, 0.1456

Previews

White Background



This preview shows how the XYZ color 22.5788, 15.3460, 12.3617 looks on a white background.

Color Contrast Check

Large Text (above 18pt) WCAG AA ✓ Pass

Any Text WCAG AA ✓ Pass

Large Text (above 18pt) WCAG AAA ✓ Pass

Any Text WCAG AAA × Fail

Black Background



This preview shows how the XYZ color 22.5788, 15.3460, 12.3617 looks on a black background.

Color Contrast Check

Large Text (above 18pt) WCAG AA ✓ Pass

Any Text WCAG AA × Fail

Large Text (above 18pt) WCAG AAA × Fail

Any Text WCAG AAA × Fail

If you want to check with other color combinations, try the [Color Contrast Checker](#).

XYZ 22.5788, 15.3460, 12.3617

Background



This preview shows how black text looks on a background with the XYZ color 22.5788, 15.3460, 12.3617.



This preview shows how white text looks on a background with the XYZ color 22.5788, 15.3460,

Color Blindness Simulation

Color vision deficiency is a very complex topic, and I could not describe the different causes any better than Wikipedia does, so if you want to learn more, you should check out their [article about color blindness](#).

Dichromacy



Original Color

22.5788, 15.3460, 12.3617

Protanopia

14.8934, 15.4645, 17.2389

Deuteranopia

15.7096, 15.5414, 11.6230



Tritanopia

22.0754, 15.3460, 10.1861

Trichromacy



Original Color

22.5788, 15.3460, 12.3617

Protanomaly

16.8162, 14.7202, 15.3196

Deuteranomaly

17.6576, 14.9595, 11.8543

Tritanomaly

22.1650, 15.2673, 11.0112

Monochromacy



Original Color

22.5788, 15.3460, 12.3617

Achromatopsia

14.5356, 15.2926, 16.6537

Achromatomaly

16.4463, 14.5354, 15.0355

CSS Examples

Text

The CSS property to change the color of the text to XYZ 22.5788, 15.3460, 12.3617 is called "color". The color property can be set on classes, ids or directly on the HTML element.

This example shows how text in the color `rgb(176, 77, 94)` looks like.

```
.text, #text, p{  
  color:rgb(176, 77, 94)  
}
```

If you want to add a text shadow in that color use the text-shadow property, you can generate a text shadow directly with our [CSS Text Shadow Generator](#).

Here you see how black text with a 4 pixel rgb(176, 77, 94) colored shadow looks like.

```
.shadow{ text-shadow: 4px 4px 2px rgb(176, 77, 94) }
```

Border

The CSS property to change the border of an element to XYZ 22.5788, 15.3460, 12.3617 is called "border". The border property can be set on classes, ids or directly on the HTML element.

This example shows the color as border, it can be applied via the CSS property "border" or "border-color".

```
.border, #border, table{ border:4px solid rgb(176, 77, 94) }
```


If only the border color should be changed use the property border-color.

```
.border{ border-color:rgb(176, 77, 94) }
```

If you want to add a box shadow in that color use:

Here you see how a box with a 4 pixel rgb(176, 77, 94) colored shadow looks like.

```
.boxshadow{ -moz-box-shadow:4px 4px 4px  
4px rgb(176, 77, 94); -webkit-box-  
shadow:4px 4px 4px 4px rgb(176, 77, 94);  
box-shadow:4px 4px 4px 4px rgb(176, 77,  
94) }
```

Background

The CSS property to change the background color of an element to XYZ 22.5788, 15.3460, 12.3617 is called "background". The background property can be set on classes, ids or directly on the HTML element.

```
.background, #background, body{  
background: rgb(176, 77, 94) }
```

If only the background color should be changed can be used:

```
.background{ background-color: rgb(176, 77,  
94) }
```

This example shows the color as background, it is applied via the CSS property "background".

To optimize and compress your CSS code, you can use our [online CSS compressor and optimizer](#) based on csstidy. If you want to create a linear or radial gradient as background or border, check our [CSS Gradient Generator](#).

Hey! You found this booklet interesting? Support Converting Colors with the new Membership Option!

The pro membership hides all ads, plus gives you double the colors in the color bucket, and more awesome pro features!

[Learn more, Memberships starting at \\$2.50/m!](#)

**Follow me
on Twitter!**

@ConvertingColor