

Converting Colors

XYZ(22.7774, 21.7489, 14.3072)

Have a look what the booklet for
XYZ(22.7774, 21.7489, 14.3072)
contains.

XYZ(22.8275, 21.8501, 14.3236)	3
<i>Conversions</i>	4
<i>Details</i>	6
<i>Harmonies</i>	12
<i>Previews</i>	24
<i>Color Blindness Simulation</i>	28
<i>CSS Examples</i>	31

Color

**XYZ(22.8275, 21.8501,
14.3236)**

Conversions

Conversions Part 1

Format	Color
Hex	9C7A61
RGB	156, 122, 97
RGB Percent	61%, 48%, 38%
CMY	0.3882, 0.5216, 0.6196
CMYK	0.00, 0.22, 0.38, 0.39
HSL	25°, 23%, 50%
HSV	25°, 38%, 61%
XYZ	22.8275, 21.8501, 14.3236
YIQ	129.3160, 28.2890, -0.5670

Conversions

Conversions Part 2

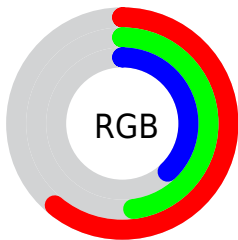
Format	Color
R_{YB}	156, 140, 97
Decimal	10254945
CIE _{Lab}	53.87, 9.64, 18.74
CIE _{LCh}	54, 21.079, 62.775
Yxy	21.8501, 0.3869, 0.3703
Android (android.graphics.Color)	4288445025 (0xFF9C7A61)
YUV	129.3160, -15.9318, 23.4019
Hunter-Lab	46.7441, 5.3684, 14.5529

Details

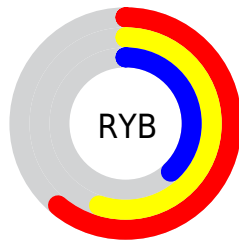
The XYZ color **22.8275, 21.8501, 14.3236** is a dark color, and the websafe version is hex **996666**. A complement of this color would be **19.0464, 21.1734, 34.5354**, and the grayscale version is **21.0248, 22.1197, 24.0884**.

A 20% lighter version of the original color is **47.6327, 46.4073, 34.4640**, and **8.5518, 7.8789, 4.0877** is the 20% darker color. If you saturate the color by 10%, you get **21.1174, 19.4817, 10.5110**, and if you desaturate by 10%, it is **24.7839, 24.4820, 18.9245**.

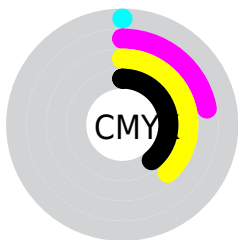
Distribution



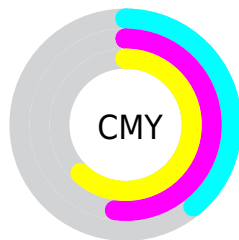
- Red (61%)
- Green (48%)
- Blue (38%)



- Red (61%)
- Yellow (55%)
- Blue (38%)



- Cyan (0%)
- Magenta (22%)
- Yellow (38%)
- Black (39%)



- Cyan (39%)
- Magenta (52%)
- Yellow (62%)

Brightness & Saturation Gradients

These gradients show how the XYZ color 22.8275, 21.8501, 14.3236 changes by changing the brightness by 10 percent. The first figure shows a shift by +10% for each color and the second figure -10%.

Similar to the brightness gradients but the following saturation gradients show a change of the XYZ color 22.8275, 21.8501, 14.3236 by changing the saturation by 10% instead.

■ 22.8275, 21.8501,
14.3236

■ 22.8275, 21.8501,
14.3236

259.3897,
261.7625, 230.7328

■ 14.5862, 13.7468,
8.2048

■ 47.5787, 46.4981,
34.3875

■ 8.6139, 7.9448,
4.1366

■ 64.8192, 63.8116,
49.1696

■ 4.5453, 4.0596,
1.7006

■ 85.7903, 84.9640,
67.6765

■ 2.0150, 1.7070,
0.3611

■ 110.8571,
110.3396, 90.3269

■ 0.6424, 0.4282,
0.0000

140.3851,
140.3229, 117.5391

■ 0.0000, 0.0000,
0.0000

174.7396,

175.2982, 149.7318

214.2860,
215.6499, 187.3235

■ 22.8275, 21.8501,
14.3236

■ 22.8275, 21.8501,
14.3236

■ 21.1174, 19.4817,
10.5110

■ 24.7839, 24.4820,
18.9245

■ 19.6408, 17.3649,
7.4401

■ 26.9953, 27.3826,
24.3541

■ 18.3860, 15.4912,
5.0615

■ 29.4719, 30.5611,
30.6514

■ 17.3395, 13.8503,
3.3187

■ 32.2231, 34.0250,
37.8528

■ 16.4859, 12.4311,
2.1467

■ 35.2575, 37.7816,
45.9923

■ 15.8004, 11.2183,
1.4302

■ 38.5834, 41.8380,
55.1023

■ 15.6650, 10.9774,
1.2932

■ 42.2088, 46.2009,
65.2136

■ 46.1412, 50.8768,
76.3557

■ 50.3882, 55.8722,
88.5569

Harmonies

Analogous

The Analogous color harmony consists of three colors that are next to each other on the color wheel.



24.6546, 21.8501, 17.6501



22.8275, 21.8501, 14.3236



20.5574, 21.8501, 13.3695

Triad

The Triadic color harmony groups three colors that are evenly spaced from another and form a triangle on the color wheel.



22.8275, 21.8501, 14.3236



16.7094, 21.8501, 24.4009



23.2193, 21.8501, 35.9131

Complementary

The Complementary color scheme is a pair of colors which are on the opposite of each other on the color wheel.



22.8275, 21.8501, 14.3236



19.0464, 21.1734, 34.5354

Split Complementary

Split-complementary colors differ from the complementary color scheme. The scheme consists of three colors, the original color and two neighbors of the complement color.



20.9797, 21.8501, 38.5734



22.8275, 21.8501, 14.3236



17.3127, 21.8501, 31.2129

Square

The Square scheme is like the rectangle color scheme, but the four colors are evenly spaced on the color wheel.



22.8275, 21.8501, 14.3236



17.1263, 21.8501, 18.5225



18.8360, 21.8501, 36.7147



24.8921, 21.8501, 29.9744

Rectangle

The Rectangle color scheme consists of four colors that form a rectangle on the color wheel.



22.8275, 21.8501, 14.3236



19.1250, 21.8501, 14.0334



18.8360, 21.8501, 36.7147



22.5022, 21.8501, 37.2647

Sweetspot

The Sweet Spot groups the original color and five complimentary colors.



22.8281, 21.8511, 14.3240



51.9460, 53.4887, 51.6044



22.1101, 17.2675, 23.7888



11.3065, 11.6112, 11.0393



74.8435, 78.7412, 85.7492



12.6291, 13.2868, 14.4694

Same Dimension

The Same Dimension uses a secret algorithm to generate beautiful new colors.



22.8281, 21.8511, 14.3240



38.9210, 36.1785, 20.3195



26.9480, 30.0910, 15.6974



6.8526, 7.0851, 6.9921



12.9362, 9.1080, 1.0762



0.2723, 0.2449, 0.0329

Inverse Universe

The Inverse Universe completely reimagines the original color for something new.



19.0464, 21.1734, 34.5354



31.0791, 34.7623, 62.1985



15.6739, 14.4283, 33.4113



6.5861, 7.0380, 8.4180



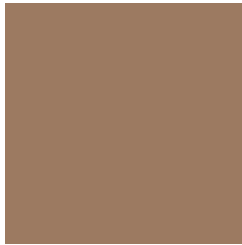
7.9814, 8.0544, 27.0412



0.1841, 0.2267, 0.4973

Previews

White Background



This preview shows how the XYZ color 22.8275, 21.8501, 14.3236 looks on a white background.

Color Contrast Check

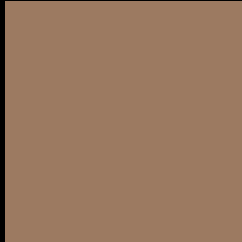
Large Text (above 18pt) WCAG AA ✓ Pass

Any Text WCAG AA × Fail

Large Text (above 18pt) WCAG AAA × Fail

Any Text WCAG AAA × Fail

Black Background



This preview shows how the XYZ color 22.8275, 21.8501, 14.3236 looks on a black background.

Color Contrast Check

Large Text (above 18pt) WCAG AA ✓ Pass

Any Text WCAG AA ✓ Pass

Large Text (above 18pt) WCAG AAA ✓ Pass

Any Text WCAG AAA × Fail

If you want to check with other color combinations, try the [Color Contrast Checker](#).

XYZ 22.8275, 21.8501, 14.3236

Background



This preview shows how black text looks on a background with the XYZ color 22.8275, 21.8501, 14.3236.



This preview shows how white text looks on a background with the XYZ color 22.8275, 21.8501,

Color Blindness Simulation

Color vision deficiency is a very complex topic, and I could not describe the different causes any better than Wikipedia does, so if you want to learn more, you should check out their [article about color blindness](#).

Dichromacy



Original Color

22.8275, 21.8501, 14.3236

Protanopia

20.6317, 22.0239, 15.2202

Deuteranopia

22.3142, 21.9538, 14.3707



Tritanopia

24.6073, 21.8601, 23.0012

Trichromacy



Original Color

22.8275, 21.8501, 14.3236

Protanomaly

21.3900, 21.8423, 14.8930

Deuteranomaly

22.3775, 21.8013, 14.3379

Tritanomaly

23.8498, 21.7237, 19.4591

Monochromacy



Original Color

22.8275, 21.8501, 14.3236

Achromatopsia

20.8660, 21.9526, 23.9064

Achromatomaly

21.3192, 21.6950, 19.8935

CSS Examples

Text

The CSS property to change the color of the text to XYZ 22.8275, 21.8501, 14.3236 is called "color". The color property can be set on classes, ids or directly on the HTML element.

This example shows how text in the color `rgb(156, 122, 97)` looks like.

```
.text, #text, p{  
    color:rgb(156, 122, 97)  
}
```

If you want to add a text shadow in that color use the text-shadow property, you can generate a text shadow directly with our [CSS Text Shadow Generator](#).

Here you see how black text with a 4 pixel rgb(156, 122, 97) colored shadow looks like.

```
.shadow{ text-shadow: 4px 4px 2px rgb(156, 122, 97) }
```

Border

The CSS property to change the border of an element to XYZ 22.8275, 21.8501, 14.3236 is called "border". The border property can be set on classes, ids or directly on the HTML element.

This example shows the color as border, it can be applied via the CSS property "border" or "border-color".

```
.border, #border, table{ border:4px solid rgb(156, 122, 97) }
```


If only the border color should be changed use the property `border-color`.

```
.border{ border-color:rgb(156, 122, 97) }
```

If you want to add a box shadow in that color use:

Here you see how a box with a 4 pixel `rgb(156, 122, 97)` colored shadow looks like.

```
.boxshadow{ -moz-box-shadow:4px 4px 4px  
4px rgb(156, 122, 97); -webkit-box-  
shadow:4px 4px 4px 4px rgb(156, 122, 97);  
box-shadow:4px 4px 4px 4px rgb(156, 122,  
97) }
```

Background

The CSS property to change the background color of an element to XYZ 22.8275, 21.8501, 14.3236 is called "background". The background property can be set on classes, ids or directly on the HTML element.

```
.background, #background, body{  
background: rgb(156, 122, 97) }
```

If only the background color should be changed can be used:

```
.background{ background-color: rgb(156,  
122, 97) }
```

This example shows the color as background, it is applied via the CSS property "background".

To optimize and compress your CSS code, you can use our [online CSS compressor and optimizer](#) based on csstidy. If you want to create a linear or radial gradient as background or border, check our [CSS Gradient Generator](#).

Hey! You found this booklet interesting? Support Converting Colors with the new Membership Option!

The pro membership hides all ads, plus gives you double the colors in the color bucket, and more awesome pro features!

[Learn more, Memberships starting at \\$2.50/m!](#)

**Follow me
on Twitter!**

@ConvertingColor