

Converting Colors

XYZ(22.8936, 22.1080, 15.2006)

Have a look what the booklet for
XYZ(22.8936, 22.1080, 15.2006)
contains.

XYZ(22.9008, 22.0546, 15.1065)	3
<i>Conversions</i>	4
<i>Details</i>	6
<i>Harmonies</i>	12
<i>Previews</i>	24
<i>Color Blindness Simulation</i>	28
<i>CSS Examples</i>	31

Color

**XYZ(22.9008, 22.0546,
15.1065)**

Conversions

Conversions Part 1

Format	Color
Hex	9B7B64
RGB	155, 123, 100
RGB Percent	61%, 48%, 39%
CMY	0.3922, 0.5176, 0.6078
CMYK	0.00, 0.21, 0.35, 0.39
HSL	25°, 22%, 50%
HSV	25°, 35%, 61%
XYZ	22.9008, 22.0546, 15.1065
YIQ	129.9460, 26.4550, -0.3690

Conversions

Conversions Part 2

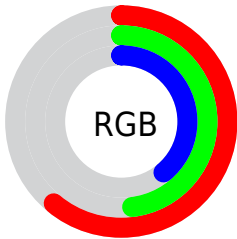
Format	Color
R_{YB}	155, 140, 100
Decimal	10189668
CIE _{Lab}	54.08, 9.04, 17.30
CIE _{LCh}	54, 19.518, 62.411
Yxy	22.0546, 0.3813, 0.3672
Android (android.graphics.Color)	4288379748 (0xFF9B7B64)
YUV	129.9460, -14.7634, 21.9724
Hunter-Lab	46.9623, 4.8600, 13.8017

Details

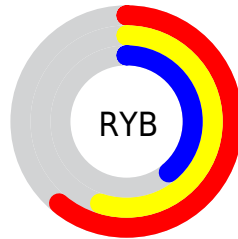
The XYZ color **22.9008, 22.0546, 15.1065** is a dark color, and the websafe version is hex **996666**. A complement of this color would be **19.4229, 21.5777, 34.1516**, and the grayscale version is **21.2435, 22.3498, 24.3389**.

A 20% lighter version of the original color is **47.4942, 46.5959, 35.7689**, and **8.6849, 8.0382, 4.4619** is the 20% darker color. If you saturate the color by 10%, you get **21.1534, 19.6482, 11.1683**, and if you desaturate by 10%, it is **24.8952, 24.7263, 19.8317**.

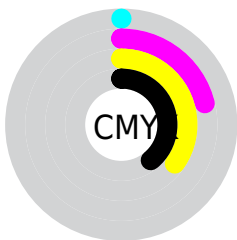
Distribution



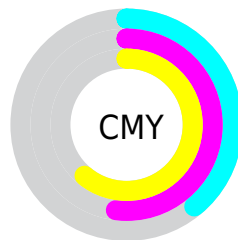
- Red (61%)
- Green (48%)
- Blue (39%)



- Red (61%)
- Yellow (55%)
- Blue (39%)



- Cyan (0%)
- Magenta (21%)
- Yellow (35%)
- Black (39%)



- Cyan (39%)
- Magenta (52%)
- Yellow (61%)

Brightness & Saturation Gradients

These gradients show how the XYZ color 22.9008, 22.0546, 15.1065 changes by changing the brightness by 10 percent. The first figure shows a shift by +10% for each color and the second figure -10%.

Similar to the brightness gradients but the following saturation gradients show a change of the XYZ color 22.9008, 22.0546, 15.1065 by changing the saturation by 10% instead.

■ 22.9008, 22.0546,
15.1065

■ 22.9008, 22.0546,
15.1065

259.7599,
262.8313, 235.6729

■ 14.6406, 13.8970,
8.7467

■ 47.6982, 46.8362,
35.7848

■ 8.6522, 8.0491,
4.4818

■ 64.9662, 64.2291,
50.9405

■ 4.5703, 4.1264,
1.8932

■ 85.9674, 85.4691,
69.8652

■ 2.0296, 1.7445,
0.4884

■ 111.0672,
110.9408, 92.9774

■ 0.6505, 0.4522,
0.0000

140.6310,
141.0284, 120.6957

■ 0.0000, 0.0000,
0.0000

175.0242,

176.1164, 153.4388

214.6120,
216.5893, 191.6249

■ 22.9008, 22.0546,
15.1065

■ 22.9008, 22.0546,
15.1065

■ 21.1534, 19.6482,
11.1683

■ 24.8952, 24.7263,
19.8317

■ 19.6403, 17.4952,
7.9721

■ 27.1450, 27.6684,
25.3829

■ 18.3503, 15.5873,
5.4704

■ 29.6602, 30.8900,
31.7980

■ 17.2704, 13.9144,
3.6093

■ 32.4500, 34.3986,
39.1122

■ 16.3859, 12.4656,
2.3271

■ 35.5227, 38.2015,
47.3586

■ 15.6780, 11.2280,
1.5419

■ 38.8867, 42.3056,
56.5689

■ 15.3981, 10.7295,
1.2594

■ 42.5497, 46.7177,
66.7730

■ 46.5192, 51.4442,
77.9997

■ 50.8024, 56.4916,
90.2764

Harmonies

Analogous

The Analogous color harmony consists of three colors that are next to each other on the color wheel.



24.5829, 22.0546, 18.3012



22.9008, 22.0546, 15.1065



20.7918, 22.0546, 14.1630

Triad

The Triadic color harmony groups three colors that are evenly spaced from another and form a triangle on the color wheel.



22.9008, 22.0546, 15.1065



17.1592, 22.0546, 24.5066



23.2163, 22.0546, 35.2378

Complementary

The Complementary color scheme is a pair of colors which are on the opposite of each other on the color wheel.



22.9008, 22.0546, 15.1065



19.4229, 21.5777, 34.1516

Split Complementary

Split-complementary colors differ from the complementary color scheme. The scheme consists of three colors, the original color and two neighbors of the complement color.



21.1336, 22.0546, 37.6168



22.9008, 22.0546, 15.1065



17.7158, 22.0546, 30.8062

Square

The Square scheme is like the rectangle color scheme, but the four colors are evenly spaced on the color wheel.



22.9008, 22.0546, 15.1065



17.5635, 22.0546, 19.0177



19.1363, 22.0546, 35.8737



24.7734, 22.0546, 29.8159

Rectangle

The Rectangle color scheme consists of four colors that form a rectangle on the color wheel.



22.9008, 22.0546, 15.1065



19.4510, 22.0546, 14.7827



19.1363, 22.0546, 35.8737



22.5497, 22.0546, 36.4574

Sweetspot

The Sweet Spot groups the original color and five complimentary colors.



22.9014, 22.0556, 15.1069



50.4774, 51.9520, 50.1693



22.2455, 17.7513, 24.1138



11.2999, 11.5980, 11.0371



74.8435, 78.7412, 85.7492



12.6291, 13.2868, 14.4694

Same Dimension

The Same Dimension uses a secret algorithm to generate beautiful new colors.



22.9014, 22.0556, 15.1069



38.3688, 35.8652, 21.0678



26.7909, 29.8347, 16.4035



6.4105, 6.6260, 6.5469



12.4039, 8.6902, 1.0236



0.2202, 0.1994, 0.0269

Inverse Universe

The Inverse Universe completely reimagines the original color for something new.



19.4229, 21.5777, 34.1516



31.1380, 34.8611, 60.6240



16.1814, 15.0946, 33.0711



6.1679, 6.5932, 7.8765



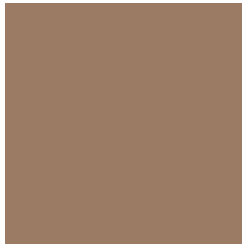
7.7386, 7.8739, 26.0197



0.1516, 0.1894, 0.4009

Previews

White Background



This preview shows how the XYZ color 22.9008, 22.0546, 15.1065 looks on a white background.

Color Contrast Check

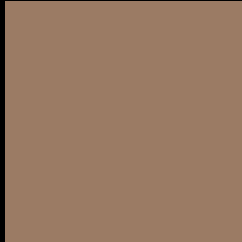
Large Text (above 18pt) WCAG AA ✓ Pass

Any Text WCAG AA × Fail

Large Text (above 18pt) WCAG AAA × Fail

Any Text WCAG AAA × Fail

Black Background



This preview shows how the XYZ color 22.9008, 22.0546, 15.1065 looks on a black background.

Color Contrast Check

Large Text (above 18pt) WCAG AA ✓ Pass

Any Text WCAG AA ✓ Pass

Large Text (above 18pt) WCAG AAA ✓ Pass

Any Text WCAG AAA × Fail

If you want to check with other color combinations, try the [Color Contrast Checker](#).

XYZ 22.9008, 22.0546, 15.1065

Background



This preview shows how black text looks on a background with the XYZ color 22.9008, 22.0546, 15.1065.



This preview shows how white text looks on a background with the XYZ color 22.9008, 22.0546,

Color Blindness Simulation

Color vision deficiency is a very complex topic, and I could not describe the different causes any better than Wikipedia does, so if you want to learn more, you should check out their [article about color blindness](#).

Dichromacy



Original Color

22.9008, 22.0546, 15.1065

Protanopia

20.7797, 22.0831, 15.9992

Deuteranopia

22.4568, 22.0108, 15.1215



Tritanopia

24.5937, 22.0213, 23.3764

Trichromacy



Original Color

22.9008, 22.0546, 15.1065

Protanomaly

21.4892, 22.0673, 15.6972

Deuteranomaly

22.6448, 22.1077, 15.1303

Tritanomaly

23.8911, 21.9090, 20.1092

Monochromacy



Original Color

22.9008, 22.0546, 15.1065

Achromatopsia

21.2178, 22.3228, 24.3095

Achromatomaly

21.5666, 21.9996, 20.5624

CSS Examples

Text

The CSS property to change the color of the text to XYZ 22.9008, 22.0546, 15.1065 is called "color". The color property can be set on classes, ids or directly on the HTML element.

This example shows how text in the color `rgb(155, 123, 100)` looks like.

```
.text, #text, p{  
    color:rgb(155, 123, 100)  
}
```

If you want to add a text shadow in that color use the text-shadow property, you can generate a text shadow directly with our [CSS Text Shadow Generator](#).

Here you see how black text with a 4 pixel rgb(155, 123, 100) colored shadow looks like.

```
.shadow{ text-shadow: 4px 4px 2px rgb(155, 123, 100) }
```

Border

The CSS property to change the border of an element to XYZ 22.9008, 22.0546, 15.1065 is called "border". The border property can be set on classes, ids or directly on the HTML element.

This example shows the color as border, it can be applied via the CSS property "border" or "border-color".

```
.border, #border, table{ border:4px solid rgb(155, 123, 100) }
```


If only the border color should be changed use the property `border-color`.

```
.border{ border-color:rgb(155, 123, 100) }
```

If you want to add a box shadow in that color use:

Here you see how a box with a 4 pixel `rgb(155, 123, 100)` colored shadow looks like.

```
.boxshadow{ -moz-box-shadow:4px 4px 4px  
4px rgb(155, 123, 100); -webkit-box-  
shadow:4px 4px 4px 4px rgb(155, 123, 100);  
box-shadow:4px 4px 4px 4px rgb(155, 123,  
100) }
```

Background

The CSS property to change the background color of an element to XYZ 22.9008, 22.0546, 15.1065 is called "background". The background property can be set on classes, ids or directly on the HTML element.

```
.background, #background, body{  
background: rgb(155, 123, 100) }
```

If only the background color should be changed can be used:

```
.background{ background-color: rgb(155,  
123, 100) }
```

This example shows the color as background, it is applied via the CSS property "background".

To optimize and compress your CSS code, you can use our [online CSS compressor and optimizer](#) based on csstidy. If you want to create a linear or radial gradient as background or border, check our [CSS Gradient Generator](#).

Hey! You found this booklet interesting? Support Converting Colors with the new Membership Option!

The pro membership hides all ads, plus gives you double the colors in the color bucket, and more awesome pro features!

[Learn more, Memberships starting at \\$2.50/m!](#)

**Follow me
on Twitter!**

@ConvertingColor