

Converting Colors

XYZ(22.9059, 19.4033, 8.2892)

Have a look what the booklet for
XYZ(22.9059, 19.4033, 8.2892)
contains.

XYZ(22.8371, 19.2963, 8.3153)	3
<i>Conversions</i>	4
<i>Details</i>	6
<i>Harmonies</i>	12
<i>Previews</i>	24
<i>Color Blindness Simulation</i>	28
<i>CSS Examples</i>	31

Color

**XYZ(22.8371, 19.2963,
8.3153)**

Conversions

Conversions Part 1

Format	Color
Hex	AA6A46
RGB	170, 106, 70
RGB Percent	67%, 42%, 27%
CMY	0.3333, 0.5843, 0.7255
CMYK	0.00, 0.38, 0.59, 0.33
HSL	22°, 42%, 47%
HSV	22°, 59%, 67%
XYZ	22.8371, 19.2963, 8.3153
YIQ	121.0320, 49.7000, 2.3720

Conversions

Conversions Part 2

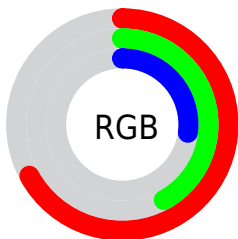
Format	Color
R_{YB}	170, 126, 70
Decimal	11168326
CIE Lab	51.03, 21.91, 30.72
CIE LCh	51, 37.732, 54.503
Yxy	19.2963, 0.4527, 0.3825
Android (android.graphics.Color)	4289358406 (0xFFAA6A46)
YUV	121.0320, -25.1588, 42.9449
Hunter-Lab	43.9276, 15.9255, 19.5259

Details

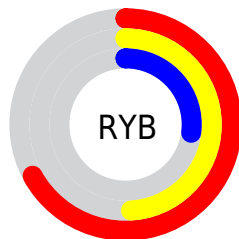
The XYZ color **22.8371, 19.2963, 8.3153** is a dark color, and the websafe version is hex **996633**. A complement of this color would be **18.3062, 21.2536, 41.1676**, and the grayscale version is **18.2523, 19.2028, 20.9119**.

A 20% lighter version of the original color is **47.5515, 42.2796, 23.1073**, and **8.6280, 6.6737, 1.7531** is the 20% darker color. If you saturate the color by 10%, you get **21.3237, 17.0101, 5.5277**, and if you desaturate by 10%, it is **24.6456, 21.9297, 11.9510**.

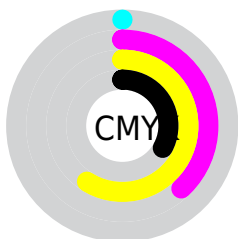
Distribution



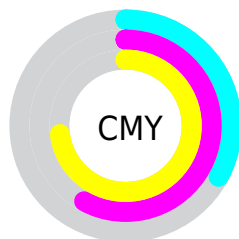
- Red (67%)
- Green (42%)
- Blue (27%)



- Red (67%)
- Yellow (49%)
- Blue (27%)



- Cyan (0%)
- Magenta (38%)
- Yellow (59%)
- Black (33%)



- Cyan (33%)
- Magenta (58%)
- Yellow (73%)

Brightness & Saturation Gradients

These gradients show how the XYZ color 22.8371, 19.2963, 8.3153 changes by changing the brightness by 10 percent. The first figure shows a shift by +10% for each color and the second figure -10%.

Similar to the brightness gradients but the following saturation gradients show a change of the XYZ color 22.8371, 19.2963, 8.3153 by changing the saturation by 10% instead.

■ 22.8371, 19.2963,
8.3153

■ 22.8371, 19.2963,
8.3153

259.4382,
248.0797, 188.2106

■ 14.5933, 11.8846,
4.2067

■ 47.5943, 42.2342,
23.1306

■ 8.6189, 6.6651,
1.7394

■ 64.8385, 58.5291,
34.6743

■ 4.5486, 3.2536,
0.3875

■ 85.8135, 78.5539,
49.5335

■ 2.0169, 1.2655,
0.0000

■ 110.8846,
102.6930, 68.1268

■ 0.6434, 0.1143,
0.0000

■ 140.4173,
131.3307, 90.8725

■ 0.0000, 0.0000,
0.0000

174.7769,

164.8514, 118.1894

214.3287,
203.6396, 150.4959

■ 22.8371, 19.2963,
8.3153

■ 22.8371, 19.2963,
8.3153

■ 21.3237, 17.0101,
5.5277

■ 24.6456, 21.9297,
11.9510

■ 20.0854, 15.0523,
3.5160

■ 26.7646, 24.9222,
16.4969

■ 19.1018, 13.4065,
2.1971

■ 29.2097, 28.2885,
22.0103

■ 18.3377, 12.0489,
1.4166

■ 31.9953, 32.0415,
28.5435

■ 18.2573, 11.9056,
1.3357

■ 35.1345, 36.1936,
36.1452

■ 38.6400, 40.7566,
44.8606

■ 42.5237, 45.7416,
54.7326

■ 46.7969, 51.1596,
65.8016

■ 51.4704, 57.0208,
78.1062

Harmonies

Analogous

The Analogous color harmony consists of three colors that are next to each other on the color wheel.



25.6864, 19.2963, 13.5792



22.8371, 19.2963, 8.3153



19.0375, 19.2963, 6.4624

Triad

The Triadic color harmony groups three colors that are evenly spaced from another and form a triangle on the color wheel.



22.8371, 19.2963, 8.3153



12.0777, 19.2963, 19.1002



21.4849, 19.2963, 45.8487

Complementary

The Complementary color scheme is a pair of colors which are on the opposite of each other on the color wheel.



22.8371, 19.2963, 8.3153



18.3062, 21.2536, 41.1676

Split Complementary

Split-complementary colors differ from the complementary color scheme. The scheme consists of three colors, the original color and two neighbors of the complement color.



17.6609, 19.2963, 48.8716



22.8371, 19.2963, 8.3153



12.5485, 19.2963, 30.7529

Square

The Square scheme is like the rectangle color scheme, but the four colors are evenly spaced on the color wheel.



22.8371, 19.2963, 8.3153



13.0906, 19.2963, 11.1836



14.4767, 19.2963, 42.6117



24.8345, 19.2963, 35.3675

Rectangle

The Rectangle color scheme consists of four colors that form a rectangle on the color wheel.



22.8371, 19.2963, 8.3153



16.5993, 19.2963, 6.7215



14.4767, 19.2963, 42.6117



20.1995, 19.2963, 47.8931

Sweetspot

The Sweet Spot groups the original color and five complimentary colors.



22.8376, 19.2973, 8.3157



58.3196, 58.4927, 52.4275



23.1409, 14.6758, 24.5348



12.6688, 12.5940, 10.8909



82.5889, 86.8899, 94.6231



15.4596, 16.2647, 17.7123

Same Dimension

The Same Dimension uses a secret algorithm to generate beautiful new colors.



22.8376, 19.2973, 8.3157



37.8565, 29.5662, 8.6124



29.4044, 32.4309, 10.5046



7.7439, 7.9680, 7.9191



13.4792, 8.8556, 0.9989



0.3764, 0.3124, 0.0405

Inverse Universe

The Inverse Universe completely reimagines the original color for something new.



18.3062, 21.2536, 41.1676



28.7812, 33.3276, 73.9178



13.0302, 10.7016, 39.4089



7.5170, 8.0709, 9.5800



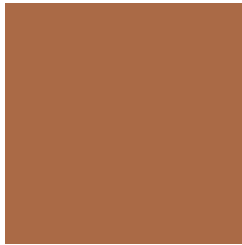
9.3981, 10.2565, 29.4599



0.2745, 0.3412, 0.7320

Previews

White Background



This preview shows how the XYZ color 22.8371, 19.2963, 8.3153 looks on a white background.

Color Contrast Check

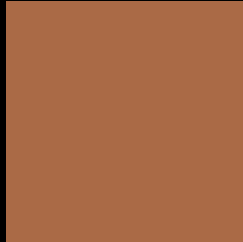
Large Text (above 18pt) WCAG AA ✓ Pass

Any Text WCAG AA × Fail

Large Text (above 18pt) WCAG AAA × Fail

Any Text WCAG AAA × Fail

Black Background



This preview shows how the XYZ color 22.8371, 19.2963, 8.3153 looks on a black background.

Color Contrast Check

Large Text (above 18pt) WCAG AA ✓ Pass

Any Text WCAG AA ✓ Pass

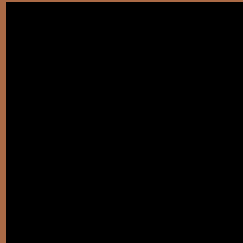
Large Text (above 18pt) WCAG AAA ✓ Pass

Any Text WCAG AAA × Fail

If you want to check with other color combinations, try the [Color Contrast Checker](#).

XYZ 22.8371, 19.2963, 8.3153

Background



This preview shows how black text looks on a background with the XYZ color 22.8371, 19.2963, 8.3153.



This preview shows how white text looks on a background with the XYZ color 22.8371, 19.2963,

Color Blindness Simulation

Color vision deficiency is a very complex topic, and I could not describe the different causes any better than Wikipedia does, so if you want to learn more, you should check out their [article about color blindness](#).

Dichromacy



Original Color

22.8371, 19.2963, 8.3153

Protanopia

17.9369, 19.4274, 9.6420

Deuteranopia

19.6832, 19.2977, 8.1563



Tritanopia

24.6476, 19.2957, 16.8934

Trichromacy



Original Color

22.8371, 19.2963, 8.3153

Protanomaly

19.3355, 19.0962, 9.1454

Deuteranomaly

20.7730, 19.1861, 8.2387

Tritanomaly

23.9291, 19.2974, 13.2900

Monochromacy



Original Color

22.8371, 19.2963, 8.3153

Achromatopsia

18.1737, 19.1202, 20.8219

Achromatomaly

19.2911, 18.9391, 15.2092

CSS Examples

Text

The CSS property to change the color of the text to XYZ 22.8371, 19.2963, 8.3153 is called "color". The color property can be set on classes, ids or directly on the HTML element.

This example shows how text in the color `rgb(170, 106, 70)` looks like.

```
.text, #text, p{  
    color:rgb(170, 106, 70)  
}
```

If you want to add a text shadow in that color use the text-shadow property, you can generate a text shadow directly with our [CSS Text Shadow Generator](#).

Here you see how black text with a 4 pixel rgb(170, 106, 70) colored shadow looks like.

```
.shadow{ text-shadow: 4px 4px 2px rgb(170, 106, 70) }
```

Border

The CSS property to change the border of an element to XYZ 22.8371, 19.2963, 8.3153 is called "border". The border property can be set on classes, ids or directly on the HTML element.

This example shows the color as border, it can be applied via the CSS property "border" or "border-color".

```
.border, #border, table{ border:4px solid rgb(170, 106, 70) }
```


If only the border color should be changed use the property `border-color`.

```
.border{ border-color:rgb(170, 106, 70) }
```

If you want to add a box shadow in that color use:

Here you see how a box with a 4 pixel `rgb(170, 106, 70)` colored shadow looks like.

```
.boxshadow{ -moz-box-shadow:4px 4px 4px  
4px rgb(170, 106, 70); -webkit-box-  
shadow:4px 4px 4px 4px rgb(170, 106, 70);  
box-shadow:4px 4px 4px 4px rgb(170, 106,  
70) }
```

Background

The CSS property to change the background color of an element to XYZ 22.8371, 19.2963, 8.3153 is called "background". The background property can be set on classes, ids or directly on the HTML element.

```
.background, #background, body{  
background: rgb(170, 106, 70) }
```

If only the background color should be changed can be used:

```
.background{ background-color: rgb(170,  
106, 70) }
```

This example shows the color as background, it is applied via the CSS property "background".

To optimize and compress your CSS code, you can use our [online CSS compressor and optimizer](#) based on csstidy. If you want to create a linear or radial gradient as background or border, check our [CSS Gradient Generator](#).

Hey! You found this booklet interesting? Support Converting Colors with the new Membership Option!

The pro membership hides all ads, plus gives you double the colors in the color bucket, and more awesome pro features!

[Learn more, Memberships starting at \\$2.50/m!](#)

**Follow me
on Twitter!**

@ConvertingColor