

Converting Colors

XYZ(23.1033, 20.4581, 12.6287)

Have a look what the booklet for
XYZ(23.1033, 20.4581, 12.6287)
contains.

XYZ(23.1033, 20.4581, 12.6287)	3
<i>Conversions</i>	4
<i>Details</i>	6
<i>Harmonies</i>	12
<i>Previews</i>	24
<i>Color Blindness Simulation</i>	28
<i>CSS Examples</i>	31

Color

**XYZ(23.1033, 20.4581,
12.6287)**

Conversions

Conversions Part 1

Format	Color
Hex	A4715B
RGB	164, 113, 91
RGB Percent	64%, 44%, 36%
CMY	0.3569, 0.5568, 0.6431
CMYK	0.00, 0.31, 0.45, 0.36
HSL	18°, 29%, 50%
HSV	18°, 45%, 64%
XYZ	23.1033, 20.4581, 12.6287
YIQ	125.7410, 37.4580, 3.9700

Conversions

Conversions Part 2

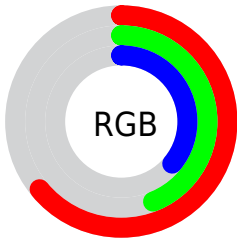
Format	Color
RYB	164, 122, 91
Decimal	10776923
CIELab	52.35, 17.43, 20.31
CIELCh	52, 26.762, 49.372
Yxy	20.4581, 0.4112, 0.3641
Android (android.graphics.Color)	4288967003 (0xFFA4715B)
YUV	125.7410, -17.1273, 33.5531
Hunter-Lab	45.2306, 12.0222, 15.1073

Details

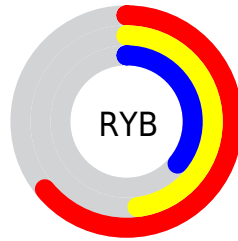
The XYZ color **23.1033, 20.4581, 12.6287** is a dark color, and the websafe version is hex **996666**. A complement of this color would be **20.6878, 24.2495, 38.7122**, and the grayscale version is **19.7911, 20.8218, 22.6749**.

A 20% lighter version of the original color is **48.0816, 44.2055, 31.1976**, and **8.7944, 7.2851, 3.4253** is the 20% darker color. If you saturate the color by 10%, you get **21.2732, 17.8091, 8.9016**, and if you desaturate by 10%, it is **25.2504, 23.4937, 17.2247**.

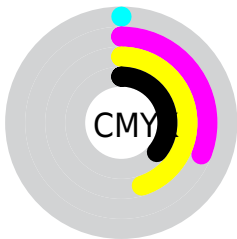
Distribution



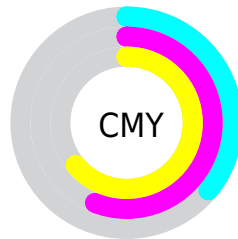
- Red (64%)
- Green (44%)
- Blue (36%)



- Red (64%)
- Yellow (48%)
- Blue (36%)



- Cyan (0%)
- Magenta (31%)
- Yellow (45%)
- Black (36%)



- Cyan (36%)
- Magenta (56%)
- Yellow (64%)

Brightness & Saturation Gradients

These gradients show how the XYZ color 23.1033, 20.4581, 12.6287 changes by changing the brightness by 10 percent. The first figure shows a shift by +10% for each color and the second figure -10%.

Similar to the brightness gradients but the following saturation gradients show a change of the XYZ color 23.1033, 20.4581, 12.6287 by changing the saturation by 10% instead.

■ 23.1033, 20.4581,
12.6287

■ 23.1033, 20.4581,
12.6287

260.7806,
254.3844, 219.6478

■ 14.7909, 12.7285,
7.0457

■ 48.0283, 44.1839,
31.3164

■ 8.7581, 7.2418,
3.4118

■ 65.3716, 60.9489,
45.2582

■ 4.6396, 3.6138,
1.3086

■ 86.4560, 81.4944,
62.8233

■ 2.0700, 1.4600,
0.0688

■ 111.6467,
106.2049, 84.4303

■ 0.6728, 0.2603,
0.0000

141.3092,
135.4647, 110.4977

■ 0.0000, 0.0000,
0.0000

175.8087,

169.6583, 141.4441

215.5107,
209.1701, 177.6879

■ 23.1033, 20.4581,
12.6287

■ 23.1033, 20.4581,
12.6287

■ 21.2732, 17.8091,
8.9016

■ 25.2504, 23.4937,
17.2247

■ 19.7425, 15.5277,
5.9865

■ 27.7279, 26.9279,
22.7391

■ 18.4939, 13.5976,
3.8218

■ 30.5503, 30.7760,
29.2190

■ 17.5074, 11.9999,
2.3360

■ 33.7307, 35.0515,
36.7079

■ 16.7598, 10.7136,
1.4431

■ 37.2815, 39.7672,
45.2466

■ 16.4263, 10.1255,
1.0887

■ 41.2144, 44.9355,
54.8739

■ 45.5407, 50.5681,
65.6263

■ 50.2712, 56.6764,
77.5387

■ 55.4162, 63.2715,
90.6446

Harmonies

Analogous

The Analogous color harmony consists of three colors that are next to each other on the color wheel.



24.8844, 20.4581, 17.6112



23.1033, 20.4581, 12.6287



20.4386, 20.4581, 10.4413

Triad

The Triadic color harmony groups three colors that are evenly spaced from another and form a triangle on the color wheel.



23.1033, 20.4581, 12.6287



14.6879, 20.4581, 19.5921



21.2560, 20.4581, 39.8782

Complementary

The Complementary color scheme is a pair of colors which are on the opposite of each other on the color wheel.



23.1033, 20.4581, 12.6287



20.6878, 24.2495, 38.7122

Split Complementary

Split-complementary colors differ from the complementary color scheme. The scheme consists of three colors, the original color and two neighbors of the complement color.



18.4838, 20.4581, 40.7677



23.1033, 20.4581, 12.6287



14.8620, 20.4581, 27.6980

Square

The Square scheme is like the rectangle color scheme, but the four colors are evenly spaced on the color wheel.



23.1033, 20.4581, 12.6287



15.6940, 20.4581, 13.7829



16.1945, 20.4581, 35.8924



23.7501, 20.4581, 33.6903

Rectangle

The Rectangle color scheme consists of four colors that form a rectangle on the color wheel.



23.1033, 20.4581, 12.6287



18.5946, 20.4581, 10.4065



16.1945, 20.4581, 35.8924



20.3206, 20.4581, 40.8542

Sweetspot

The Sweet Spot groups the original color and five complimentary colors.



23.1038, 20.4591, 12.6291



56.1491, 56.8036, 54.6567



23.9410, 17.3309, 27.7140



12.0232, 12.0773, 11.3623



78.6606, 82.7571, 90.1225



14.0027, 14.7319, 16.0430

Same Dimension

The Same Dimension uses a secret algorithm to generate beautiful new colors.



23.1038, 20.4591, 12.6291



38.7720, 32.5576, 16.4691



28.0091, 30.2696, 14.2642



7.2398, 7.4179, 7.4303



12.6325, 7.8389, 0.8473



0.3051, 0.2440, 0.0310

Inverse Universe

The Inverse Universe completely reimagines the original color for something new.



20.6878, 24.2495, 38.7122



33.8110, 40.2480, 69.7389



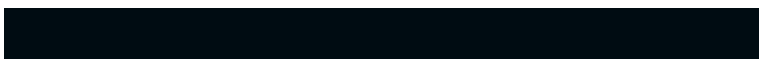
16.1283, 15.1305, 37.1923



7.0950, 7.6491, 9.0055



9.8440, 11.4675, 28.6244



0.2452, 0.3177, 0.6142

Previews

White Background



This preview shows how the XYZ color 23.1033, 20.4581, 12.6287 looks on a white background.

Color Contrast Check

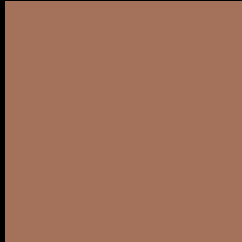
Large Text (above 18pt) WCAG AA ✓ Pass

Any Text WCAG AA × Fail

Large Text (above 18pt) WCAG AAA × Fail

Any Text WCAG AAA × Fail

Black Background



This preview shows how the XYZ color 23.1033, 20.4581, 12.6287 looks on a black background.

Color Contrast Check

Large Text (above 18pt) WCAG AA ✓ Pass

Any Text WCAG AA ✓ Pass

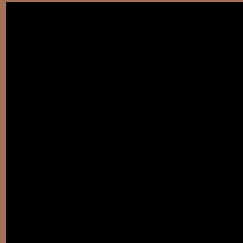
Large Text (above 18pt) WCAG AAA ✓ Pass

Any Text WCAG AAA × Fail

If you want to check with other color combinations, try the [Color Contrast Checker](#).

XYZ 23.1033, 20.4581, 12.6287

Background



This preview shows how black text looks on a background with the XYZ color 23.1033, 20.4581, 12.6287.



This preview shows how white text looks on a background with the XYZ color 23.1033, 20.4581,

Color Blindness Simulation

Color vision deficiency is a very complex topic, and I could not describe the different causes any better than Wikipedia does, so if you want to learn more, you should check out their [article about color blindness](#).

Dichromacy



Original Color

23.1033, 20.4581, 12.6287

Protanopia

19.2765, 20.5801, 14.0227

Deuteranopia

20.9564, 20.5607, 12.5369



Tritanopia

24.4645, 20.3523, 19.7785

Trichromacy



Original Color

23.1033, 20.4581, 12.6287

Protanomaly

20.5348, 20.5026, 13.4648

Deuteranomaly

21.5332, 20.3308, 12.4622

Tritanomaly

23.7998, 20.2339, 16.8385

Monochromacy



Original Color

23.1033, 20.4581, 12.6287

Achromatopsia

19.8309, 20.8637, 22.7206

Achromatomaly

20.6332, 20.4424, 18.4811

CSS Examples

Text

The CSS property to change the color of the text to XYZ 23.1033, 20.4581, 12.6287 is called "color". The color property can be set on classes, ids or directly on the HTML element.

This example shows how text in the color `rgb(164, 113, 91)` looks like.

```
.text, #text, p{  
    color:rgb(164, 113, 91)  
}
```

If you want to add a text shadow in that color use the text-shadow property, you can generate a text shadow directly with our [CSS Text Shadow Generator](#).

Here you see how black text with a 4 pixel rgb(164, 113, 91) colored shadow looks like.

```
.shadow{ text-shadow: 4px 4px 2px rgb(164, 113, 91) }
```

Border

The CSS property to change the border of an element to XYZ 23.1033, 20.4581, 12.6287 is called "border". The border property can be set on classes, ids or directly on the HTML element.

This example shows the color as border, it can be applied via the CSS property "border" or "border-color".

```
.border, #border, table{ border:4px solid rgb(164, 113, 91) }
```


If only the border color should be changed use the property border-color.

```
.border{ border-color:rgb(164, 113, 91) }
```

If you want to add a box shadow in that color use:

Here you see how a box with a 4 pixel rgb(164, 113, 91) colored shadow looks like.

```
.boxshadow{ -moz-box-shadow:4px 4px 4px  
4px rgb(164, 113, 91); -webkit-box-  
shadow:4px 4px 4px 4px rgb(164, 113, 91);  
box-shadow:4px 4px 4px 4px rgb(164, 113,  
91) }
```

Background

The CSS property to change the background color of an element to XYZ 23.1033, 20.4581, 12.6287 is called "background". The background property can be set on classes, ids or directly on the HTML element.

```
.background, #background, body{  
background: rgb(164, 113, 91) }
```

If only the background color should be changed can be used:

```
.background{ background-color: rgb(164,  
113, 91) }
```

This example shows the color as background, it is applied via the CSS property "background".

To optimize and compress your CSS code, you can use our [online CSS compressor and optimizer](#) based on csstidy. If you want to create a linear or radial gradient as background or border, check our [CSS Gradient Generator](#).

Hey! You found this booklet interesting? Support Converting Colors with the new Membership Option!

The pro membership hides all ads, plus gives you double the colors in the color bucket, and more awesome pro features!

[Learn more, Memberships starting at \\$2.50/m!](#)

**Follow me
on Twitter!**

@ConvertingColor