

Converting Colors

XYZ(23.3561, 20.1789, 8.9673)

Have a look what the booklet for
XYZ(23.3561, 20.1789, 8.9673)
contains.

XYZ(23.3561, 20.1789, 8.9673)	3
<i>Conversions</i>	4
<i>Details</i>	6
<i>Harmonies</i>	12
<i>Previews</i>	24
<i>Color Blindness Simulation</i>	28
<i>CSS Examples</i>	31

Color

**XYZ(23.3561, 20.1789,
8.9673)**

Conversions

Conversions Part 1

Format	Color
Hex	AA6E49
RGB	170, 110, 73
RGB Percent	67%, 43%, 29%
CMY	0.3333, 0.5686, 0.7137
CMYK	0.00, 0.35, 0.57, 0.33
HSL	23°, 40%, 48%
HSV	23°, 57%, 67%
XYZ	23.3561, 20.1789, 8.9673
YIQ	123.7220, 47.6370, 1.2130

Conversions

Conversions Part 2

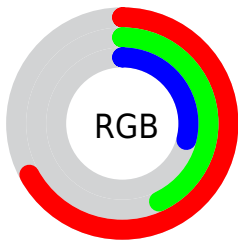
Format	Color
R_{YB}	170, 133, 73
Decimal	11169353
CIE Lab	52.04, 19.91, 30.29
CIE LCh	52, 36.248, 56.690
Yxy	20.1789, 0.4449, 0.3843
Android (android.graphics.Color)	4289359433 (0xFFAA6E49)
YUV	123.7220, -25.0059, 40.5858
Hunter-Lab	44.9209, 14.1973, 19.6089

Details

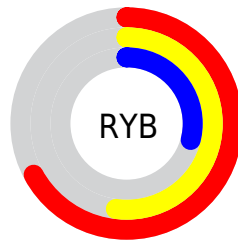
The XYZ color **23.3561, 20.1789, 8.9673** is a dark color, and the websafe version is hex **996633**. A complement of this color would be **18.3905, 21.0930, 41.1322**, and the grayscale version is **19.1355, 20.1321, 21.9238**.

A 20% lighter version of the original color is **48.4281, 43.7398, 24.3025**, and **8.8717, 7.1065, 2.0027** is the 20% darker color. If you saturate the color by 10%, you get **21.7997, 17.8483, 6.0377**, and if you desaturate by 10%, it is **25.2021, 22.8424, 12.7539**.

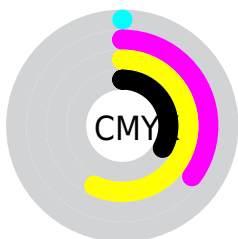
Distribution



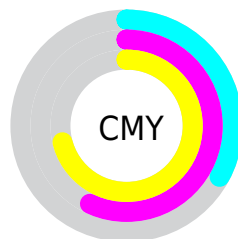
- Red (67%)
- Green (43%)
- Blue (29%)



- Red (67%)
- Yellow (52%)
- Blue (29%)



- Cyan (0%)
- Magenta (35%)
- Yellow (57%)
- Black (33%)



- Cyan (33%)
- Magenta (57%)
- Yellow (71%)

Brightness & Saturation Gradients

These gradients show how the XYZ color 23.3561, 20.1789, 8.9673 changes by changing the brightness by 10 percent. The first figure shows a shift by +10% for each color and the second figure -10%.

Similar to the brightness gradients but the following saturation gradients show a change of the XYZ color 23.3561, 20.1789, 8.9673 by changing the saturation by 10% instead.

■ 23.3561, 20.1789,
8.9673

■ 23.3561, 20.1789,
8.9673

262.0501,
252.8820, 193.3429

■ 14.9788, 12.5252,
4.6233

■ 48.4397, 43.7169,
24.4108

■ 8.8907, 7.1024,
1.9732

■ 65.8768, 60.3700,
36.3474

■ 4.7265, 3.5262,
0.5387

■ 87.0645, 80.7916,
51.6519

■ 2.1208, 1.4122,
0.0000

■ 112.3682,
105.3662, 70.7429

■ 0.7005, 0.2257,
0.0000

■ 142.1533,
134.4781, 94.0390

■ 0.0000, 0.0000,
0.0000

176.7850,

168.5118, 121.9587

216.6288,
207.8516, 154.9204

■ 23.3561, 20.1789,
8.9673

■ 23.3561, 20.1789,
8.9673

■ 21.7997, 17.8483,
6.0377

■ 25.2021, 22.8424,
12.7539

■ 20.5140, 15.8331,
3.8945

■ 27.3523, 25.8494,
17.4581

■ 19.4795, 14.1183,
2.4576

■ 29.8217, 29.2133,
23.1362

■ 18.6687, 12.6846,
1.6080

■ 32.6239, 32.9463,
29.8397

■ 18.4593, 12.3096,
1.4031

■ 35.7717, 37.0597,
37.6163

■ 39.2770, 41.5642,
46.5107

■ 43.1513, 46.4703,
56.5653

■ 47.4055, 51.7879,
67.8200

■ 52.0500, 57.5267,
80.3129

Harmonies

Analogous

The Analogous color harmony consists of three colors that are next to each other on the color wheel.



26.2609, 20.1789, 14.0342



23.3561, 20.1789, 8.9673



19.5930, 20.1789, 7.2655

Triad

The Triadic color harmony groups three colors that are evenly spaced from another and form a triangle on the color wheel.



23.3561, 20.1789, 8.9673



12.9196, 20.1789, 20.8161



22.5543, 20.1789, 45.6548

Complementary

The Complementary color scheme is a pair of colors which are on the opposite of each other on the color wheel.



23.3561, 20.1789, 8.9673



18.3905, 21.0930, 41.1322

Split Complementary

Split-complementary colors differ from the complementary color scheme. The scheme consists of three colors, the original color and two neighbors of the complement color.



18.7717, 20.1789, 49.2222



23.3561, 20.1789, 8.9673



13.5013, 20.1789, 32.4479

Square

The Square scheme is like the rectangle color scheme, but the four colors are evenly spaced on the color wheel.



23.3561, 20.1789, 8.9673



13.8289, 20.1789, 12.5769



15.5330, 20.1789, 43.7663



25.7578, 20.1789, 35.1621

Rectangle

The Rectangle color scheme consists of four colors that form a rectangle on the color wheel.



23.3561, 20.1789, 8.9673



17.2087, 20.1789, 7.6667



15.5330, 20.1789, 43.7663



21.2952, 20.1789, 47.8249

Sweetspot

The Sweet Spot groups the original color and five complimentary colors.



23.3566, 20.1799, 8.9677



59.0580, 59.5999, 53.8131



23.2936, 15.0447, 24.3894



12.9406, 12.9874, 11.4442



82.5889, 86.8899, 94.6231



15.4596, 16.2647, 17.7123

Same Dimension

The Same Dimension uses a secret algorithm to generate beautiful new colors.



23.3566, 20.1799, 8.9677



39.0053, 31.5407, 9.9920



29.8484, 33.1636, 11.1316



7.7569, 7.9939, 7.9234



13.6293, 9.1559, 1.0489



0.3812, 0.3219, 0.0420

Inverse Universe

The Inverse Universe completely reimagines the original color for something new.



18.3905, 21.0930, 41.1322



29.0920, 33.2638, 73.8891



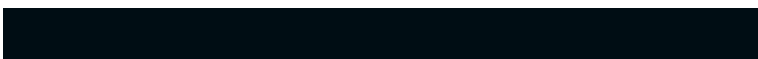
13.3260, 10.9639, 39.4440



7.5036, 8.0440, 9.5755



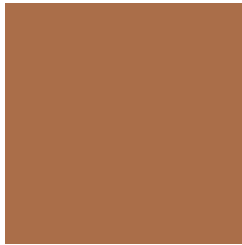
9.1196, 9.6993, 29.3670



0.2689, 0.3301, 0.7302

Previews

White Background



This preview shows how the XYZ color 23.3561, 20.1789, 8.9673 looks on a white background.

Color Contrast Check

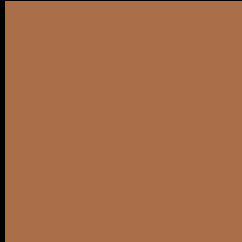
Large Text (above 18pt) WCAG AA ✓ Pass

Any Text WCAG AA × Fail

Large Text (above 18pt) WCAG AAA × Fail

Any Text WCAG AAA × Fail

Black Background



This preview shows how the XYZ color 23.3561, 20.1789, 8.9673 looks on a black background.

Color Contrast Check

Large Text (above 18pt) WCAG AA ✓ Pass

Any Text WCAG AA ✓ Pass

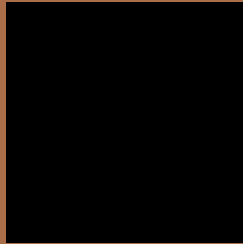
Large Text (above 18pt) WCAG AAA ✓ Pass

Any Text WCAG AAA × Fail

If you want to check with other color combinations, try the [Color Contrast Checker](#).

XYZ 23.3561, 20.1789, 8.9673

Background



This preview shows how black text looks on a background with the XYZ color 23.3561, 20.1789, 8.9673.



This preview shows how white text looks on a background with the XYZ color 23.3561, 20.1789,

8.9673.

Color Blindness Simulation

Color vision deficiency is a very complex topic, and I could not describe the different causes any better than Wikipedia does, so if you want to learn more, you should check out their [article about color blindness](#).

Dichromacy



Original Color

23.3561, 20.1789, 8.9673

Protanopia

18.8621, 20.4515, 10.1611

Deuteranopia

20.6831, 20.3240, 8.7940



Tritanopia

25.2658, 20.1796, 18.1862

Trichromacy



Original Color

23.3561, 20.1789, 8.9673

Protanomaly

20.2337, 20.2506, 9.6798

Deuteranomaly

21.7132, 20.3296, 8.9105

Tritanomaly

24.4756, 20.1679, 14.1581

Monochromacy



Original Color

23.3561, 20.1789, 8.9673

Achromatopsia

19.1579, 20.1556, 21.9495

Achromatomaly

20.1311, 19.8763, 16.1401

CSS Examples

Text

The CSS property to change the color of the text to XYZ 23.3561, 20.1789, 8.9673 is called "color". The color property can be set on classes, ids or directly on the HTML element.

This example shows how text in the color `rgb(170, 110, 73)` looks like.

```
.text, #text, p{  
    color:rgb(170, 110, 73)  
}
```

If you want to add a text shadow in that color use the text-shadow property, you can generate a text shadow directly with our [CSS Text Shadow Generator](#).

Here you see how black text with a 4 pixel rgb(170, 110, 73) colored shadow looks like.

```
.shadow{ text-shadow: 4px 4px 2px rgb(170, 110, 73) }
```

Border

The CSS property to change the border of an element to XYZ 23.3561, 20.1789, 8.9673 is called "border". The border property can be set on classes, ids or directly on the HTML element.

This example shows the color as border, it can be applied via the CSS property "border" or "border-color".

```
.border, #border, table{ border:4px solid rgb(170, 110, 73) }
```


If only the border color should be changed use the property `border-color`.

```
.border{ border-color:rgb(170, 110, 73) }
```

If you want to add a box shadow in that color use:

Here you see how a box with a 4 pixel `rgb(170, 110, 73)` colored shadow looks like.

```
.boxshadow{ -moz-box-shadow:4px 4px 4px  
4px rgb(170, 110, 73); -webkit-box-  
shadow:4px 4px 4px 4px rgb(170, 110, 73);  
box-shadow:4px 4px 4px 4px rgb(170, 110,  
73) }
```

Background

The CSS property to change the background color of an element to XYZ 23.3561, 20.1789, 8.9673 is called "background". The background property can be set on classes, ids or directly on the HTML element.

```
.background, #background, body{  
background: rgb(170, 110, 73) }
```

If only the background color should be changed can be used:

```
.background{ background-color: rgb(170,  
110, 73) }
```

This example shows the color as background, it is applied via the CSS property "background".

To optimize and compress your CSS code, you can use our [online CSS compressor and optimizer](#) based on csstidy. If you want to create a linear or radial gradient as background or border, check our [CSS Gradient Generator](#).

Hey! You found this booklet interesting? Support Converting Colors with the new Membership Option!

The pro membership hides all ads, plus gives you double the colors in the color bucket, and more awesome pro features!

[Learn more, Memberships starting at \\$2.50/m!](#)

**Follow me
on Twitter!**

@ConvertingColor