

Converting Colors

XYZ(23.5540, 23.0157, 14.8449)

Have a look what the booklet for
XYZ(23.5540, 23.0157, 14.8449)
contains.

XYZ(23.5701, 22.9716, 14.7470)	3
<i>Conversions</i>	4
<i>Details</i>	6
<i>Harmonies</i>	12
<i>Previews</i>	24
<i>Color Blindness Simulation</i>	28
<i>CSS Examples</i>	31

Color

**XYZ(23.5701, 22.9716,
14.7470)**

Conversions

Conversions Part 1

Format	Color
Hex	9D7E62
RGB	157, 126, 98
RGB Percent	62%, 49%, 38%
CMY	0.3843, 0.5059, 0.6157
CMYK	0.00, 0.20, 0.38, 0.38
HSL	28°, 23%, 50%
HSV	28°, 38%, 62%
XYZ	23.5701, 22.9716, 14.7470
YIQ	132.0770, 27.4640, -2.1360

Conversions

Conversions Part 2

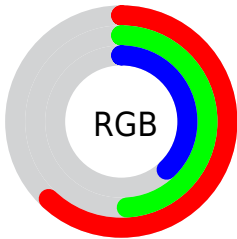
Format	Color
R_{YB}	157, 151, 98
Decimal	10321506
CIE _{Lab}	55.04, 7.91, 19.78
CIE _{LCh}	55, 21.302, 68.199
Yxy	22.9716, 0.3846, 0.3748
Android (android.graphics.Color)	4288511586 (0xFF9D7E62)
YUV	132.0770, -16.8000, 21.8575
Hunter-Lab	47.9287, 3.9065, 15.3074

Details

The XYZ color **23.5701, 22.9716, 14.7470** is a dark color, and the websafe version is hex **996666**. A complement of this color would be **18.9729, 20.7310, 34.8999**, and the grayscale version is **22.0121, 23.1585, 25.2196**.

A 20% lighter version of the original color is **48.9855, 48.5563, 35.2243**, and **8.9603, 8.4898, 4.2984** is the 20% darker color. If you saturate the color by 10%, you get **21.8888, 20.6813, 10.8811**, and if you desaturate by 10%, it is **25.4850, 25.4962, 19.4087**.

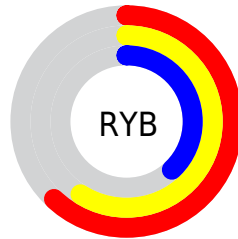
Distribution



Red (62%)

Green (49%)

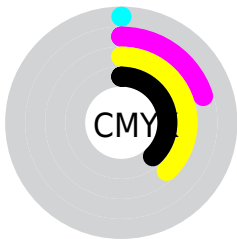
Blue (38%)



Red (62%)

Yellow (59%)

Blue (38%)

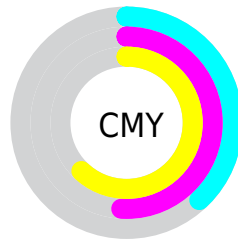


Cyan (0%)

Magenta (20%)

Yellow (38%)

Black (38%)



Cyan (38%)

Magenta (51%)

Yellow (62%)

Brightness & Saturation Gradients

These gradients show how the XYZ color 23.5701, 22.9716, 14.7470 changes by changing the brightness by 10 percent. The first figure shows a shift by +10% for each color and the second figure -10%.

Similar to the brightness gradients but the following saturation gradients show a change of the XYZ color 23.5701, 22.9716, 14.7470 by changing the saturation by 10% instead.

■ 23.5701, 22.9716,
14.7470

■ 23.5701, 22.9716,
14.7470

263.1208,
267.5791, 233.4175

■ 15.1380, 14.5725,
8.4974

■ 48.7875, 48.3467,
35.1447

■ 9.0033, 8.5199,
4.3225

■ 66.3036, 66.0915,
50.1299

■ 4.8004, 4.4294,
1.8039

■ 87.5785, 87.7204,
68.8640

■ 2.1642, 1.9165,
0.4305

■ 112.9773,
113.6177, 91.7656

■ 0.7238, 0.5583,
0.0000

142.8657,
144.1678, 119.2532

■ 0.0000, 0.0000,
0.0000

177.6088,

179.7551, 151.7454

217.5720,
220.7641, 189.6606

■ 23.5701, 22.9716,
14.7470

■ 23.5701, 22.9716,
14.7470

■ 21.8888, 20.6813,
10.8811

■ 25.4850, 25.4962,
19.4087

■ 20.4288, 18.6144,
7.7639

■ 27.6415, 28.2591,
24.9067

■ 19.1789, 16.7640,
5.3455

■ 30.0496, 31.2681,
31.2806

■ 18.1263, 15.1212,
3.5691

■ 32.7179, 34.5297,
38.5670

■ 17.2563, 13.6765,
2.3691

■ 35.6546, 38.0501,
46.8001

■ 16.5455, 12.4164,
1.6337

■ 38.8677, 41.8354,
56.0128

■ 16.3881, 12.1349,
1.4785

■ 42.3647, 45.8914,
66.2360

■ 46.1528, 50.2235,
77.4996

■ 50.2389, 54.8373,
89.8319

Harmonies

Analogous

The Analogous color harmony consists of three colors that are next to each other on the color wheel.



25.6140, 22.9716, 17.7791



23.5701, 22.9716, 14.7470



21.1904, 22.9716, 14.1917

Triad

The Triadic color harmony groups three colors that are evenly spaced from another and form a triangle on the color wheel.



23.5701, 22.9716, 14.7470



17.6273, 22.9716, 26.9198



24.7745, 22.9716, 36.7328

Complementary

The Complementary color scheme is a pair of colors which are on the opposite of each other on the color wheel.



23.5701, 22.9716, 14.7470



18.9729, 20.7310, 34.8999

Split Complementary

Split-complementary colors differ from the complementary color scheme. The scheme consists of three colors, the original color and two neighbors of the complement color.



22.4901, 22.9716, 40.2792



23.5701, 22.9716, 14.7470



18.4452, 22.9716, 33.9810

Square

The Square scheme is like the rectangle color scheme, but the four colors are evenly spaced on the color wheel.



23.5701, 22.9716, 14.7470



17.8705, 22.9716, 20.4721



20.1850, 22.9716, 39.1902



26.3436, 22.9716, 30.1782

Rectangle

The Rectangle color scheme consists of four colors that form a rectangle on the color wheel.



23.5701, 22.9716, 14.7470



19.7507, 22.9716, 15.1841



20.1850, 22.9716, 39.1902



24.0585, 22.9716, 38.3656

Sweetspot

The Sweet Spot groups the original color and five complimentary colors.



23.5707, 22.9727, 14.7475



52.1958, 53.9884, 51.6877



22.2661, 17.5012, 23.1367



11.3670, 11.7322, 11.0595



74.8435, 78.7412, 85.7492



12.6291, 13.2868, 14.4694

Same Dimension

The Same Dimension uses a secret algorithm to generate beautiful new colors.



23.5707, 22.9727, 14.7475



39.6877, 37.7118, 20.5750



27.8363, 31.5039, 16.1693



6.8797, 7.1394, 7.0011



13.3467, 9.9291, 1.2131



0.2807, 0.2617, 0.0357

Inverse Universe

The Inverse Universe completely reimagines the original color for something new.



18.9729, 20.7310, 34.8999



30.2520, 33.1082, 61.9228



15.6771, 14.1393, 33.8013



6.5586, 6.9830, 8.4089



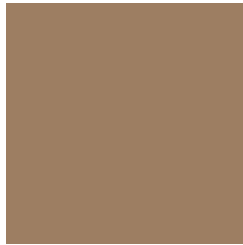
7.4604, 7.0124, 26.8676



0.1756, 0.2098, 0.4945

Previews

White Background



This preview shows how the XYZ color 23.5701, 22.9716, 14.7470 looks on a white background.

Color Contrast Check

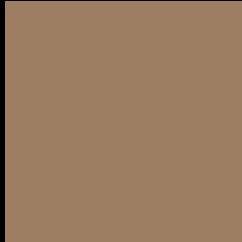
Large Text (above 18pt) WCAG AA ✓ Pass

Any Text WCAG AA × Fail

Large Text (above 18pt) WCAG AAA × Fail

Any Text WCAG AAA × Fail

Black Background



This preview shows how the XYZ color 23.5701, 22.9716, 14.7470 looks on a black background.

Color Contrast Check

Large Text (above 18pt) WCAG AA ✓ Pass

Any Text WCAG AA ✓ Pass

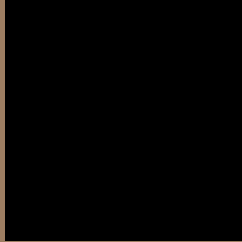
Large Text (above 18pt) WCAG AAA ✓ Pass

Any Text WCAG AAA × Fail

If you want to check with other color combinations, try the [Color Contrast Checker](#).

XYZ 23.5701, 22.9716, 14.7470

Background



This preview shows how black text looks on a background with the XYZ color 23.5701, 22.9716, 14.7470.



This preview shows how white text looks on a background with the XYZ color 23.5701, 22.9716,

Color Blindness Simulation

Color vision deficiency is a very complex topic, and I could not describe the different causes any better than Wikipedia does, so if you want to learn more, you should check out their [article about color blindness](#).

Dichromacy



Original Color

23.5701, 22.9716, 14.7470

Protanopia

21.5847, 23.1048, 15.6340

Deuteranopia

23.3758, 22.8715, 14.7379



Tritanopia

25.5535, 23.0313, 24.5714

Trichromacy



Original Color

23.5701, 22.9716, 14.7470

Protanomaly

22.3155, 23.0884, 15.3369

Deuteranomaly

23.3758, 22.8715, 14.7379

Tritanomaly

24.7108, 22.8688, 20.5645

Monochromacy



Original Color

23.5701, 22.9716, 14.7470

Achromatopsia

21.9318, 23.0740, 25.1276

Achromatomaly

22.3573, 22.9840, 21.0273

CSS Examples

Text

The CSS property to change the color of the text to XYZ 23.5701, 22.9716, 14.7470 is called "color". The color property can be set on classes, ids or directly on the HTML element.

This example shows how text in the color `rgb(157, 126, 98)` looks like.

```
.text, #text, p{  
    color:rgb(157, 126, 98)  
}
```

If you want to add a text shadow in that color use the text-shadow property, you can generate a text shadow directly with our [CSS Text Shadow Generator](#).

Here you see how black text with a 4 pixel rgb(157, 126, 98) colored shadow looks like.

```
.shadow{ text-shadow: 4px 4px 2px rgb(157, 126, 98) }
```

Border

The CSS property to change the border of an element to XYZ 23.5701, 22.9716, 14.7470 is called "border". The border property can be set on classes, ids or directly on the HTML element.

This example shows the color as border, it can be applied via the CSS property "border" or "border-color".

```
.border, #border, table{ border:4px solid rgb(157, 126, 98) }
```


If only the border color should be changed use the property `border-color`.

```
.border{ border-color:rgb(157, 126, 98) }
```

If you want to add a box shadow in that color use:

Here you see how a box with a 4 pixel `rgb(157, 126, 98)` colored shadow looks like.

```
.boxshadow{ -moz-box-shadow:4px 4px 4px  
4px rgb(157, 126, 98); -webkit-box-  
shadow:4px 4px 4px 4px rgb(157, 126, 98);  
box-shadow:4px 4px 4px 4px rgb(157, 126,  
98) }
```

Background

The CSS property to change the background color of an element to XYZ 23.5701, 22.9716, 14.7470 is called "background". The background property can be set on classes, ids or directly on the HTML element.

```
.background, #background, body{  
background: rgb(157, 126, 98) }
```

If only the background color should be changed can be used:

```
.background{ background-color: rgb(157,  
126, 98) }
```

This example shows the color as background, it is applied via the CSS property "background".

To optimize and compress your CSS code, you can use our [online CSS compressor and optimizer](#) based on csstidy. If you want to create a linear or radial gradient as background or border, check our [CSS Gradient Generator](#).

Hey! You found this booklet interesting? Support Converting Colors with the new Membership Option!

The pro membership hides all ads, plus gives you double the colors in the color bucket, and more awesome pro features!

[Learn more, Memberships starting at \\$2.50/m!](#)

**Follow me
on Twitter!**

@ConvertingColor