

# Converting Colors

XYZ(23.6297, 22.0832, 11.0399)

Have a look what the booklet for  
XYZ(23.6297, 22.0832, 11.0399)  
contains.

<b>XYZ(23.6702, 22.1765, 11.0156)</b> .....	3
<b><i>Conversions</i></b> .....	4
<b><i>Details</i></b> .....	6
<b><i>Harmonies</i></b> .....	12
<b><i>Previews</i></b> .....	24
<b><i>Color Blindness Simulation</i></b> .....	28
<b><i>CSS Examples</i></b> .....	31

# Color

**XYZ(23.6702, 22.1765,  
11.0156)**

# Conversions

## Conversions Part 1

<b>Format</b>	<b>Color</b>
Hex	A47952
RGB	164, 121, 82
RGB Percent	64%, 47%, 32%
CMY	0.3569, 0.5255, 0.6784
CMYK	0.00, 0.26, 0.50, 0.36
HSL	29°, 33%, 48%
HSV	29°, 50%, 64%
XYZ	23.6702, 22.1765, 11.0156
YIQ	129.4110, 38.1470, -3.0130

# Conversions

## Conversions Part 2

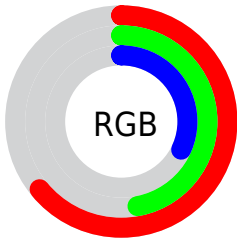
<b>Format</b>	<b>Color</b>
<a href="#">RYB</a>	<a href="#">164, 156, 82</a>
Decimal	<a href="#">10778962</a>
CIELab	<a href="#">54.21, 11.93, 27.87</a>
CIElCh	<a href="#">54, 30.312, 66.824</a>
Yxy	<a href="#">22.1765, 0.4163, 0.3900</a>
Android (android.graphics.Color)	<a href="#">4288969042 (0xFFA47952)</a>
YUV	<a href="#">129.4110, -23.3736, 30.3346</a>
Hunter-Lab	<a href="#">47.0919, 7.3100, 19.0954</a>

# Details

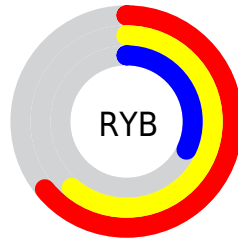
The XYZ color **23.6702, 22.1765, 11.0156** is a dark color, and the websafe version is hex **996633**. A complement of this color would be **17.5137, 19.1405, 37.8932**, and the grayscale version is **21.0812, 22.1790, 24.1530**.

A 20% lighter version of the original color is **48.9272, 46.9252, 28.3085**, and **9.0662, 8.0771, 2.7503** is the 20% darker color. If you saturate the color by 10%, you get **22.1204, 19.9592, 7.7795**, and if you desaturate by 10%, it is **25.4634, 24.6420, 15.0692**.

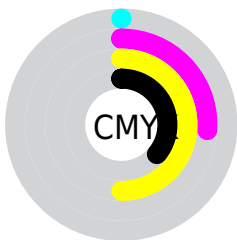
# Distribution



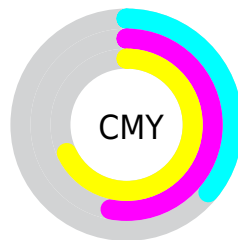
- Red (64%)
- Green (47%)
- Blue (32%)



- Red (64%)
- Yellow (61%)
- Blue (32%)



- Cyan (0%)
- Magenta (26%)
- Yellow (50%)
- Black (36%)



- Cyan (36%)
- Magenta (53%)
- Yellow (68%)

# Brightness & Saturation Gradients

These gradients show how the XYZ color 23.6702, 22.1765, 11.0156 changes by changing the brightness by 10 percent. The first figure shows a shift by +10% for each color and the second figure -10%.

Similar to the brightness gradients but the following saturation gradients show a change of the XYZ color 23.6702, 22.1765, 11.0156 by changing the saturation by 10% instead.



■ 23.6702, 22.1765,  
11.0156

■ 23.6702, 22.1765,  
11.0156

263.6204,  
263.4666, 208.5158

■ 15.2126, 13.9866,  
5.9630

■ 48.9501, 47.0375,  
28.3261

■ 9.0560, 8.1114,  
2.7542

■ 66.5030, 64.4775,  
41.4211

■ 4.8351, 4.1663,  
0.9705

■ 87.8185, 85.7697,  
58.0340

■ 2.1846, 1.7670,  
0.0000

■ 113.2618,  
111.2984, 78.5833

■ 0.7346, 0.4665,  
0.0000

■ 143.1982,  
141.4480, 103.4877

■ 0.0000, 0.0000,  
0.0000

177.9933,

176.6030, 133.1655

218.0122,  
217.1477, 168.0354

■ 23.6702, 22.1765,  
11.0156

■ 23.6702, 22.1765,  
11.0156

■ 22.1204, 19.9592,  
7.7795

■ 25.4634, 24.6420,  
15.0692

■ 20.7992, 17.9776,  
5.3019

■ 27.5105, 27.3610,  
19.9910

■ 19.6924, 16.2230,  
3.5178

■ 29.8231, 30.3426,  
25.8292

■ 18.7829, 14.6842,  
2.3505

■ 32.4118, 33.5945,  
32.6279

■ 18.0348, 13.3425,  
1.6249

■ 35.2862, 37.1239,  
40.4284

■ 18.0347, 13.3424,  
1.6248

■ 38.4558, 40.9379,  
49.2695

■ 41.9293, 45.0432,  
59.1882

■ 45.7152, 49.4462,  
70.2193

■ 49.8216, 54.1531,  
82.3962

# Harmonies

## Analogous

The Analogous color harmony consists of three colors that are next to each other on the color wheel.



26.5652, 22.1765, 14.8250



23.6702, 22.1765, 11.0156



20.3345, 22.1765, 10.2431

# Triad

The Triadic color harmony groups three colors that are evenly spaced from another and form a triangle on the color wheel.



23.6702, 22.1765, 11.0156



15.3942, 22.1765, 26.3664



25.1065, 22.1765, 41.7705

# Complementary

The Complementary color scheme is a pair of colors which are on the opposite of each other on the color wheel.



23.6702, 22.1765, 11.0156



17.5137, 19.1405, 37.8932

# Split Complementary

Split-complementary colors differ from the complementary color scheme. The scheme consists of three colors, the original color and two neighbors of the complement color.



21.8396, 22.1765, 47.0050



23.6702, 22.1765, 11.0156



16.4039, 22.1765, 36.7310

# Square

The Square scheme is like the rectangle color scheme, but the four colors are evenly spaced on the color wheel.



23.6702, 22.1765, 11.0156



15.7754, 22.1765, 17.6883



18.6825, 22.1765, 44.9538



27.4529, 22.1765, 32.0115



# Rectangle

The Rectangle color scheme consists of four colors that form a rectangle on the color wheel.



23.6702, 22.1765, 11.0156



18.3474, 22.1765, 11.3073



18.6825, 22.1765, 44.9538



24.0672, 22.1765, 44.2194

# Sweetspot

The Sweet Spot groups the original color and five complimentary colors.



23.6707, 22.1776, 11.0160



56.2872, 57.7995, 52.4837



22.0759, 15.4268, 21.4628



12.1035, 12.3815, 10.9459



78.6606, 82.7571, 90.1225



14.0027, 14.7319, 16.0430



# Same Dimension

The Same Dimension uses a secret algorithm to generate beautiful new colors.



23.6707, 22.1776, 11.0160



39.8613, 35.8020, 13.5462



29.6243, 34.0846, 13.0005



7.3387, 7.6157, 7.4633



13.8754, 10.3247, 1.2616



0.3388, 0.3115, 0.0423



# Inverse Universe

The Inverse Universe completely reimagines the original color for something new.



17.5137, 19.1405, 37.8932



27.3739, 29.6333, 68.0294



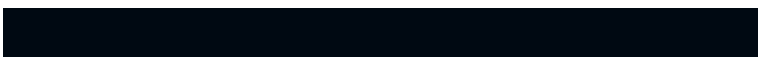
13.4082, 10.9295, 36.5247



6.9934, 7.4457, 8.9716



7.7370, 7.2534, 27.9220

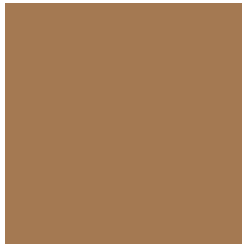


0.2095, 0.2464, 0.6024



# Previews

## White Background



This preview shows how the XYZ color 23.6702, 22.1765, 11.0156 looks on a white background.

## Color Contrast Check

Large Text (above 18pt) WCAG AA ✓ Pass

Any Text WCAG AA × Fail

Large Text (above 18pt) WCAG AAA × Fail

Any Text WCAG AAA × Fail



# Black Background



This preview shows how the XYZ color 23.6702, 22.1765, 11.0156 looks on a black background.

## Color Contrast Check

Large Text (above 18pt) WCAG AA ✓ Pass

Any Text WCAG AA ✓ Pass

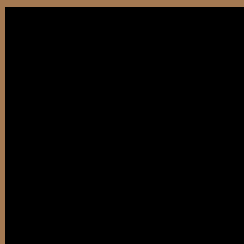
Large Text (above 18pt) WCAG AAA ✓ Pass

Any Text WCAG AAA × Fail

If you want to check with other color combinations, try the [Color Contrast Checker](#).

**XYZ 23.6702, 22.1765, 11.0156**

## **Background**



This preview shows how black text looks on a background with the XYZ color 23.6702, 22.1765, 11.0156.



This preview shows how white text looks on a background with the XYZ color 23.6702, 22.1765,



# Color Blindness Simulation

Color vision deficiency is a very complex topic, and I could not describe the different causes any better than Wikipedia does, so if you want to learn more, you should check out their [article about color blindness](#).

## Dichromacy



### Original Color

23.6702, 22.1765, 11.0156

### Protanopia

20.6068, 22.2839, 11.8094

### Deuteranopia

22.5975, 22.1775, 10.8742



## Tritanopia

26.0319, 22.2708, 21.9955

# Trichromacy



## Original Color

23.6702, 22.1765, 11.0156

## Protanomaly

21.5840, 22.2084, 11.5366

## Deuteranomaly

23.0654, 22.2336, 10.8604

## Tritanomaly

25.1751, 22.2765, 17.4409

# Monochromacy



## Original Color

23.6702, 22.1765, 11.0156

## Achromatopsia

20.8660, 21.9526, 23.9064

## Achromatomaly

21.5408, 21.8423, 18.4099

# CSS Examples

## Text

The CSS property to change the color of the text to XYZ 23.6702, 22.1765, 11.0156 is called "color". The color property can be set on classes, ids or directly on the HTML element.

This example shows how text in the color `rgb(164, 121, 82)` looks like.

```
.text, #text, p{  
    color:rgb(164, 121, 82)  
}
```

If you want to add a text shadow in that color use the text-shadow property, you can generate a text shadow directly with our [CSS Text Shadow Generator](#).

Here you see how black text with a 4 pixel rgb(164, 121, 82) colored shadow looks like.

```
.shadow{ text-shadow: 4px 4px 2px rgb(164, 121, 82) }
```

## Border

The CSS property to change the border of an element to XYZ 23.6702, 22.1765, 11.0156 is called "border". The border property can be set on classes, ids or directly on the HTML element.

This example shows the color as border, it can be applied via the CSS property "border" or "border-color".

```
.border, #border, table{ border:4px solid rgb(164, 121, 82) }
```



If only the border color should be changed use the property border-color.

```
.border{ border-color:rgb(164, 121, 82) }
```

If you want to add a box shadow in that color use:

Here you see how a box with a 4 pixel rgb(164, 121, 82) colored shadow looks like.

```
.boxshadow{ -moz-box-shadow:4px 4px 4px  
4px rgb(164, 121, 82); -webkit-box-  
shadow:4px 4px 4px 4px rgb(164, 121, 82);  
box-shadow:4px 4px 4px 4px rgb(164, 121,  
82) }
```

# Background

The CSS property to change the background color of an element to XYZ 23.6702, 22.1765, 11.0156 is called "background". The background property can be set on classes, ids or directly on the HTML element.

```
.background, #background, body{  
background: rgb(164, 121, 82) }
```

If only the background color should be changed can be used:

```
.background{ background-color: rgb(164,  
121, 82) }
```

This example shows the color as background, it is applied via the CSS property "background".

To optimize and compress your CSS code, you can use our [online CSS compressor and optimizer](#) based on csstidy. If you want to create a linear or radial gradient as background or border, check our [CSS Gradient Generator](#).

Hey! You found this booklet interesting? Support Converting Colors with the new Membership Option!

The pro membership hides all ads, plus gives you double the colors in the color bucket, and more awesome pro features!

**[Learn more, Memberships starting at \\$2.50/m!](#)**

**Follow me  
on Twitter!**

@ConvertingColor