

Converting Colors

XYZ(23.7108, 16.7484, 23.3940)

Have a look what the booklet for
XYZ(23.7108, 16.7484, 23.3940)
contains.

XYZ(23.7867, 16.7293, 23.4481)	3
<i>Conversions</i>	4
<i>Details</i>	6
<i>Harmonies</i>	12
<i>Previews</i>	24
<i>Color Blindness Simulation</i>	28
<i>CSS Examples</i>	31

Color

**XYZ(23.7867, 16.7293,
23.4481)**

Conversions

Conversions Part 1

Format	Color
Hex	A95683
RGB	169, 86, 131
RGB Percent	66%, 34%, 51%
CMY	0.3373, 0.6627, 0.4863
CMYK	0.00, 0.49, 0.22, 0.34
HSL	327°, 33%, 50%
HSV	327°, 49%, 66%
XYZ	23.7867, 16.7293, 23.4481
YIQ	115.9470, 35.0230, 31.5910

Conversions

Conversions Part 2

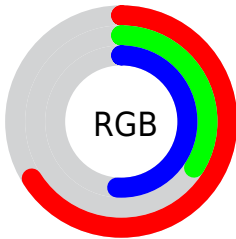
Format	Color
R_{YB}	169, 86, 131
Decimal	11097731
CIE _{Lab}	47.92, 39.59, -9.68
CIE _{LCh}	48, 40.751, 346.262
Yxy	16.7293, 0.3719, 0.2615
Android (android.graphics.Color)	4289287811 (0xFFA95683)
YUV	115.9470, 7.4211, 46.5275
Hunter-Lab	40.9015, 32.2311, -5.3589

Details

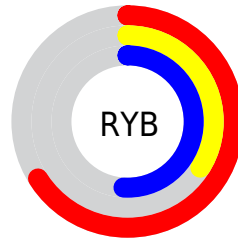
The XYZ color **23.7867, 16.7293, 23.4481** is a dark color, and the websafe version is hex **CC6699**. A complement of this color would be **21.6646, 31.8101, 24.0684**, and the grayscale version is **16.5552, 17.4174, 18.9675**.

A 20% lighter version of the original color is **49.1042, 37.8064, 50.0567**, and **9.0635, 5.3887, 8.5451** is the 20% darker color. If you saturate the color by 10%, you get **22.0885, 14.1409, 20.3905**, and if you desaturate by 10%, it is **25.8441, 19.9731, 26.8190**.

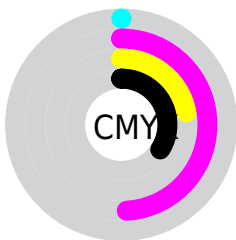
Distribution



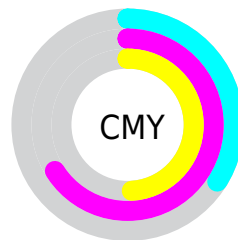
- Red (66%)
- Green (34%)
- Blue (51%)



- Red (66%)
- Yellow (34%)
- Blue (51%)



- Cyan (0%)
- Magenta (49%)
- Yellow (22%)
- Black (34%)



- Cyan (34%)
- Magenta (66%)
- Yellow (49%)

Brightness & Saturation Gradients

These gradients show how the XYZ color 23.7867, 16.7293, 23.4481 changes by changing the brightness by 10 percent. The first figure shows a shift by +10% for each color and the second figure -10%.

Similar to the brightness gradients but the following saturation gradients show a change of the XYZ color 23.7867, 16.7293, 23.4481 by changing the saturation by 10% instead.

■ 23.7867, 16.7293,
23.4481

■ 23.7867, 16.7293,
23.4481

264.2009,
233.6076, 283.2144

■ 15.2993, 10.0417,
14.7163

■ 49.1391, 37.8598,
50.0606

■ 9.1174, 5.4266,
8.4761

■ 66.7349, 53.0714,
68.7783

■ 4.8756, 2.4997,
4.3090

■ 88.0975, 71.8931,
91.6618

■ 2.2084, 0.8765,
1.7963

■ 113.5923, 94.7094,
119.1296

■ 0.7472, 0.0000,
0.4255

■ 143.5847,
121.9046, 151.6002

■ 0.0000, 0.0000,
0.0000

178.4401,

153.8631, 189.4922

218.5236,
190.9693, 233.2241

■ 23.7867, 16.7293,
23.4481

■ 23.7867, 16.7293,
23.4481

■ 22.0885, 14.1409,
20.3905

■ 25.8441, 19.9731,
26.8190

■ 20.7242, 12.1593,
17.6332

■ 28.2807, 23.9113,
30.5135

■ 19.6678, 10.7333,
15.1632

■ 31.1166, 28.5828,
34.5423

■ 18.8878, 9.8020,
12.9656

■ 34.3700, 34.0230,
38.9154

■ 18.3240, 9.2459,
11.0157

■ 38.0582, 40.2647,
43.6423

■ 18.2776, 9.2012,
10.8517

■ 42.1971, 47.3392,
48.7318

■ 46.8021, 55.2757,
54.1927

■ 51.8876, 64.1022,
60.0333

■ 57.4677, 73.8455,
66.2614

Harmonies

Analogous

The Analogous color harmony consists of three colors that are next to each other on the color wheel.



21.5629, 16.7293, 36.0622



23.7867, 16.7293, 23.4481



23.6816, 16.7293, 13.1224

Triad

The Triadic color harmony groups three colors that are evenly spaced from another and form a triangle on the color wheel.



23.7867, 16.7293, 23.4481



14.0056, 16.7293, 4.8880



11.5044, 16.7293, 37.0636

Complementary

The Complementary color scheme is a pair of colors which are on the opposite of each other on the color wheel.



23.7867, 16.7293, 23.4481



21.6646, 31.8101, 24.0684

Split Complementary

Split-complementary colors differ from the complementary color scheme. The scheme consists of three colors, the original color and two neighbors of the complement color.



10.0434, 16.7293, 24.4802



23.7867, 16.7293, 23.4481



11.3282, 16.7293, 7.5120

Square

The Square scheme is like the rectangle color scheme, but the four colors are evenly spaced on the color wheel.



23.7867, 16.7293, 23.4481



17.6359, 16.7293, 4.7928



9.9843, 16.7293, 13.8255



14.2832, 16.7293, 45.7401

Rectangle

The Rectangle color scheme consists of four colors that form a rectangle on the color wheel.



23.7867, 16.7293, 23.4481



22.2955, 16.7293, 8.6867



9.9843, 16.7293, 13.8255



10.8630, 16.7293, 32.9725

Sweetspot

The Sweet Spot groups the original color and five complimentary colors.



23.7872, 16.7301, 23.4484



57.8759, 54.7665, 64.7977



18.7086, 13.7580, 39.2058



12.3658, 11.5223, 13.7851



80.6108, 84.8088, 92.3568



14.7206, 15.4872, 16.8656

Same Dimension

The Same Dimension uses a secret algorithm to generate beautiful new colors.



23.7872, 16.7301, 23.4484



39.3030, 24.9445, 36.0283



21.5425, 15.8322, 11.6279



7.6948, 7.6078, 8.7100



13.6494, 6.8685, 8.2313



0.3574, 0.1773, 0.3338

Inverse Universe

The Inverse Universe completely reimagines the original color for something new.



23.7872, 16.7301, 23.4484



39.3030, 24.9445, 36.0283



24.8042, 33.0659, 40.6011



7.6948, 7.6078, 8.7100



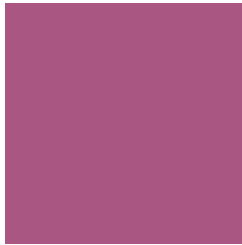
13.6494, 6.8685, 8.2313



0.3574, 0.1773, 0.3338

Previews

White Background



This preview shows how the XYZ color 23.7867, 16.7293, 23.4481 looks on a white background.

Color Contrast Check

Large Text (above 18pt) WCAG AA ✓ Pass

Any Text WCAG AA ✓ Pass

Large Text (above 18pt) WCAG AAA ✓ Pass

Any Text WCAG AAA × Fail

Black Background



This preview shows how the XYZ color 23.7867, 16.7293, 23.4481 looks on a black background.

Color Contrast Check

Large Text (above 18pt) WCAG AA ✓ Pass

Any Text WCAG AA × Fail

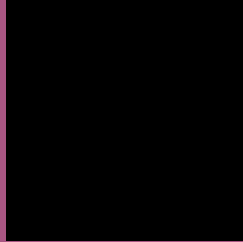
Large Text (above 18pt) WCAG AAA × Fail

Any Text WCAG AAA × Fail

If you want to check with other color combinations, try the [Color Contrast Checker](#).

XYZ 23.7867, 16.7293, 23.4481

Background



This preview shows how black text looks on a background with the XYZ color 23.7867, 16.7293, 23.4481.



This preview shows how white text looks on a background with the XYZ color 23.7867, 16.7293,

Color Blindness Simulation

Color vision deficiency is a very complex topic, and I could not describe the different causes any better than Wikipedia does, so if you want to learn more, you should check out their [article about color blindness](#).

Dichromacy



Original Color

23.7867, 16.7293, 23.4481

Protanopia

17.0389, 16.9232, 30.8022

Deuteranopia

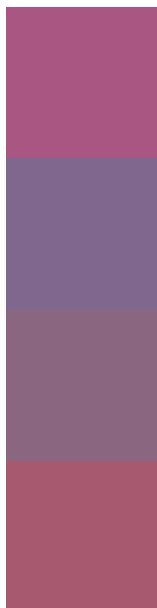
17.2609, 16.8943, 22.4298



Tritanopia

21.8052, 16.6621, 13.8712

Trichromacy



Original Color

23.7867, 16.7293, 23.4481

Protanomaly

18.6348, 16.2427, 27.7442

Deuteranomaly

19.1289, 16.4645, 22.5918

Tritanomaly

22.4618, 16.6755, 17.0738

Monochromacy



Original Color

23.7867, 16.7293, 23.4481

Achromatopsia

16.6002, 17.4647, 19.0191

Achromatomaly

18.4944, 16.6345, 20.3252

CSS Examples

Text

The CSS property to change the color of the text to XYZ 23.7867, 16.7293, 23.4481 is called "color". The color property can be set on classes, ids or directly on the HTML element.

This example shows how text in the color `rgb(169, 86, 131)` looks like.

```
.text, #text, p{  
    color:rgb(169, 86, 131)  
}
```

If you want to add a text shadow in that color use the text-shadow property, you can generate a text shadow directly with our [CSS Text Shadow Generator](#).

Here you see how black text with a 4 pixel rgb(169, 86, 131) colored shadow looks like.

```
.shadow{ text-shadow: 4px 4px 2px rgb(169, 86, 131) }
```

Border

The CSS property to change the border of an element to XYZ 23.7867, 16.7293, 23.4481 is called "border". The border property can be set on classes, ids or directly on the HTML element.

This example shows the color as border, it can be applied via the CSS property "border" or "border-color".

```
.border, #border, table{ border:4px solid rgb(169, 86, 131) }
```


If only the border color should be changed use the property `border-color`.

```
.border{ border-color:rgb(169, 86, 131) }
```

If you want to add a box shadow in that color use:

Here you see how a box with a 4 pixel `rgb(169, 86, 131)` colored shadow looks like.

```
.boxshadow{ -moz-box-shadow:4px 4px 4px 4px rgb(169, 86, 131); -webkit-box-shadow:4px 4px 4px 4px rgb(169, 86, 131); box-shadow:4px 4px 4px 4px rgb(169, 86, 131) }
```

Background

The CSS property to change the background color of an element to XYZ 23.7867, 16.7293, 23.4481 is called "background". The background property can be set on classes, ids or directly on the HTML element.

```
.background, #background, body{  
background: rgb(169, 86, 131) }
```

If only the background color should be changed can be used:

```
.background{ background-color: rgb(169, 86,  
131) }
```

This example shows the color as background, it is applied via the CSS property "background".

To optimize and compress your CSS code, you can use our [online CSS compressor and optimizer](#) based on csstidy. If you want to create a linear or radial gradient as background or border, check our [CSS Gradient Generator](#).

Hey! You found this booklet interesting? Support Converting Colors with the new Membership Option!

The pro membership hides all ads, plus gives you double the colors in the color bucket, and more awesome pro features!

[Learn more, Memberships starting at \\$2.50/m!](#)

**Follow me
on Twitter!**

@ConvertingColor