

Converting Colors

XYZ(24.1348, 23.0023, 13.5370)

Have a look what the booklet for
XYZ(24.1348, 23.0023, 13.5370)
contains.

XYZ(24.0837, 22.8870, 13.5042)	3
<i>Conversions</i>	4
<i>Details</i>	6
<i>Harmonies</i>	12
<i>Previews</i>	24
<i>Color Blindness Simulation</i>	28
<i>CSS Examples</i>	31

Color

**XYZ(24.0837, 22.8870,
13.5042)**

Conversions

Conversions Part 1

Format	Color
Hex	A27C5D
RGB	162, 124, 93
RGB Percent	64%, 49%, 36%
CMY	0.3647, 0.5137, 0.6353
CMYK	0.00, 0.23, 0.43, 0.36
HSL	27°, 27%, 50%
HSV	27°, 43%, 64%
XYZ	24.0837, 22.8870, 13.5042
YIQ	131.8280, 32.5990, -1.5850

Conversions

Conversions Part 2

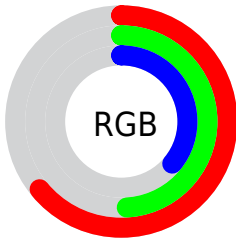
Format	Color
R_{YB}	162, 149, 93
Decimal	10648669
CIE Lab	54.96, 10.55, 22.60
CIE LCh	55, 24.941, 64.969
Yxy	22.8870, 0.3982, 0.3785
Android (android.graphics.Color)	4288838749 (0xFFA27C5D)
YUV	131.8280, -19.1422, 26.4608
Hunter-Lab	47.8404, 6.1395, 16.7521

Details

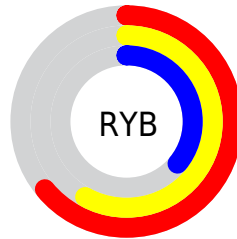
The XYZ color **24.0837, 22.8870, 13.5042** is a dark color, and the websafe version is hex **996633**. A complement of this color would be **19.1517, 21.1675, 37.2586**, and the grayscale version is **21.9292, 23.0712, 25.1245**.

A 20% lighter version of the original color is **49.6696, 48.3633, 33.1027**, and **9.1936, 8.4176, 3.7250** is the 20% darker color. If you saturate the color by 10%, you get **22.3730, 20.4949, 9.7612**, and if you desaturate by 10%, it is **26.0487, 25.5444, 18.0825**.

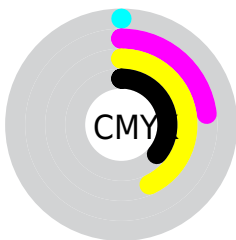
Distribution



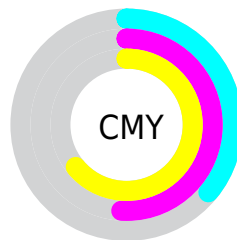
- Red (64%)
- Green (49%)
- Blue (36%)



- Red (64%)
- Yellow (58%)
- Blue (36%)



- Cyan (0%)
- Magenta (23%)
- Yellow (43%)
- Black (36%)



- Cyan (36%)
- Magenta (51%)
- Yellow (64%)

Brightness & Saturation Gradients

These gradients show how the XYZ color 24.0837, 22.8870, 13.5042 changes by changing the brightness by 10 percent. The first figure shows a shift by +10% for each color and the second figure -10%.

Similar to the brightness gradients but the following saturation gradients show a change of the XYZ color 24.0837, 22.8870, 13.5042 by changing the saturation by 10% instead.

■ 24.0837, 22.8870,
13.5042

■ 24.0837, 22.8870,
13.5042

265.6760,
267.1441, 225.4444

■ 15.5208, 14.5101,
7.6419

■ 49.6204, 48.2077,
32.9110

■ 9.2744, 8.4763,
3.7822

■ 67.3250, 65.9203,
47.2926

■ 4.9791, 4.4012,
1.5066

■ 88.8074, 87.5136,
65.3510

■ 2.2697, 1.9004,
0.2229

■ 114.4332,
113.3720, 87.5048

■ 0.7791, 0.5486,
0.0000

144.5675,
143.8798, 114.1725

■ 0.0000, 0.0000,
0.0000

179.5759,

179.4215, 145.7726

219.8236,
220.3815, 182.7237

■ 24.0837, 22.8870,
13.5042

■ 24.0837, 22.8870,
13.5042

■ 22.3730, 20.4949,
9.7612

■ 26.0487, 25.5444,
18.0825

■ 20.9027, 18.3556,
6.8001

■ 28.2777, 28.4725,
23.5420

■ 19.6595, 16.4604,
4.5636

■ 30.7819, 31.6806,
29.9270

■ 18.6284, 14.7984,
2.9858

■ 33.5714, 35.1766,
37.2784

■ 17.7916, 13.3578,
1.9885

■ 36.6556, 38.9679,
45.6345

■ 17.2691, 12.4191,
1.4869

■ 40.0434, 43.0616,
55.0317

■ 43.7435, 47.4649,
65.5043

■ 47.7641, 52.1842,
77.0854

■ 52.1131, 57.2261,
89.8063

Harmonies

Analogous

The Analogous color harmony consists of three colors that are next to each other on the color wheel.



26.4123, 22.8870, 17.1657



24.0837, 22.8870, 13.5042



21.2957, 22.8870, 12.6112

Triad

The Triadic color harmony groups three colors that are evenly spaced from another and form a triangle on the color wheel.



24.0837, 22.8870, 13.5042



16.8707, 22.8870, 26.2636



24.9483, 22.8870, 39.6124

Complementary

The Complementary color scheme is a pair of colors which are on the opposite of each other on the color wheel.



24.0837, 22.8870, 13.5042



19.1517, 21.1675, 37.2586

Split Complementary

Split-complementary colors differ from the complementary color scheme. The scheme consists of three colors, the original color and two neighbors of the complement color.



22.2176, 22.8870, 43.3966



24.0837, 22.8870, 13.5042



17.6773, 22.8870, 34.7157

Square

The Square scheme is like the rectangle color scheme, but the four colors are evenly spaced on the color wheel.



24.0837, 22.8870, 13.5042



17.2790, 22.8870, 19.0116



19.5785, 22.8870, 41.4378



26.9404, 22.8870, 31.9410

Rectangle

The Rectangle color scheme consists of four colors that form a rectangle on the color wheel.



24.0837, 22.8870, 13.5042



19.5834, 22.8870, 13.4995



19.5785, 22.8870, 41.4378



24.0781, 22.8870, 41.4476

Sweetspot

The Sweet Spot groups the original color and five complimentary colors.



24.0843, 22.8881, 13.5047



55.5691, 57.1166, 53.5177



22.9864, 17.1790, 23.9702



12.2557, 12.5421, 11.4398



78.6606, 82.7571, 90.1225



14.0027, 14.7319, 16.0430

Same Dimension

The Same Dimension uses a secret algorithm to generate beautiful new colors.



24.0843, 22.8881, 13.5047



40.7968, 37.4634, 18.1001



29.0008, 32.7212, 15.1435



7.3236, 7.5855, 7.4582



13.6470, 9.8679, 1.1854



0.3337, 0.3013, 0.0406

Inverse Universe

The Inverse Universe completely reimagines the original color for something new.



19.1517, 21.1675, 37.2586



30.6383, 33.9086, 66.9863



15.3663, 13.5967, 35.9968



7.0086, 7.4762, 8.9767



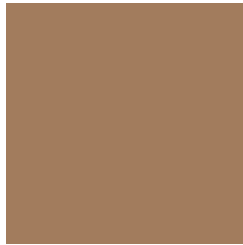
8.0094, 7.7983, 28.0129



0.2146, 0.2566, 0.6041

Previews

White Background



This preview shows how the XYZ color 24.0837, 22.8870, 13.5042 looks on a white background.

Color Contrast Check

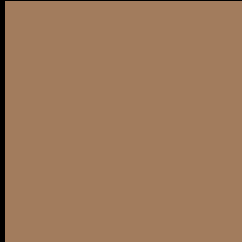
Large Text (above 18pt) WCAG AA ✓ Pass

Any Text WCAG AA × Fail

Large Text (above 18pt) WCAG AAA × Fail

Any Text WCAG AAA × Fail

Black Background



This preview shows how the XYZ color 24.0837, 22.8870, 13.5042 looks on a black background.

Color Contrast Check

Large Text (above 18pt) WCAG AA ✓ Pass

Any Text WCAG AA ✓ Pass

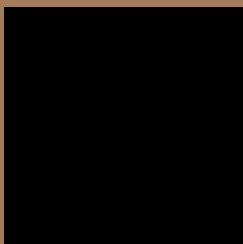
Large Text (above 18pt) WCAG AAA ✓ Pass

Any Text WCAG AAA × Fail

If you want to check with other color combinations, try the [Color Contrast Checker](#).

XYZ 24.0837, 22.8870, 13.5042

Background



This preview shows how black text looks on a background with the XYZ color 24.0837, 22.8870, 13.5042.



This preview shows how white text looks on a background with the XYZ color 24.0837, 22.8870,

Color Blindness Simulation

Color vision deficiency is a very complex topic, and I could not describe the different causes any better than Wikipedia does, so if you want to learn more, you should check out their [article about color blindness](#).

Dichromacy



Original Color

24.0837, 22.8870, 13.5042

Protanopia

21.5179, 23.0978, 14.3905

Deuteranopia

23.3413, 22.8801, 13.5420



Tritanopia

26.0102, 22.7515, 23.4427

Trichromacy



Original Color

24.0837, 22.8870, 13.5042

Protanomaly

22.3102, 22.9163, 14.0739

Deuteranomaly

23.6075, 22.8285, 13.5180

Tritanomaly

25.2417, 22.8051, 19.2911

Monochromacy



Original Color

24.0837, 22.8870, 13.5042

Achromatopsia

21.9318, 23.0740, 25.1276

Achromatomaly

22.4480, 22.8482, 20.3665

CSS Examples

Text

The CSS property to change the color of the text to XYZ 24.0837, 22.8870, 13.5042 is called "color". The color property can be set on classes, ids or directly on the HTML element.

This example shows how text in the color `rgb(162, 124, 93)` looks like.

```
.text, #text, p{  
    color:rgb(162, 124, 93)  
}
```

If you want to add a text shadow in that color use the text-shadow property, you can generate a text shadow directly with our [CSS Text Shadow Generator](#).

Here you see how black text with a 4 pixel rgb(162, 124, 93) colored shadow looks like.

```
.shadow{ text-shadow: 4px 4px 2px rgb(162, 124, 93) }
```

Border

The CSS property to change the border of an element to XYZ 24.0837, 22.8870, 13.5042 is called "border". The border property can be set on classes, ids or directly on the HTML element.

This example shows the color as border, it can be applied via the CSS property "border" or "border-color".

```
.border, #border, table{ border:4px solid rgb(162, 124, 93) }
```


If only the border color should be changed use the property `border-color`.

```
.border{ border-color:rgb(162, 124, 93) }
```

If you want to add a box shadow in that color use:

Here you see how a box with a 4 pixel `rgb(162, 124, 93)` colored shadow looks like.

```
.boxshadow{ -moz-box-shadow:4px 4px 4px  
4px rgb(162, 124, 93); -webkit-box-  
shadow:4px 4px 4px 4px rgb(162, 124, 93);  
box-shadow:4px 4px 4px 4px rgb(162, 124,  
93) }
```

Background

The CSS property to change the background color of an element to XYZ 24.0837, 22.8870, 13.5042 is called "background". The background property can be set on classes, ids or directly on the HTML element.

```
.background, #background, body{  
background: rgb(162, 124, 93) }
```

If only the background color should be changed can be used:

```
.background{ background-color: rgb(162,  
124, 93) }
```

This example shows the color as background, it is applied via the CSS property "background".

To optimize and compress your CSS code, you can use our [online CSS compressor and optimizer](#) based on csstidy. If you want to create a linear or radial gradient as background or border, check our [CSS Gradient Generator](#).

Hey! You found this booklet interesting? Support Converting Colors with the new Membership Option!

The pro membership hides all ads, plus gives you double the colors in the color bucket, and more awesome pro features!

[Learn more, Memberships starting at \\$2.50/m!](#)

**Follow me
on Twitter!**

@ConvertingColor