

Converting Colors

XYZ(24.7696, 23.2087, 14.9786)

Have a look what the booklet for
XYZ(24.7696, 23.2087, 14.9786)
contains.

XYZ(24.7696, 23.2087, 14.9786)	3
<i>Conversions</i>	4
<i>Details</i>	6
<i>Harmonies</i>	12
<i>Previews</i>	24
<i>Color Blindness Simulation</i>	28
<i>CSS Examples</i>	31

Color

**XYZ(24.7696, 23.2087,
14.9786)**

Conversions

Conversions Part 1

Format	Color
Hex	A47C63
RGB	164, 124, 99
RGB Percent	64%, 49%, 39%
CMY	0.3569, 0.5137, 0.6118
CMYK	0.00, 0.24, 0.40, 0.36
HSL	23°, 26%, 52%
HSV	23°, 40%, 64%
XYZ	24.7696, 23.2087, 14.9786
YIQ	133.1100, 31.8650, 0.7050

Conversions

Conversions Part 2

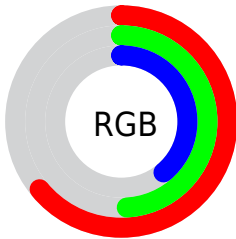
Format	Color
RYB	164, 140, 99
Decimal	10779747
CIELab	55.29, 12.10, 19.66
CIElCh	55, 23.089, 58.390
Yxy	23.2087, 0.3934, 0.3686
Android (android.graphics.Color)	4288969827 (0xFFA47C63)
YUV	133.1100, -16.8162, 27.0905
Hunter-Lab	48.1754, 7.4696, 15.2885

Details

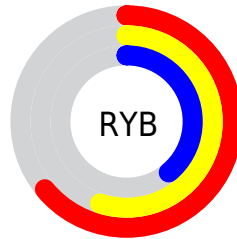
The XYZ color **24.7696, 23.2087, 14.9786** is a dark color, and the websafe version is hex **996666**. A complement of this color would be **21.0786, 23.7972, 38.6042**, and the grayscale version is **22.3861, 23.5519, 25.6481**.

A 20% lighter version of the original color is **50.7424, 48.8619, 35.6110**, and **9.5663, 8.5951, 4.4036** is the 20% darker color. If you saturate the color by 10%, you get **22.8633, 20.5259, 10.8600**, and if you desaturate by 10%, it is **26.9658, 26.2162, 19.9799**.

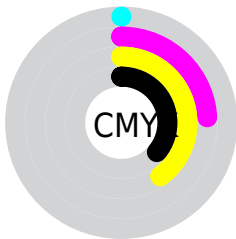
Distribution



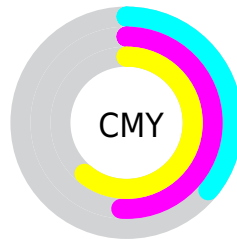
- Red (64%)
- Green (49%)
- Blue (39%)



- Red (64%)
- Yellow (55%)
- Blue (39%)



- Cyan (0%)
- Magenta (24%)
- Yellow (40%)
- Black (36%)



- Cyan (36%)
- Magenta (51%)
- Yellow (61%)

Brightness & Saturation Gradients

These gradients show how the XYZ color 24.7696, 23.2087, 14.9786 changes by changing the brightness by 10 percent. The first figure shows a shift by +10% for each color and the second figure -10%.

Similar to the brightness gradients but the following saturation gradients show a change of the XYZ color 24.7696, 23.2087, 14.9786 by changing the saturation by 10% instead.

■ 24.7696, 23.2087,
14.9786

■ 24.7696, 23.2087,
14.9786

269.0574,
268.7951, 234.8730

■ 16.0333, 14.7477,
8.6579

■ 50.7288, 48.7358,
35.5574

■ 9.6387, 8.6425,
4.4250

■ 68.6824, 66.5706,
50.6526

■ 5.2205, 4.5087,
1.8613

■ 90.4391, 88.2989,
69.5097

■ 2.4133, 1.9620,
0.4679

■ 116.3644,
114.3050, 92.5473

■ 0.8517, 0.5853,
0.0000

146.8235,
144.9732, 120.1839

■ 0.0000, 0.0000,
0.0000

182.1818,

180.6881, 152.8380

222.8046,
221.8339, 190.9282

■ 24.7696, 23.2087,
14.9786

■ 24.7696, 23.2087,
14.9786

■ 22.8633, 20.5259,
10.8600

■ 26.9658, 26.2162,
19.9799

■ 21.2315, 18.1530,
7.5703

■ 29.4627, 29.5562,
25.9106

■ 19.8600, 16.0787,
5.0519

■ 32.2726, 33.2402,
32.8155

■ 18.7324, 14.2894,
3.2393

■ 35.4068, 37.2780,
40.7364

■ 17.8297, 12.7704,
2.0556

■ 38.8756, 41.6792,
49.7125

■ 17.1160, 11.4996,
1.3348

■ 42.6893, 46.4530,
59.7809

■ 17.0921, 11.4571,
1.3106

■ 46.8573, 51.6080,
70.9768

■ 51.3889, 57.1528,
83.3340

■ 56.2929, 63.0956,
96.8848

Harmonies

Analogous

The Analogous color harmony consists of three colors that are next to each other on the color wheel.



26.7295, 23.2087, 19.0857



24.7696, 23.2087, 14.9786



22.1992, 23.2087, 13.5403

Triad

The Triadic color harmony groups three colors that are evenly spaced from another and form a triangle on the color wheel.



24.7696, 23.2087, 14.9786



17.4524, 23.2087, 24.8722



24.5090, 23.2087, 39.9838

Complementary

The Complementary color scheme is a pair of colors which are on the opposite of each other on the color wheel.



24.7696, 23.2087, 14.9786



21.0786, 23.7972, 38.6042

Split Complementary

Split-complementary colors differ from the complementary color scheme. The scheme consists of three colors, the original color and two neighbors of the complement color.



21.9197, 23.2087, 42.3470



24.7696, 23.2087, 14.9786



17.9673, 23.2087, 32.6646

Square

The Square scheme is like the rectangle color scheme, but the four colors are evenly spaced on the color wheel.



24.7696, 23.2087, 14.9786



18.0894, 23.2087, 18.5166



19.5541, 23.2087, 39.4429



26.5709, 23.2087, 33.4940

Rectangle

The Rectangle color scheme consists of four colors that form a rectangle on the color wheel.



24.7696, 23.2087, 14.9786



20.5273, 23.2087, 14.0219



19.5541, 23.2087, 39.4429



23.6655, 23.2087, 41.3370

Sweetspot

The Sweet Spot groups the original color and five complimentary colors.



24.7702, 23.2098, 14.9791



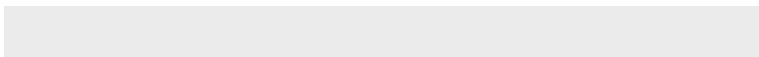
57.2026, 58.5423, 56.1427



24.4380, 18.6829, 26.7763



12.3677, 12.6183, 11.9333



78.6606, 82.7571, 90.1225



14.0027, 14.7319, 16.0430

Same Dimension

The Same Dimension uses a secret algorithm to generate beautiful new colors.



24.7702, 23.2098, 14.9791



41.7365, 37.5947, 20.2068



29.5205, 32.7103, 16.5625



7.2867, 7.5119, 7.4460



13.1488, 8.8715, 1.0194



0.3212, 0.2762, 0.0364

Inverse Universe

The Inverse Universe completely reimagines the original color for something new.



21.0786, 23.7972, 38.6042



34.0289, 38.7932, 69.4467



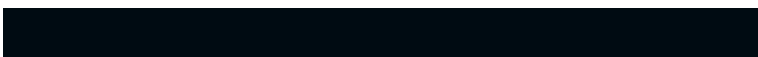
17.0610, 15.7619, 37.2650



7.0462, 7.5514, 8.9893



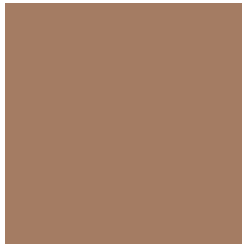
8.7467, 9.2729, 28.2586



0.2274, 0.2821, 0.6083

Previews

White Background



This preview shows how the XYZ color 24.7696, 23.2087, 14.9786 looks on a white background.

Color Contrast Check

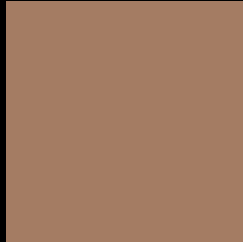
Large Text (above 18pt) WCAG AA ✓ Pass

Any Text WCAG AA × Fail

Large Text (above 18pt) WCAG AAA × Fail

Any Text WCAG AAA × Fail

Black Background



This preview shows how the XYZ color 24.7696, 23.2087, 14.9786 looks on a black background.

Color Contrast Check

Large Text (above 18pt) WCAG AA ✓ Pass

Any Text WCAG AA ✓ Pass

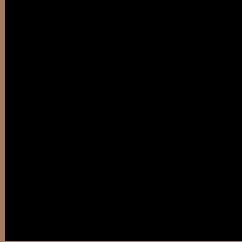
Large Text (above 18pt) WCAG AAA ✓ Pass

Any Text WCAG AAA × Fail

If you want to check with other color combinations, try the [Color Contrast Checker](#).

XYZ 24.7696, 23.2087, 14.9786

Background



This preview shows how black text looks on a background with the XYZ color 24.7696, 23.2087, 14.9786.



This preview shows how white text looks on a background with the XYZ color 24.7696, 23.2087,

Color Blindness Simulation

Color vision deficiency is a very complex topic, and I could not describe the different causes any better than Wikipedia does, so if you want to learn more, you should check out their [article about color blindness](#).

Dichromacy



Original Color

24.7696, 23.2087, 14.9786

Protanopia

21.6840, 23.1445, 16.1564

Deuteranopia

23.6986, 23.2287, 14.7898



Tritanopia

26.6153, 23.2334, 23.8506

Trichromacy



Original Color

24.7696, 23.2087, 14.9786

Protanomaly

22.6430, 23.0494, 15.8259

Deuteranomaly

24.1627, 23.2771, 14.7747

Tritanomaly

25.8333, 23.0897, 20.2347

Monochromacy



Original Color

24.7696, 23.2087, 14.9786

Achromatopsia

22.2940, 23.4551, 25.5426

Achromatomaly

22.9354, 23.2750, 21.3729

CSS Examples

Text

The CSS property to change the color of the text to XYZ 24.7696, 23.2087, 14.9786 is called "color". The color property can be set on classes, ids or directly on the HTML element.

This example shows how text in the color `rgb(164, 124, 99)` looks like.

```
.text, #text, p{  
    color:rgb(164, 124, 99)  
}
```

If you want to add a text shadow in that color use the text-shadow property, you can generate a text shadow directly with our [CSS Text Shadow Generator](#).

Here you see how black text with a 4 pixel rgb(164, 124, 99) colored shadow looks like.

```
.shadow{ text-shadow: 4px 4px 2px rgb(164, 124, 99) }
```

Border

The CSS property to change the border of an element to XYZ 24.7696, 23.2087, 14.9786 is called "border". The border property can be set on classes, ids or directly on the HTML element.

This example shows the color as border, it can be applied via the CSS property "border" or "border-color".

```
.border, #border, table{ border:4px solid rgb(164, 124, 99) }
```


If only the border color should be changed use the property `border-color`.

```
.border{ border-color:rgb(164, 124, 99) }
```

If you want to add a box shadow in that color use:

Here you see how a box with a 4 pixel `rgb(164, 124, 99)` colored shadow looks like.

```
.boxshadow{ -moz-box-shadow:4px 4px 4px  
4px rgb(164, 124, 99); -webkit-box-  
shadow:4px 4px 4px 4px rgb(164, 124, 99);  
box-shadow:4px 4px 4px 4px rgb(164, 124,  
99) }
```

Background

The CSS property to change the background color of an element to XYZ 24.7696, 23.2087, 14.9786 is called "background". The background property can be set on classes, ids or directly on the HTML element.

```
.background, #background, body{  
background: rgb(164, 124, 99) }
```

If only the background color should be changed can be used:

```
.background{ background-color: rgb(164,  
124, 99) }
```

This example shows the color as background, it is applied via the CSS property "background".

To optimize and compress your CSS code, you can use our [online CSS compressor and optimizer](#) based on csstidy. If you want to create a linear or radial gradient as background or border, check our [CSS Gradient Generator](#).

Hey! You found this booklet interesting? Support Converting Colors with the new Membership Option!

The pro membership hides all ads, plus gives you double the colors in the color bucket, and more awesome pro features!

[Learn more, Memberships starting at \\$2.50/m!](#)

**Follow me
on Twitter!**

@ConvertingColor