

Converting Colors

XYZ(24.8371, 22.9076, 13.1103)

Have a look what the booklet for
XYZ(24.8371, 22.9076, 13.1103)
contains.

XYZ(24.7842, 22.8899, 13.0095)	3
<i>Conversions</i>	4
<i>Details</i>	6
<i>Harmonies</i>	12
<i>Previews</i>	24
<i>Color Blindness Simulation</i>	28
<i>CSS Examples</i>	31

Color

**XYZ(24.7842, 22.8899,
13.0095)**

Conversions

Conversions Part 1

Format	Color
Hex	A77A5B
RGB	167, 122, 91
RGB Percent	65%, 48%, 36%
CMY	0.3451, 0.5216, 0.6431
CMYK	0.00, 0.27, 0.46, 0.35
HSL	24°, 30%, 51%
HSV	24°, 46%, 65%
XYZ	24.7842, 22.8899, 13.0095
YIQ	131.9210, 36.7710, -0.1010

Conversions

Conversions Part 2

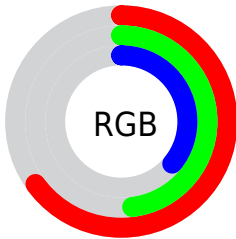
Format	Color
R_{YB}	167, 143, 91
Decimal	10975835
CIE _{Lab}	54.96, 13.58, 23.84
CIE _{LCh}	55, 27.433, 60.333
Yxy	22.8899, 0.4084, 0.3772
Android (android.graphics.Color)	4289165915 (0xFFA77A5B)
YUV	131.9210, -20.1741, 30.7643
Hunter-Lab	47.8434, 8.7420, 17.3683

Details

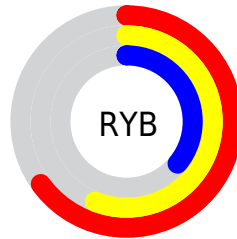
The XYZ color **24.7842, 22.8899, 13.0095** is a dark color, and the websafe version is hex **996633**. A complement of this color would be **20.0932, 22.6216, 39.8664**, and the grayscale version is **21.9653, 23.1092, 25.1659**.

A 20% lighter version of the original color is **50.6842, 48.0425, 31.8011**, and **9.6662, 8.4653, 3.6071** is the 20% darker color. If you saturate the color by 10%, you get **22.9896, 20.3282, 9.2440**, and if you desaturate by 10%, it is **26.8638, 25.7650, 17.6614**.

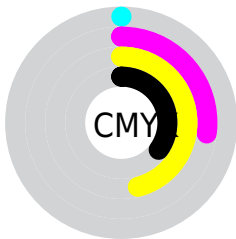
Distribution



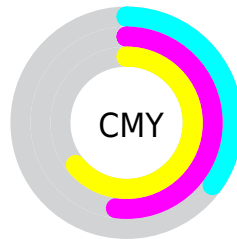
- Red (65%)
- Green (48%)
- Blue (36%)



- Red (65%)
- Yellow (56%)
- Blue (36%)



- Cyan (0%)
- Magenta (27%)
- Yellow (46%)
- Black (35%)





- Cyan (35%)
- Magenta (52%)
- Yellow (64%)

Brightness & Saturation Gradients


These gradients show how the XYZ color 24.7842, 22.8899, 13.0095 changes by changing the brightness by 10 percent. The first figure shows a shift by +10% for each color and the second figure -10%.


Similar to the brightness gradients but the following saturation gradients show a change of the XYZ color 24.7842, 22.8899, 13.0095 by changing the saturation by 10% instead.


 24.7842, 22.8899,
13.0095


 24.7842, 22.8899,
13.0095


269.1290,
267.1590, 222.1885


 16.0442, 14.5122,
7.3043


 50.7523, 48.2125,
32.0123

 9.6465, 8.4778,
3.5718


 68.7112, 65.9262,
46.1469

 5.2257, 4.4022,
1.3935

 90.4737, 87.5207,
63.9285

 2.4164, 1.9010,
0.1366

 116.4053,
113.3804, 85.7755

 0.8533, 0.5490,
0.0000

146.8713,
143.8897, 112.1064

 0.0000, 0.0000,
0.0000

182.2370,

179.4329, 143.3399

222.8678,
220.3946, 179.8944

■ 24.7842, 22.8899,
13.0095

■ 24.7842, 22.8899,
13.0095

■ 22.9896, 20.3282,
9.2440

■ 26.8638, 25.7650,
17.6614

■ 21.4639, 18.0649,
6.3056

■ 29.2400, 28.9612,
23.2511

■ 20.1917, 16.0887,
4.1300

■ 31.9257, 32.4899,
29.8274

■ 19.1550, 14.3858,
2.6423

■ 34.9326, 36.3609,
37.4354

■ 18.3317, 12.9404,
1.7470

■ 38.2716, 40.5838,
46.1174

■ 18.0111, 12.3651,
1.4374

■ 41.9531, 45.1673,
55.9134

■ 45.9871, 50.1204,
66.8612

■ 50.3832, 55.4512,
78.9969

■ 55.1503, 61.1680,
92.3550

Harmonies

Analogous

The Analogous color harmony consists of three colors that are next to each other on the color wheel.



27.2100, 22.8899, 17.3790



24.7842, 22.8899, 13.0095



21.7222, 22.8899, 11.6363

Triad

The Triadic color harmony groups three colors that are evenly spaced from another and form a triangle on the color wheel.



24.7842, 22.8899, 13.0095



16.4116, 22.8899, 25.0207



24.8485, 22.8899, 42.3746

Complementary

The Complementary color scheme is a pair of colors which are on the opposite of each other on the color wheel.



24.7842, 22.8899, 13.0095



20.0932, 22.6216, 39.8664

Split Complementary

Split-complementary colors differ from the complementary color scheme. The scheme consists of three colors, the original color and two neighbors of the complement color.



21.7902, 22.8899, 45.7284



24.7842, 22.8899, 13.0095



17.0846, 22.8899, 34.3850

Square

The Square scheme is like the rectangle color scheme, but the four colors are evenly spaced on the color wheel.



24.7842, 22.8899, 13.0095



17.0557, 22.8899, 17.5119



18.9854, 22.8899, 42.5135



27.2495, 22.8899, 34.1765

Rectangle

The Rectangle color scheme consists of four colors that form a rectangle on the color wheel.



24.7842, 22.8899, 13.0095



19.7848, 22.8899, 12.2762



18.9854, 22.8899, 42.5135



23.8543, 22.8899, 44.1810

Sweetspot

The Sweet Spot groups the original color and five complimentary colors.



24.7848, 22.8910, 13.0100



57.8209, 59.0234, 55.0256



24.1642, 17.4926, 25.6197



12.7010, 12.8988, 11.7200



80.6108, 84.8088, 92.3568



14.7206, 15.4872, 16.8656

Same Dimension

The Same Dimension uses a secret algorithm to generate beautiful new colors.



24.7848, 22.8910, 13.0100



41.0289, 36.1967, 16.2653



30.2917, 33.9048, 14.8456



7.7730, 8.0261, 7.9288



13.8281, 9.5535, 1.1152



0.3870, 0.3336, 0.0440

Inverse Universe

The Inverse Universe completely reimagines the original color for something new.



20.0932, 22.6216, 39.8664



31.5035, 35.6165, 70.6895



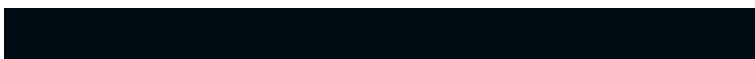
15.7137, 13.8625, 38.4066



7.4870, 8.0110, 9.5700



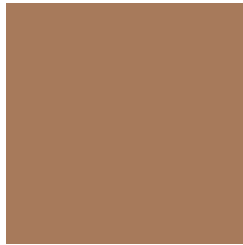
8.7915, 9.0432, 29.2576



0.2623, 0.3168, 0.7280

Previews

White Background



This preview shows how the XYZ color 24.7842, 22.8899, 13.0095 looks on a white background.

Color Contrast Check

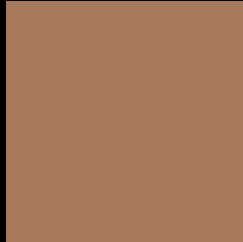
Large Text (above 18pt) WCAG AA ✓ Pass

Any Text WCAG AA × Fail

Large Text (above 18pt) WCAG AAA × Fail

Any Text WCAG AAA × Fail

Black Background



This preview shows how the XYZ color 24.7842, 22.8899, 13.0095 looks on a black background.

Color Contrast Check

Large Text (above 18pt) WCAG AA ✓ Pass

Any Text WCAG AA ✓ Pass

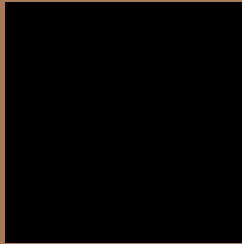
Large Text (above 18pt) WCAG AAA ✓ Pass

Any Text WCAG AAA × Fail

If you want to check with other color combinations, try the [Color Contrast Checker](#).

XYZ 24.7842, 22.8899, 13.0095

Background



This preview shows how black text looks on a background with the XYZ color 24.7842, 22.8899, 13.0095.



This preview shows how white text looks on a background with the XYZ color 24.7842, 22.8899,

Color Blindness Simulation

Color vision deficiency is a very complex topic, and I could not describe the different causes any better than Wikipedia does, so if you want to learn more, you should check out their [article about color blindness](#).

Dichromacy



Original Color

24.7842, 22.8899, 13.0095

Protanopia

21.4722, 23.0795, 14.1496

Deuteranopia

23.4069, 22.9290, 12.8649



Tritanopia

26.7047, 22.7750, 22.7272

Trichromacy



Original Color

24.7842, 22.8899, 13.0095

Protanomaly

22.5021, 22.8258, 13.8095

Deuteranomaly

23.8770, 22.9825, 12.8505

Tritanomaly

25.9396, 22.8209, 18.6605

Monochromacy



Original Color

24.7842, 22.8899, 13.0095

Achromatopsia

21.9318, 23.0740, 25.1276

Achromatomaly

22.6071, 22.7424, 20.0278

CSS Examples

Text

The CSS property to change the color of the text to XYZ 24.7842, 22.8899, 13.0095 is called "color". The color property can be set on classes, ids or directly on the HTML element.

This example shows how text in the color `rgb(167, 122, 91)` looks like.

```
.text, #text, p{  
    color:rgb(167, 122, 91)  
}
```

If you want to add a text shadow in that color use the text-shadow property, you can generate a text shadow directly with our [CSS Text Shadow Generator](#).

Here you see how black text with a 4 pixel rgb(167, 122, 91) colored shadow looks like.

```
.shadow{ text-shadow: 4px 4px 2px rgb(167, 122, 91) }
```

Border

The CSS property to change the border of an element to XYZ 24.7842, 22.8899, 13.0095 is called "border". The border property can be set on classes, ids or directly on the HTML element.

This example shows the color as border, it can be applied via the CSS property "border" or "border-color".

```
.border, #border, table{ border:4px solid rgb(167, 122, 91) }
```


If only the border color should be changed use the property `border-color`.

```
.border{ border-color:rgb(167, 122, 91) }
```

If you want to add a box shadow in that color use:

Here you see how a box with a 4 pixel `rgb(167, 122, 91)` colored shadow looks like.

```
.boxshadow{ -moz-box-shadow:4px 4px 4px  
4px rgb(167, 122, 91); -webkit-box-  
shadow:4px 4px 4px 4px rgb(167, 122, 91);  
box-shadow:4px 4px 4px 4px rgb(167, 122,  
91) }
```

Background

The CSS property to change the background color of an element to XYZ 24.7842, 22.8899, 13.0095 is called "background". The background property can be set on classes, ids or directly on the HTML element.

```
.background, #background, body{  
background: rgb(167, 122, 91) }
```

If only the background color should be changed can be used:

```
.background{ background-color: rgb(167,  
122, 91) }
```

This example shows the color as background, it is applied via the CSS property "background".

To optimize and compress your CSS code, you can use our [online CSS compressor and optimizer](#) based on csstidy. If you want to create a linear or radial gradient as background or border, check our [CSS Gradient Generator](#).

Hey! You found this booklet interesting? Support Converting Colors with the new Membership Option!

The pro membership hides all ads, plus gives you double the colors in the color bucket, and more awesome pro features!

[Learn more, Memberships starting at \\$2.50/m!](#)

**Follow me
on Twitter!**

@ConvertingColor