

Converting Colors

XYZ(24.8816, 21.3056, 11.1631)

Have a look what the booklet for
XYZ(24.8816, 21.3056, 11.1631)
contains.

XYZ(24.8500, 21.2271, 11.1750)	3
<i>Conversions</i>	4
<i>Details</i>	6
<i>Harmonies</i>	12
<i>Previews</i>	24
<i>Color Blindness Simulation</i>	28
<i>CSS Examples</i>	31

Color

**XYZ(24.8500, 21.2271,
11.1750)**

Conversions

Conversions Part 1

Format	Color
Hex	AE7054
RGB	174, 112, 84
RGB Percent	68%, 44%, 33%
CMY	0.3176, 0.5608, 0.6706
CMYK	0.00, 0.36, 0.52, 0.32
HSL	19°, 36%, 51%
HSV	19°, 52%, 68%
XYZ	24.8500, 21.2271, 11.1750
YIQ	127.3460, 45.9400, 4.4360

Conversions

Conversions Part 2

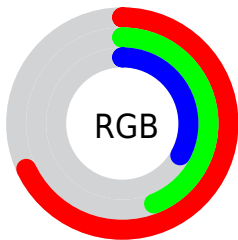
Format	Color
RYB	174, 125, 84
Decimal	11432020
CIELab	53.20, 21.45, 25.67
CIElCh	53, 33.451, 50.108
Yxy	21.2271, 0.4340, 0.3708
Android (android.graphics.Color)	4289622100 (0xFFAE7054)
YUV	127.3460, -21.3696, 40.9156
Hunter-Lab	46.0729, 15.6487, 17.8702

Details

The XYZ color **24.8500, 21.2271, 11.1750** is a dark color, and the websafe version is hex **996633**. A complement of this color would be **21.5746, 25.4975, 43.8288**, and the grayscale version is **20.3525, 21.4124, 23.3181**.

A 20% lighter version of the original color is **50.8572, 45.4280, 28.6423**, and **9.5986, 7.5465, 2.7844** is the 20% darker color. If you saturate the color by 10%, you get **23.0157, 18.5171, 7.6088**, and if you desaturate by 10%, it is **27.0307, 24.3591, 15.6923**.

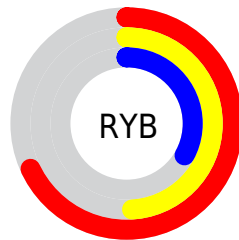
Distribution



Red (68%)

Green (44%)

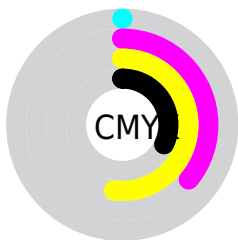
Blue (33%)



Red (68%)

Yellow (49%)

Blue (33%)

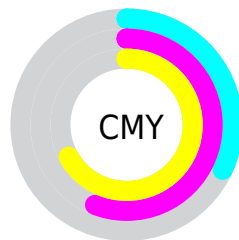


Cyan (0%)

Magenta (36%)

Yellow (52%)

Black (32%)



Cyan (32%)

Magenta (56%)

Yellow (67%)

Brightness & Saturation Gradients

These gradients show how the XYZ color 24.8500, 21.2271, 11.1750 changes by changing the brightness by 10 percent. The first figure shows a shift by +10% for each color and the second figure -10%.

Similar to the brightness gradients but the following saturation gradients show a change of the XYZ color 24.8500, 21.2271, 11.1750 by changing the saturation by 10% instead.

■ 24.8500, 21.2271,
11.1750

■ 24.8500, 21.2271,
11.1750

269.4515,
258.4830, 209.6446

■ 16.0935, 13.2901,
6.0690

■ 50.8584, 45.4652,
28.6249

■ 9.6816, 7.6286,
2.8176

■ 68.8410, 62.5351,
41.8059

■ 5.2490, 3.8582,
1.0023

■ 90.6297, 83.4180,
58.5156

■ 2.4303, 1.5946,
0.0000

■ 116.5898,
108.4985, 79.1727

■ 0.8603, 0.3539,
0.0000

■ 147.0867,
138.1608, 104.1956

■ 0.0000, 0.0000,
0.0000

182.4857,

172.7894, 134.0028

223.1522,
212.7686, 169.0130

■ 24.8500, 21.2271,
11.1750

■ 24.8500, 21.2271,
11.1750

■ 23.0157, 18.5171,
7.6088

■ 27.0307, 24.3591,
15.6923

■ 21.5066, 16.2070,
4.9228

■ 29.5742, 27.9275,
21.2220

■ 20.3013, 14.2772,
3.0382

■ 32.4978, 31.9500,
27.8217

■ 19.3744, 12.7052,
1.8611

■ 35.8170, 36.4422,
35.5442

■ 18.7813, 11.6501,
1.2588

■ 39.5463, 41.4190,
44.4390

■ 43.6999, 46.8946,
54.5523

■ 48.2907, 52.8827,
65.9281

■ 53.3315, 59.3963,
78.6080

■ 58.8343, 66.4480,
92.6318

Harmonies

Analogous

The Analogous color harmony consists of three colors that are next to each other on the color wheel.



27.2452, 21.2271, 17.0524



24.8500, 21.2271, 11.1750



21.3645, 21.2271, 8.7635

Triad

The Triadic color harmony groups three colors that are evenly spaced from another and form a triangle on the color wheel.



24.8500, 21.2271, 11.1750



14.1999, 21.2271, 19.9313



22.6007, 21.2271, 46.5976

Complementary

The Complementary color scheme is a pair of colors which are on the opposite of each other on the color wheel.



24.8500, 21.2271, 11.1750



21.5746, 25.4975, 43.8288

Split Complementary

Split-complementary colors differ from the complementary color scheme. The scheme consists of three colors, the original color and two neighbors of the complement color.



19.0319, 21.2271, 48.0423



24.8500, 21.2271, 11.1750



14.4489, 21.2271, 30.4616

Square

The Square scheme is like the rectangle color scheme, but the four colors are evenly spaced on the color wheel.



24.8500, 21.2271, 11.1750



15.4026, 21.2271, 12.7520



16.1277, 21.2271, 41.4683



25.8452, 21.2271, 37.9576

Rectangle

The Rectangle color scheme consists of four colors that form a rectangle on the color wheel.



24.8500, 21.2271, 11.1750



19.0076, 21.2271, 8.7702



16.1277, 21.2271, 41.4683



21.3908, 21.2271, 48.0215

Sweetspot

The Sweet Spot groups the original color and five complimentary colors.



24.8505, 21.2282, 11.1754



62.1326, 62.2798, 57.8281



25.8924, 17.4461, 29.6066



13.5423, 13.4802, 12.2319



84.5950, 89.0005, 96.9216



16.2198, 17.0645, 18.5832

Same Dimension

The Same Dimension uses a secret algorithm to generate beautiful new colors.



24.8505, 21.2282, 11.1754



41.3380, 32.9700, 13.0402



30.9443, 33.4158, 13.2067



8.2010, 8.4068, 8.4038



13.6697, 8.5449, 0.9289



0.4297, 0.3366, 0.0423

Inverse Universe

The Inverse Universe completely reimagines the original color for something new.



21.5746, 25.4975, 43.8288



34.6863, 41.4694, 78.8131



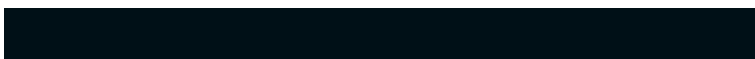
16.0477, 14.4438, 41.9865



8.0229, 8.6452, 10.1985



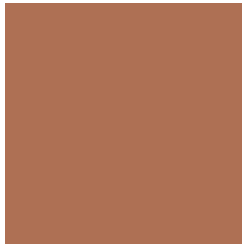
10.4552, 12.0442, 30.8182



0.3366, 0.4266, 0.8726

Previews

White Background



This preview shows how the XYZ color 24.8500, 21.2271, 11.1750 looks on a white background.

Color Contrast Check

Large Text (above 18pt) WCAG AA ✓ Pass

Any Text WCAG AA × Fail

Large Text (above 18pt) WCAG AAA × Fail

Any Text WCAG AAA × Fail

Black Background



This preview shows how the XYZ color 24.8500, 21.2271, 11.1750 looks on a black background.

Color Contrast Check

Large Text (above 18pt) WCAG AA ✓ Pass

Any Text WCAG AA ✓ Pass

Large Text (above 18pt) WCAG AAA ✓ Pass

Any Text WCAG AAA × Fail

If you want to check with other color combinations, try the [Color Contrast Checker](#).

XYZ 24.8500, 21.2271, 11.1750

Background



This preview shows how black text looks on a background with the XYZ color 24.8500, 21.2271, 11.1750.



This preview shows how white text looks on a background with the XYZ color 24.8500, 21.2271,

Color Blindness Simulation

Color vision deficiency is a very complex topic, and I could not describe the different causes any better than Wikipedia does, so if you want to learn more, you should check out their [article about color blindness](#).

Dichromacy



Original Color

24.8500, 21.2271, 11.1750

Protanopia

19.7514, 21.2353, 12.7307

Deuteranopia

21.6194, 21.3006, 10.9546



Tritanopia

26.4194, 21.2162, 19.2257

Trichromacy



Original Color

24.8500, 21.2271, 11.1750

Protanomaly

21.2987, 21.1077, 12.1841

Deuteranomaly

22.7377, 21.1585, 11.0692

Tritanomaly

25.6465, 21.0507, 15.8082

Monochromacy



Original Color

24.8500, 21.2271, 11.1750

Achromatopsia

20.1725, 21.2231, 23.1119

Achromatomaly

21.3304, 20.9961, 17.9673

CSS Examples

Text

The CSS property to change the color of the text to XYZ 24.8500, 21.2271, 11.1750 is called "color". The color property can be set on classes, ids or directly on the HTML element.

This example shows how text in the color `rgb(174, 112, 84)` looks like.

```
.text, #text, p{  
    color:rgb(174, 112, 84)  
}
```

If you want to add a text shadow in that color use the text-shadow property, you can generate a text shadow directly with our [CSS Text Shadow Generator](#).

Here you see how black text with a 4 pixel rgb(174, 112, 84) colored shadow looks like.

```
.shadow{ text-shadow: 4px 4px 2px rgb(174, 112, 84) }
```

Border

The CSS property to change the border of an element to XYZ 24.8500, 21.2271, 11.1750 is called "border". The border property can be set on classes, ids or directly on the HTML element.

This example shows the color as border, it can be applied via the CSS property "border" or "border-color".

```
.border, #border, table{ border:4px solid rgb(174, 112, 84) }
```


If only the border color should be changed use the property `border-color`.

```
.border{ border-color:rgb(174, 112, 84) }
```

If you want to add a box shadow in that color use:

Here you see how a box with a 4 pixel `rgb(174, 112, 84)` colored shadow looks like.

```
.boxshadow{ -moz-box-shadow:4px 4px 4px  
4px rgb(174, 112, 84); -webkit-box-  
shadow:4px 4px 4px 4px rgb(174, 112, 84);  
box-shadow:4px 4px 4px 4px rgb(174, 112,  
84) }
```

Background

The CSS property to change the background color of an element to XYZ 24.8500, 21.2271, 11.1750 is called "background". The background property can be set on classes, ids or directly on the HTML element.

```
.background, #background, body{  
background: rgb(174, 112, 84) }
```

If only the background color should be changed can be used:

```
.background{ background-color: rgb(174,  
112, 84) }
```

This example shows the color as background, it is applied via the CSS property "background".

To optimize and compress your CSS code, you can use our [online CSS compressor and optimizer](#) based on csstidy. If you want to create a linear or radial gradient as background or border, check our [CSS Gradient Generator](#).

Hey! You found this booklet interesting? Support Converting Colors with the new Membership Option!

The pro membership hides all ads, plus gives you double the colors in the color bucket, and more awesome pro features!

[Learn more, Memberships starting at \\$2.50/m!](#)

**Follow me
on Twitter!**

@ConvertingColor