

Converting Colors

XYZ(25.0779, 21.8421, 19.4253)

Have a look what the booklet for
XYZ(25.0779, 21.8421, 19.4253)
contains.

XYZ(25.1237, 21.8587, 19.4180)	3
<i>Conversions</i>	4
<i>Details</i>	6
<i>Harmonies</i>	12
<i>Previews</i>	24
<i>Color Blindness Simulation</i>	28
<i>CSS Examples</i>	31

Color

**XYZ(25.1237, 21.8587,
19.4180)**

Conversions

Conversions Part 1

Format	Color
Hex	A67474
RGB	166, 116, 116
RGB Percent	65%, 45%, 45%
CMY	0.3490, 0.5451, 0.5451
CMYK	0.00, 0.30, 0.30, 0.35
HSL	0°, 22%, 55%
HSV	0°, 30%, 65%
XYZ	25.1237, 21.8587, 19.4180
YIQ	130.9500, 29.8000, 10.6000

Conversions

Conversions Part 2

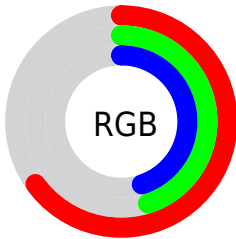
Format	Color
R_{YB}	166, 116, 116
Decimal	10908788
CIE _{Lab}	53.88, 19.69, 7.90
CIE _{LCh}	54, 21.220, 21.861
Yxy	21.8587, 0.3784, 0.3292
Android (android.graphics.Color)	4289098868 (0xFFA67474)
YUV	130.9500, -7.3703, 30.7389
Hunter-Lab	46.7533, 14.1019, 8.1024

Details

The XYZ color **25.1237, 21.8587, 19.4180** is a dark color, and the websafe version is hex **996666**. A complement of this color would be **27.7213, 33.7377, 41.1276**, and the grayscale version is **21.5740, 22.6976, 24.7177**.

A 20% lighter version of the original color is **51.1947, 46.3620, 43.2963**, and **9.8606, 7.9424, 6.4822** is the 20% darker color. If you saturate the color by 10%, you get **22.4976, 18.0162, 14.1968**, and if you desaturate by 10%, it is **28.2654, 26.4561, 25.6628**.

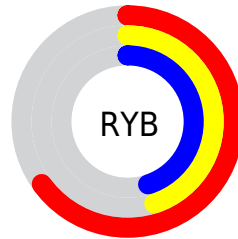
Distribution



Red (65%)

Green (45%)

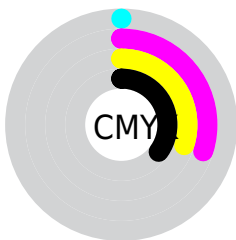
Blue (45%)



Red (65%)

Yellow (45%)

Blue (45%)

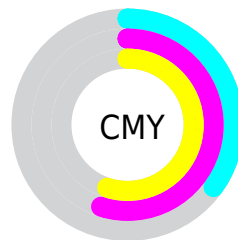


Cyan (0%)

Magenta (30%)

Yellow (30%)

Black (35%)



Cyan (35%)

Magenta (55%)

Yellow (55%)

Brightness & Saturation Gradients

These gradients show how the XYZ color 25.1237, 21.8587, 19.4180 changes by changing the brightness by 10 percent. The first figure shows a shift by +10% for each color and the second figure -10%.

Similar to the brightness gradients but the following saturation gradients show a change of the XYZ color 25.1237, 21.8587, 19.4180 by changing the saturation by 10% instead.

■ 25.1237, 21.8587,
19.4180

■ 25.1237, 21.8587,
19.4180

270.7897,
261.8075, 261.2459

■ 16.2985, 13.7531,
11.7928

■ 51.2993, 46.5123,
43.2853

■ 9.8278, 7.9492,
6.4820

■ 69.3803, 63.8292,
60.3645

■ 5.3463, 4.0624,
3.0668

■ 91.2774, 84.9853,
81.4322

■ 2.4887, 1.7085,
1.1288

■ 117.3557,
110.3649, 106.9068

■ 0.8896, 0.4292,
0.0000

147.9808,
140.3526, 137.2070

■ 0.0000, 0.0000,
0.0000

183.5179,

175.3326, 172.7512

224.3324,
215.6895, 213.9580

■ 25.1237, 21.8587,
19.4180

■ 25.1237, 21.8587,
19.4180

■ 22.4976, 18.0162,
14.1968

■ 28.2654, 26.4561,
25.6628

■ 20.3581, 14.8854,
9.9435

■ 31.9463, 31.8423,
32.9804

■ 18.6756, 12.4234,
6.5990


■ 36.1908, 38.0531,
41.4183

■ 17.4170, 10.5817,
4.0971

■ 41.0210, 45.1211,
51.0208


■ 16.5446, 9.3051,
2.3630

■ 46.4582, 53.0771,
61.8298


 16.0140, 8.5285,
1.3082

 52.5222, 61.9504,
73.8852

 15.7261, 8.1073,
0.7360

 59.2322, 71.7690,
87.2248

 66.6066, 82.5596,
101.8852

 69.5360, 86.8470,
107.7060

Harmonies

Analogous

The Analogous color harmony consists of three colors that are next to each other on the color wheel.



25.4332, 21.8587, 25.6255



25.1237, 21.8587, 19.4180



23.6076, 21.8587, 15.2161

Triad

The Triadic color harmony groups three colors that are evenly spaced from another and form a triangle on the color wheel.



25.1237, 21.8587, 19.4180



17.5102, 21.8587, 16.8481



20.1606, 21.8587, 38.5465

Complementary

The Complementary color scheme is a pair of colors which are on the opposite of each other on the color wheel.



25.1237, 21.8587, 19.4180



27.7213, 33.7377, 41.1276

Split Complementary

Split-complementary colors differ from the complementary color scheme. The scheme consists of three colors, the original color and two neighbors of the complement color.



18.1805, 21.8587, 35.1251



25.1237, 21.8587, 19.4180



16.7252, 21.8587, 22.0641

Square

The Square scheme is like the rectangle color scheme, but the four colors are evenly spaced on the color wheel.



25.1237, 21.8587, 19.4180



19.1835, 21.8587, 13.9328



16.9613, 21.8587, 28.7971



22.4544, 21.8587, 37.4838

Rectangle

The Rectangle color scheme consists of four colors that form a rectangle on the color wheel.



25.1237, 21.8587, 19.4180



22.1733, 21.8587, 13.7381



16.9613, 21.8587, 28.7971



19.4388, 21.8587, 37.8634

Sweetspot

The Sweet Spot groups the original color and five complimentary colors.



25.1243, 21.8597, 19.4184



58.6685, 58.7991, 61.2263



28.8545, 23.3512, 39.0631



12.9015, 12.8254, 13.2492



80.6108, 84.8088, 92.3568



14.7206, 15.4872, 16.8656

Same Dimension

The Same Dimension uses a secret algorithm to generate beautiful new colors.



25.1243, 21.8597, 19.4184



42.3736, 34.9550, 28.8326



28.4034, 28.4180, 20.5115



7.5312, 7.5424, 7.8482



12.1948, 6.2868, 0.5707



0.2967, 0.1530, 0.0139

Inverse Universe

The Inverse Universe completely reimagines the original color for something new.



27.7213, 33.7377, 41.1276



47.8399, 59.9561, 74.5265



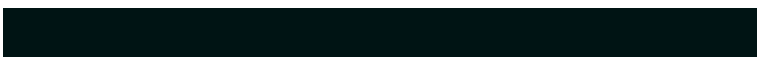
23.6105, 25.5162, 39.7573



7.7475, 8.5320, 9.6568



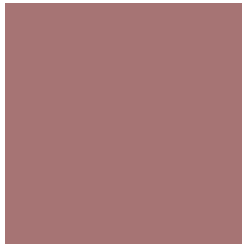
15.9102, 23.2805, 31.6305



0.3871, 0.5664, 0.7696

Previews

White Background



This preview shows how the XYZ color 25.1237, 21.8587, 19.4180 looks on a white background.

Color Contrast Check

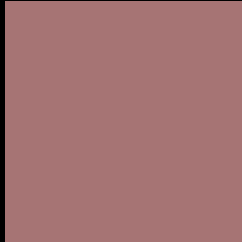
Large Text (above 18pt) WCAG AA ✓ Pass

Any Text WCAG AA ✗ Fail

Large Text (above 18pt) WCAG AAA ✗ Fail

Any Text WCAG AAA ✗ Fail

Black Background



This preview shows how the XYZ color 25.1237, 21.8587, 19.4180 looks on a black background.

Color Contrast Check

Large Text (above 18pt) WCAG AA ✓ Pass

Any Text WCAG AA ✓ Pass

Large Text (above 18pt) WCAG AAA ✓ Pass

Any Text WCAG AAA × Fail

If you want to check with other color combinations, try the [Color Contrast Checker](#).

XYZ 25.1237, 21.8587, 19.4180

Background



This preview shows how black text looks on a background with the XYZ color 25.1237, 21.8587, 19.4180.



This preview shows how white text looks on a background with the XYZ color 25.1237, 21.8587,

19.4180.

Color Blindness Simulation

Color vision deficiency is a very complex topic, and I could not describe the different causes any better than Wikipedia does, so if you want to learn more, you should check out their [article about color blindness](#).

Dichromacy



Original Color

25.1237, 21.8587, 19.4180

Protanopia

21.0983, 22.1171, 21.8959

Deuteranopia

22.2775, 21.8333, 18.9597



Tritanopia

25.7052, 21.9322, 21.9473

Trichromacy



Original Color

25.1237, 21.8587, 19.4180

Protanomaly

22.2749, 21.7911, 20.8014

Deuteranomaly

23.2583, 21.7826, 19.1983

Tritanomaly

25.5183, 21.8574, 20.9631

Monochromacy



Original Color

25.1237, 21.8587, 19.4180

Achromatopsia

21.5731, 22.6966, 24.7166

Achromatomaly

22.7283, 22.3574, 22.8562

CSS Examples

Text

The CSS property to change the color of the text to XYZ 25.1237, 21.8587, 19.4180 is called "color". The color property can be set on classes, ids or directly on the HTML element.

This example shows how text in the color `rgb(166, 116, 116)` looks like.

```
.text, #text, p{  
    color:rgb(166, 116, 116)  
}
```

If you want to add a text shadow in that color use the text-shadow property, you can generate a text shadow directly with our [CSS Text Shadow Generator](#).

Here you see how black text with a 4 pixel rgb(166, 116, 116) colored shadow looks like.

```
.shadow{ text-shadow: 4px 4px 2px rgb(166, 116, 116) }
```

Border

The CSS property to change the border of an element to XYZ 25.1237, 21.8587, 19.4180 is called "border". The border property can be set on classes, ids or directly on the HTML element.

This example shows the color as border, it can be applied via the CSS property "border" or "border-color".

```
.border, #border, table{ border:4px solid rgb(166, 116, 116) }
```


If only the border color should be changed use the property `border-color`.

```
.border{ border-color:rgb(166, 116, 116) }
```

If you want to add a box shadow in that color use:

Here you see how a box with a 4 pixel `rgb(166, 116, 116)` colored shadow looks like.

```
.boxshadow{ -moz-box-shadow:4px 4px 4px  
4px rgb(166, 116, 116); -webkit-box-  
shadow:4px 4px 4px 4px rgb(166, 116, 116);  
box-shadow:4px 4px 4px 4px rgb(166, 116,  
116) }
```

Background

The CSS property to change the background color of an element to XYZ 25.1237, 21.8587, 19.4180 is called "background". The background property can be set on classes, ids or directly on the HTML element.

```
.background, #background, body{  
background: rgb(166, 116, 116) }
```

If only the background color should be changed can be used:

```
.background{ background-color: rgb(166,  
116, 116) }
```

This example shows the color as background, it is applied via the CSS property "background".

To optimize and compress your CSS code, you can use our [online CSS compressor and optimizer](#) based on csstidy. If you want to create a linear or radial gradient as background or border, check our [CSS Gradient Generator](#).

Hey! You found this booklet interesting? Support Converting Colors with the new Membership Option!

The pro membership hides all ads, plus gives you double the colors in the color bucket, and more awesome pro features!

[Learn more, Memberships starting at \\$2.50/m!](#)

**Follow me
on Twitter!**

@ConvertingColor