

Converting Colors

XYZ(25.3011, 24.6950, 16.5325)

Have a look what the booklet for
XYZ(25.3011, 24.6950, 16.5325)
contains.

XYZ(25.1793, 24.5418, 16.5067)	3
<i>Conversions</i>	4
<i>Details</i>	6
<i>Harmonies</i>	12
<i>Previews</i>	24
<i>Color Blindness Simulation</i>	28
<i>CSS Examples</i>	31

Color

**XYZ(25.1793, 24.5418,
16.5067)**

Conversions

Conversions Part 1

Format	Color
Hex	A18268
RGB	161, 130, 104
RGB Percent	63%, 51%, 41%
CMY	0.3686, 0.4902, 0.5922
CMYK	0.00, 0.19, 0.35, 0.37
HSL	27°, 23%, 52%
HSV	27°, 35%, 63%
XYZ	25.1793, 24.5418, 16.5067
YIQ	136.3050, 26.8220, -1.5140

Conversions

Conversions Part 2

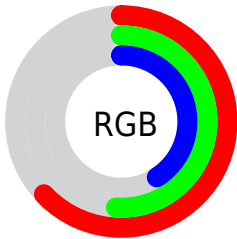
Format	Color
R_{YB}	161, 152, 104
Decimal	10584680
CIE _{Lab}	56.63, 8.08, 18.58
CIE _{LCh}	57, 20.256, 66.494
Yxy	24.5418, 0.3802, 0.3706
Android (android.graphics.Color)	4288774760 (0xFFA18268)
YUV	136.3050, -15.9264, 21.6575
Hunter-Lab	49.5397, 4.0309, 14.9223

Details

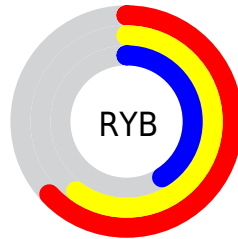
The XYZ color **25.1793, 24.5418, 16.5067** is a dark color, and the websafe version is hex **996666**. A complement of this color would be **20.8058, 22.8436, 37.0310**, and the grayscale version is **23.5675, 24.7948, 27.0016**.

A 20% lighter version of the original color is **51.4652, 50.9852, 38.1390**, and **9.8653, 9.3684, 5.1592** is the 20% darker color. If you saturate the color by 10%, you get **23.3230, 22.0153, 12.2312**, and if you desaturate by 10%, it is **27.2921, 27.3312, 21.6386**.

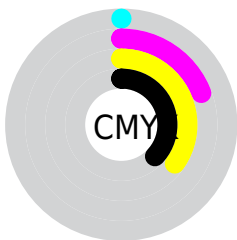
Distribution



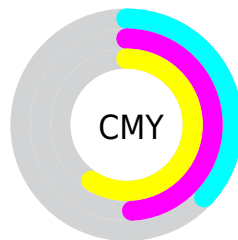
- Red (63%)
- Green (51%)
- Blue (41%)



- Red (63%)
- Yellow (60%)
- Blue (41%)



- Cyan (0%)
- Magenta (19%)
- Yellow (35%)
- Black (37%)



- Cyan (37%)
- Magenta (49%)
- Yellow (59%)

Brightness & Saturation Gradients

These gradients show how the XYZ color 25.1793, 24.5418, 16.5067 changes by changing the brightness by 10 percent. The first figure shows a shift by +10% for each color and the second figure -10%.

Similar to the brightness gradients but the following saturation gradients show a change of the XYZ color 25.1793, 24.5418, 16.5067 by changing the saturation by 10% instead.

■ 25.1793, 24.5418,
16.5067

■ 25.1793, 24.5418,
16.5067

271.0609,
275.5483, 244.2603

■ 16.3401, 15.7360,
9.7252

■ 51.3888, 50.9129,
38.2546

■ 9.8575, 9.3375,
5.1139

■ 69.4897, 69.2470,
54.0581

■ 5.3661, 4.9620,
2.2543

■ 91.4087, 91.5260,
73.7060

■ 2.5006, 2.2250,
0.7055

■ 117.5111,
118.1343, 97.6168

■ 0.8956, 0.7336,
0.0000

148.1621,
149.4563, 126.2091

■ 0.0000, 0.0000,
0.0000

183.7272,

185.8764, 159.9014

224.5716,
227.7789, 199.1123

■ 25.1793, 24.5418,
16.5067

■ 25.1793, 24.5418,
16.5067

■ 23.3230, 22.0153,
12.2312

■ 27.2921, 27.3312,
21.6386

■ 21.7100, 19.7400,
8.7629

■ 29.6702, 30.3882,
27.6694

■ 20.3285, 17.7077,
6.0497

■ 32.3240, 33.7216,
34.6406

■ 19.1649, 15.9090,
4.0327

■ 35.2630, 37.3385,
42.5907

■ 18.2037, 14.3330,
2.6443

■ 38.4960, 41.2461,
51.5558

■ 17.4256, 12.9674,
1.7971

■ 42.0316, 45.4511,
61.5705

■ 17.1101, 12.4012,
1.4919

■ 45.8779, 49.9599,
72.6675

■ 50.0426, 54.7788,
84.8781

■ 54.5333, 59.9140,
98.2324

Harmonies

Analogous

The Analogous color harmony consists of three colors that are next to each other on the color wheel.



27.1591, 24.5418, 19.7275



25.1793, 24.5418, 16.5067



22.8179, 24.5418, 15.7969

Triad

The Triadic color harmony groups three colors that are evenly spaced from another and form a triangle on the color wheel.



25.1793, 24.5418, 16.5067



19.1102, 24.5418, 28.2154



26.1242, 24.5418, 38.5618

Complementary

The Complementary color scheme is a pair of colors which are on the opposite of each other on the color wheel.



25.1793, 24.5418, 16.5067



20.8058, 22.8436, 37.0310

Split Complementary

Split-complementary colors differ from the complementary color scheme. The scheme consists of three colors, the original color and two neighbors of the complement color.



23.8421, 24.5418, 41.7888



25.1793, 24.5418, 16.5067



19.8721, 24.5418, 35.2003

Square

The Square scheme is like the rectangle color scheme, but the four colors are evenly spaced on the color wheel.



25.1793, 24.5418, 16.5067



19.4154, 24.5418, 21.8760



21.5664, 24.5418, 40.4652



27.7299, 24.5418, 32.2351

Rectangle

The Rectangle color scheme consists of four colors that form a rectangle on the color wheel.



25.1793, 24.5418, 16.5067



21.3640, 24.5418, 16.7148



21.5664, 24.5418, 40.4652



25.4051, 24.5418, 40.0896

Sweetspot

The Sweet Spot groups the original color and five complimentary colors.



25.1799, 24.5429, 16.5072



55.0700, 56.8667, 54.5835



24.0464, 19.2372, 25.4971



11.9489, 12.3095, 11.6343



76.7382, 80.7346, 87.9200



13.3056, 13.9985, 15.2444

Same Dimension

The Same Dimension uses a secret algorithm to generate beautiful new colors.



25.1799, 24.5429, 16.5072



42.5958, 40.5667, 23.7638



29.4493, 33.0816, 17.9303



7.3275, 7.5934, 7.4596



13.7051, 9.9841, 1.2048



0.3350, 0.3039, 0.0410

Inverse Universe

The Inverse Universe completely reimagines the original color for something new.



20.8058, 22.8436, 37.0310



33.6398, 37.0828, 65.7712



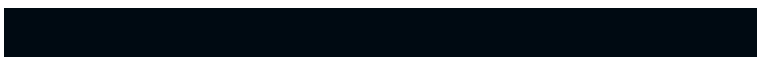
17.3843, 16.0008, 35.8905



7.0046, 7.4682, 8.9754



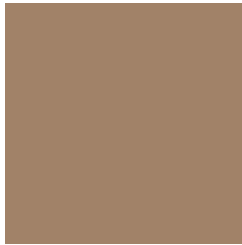
7.9369, 7.6531, 27.9887



0.2133, 0.2539, 0.6036

Previews

White Background



This preview shows how the XYZ color 25.1793, 24.5418, 16.5067 looks on a white background.

Color Contrast Check

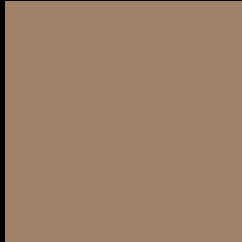
Large Text (above 18pt) WCAG AA ✓ Pass

Any Text WCAG AA × Fail

Large Text (above 18pt) WCAG AAA × Fail

Any Text WCAG AAA × Fail

Black Background



This preview shows how the XYZ color 25.1793, 24.5418, 16.5067 looks on a black background.

Color Contrast Check

Large Text (above 18pt) WCAG AA ✓ Pass

Any Text WCAG AA ✓ Pass

Large Text (above 18pt) WCAG AAA ✓ Pass

Any Text WCAG AAA × Fail

If you want to check with other color combinations, try the [Color Contrast Checker](#).

XYZ 25.1793, 24.5418, 16.5067

Background



This preview shows how black text looks on a background with the XYZ color 25.1793, 24.5418, 16.5067.



This preview shows how white text looks on a background with the XYZ color 25.1793, 24.5418,

Color Blindness Simulation

Color vision deficiency is a very complex topic, and I could not describe the different causes any better than Wikipedia does, so if you want to learn more, you should check out their [article about color blindness](#).

Dichromacy



Original Color

25.1793, 24.5418, 16.5067

Protanopia

23.1351, 24.6896, 17.4561

Deuteranopia

24.9785, 24.4383, 16.4973



Tritanopia

27.1439, 24.5635, 26.2323

Trichromacy



Original Color

25.1793, 24.5418, 16.5067

Protanomaly

23.8891, 24.6701, 17.1384

Deuteranomaly

24.9785, 24.4383, 16.4973

Tritanomaly

26.3317, 24.4205, 22.3946

Monochromacy



Original Color

25.1793, 24.5418, 16.5067

Achromatopsia

23.4014, 24.6201, 26.8113

Achromatomaly

23.8402, 24.5252, 22.5461

CSS Examples

Text

The CSS property to change the color of the text to XYZ 25.1793, 24.5418, 16.5067 is called "color". The color property can be set on classes, ids or directly on the HTML element.

This example shows how text in the color `rgb(161, 130, 104)` looks like.

```
.text, #text, p{  
    color:rgb(161, 130, 104)  
}
```

If you want to add a text shadow in that color use the text-shadow property, you can generate a text shadow directly with our [CSS Text Shadow Generator](#).

Here you see how black text with a 4 pixel rgb(161, 130, 104) colored shadow looks like.

```
.shadow{ text-shadow: 4px 4px 2px rgb(161, 130, 104) }
```

Border

The CSS property to change the border of an element to XYZ 25.1793, 24.5418, 16.5067 is called "border". The border property can be set on classes, ids or directly on the HTML element.

This example shows the color as border, it can be applied via the CSS property "border" or "border-color".

```
.border, #border, table{ border:4px solid rgb(161, 130, 104) }
```


If only the border color should be changed use the property `border-color`.

```
.border{ border-color:rgb(161, 130, 104) }
```

If you want to add a box shadow in that color use:

Here you see how a box with a 4 pixel `rgb(161, 130, 104)` colored shadow looks like.

```
.boxshadow{ -moz-box-shadow:4px 4px 4px  
4px rgb(161, 130, 104); -webkit-box-  
shadow:4px 4px 4px 4px rgb(161, 130, 104);  
box-shadow:4px 4px 4px 4px rgb(161, 130,  
104) }
```

Background

The CSS property to change the background color of an element to XYZ 25.1793, 24.5418, 16.5067 is called "background". The background property can be set on classes, ids or directly on the HTML element.

```
.background, #background, body{  
background: rgb(161, 130, 104) }
```

If only the background color should be changed can be used:

```
.background{ background-color: rgb(161,  
130, 104) }
```

This example shows the color as background, it is applied via the CSS property "background".

To optimize and compress your CSS code, you can use our [online CSS compressor and optimizer](#) based on csstidy. If you want to create a linear or radial gradient as background or border, check our [CSS Gradient Generator](#).

Hey! You found this booklet interesting? Support Converting Colors with the new Membership Option!

The pro membership hides all ads, plus gives you double the colors in the color bucket, and more awesome pro features!

[Learn more, Memberships starting at \\$2.50/m!](#)

**Follow me
on Twitter!**

@ConvertingColor