

Converting Colors

XYZ(25.3041, 26.3759, 30.5455)

Have a look what the booklet for
XYZ(25.3041, 26.3759, 30.5455)
contains.

XYZ(25.3041, 26.3759, 30.5455)	3
<i>Conversions</i>	4
<i>Details</i>	6
<i>Harmonies</i>	12
<i>Previews</i>	24
<i>Color Blindness Simulation</i>	28
<i>CSS Examples</i>	31

Color

**XYZ(25.3041, 26.3759,
30.5455)**

Conversions

Conversions Part 1

Format	Color
Hex	8C8C91
RGB	140, 140, 145
RGB Percent	55%, 55%, 57%
CMY	0.4510, 0.4510, 0.4314
CMYK	0.03, 0.03, 0.00, 0.43
HSL	240°, 2%, 56%
HSV	240°, 3%, 57%
XYZ	25.3041, 26.3759, 30.5455
YIQ	140.5700, -1.6050, 1.5550

Conversions

Conversions Part 2

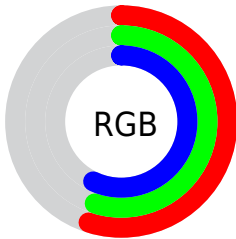
Format	Color
RYB	140, 140, 145
Decimal	9211025
CIELab	58.39, 1.00, -2.66
CIELCh	58, 2.844, 290.523
Yxy	26.3759, 0.3077, 0.3208
Android (android.graphics.Color)	4287401105 (0xFF8C8C91)
YUV	140.5700, 2.1840, -0.4999
Hunter-Lab	51.3575, -1.9277, 0.6868

Details

The XYZ color **25.3041, 26.3759, 30.5455** is a dark color, and the websafe version is hex **999999**. A complement of this color would be **26.5362, 28.1637, 28.8488**, and the grayscale version is **25.1420, 26.4513, 28.8055**.

A 20% lighter version of the original color is **51.8487, 54.1764, 61.7572**, and **9.9382, 10.3122, 12.2931** is the 20% darker color. If you saturate the color by 10%, you get **21.0400, 21.2388, 29.7791**, and if you desaturate by 10%, it is **30.1707, 32.2391, 31.4211**.

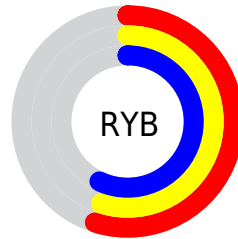
Distribution



Red (55%)

Green (55%)

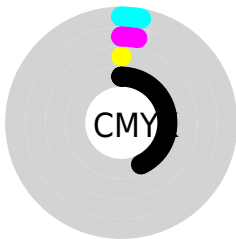
Blue (57%)



Red (55%)

Yellow (55%)

Blue (57%)

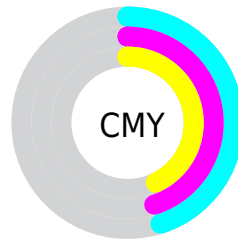


Cyan (3%)

Magenta (3%)

Yellow (0%)

Black (43%)



Cyan (45%)

Magenta (45%)

Yellow (43%)

Brightness & Saturation Gradients

These gradients show how the XYZ color 25.3041, 26.3759, 30.5455 changes by changing the brightness by 10 percent. The first figure shows a shift by +10% for each color and the second figure -10%.

Similar to the brightness gradients but the following saturation gradients show a change of the XYZ color 25.3041, 26.3759, 30.5455 by changing the saturation by 10% instead.

■ 25.3041, 26.3759,
30.5455

■ 25.3041, 26.3759,
30.5455

271.6688,
284.6225, 318.7250

■ 16.4337, 17.1051,
19.9974

■ 51.5895, 53.8807,
61.5950

■ 9.9244, 10.3094,
12.2091

■ 69.7352, 72.8835,
82.9334

■ 5.4107, 5.6046,
6.7620

■ 91.7033, 95.8991,
108.7058

■ 2.5274, 2.6062,
3.2375

117.8594,
123.3119, 139.3306

■ 0.9091, 0.9298,
1.2172

148.5685,
155.5062, 175.2264

■ 0.0000, 0.0000,
0.0000

184.1963,

192.8665, 216.8117

225.1079,
235.7771, 264.5051

■ 25.3041, 26.3759,
30.5455

■ 25.3041, 26.3759,
30.5455

■ 21.0400, 21.2388,
29.7791

■ 30.1707, 32.2391,
31.4211

■ 17.3528, 16.7965,
29.1160

■ 35.6594, 38.8517,
32.4082

■ 14.2184, 13.0200,
28.5522

■ 41.7921, 46.2399,
33.5110

■ 11.6102, 9.8774,
28.0831

■ 48.5887, 54.4277,
34.7332

■ 9.4993, 7.3339,
27.7034

■ 56.0682, 63.4382,
36.0782

■ 7.8542, 5.3514,
27.4075

■ 64.2489, 73.2934,
37.5493

■ 6.6397, 3.8877,
27.1890

■ 73.1486, 84.0146,
39.1496

■ 5.8154, 2.8942,
27.0406

■ 82.1109, 94.8244,
40.7637

■ 5.3336, 2.3133,
26.9539

Harmonies

Analogous

The Analogous color harmony consists of three colors that are next to each other on the color wheel.



24.9598, 26.3759, 30.6448



25.3041, 26.3759, 30.5455



25.5879, 26.3759, 29.9507

Triad

The Triadic color harmony groups three colors that are evenly spaced from another and form a triangle on the color wheel.



25.3041, 26.3759, 30.5455



25.4960, 26.3759, 27.2693



24.4173, 26.3759, 28.4055

Complementary

The Complementary color scheme is a pair of colors which are on the opposite of each other on the color wheel.



25.3041, 26.3759, 30.5455



26.5362, 28.1637, 28.8488

Split Complementary

Split-complementary colors differ from the complementary color scheme. The scheme consists of three colors, the original color and two neighbors of the complement color.



24.5581, 26.3759, 27.5213



25.3041, 26.3759, 30.5455



25.1795, 26.3759, 26.8754

Square

The Square scheme is like the rectangle color scheme, but the four colors are evenly spaced on the color wheel.



25.3041, 26.3759, 30.5455



25.6994, 26.3759, 28.0543



24.8364, 26.3759, 26.9666



24.4499, 26.3759, 29.3939

Rectangle

The Rectangle color scheme consists of four colors that form a rectangle on the color wheel.



25.3041, 26.3759, 30.5455



25.7037, 26.3759, 29.3606



24.8364, 26.3759, 26.9666



24.4458, 26.3759, 28.0866

Sweetspot

The Sweet Spot groups the original color and five complimentary colors.



25.3049, 26.3770, 30.5461



47.3314, 49.6641, 55.0650



26.0454, 27.8685, 30.7612



10.5418, 11.0632, 12.2520



69.3244, 72.9347, 79.4259



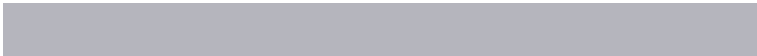
10.7221, 11.2805, 12.2844

Same Dimension

The Same Dimension uses a secret algorithm to generate beautiful new colors.



25.3049, 26.3770, 30.5461



44.8000, 46.6143, 54.6098



25.7163, 26.5886, 30.5652



5.5792, 5.7968, 6.8536



4.3844, 1.7549, 23.0847



0.0420, 0.0168, 0.2207

Inverse Universe

The Inverse Universe completely reimagines the original color for something new.



25.7893, 26.6698, 28.6008



45.8232, 47.2327, 50.5015



26.1151, 27.9472, 28.8292



5.7231, 5.8838, 6.2760



10.0162, 5.1635, 0.4706



0.0958, 0.0494, 0.0046

Previews

White Background



This preview shows how the XYZ color 25.3041, 26.3759, 30.5455 looks on a white background.

Color Contrast Check

Large Text (above 18pt) WCAG AA ✓ Pass

Any Text WCAG AA × Fail

Large Text (above 18pt) WCAG AAA × Fail

Any Text WCAG AAA × Fail

Black Background



This preview shows how the XYZ color 25.3041, 26.3759, 30.5455 looks on a black background.

Color Contrast Check

Large Text (above 18pt) WCAG AA ✓ Pass

Any Text WCAG AA ✓ Pass

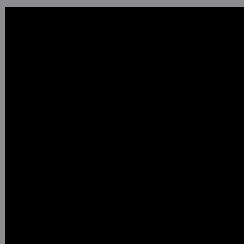
Large Text (above 18pt) WCAG AAA ✓ Pass

Any Text WCAG AAA × Fail

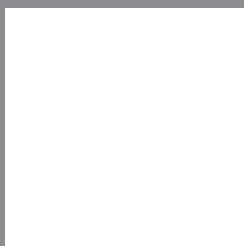
If you want to check with other color combinations, try the [Color Contrast Checker](#).

XYZ 25.3041, 26.3759, 30.5455

Background



This preview shows how black text looks on a background with the XYZ color 25.3041, 26.3759, 30.5455.

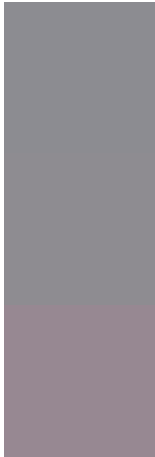


This preview shows how white text looks on a background with the XYZ color 25.3041, 26.3759,

Color Blindness Simulation

Color vision deficiency is a very complex topic, and I could not describe the different causes any better than Wikipedia does, so if you want to learn more, you should check out their [article about color blindness](#).

Dichromacy



Original Color

25.3041, 26.3759, 30.5455

Protanopia

25.6442, 26.5513, 30.5614

Deuteranopia

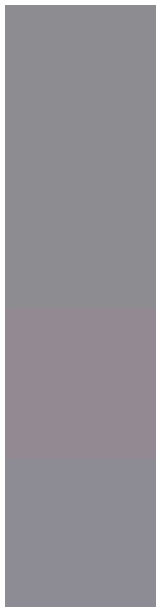
26.7550, 26.2630, 30.8532



Tritanopia

25.7221, 26.3300, 32.5807

Trichromacy



Original Color

25.3041, 26.3759, 30.5455

Protanomaly

25.4734, 26.4632, 30.5534

Deuteranomaly

26.1666, 26.1697, 30.8663

Tritanomaly

25.5624, 26.2661, 31.7395

Monochromacy



Original Color

25.3041, 26.3759, 30.5455

Achromatopsia

25.3171, 26.6356, 29.0061

Achromatomaly

25.3919, 26.6655, 29.3998

CSS Examples

Text

The CSS property to change the color of the text to XYZ 25.3041, 26.3759, 30.5455 is called "color". The color property can be set on classes, ids or directly on the HTML element.

This example shows how text in the color `rgb(140, 140, 145)` looks like.

```
.text, #text, p{  
    color:rgb(140, 140, 145)  
}
```

If you want to add a text shadow in that color use the text-shadow property, you can generate a text shadow directly with our [CSS Text Shadow Generator](#).

Here you see how black text with a 4 pixel rgb(140, 140, 145) colored shadow looks like.

```
.shadow{ text-shadow: 4px 4px 2px rgb(140, 140, 145) }
```

Border

The CSS property to change the border of an element to XYZ 25.3041, 26.3759, 30.5455 is called "border". The border property can be set on classes, ids or directly on the HTML element.

This example shows the color as border, it can be applied via the CSS property "border" or "border-color".

```
.border, #border, table{ border:4px solid rgb(140, 140, 145) }
```


If only the border color should be changed use the property `border-color`.

```
.border{ border-color:rgb(140, 140, 145) }
```

If you want to add a box shadow in that color use:

Here you see how a box with a 4 pixel `rgb(140, 140, 145)` colored shadow looks like.

```
.boxshadow{ -moz-box-shadow:4px 4px 4px  
4px rgb(140, 140, 145); -webkit-box-  
shadow:4px 4px 4px 4px rgb(140, 140, 145);  
box-shadow:4px 4px 4px 4px rgb(140, 140,  
145) }
```

Background

The CSS property to change the background color of an element to XYZ 25.3041, 26.3759, 30.5455 is called "background". The background property can be set on classes, ids or directly on the HTML element.

```
.background, #background, body{  
background: rgb(140, 140, 145) }
```

If only the background color should be changed can be used:

```
.background{ background-color: rgb(140,  
140, 145) }
```

This example shows the color as background, it is applied via the CSS property "background".

To optimize and compress your CSS code, you can use our [online CSS compressor and optimizer](#) based on csstidy. If you want to create a linear or radial gradient as background or border, check our [CSS Gradient Generator](#).

Hey! You found this booklet interesting? Support Converting Colors with the new Membership Option!

The pro membership hides all ads, plus gives you double the colors in the color bucket, and more awesome pro features!

[Learn more, Memberships starting at \\$2.50/m!](#)

**Follow me
on Twitter!**

@ConvertingColor