

Converting Colors

XYZ(25.7234, 25.0588, 20.1661)

Have a look what the booklet for
XYZ(25.7234, 25.0588, 20.1661)
contains.

XYZ(25.7602, 25.1578, 20.3279)	3
<i>Conversions</i>	4
<i>Details</i>	6
<i>Harmonies</i>	12
<i>Previews</i>	24
<i>Color Blindness Simulation</i>	28
<i>CSS Examples</i>	31

Color

**XYZ(25.7602, 25.1578,
20.3279)**

Conversions

Conversions Part 1

Format	Color
Hex	9F8475
RGB	159, 132, 117
RGB Percent	62%, 52%, 46%
CMY	0.3765, 0.4823, 0.5412
CMYK	0.00, 0.17, 0.26, 0.38
HSL	21°, 18%, 54%
HSV	21°, 26%, 62%
XYZ	25.7602, 25.1578, 20.3279
YIQ	138.3630, 20.9070, 1.0590

Conversions

Conversions Part 2

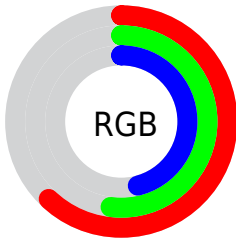
Format	Color
R_{YB}	159, 140, 117
Decimal	10454133
CIE _{Lab}	57.23, 7.93, 11.95
CIE _{LCh}	57, 14.343, 56.422
Yxy	25.1578, 0.3616, 0.3531
Android (android.graphics.Color)	4288644213 (0xFF9F8475)
YUV	138.3630, -10.5320, 18.0986
Hunter-Lab	50.1576, 3.8993, 11.0812

Details

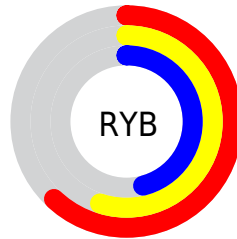
The XYZ color **25.7602, 25.1578, 20.3279** is a dark color, and the websafe version is hex **999999**. A complement of this color would be **23.5671, 26.2309, 36.6219**, and the grayscale version is **24.3301, 25.5972, 27.8753**.

A 20% lighter version of the original color is **52.2419, 51.8586, 44.7924**, and **10.2308, 9.7420, 6.9714** is the 20% darker color. If you saturate the color by 10%, you get **23.5850, 22.1786, 15.3758**, and if you desaturate by 10%, it is **28.2313, 28.4745, 26.1627**.

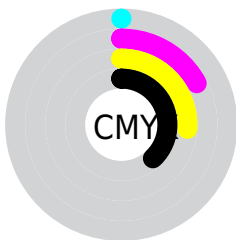
Distribution



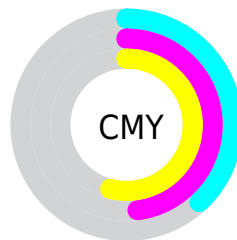
- Red (62%)
- Green (52%)
- Blue (46%)



- Red (62%)
- Yellow (55%)
- Blue (46%)



- Cyan (0%)
- Magenta (17%)
- Yellow (26%)
- Black (38%)



- Cyan (38%)
- Magenta (48%)
- Yellow (54%)

Brightness & Saturation Gradients

These gradients show how the XYZ color 25.7602, 25.1578, 20.3279 changes by changing the brightness by 10 percent. The first figure shows a shift by +10% for each color and the second figure -10%.

Similar to the brightness gradients but the following saturation gradients show a change of the XYZ color 25.7602, 25.1578, 20.3279 by changing the saturation by 10% instead.

■ 25.7602, 25.1578,
20.3279

■ 25.7602, 25.1578,
20.3279

273.8813,
278.6229, 266.3475

■ 16.7761, 16.1947,
12.4472

■ 52.3219, 51.9131,
44.8324

■ 10.1693, 9.6620,
6.9228

■ 70.6302, 70.4741,
62.2933

■ 5.5745, 5.1754,
3.3361

■ 92.7772, 93.0031,
83.7847

■ 2.6263, 2.3506,
1.2687

119.1284,
119.8845, 109.7250

■ 0.9594, 0.8003,
0.0360

150.0490,
151.5029, 140.5330

■ 0.0000, 0.0000,
0.0000

185.9045,

188.2424, 176.6270

227.0601,
230.4876, 218.4256

■ 25.7602, 25.1578,
20.3279

■ 25.7602, 25.1578,
20.3279

■ 23.5850, 22.1786,
15.3758

■ 28.2313, 28.4745,
26.1627

■ 21.6919, 19.5223,
11.2612

■ 31.0076, 32.1355,
32.9192

■ 20.0687, 17.1786,
7.9374

■ 34.1002, 36.1521,
40.6357

■ 18.7016, 15.1350,
5.3524

■ 37.5192, 40.5338,
49.3482

■ 17.5752, 13.3781,
3.4477

■ 41.2742, 45.2897,
59.0906

■ 16.6722, 11.8936,
2.1560

■ 45.3744, 50.4286,
69.8953

■ 15.9695, 10.6638,
1.3804

■ 49.8285, 55.9591,
81.7932

■ 15.7513, 10.2773,
1.1535

■ 54.6451, 61.8894,
94.8140

■ 58.9999, 67.8947,
104.6031

Harmonies

Analogous

The Analogous color harmony consists of three colors that are next to each other on the color wheel.



26.9512, 25.1578, 23.4450



25.7602, 25.1578, 20.3279



24.1157, 25.1578, 19.0919

Triad

The Triadic color harmony groups three colors that are evenly spaced from another and form a triangle on the color wheel.



25.7602, 25.1578, 20.3279



20.8038, 25.1578, 26.8141



25.3917, 25.1578, 36.6320

Complementary

The Complementary color scheme is a pair of colors which are on the opposite of each other on the color wheel.



25.7602, 25.1578, 20.3279



23.5671, 26.2309, 36.6219

Split Complementary

Split-complementary colors differ from the complementary color scheme. The scheme consists of three colors, the original color and two neighbors of the complement color.



23.7089, 25.1578, 37.8059



25.7602, 25.1578, 20.3279



21.1098, 25.1578, 31.7601

Square

The Square scheme is like the rectangle color scheme, but the four colors are evenly spaced on the color wheel.



25.7602, 25.1578, 20.3279



21.2976, 25.1578, 22.5471



22.1539, 25.1578, 35.9294



26.7315, 25.1578, 32.8868

Rectangle

The Rectangle color scheme consists of four colors that form a rectangle on the color wheel.



25.7602, 25.1578, 20.3279



23.0020, 25.1578, 19.3784



22.1539, 25.1578, 35.9294



24.8452, 25.1578, 37.3581

Sweetspot

The Sweet Spot groups the original color and five complimentary colors.



25.7609, 25.1590, 20.3284



54.6275, 56.3672, 56.7309



25.7166, 22.1166, 29.4197



12.1494, 12.4895, 12.3824



76.7382, 80.7346, 87.9200



13.3056, 13.9985, 15.2444

Same Dimension

The Same Dimension uses a secret algorithm to generate beautiful new colors.



25.7609, 25.1590, 20.3284



43.6608, 41.6817, 30.7310



28.8513, 31.3398, 21.3586



6.8173, 7.0146, 6.9803



12.4774, 8.1904, 0.9233



0.2612, 0.2227, 0.0292

Inverse Universe

The Inverse Universe completely reimagines the original color for something new.



23.5671, 26.2309, 36.6219



39.0204, 43.9399, 65.1681



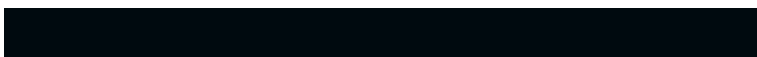
20.7147, 20.5259, 35.6710



6.6223, 7.1104, 8.4301



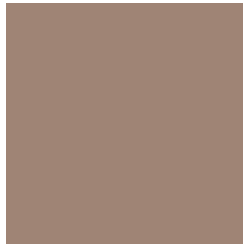
8.7517, 9.5949, 27.2980



0.1951, 0.2488, 0.5010

Previews

White Background



This preview shows how the XYZ color 25.7602, 25.1578, 20.3279 looks on a white background.

Color Contrast Check

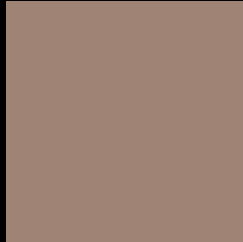
Large Text (above 18pt) WCAG AA ✓ Pass

Any Text WCAG AA × Fail

Large Text (above 18pt) WCAG AAA × Fail

Any Text WCAG AAA × Fail

Black Background



This preview shows how the XYZ color 25.7602, 25.1578, 20.3279 looks on a black background.

Color Contrast Check

Large Text (above 18pt) WCAG AA ✓ Pass

Any Text WCAG AA ✓ Pass

Large Text (above 18pt) WCAG AAA ✓ Pass

Any Text WCAG AAA × Fail

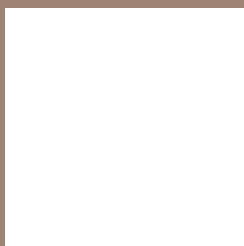
If you want to check with other color combinations, try the [Color Contrast Checker](#).

XYZ 25.7602, 25.1578, 20.3279

Background



This preview shows how black text looks on a background with the XYZ color 25.7602, 25.1578, 20.3279.



This preview shows how white text looks on a background with the XYZ color 25.7602, 25.1578,

Color Blindness Simulation

Color vision deficiency is a very complex topic, and I could not describe the different causes any better than Wikipedia does, so if you want to learn more, you should check out their [article about color blindness](#).

Dichromacy



Original Color

25.7602, 25.1578, 20.3279

Protanopia

23.8374, 25.1767, 21.3725

Deuteranopia

25.5627, 25.0560, 20.3186



Tritanopia

27.4107, 25.2460, 27.8544

Trichromacy



Original Color

25.7602, 25.1578, 20.3279

Protanomaly

24.3882, 25.0494, 21.0024

Deuteranomaly

25.5627, 25.0560, 20.3186

Tritanomaly

26.7773, 25.1810, 24.9218

Monochromacy



Original Color

25.7602, 25.1578, 20.3279

Achromatopsia

24.1572, 25.4152, 27.6772

Achromatomaly

24.6875, 25.3310, 24.7073

CSS Examples

Text

The CSS property to change the color of the text to XYZ 25.7602, 25.1578, 20.3279 is called "color". The color property can be set on classes, ids or directly on the HTML element.

This example shows how text in the color `rgb(159, 132, 117)` looks like.

```
.text, #text, p{  
    color:rgb(159, 132, 117)  
}
```

If you want to add a text shadow in that color use the text-shadow property, you can generate a text shadow directly with our [CSS Text Shadow Generator](#).

Here you see how black text with a 4 pixel rgb(159, 132, 117) colored shadow looks like.

```
.shadow{ text-shadow: 4px 4px 2px rgb(159, 132, 117) }
```

Border

The CSS property to change the border of an element to XYZ 25.7602, 25.1578, 20.3279 is called "border". The border property can be set on classes, ids or directly on the HTML element.

This example shows the color as border, it can be applied via the CSS property "border" or "border-color".

```
.border, #border, table{ border:4px solid rgb(159, 132, 117) }
```


If only the border color should be changed use the property `border-color`.

```
.border{ border-color:rgb(159, 132, 117) }
```

If you want to add a box shadow in that color use:

Here you see how a box with a 4 pixel `rgb(159, 132, 117)` colored shadow looks like.

```
.boxshadow{ -moz-box-shadow:4px 4px 4px  
4px rgb(159, 132, 117); -webkit-box-  
shadow:4px 4px 4px 4px rgb(159, 132, 117);  
box-shadow:4px 4px 4px 4px rgb(159, 132,  
117) }
```

Background

The CSS property to change the background color of an element to XYZ 25.7602, 25.1578, 20.3279 is called "background". The background property can be set on classes, ids or directly on the HTML element.

```
.background, #background, body{  
background: rgb(159, 132, 117) }
```

If only the background color should be changed can be used:

```
.background{ background-color: rgb(159,  
132, 117) }
```

This example shows the color as background, it is applied via the CSS property "background".

To optimize and compress your CSS code, you can use our [online CSS compressor and optimizer](#) based on csstidy. If you want to create a linear or radial gradient as background or border, check our [CSS Gradient Generator](#).

Hey! You found this booklet interesting? Support Converting Colors with the new Membership Option!

The pro membership hides all ads, plus gives you double the colors in the color bucket, and more awesome pro features!

[Learn more, Memberships starting at \\$2.50/m!](#)

**Follow me
on Twitter!**

@ConvertingColor